

Something even
better is what's next.

AUGUST 2024 | SOTHEBYSREALTY.COM



Laguna Beach, California

REPRESENTED BY BOB CHAPMAN ON PG 26

Sotheby's
INTERNATIONAL REALTY



61623 Hosmer Lake Drive Bend, OR 97702



Brian Ladd
License# 200908074
541.633.4569
admin@bendpropertysource.com



61623 Hosmer Lake Drive

4 BR | 4.5 BA | 5,234 SQ. FT.
\$3,995,000

Tucked behind the private gates of one of Bend Oregon's most exclusive custom neighborhoods, this home stands as a masterpiece in contemporary design. Built for entertaining and gathering, this single level gem delivers effortless luxury with a picturesque setting and panoramic Cascade mountain views.

BENDPROPERTYSOURCE.COM



Cascade Hasson | Sotheby's
INTERNATIONAL REALTY

OLD MILL OFFICE | 650 SW BOND STREET, SUITE 100, BEND, OR 97702 | CASCADEHASSON.COM

© 2024 Sotheby's International Realty. All Rights Reserved. Sotheby's International Realty® is a registered trademark and used with permission. Each Sotheby's International Realty office is independently owned and operated, except those operated by Sotheby's International Realty, Inc. The Sotheby's International Realty network fully supports the principles of the Fair Housing Act and the Equal Opportunity Act.



Table of Contents

4	CALIFORNIA
27	OREGON
30	IDAHO
32	MONTANA
33	WYOMING
34	COLORADO
35	FLORIDA
36	SOUTH CAROLINA
37	NORTH CAROLINA
38	MASSACHUSETTS
39	NEW YORK
40	CANADA
41	PUERTO RICO
42	THE BAHAMAS

BRENTWOOD, CALIFORNIA



2447 Arbutus Drive

6 BR | 11 BA | \$15,999,000

2447arbutus.com

BEVERLYWOOD, CALIFORNIA



9437 Oakmore Road

3 BR | 4 BA | \$7,295,000

9437oakmore.com

WESTWOOD, CALIFORNIA



10727 Wilshire Blvd. #1704

2 BR | 2.5 BA | \$3,995,000

remington1704.com

STUDIO CITY, CALIFORNIA



11508 Dona Cecilia Drive

4 BR | 3.5 BA | \$2,848,000

11508donacecilia.com

SANTA MONICA, CALIFORNIA



1040 4th Street #403

2 BR | 3 BA | SOLD FOR \$2,750,000

thedorchesterhouse403.com

BRENTWOOD, CALIFORNIA



12218 Montana Avenue #202

2 BR | 2.5 BA | \$1,695,000

brentwoodpark202.com

BEVERLY HILLS, CALIFORNIA



121 North Almont Drive #301

2 BR | 2.5 BA | \$1,450,000

almontplaza301.com

WESTWOOD, CALIFORNIA



1544 Camden Avenue PH2

2 BR | 2.5 BA | \$1,348,000

casahelenaph2.com

BEVERLY HILLS, CALIFORNIA



315 North Swall Drive #202

2 BR | 3 BA | SOLD FOR \$1,295,000

theswall202.com



JOHN GIDDINS

310.666.6365

john.giddins@sothebys.realty

johngiddins.com

SOTHEBY'S INTERNATIONAL REALTY - BEVERLY HILLS BROKERAGE | 9665 WILSHIRE BLVD STE 400 BEVERLY HILLS, CALIFORNIA 90212 | SOTHEBYSREALTY.COM

© 2024 Sotheby's International Realty. All Rights Reserved. Sotheby's International Realty® is a registered trademark and used with permission. Each Sotheby's International Realty office is independently owned and operated, except those operated by Sotheby's International Realty, Inc. The Sotheby's International Realty network fully supports the principles of the Fair Housing Act and the Equal Opportunity Act. John Giddins DRE# 01242450

CAMBRIA, CALIFORNIA



7292 Exotic Garden Drive

12 BR | 12 BA | \$28,000,000

themoonstoneranch.com

SANTA BARBARA, CALIFORNIA



663 Lilac Drive

5 BR | 9 BA | \$12,500,000

lilac-manor.com

BEVERLY HILLS, CALIFORNIA



1350 Benedict Canyon Drive

6 BR | 9.5 BA | \$10,800,000

sothebysrealty.com/id/q6b94r

MALIBU, CALIFORNIA



6353 Busch Drive

5 BR | 7 BA | \$5,950,000

6353busch.com

BEL AIR, CALIFORNIA



10812 Portofino Place

5 BR | 4.5 BA | \$4,800,000

sothebysrealty.com/id/4H3XVT

BEVERLY GROVE, CALIFORNIA



8126 West 4th Street

5 BR | 5.5 BA | \$4,795,000

sothebysrealty.com



NEYSHIA GO

Senior Global Real Estate Advisor

310.882.8357

neyshia@neyshiago.com

SOTHEBY'S INTERNATIONAL REALTY - BEVERLY HILLS BROKERAGE | 9665 WILSHIRE BLVD STE 400 BEVERLY HILLS, CALIFORNIA 90212 | SOTHEBYSREALTY.COM

© 2024 Sotheby's International Realty. All Rights Reserved. Sotheby's International Realty® is a registered trademark and used with permission. Each Sotheby's International Realty office is independently owned and operated, except those operated by Sotheby's International Realty, Inc. The Sotheby's International Realty network fully supports the principles of the Fair Housing Act and the Equal Opportunity Act. Neyshia Go DRE# 01933923

BEVERLY HILLS



9470 Hidden Valley Place

4 BR | 4 BA | \$3,995,000

sothebysrealty.com

CENTURY WOODS, CENTURY CITY



2177 Century Woods Way

3 BR + DEN | 4.5 BA | \$3,950,000

sothebysrealty.com/id/HBD5NM

CENTURY HILL, CENTURY CITY



2302 Century Hill

3 BD | 3.5 BA | \$3,495,000

sothebysrealty.com/id/RJCF23

LE PARC, CENTURY CITY

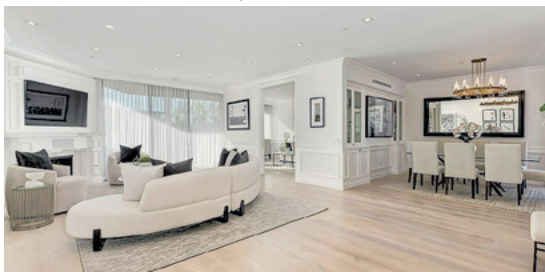


10128 Empyrean Way #102

2 BR + DEN | 3.5 BA | \$3,350,000

sothebysrealty.com/id/XBT5WW

IV SEASONS NORTH, BEVERLY HILLS



300 North Swall Drive PH451

2 BR + DEN | 2.5 BA | \$3,295,000

sothebysrealty.com/id/9JTBTY

IV SEASONS NORTH, BEVERLY HILLS



300 North Swall Drive #101

2 BR + DEN | 2.5 BA | \$2,450,000

sothebysrealty.com/id/B64KKR

MARINA DEL REY, CA



13082 Mindanao Way #11

3 BR | 3.5 BA | \$1,825,000

sothebysrealty.com/id/MRPX3W

CENTURY HILL, CENTURY CITY

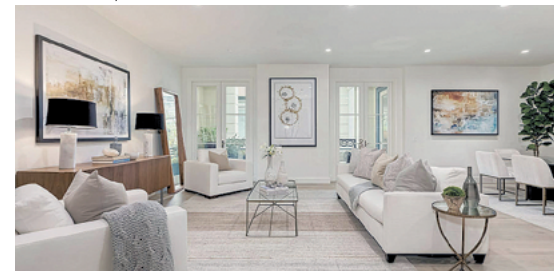


2455 Century Hill

2 BR | 2.5 BA | \$1,795,000

sothebysrealty.com/id/4EY2Z8

LE PARC, CENTURY CITY



10106 Empyrean Way #201

2 BR | 2.5 BA | \$2,695,000

sothebysrealty.com/id/ZW3PXF



LORI BERRIS

Senior Global Real Estate Advisor

310.880.3061

lori.berris@sothebysrealty.com

loriberris.com

SOTHEBY'S INTERNATIONAL REALTY - BEVERLY HILLS BROKERAGE | 9665 WILSHIRE BLVD STE 400 BEVERLY HILLS, CALIFORNIA 90212 | SOTHEBYSREALTY.COM

© 2024 Sotheby's International Realty. All Rights Reserved. Sotheby's International Realty® is a registered trademark and used with permission. Each Sotheby's International Realty office is independently owned and operated, except those operated by Sotheby's International Realty, Inc. The Sotheby's International Realty network fully supports the principles of the Fair Housing Act and the Equal Opportunity Act. Lori Berris DRE# 00962605



650 Endrino Place



Renée Avedon
310.801.5400
renee.avedon@sothebys.realty

650 Endrino Place, Beverly Hills, CA, 90210

5 BR | 8 BA | 7,209 SQ. FT.

\$15,000,000 | SHOWING BY APPOINTMENT ONLY

Tucked away at the end of a cul-de-sac in Beverly Hills's Trousdale Estates sits a private gated warm architectural 5bd.+ 8ba.home built by Aleck Dugally. The large-scale sunken living room and den have floor-to-ceiling pocket doors leading to the spectacular pool and spa area with stunning city and ocean views.

[SOTHEBYSREALTY.COM/ID/769E8F](https://www.sotbysrealty.com/id/769E8F)

Sotheby's
INTERNATIONAL REALTY

SOTHEBY'S INTERNATIONAL REALTY - BEVERLY HILLS BROKERAGE | 9665 WILSHIRE BLVD STE 400 BEVERLY HILLS, CALIFORNIA 90212 | [SOTHEBYSREALTY.COM](https://www.sotbysrealty.com)

© 2024 Sotheby's International Realty. All Rights Reserved. Sotheby's International Realty® is a registered trademark and used with permission. Each Sotheby's International Realty office is independently owned and operated, except those operated by Sotheby's International Realty, Inc. The Sotheby's International Realty network fully supports the principles of the Fair Housing Act and the Equal Opportunity Act. Renee Avedon DRE# 01410243



Front Row Ocean View Beach Condo



Enzo Ricciardelli
310.853.3837
enzo.ricciardelli@sothebys.realty
enzorealty.com

2920 Neilson Way #403

2 BR | 2 BA | 1,264 SQ. FT.
\$1,749,000

First time on the market, original owner! Exquisite Coastal Living: This top-floor, single level, west-facing 2 bedroom residence at the prestigious Sea Colony II has amazing potential with straight on ocean views from the living room and primary bedroom. Guard-gated and nestled along the sandy beaches of world renown Santa Monica, this home boasts unobstructed white-water ocean views.

SMBYTHEBEACH.COM

Sotheby's
INTERNATIONAL REALTY

SOTHEBY'S INTERNATIONAL REALTY - BEVERLY HILLS BROKERAGE | 9665 WILSHIRE BLVD STE 400 BEVERLY HILLS, CALIFORNIA 90212 | SOTHEBYSREALTY.COM

© 2024 Sotheby's International Realty. All Rights Reserved. Sotheby's International Realty® is a registered trademark and used with permission. Each Sotheby's International Realty office is independently owned and operated, except those operated by Sotheby's International Realty, Inc. The Sotheby's International Realty network fully supports the principles of the Fair Housing Act and the Equal Opportunity Act. Enzo Ricciardelli DRE# 01097604



Global Real Estate Advisor

Whether looking to buy, sell, or invest in real estate in Los Angeles, Tanya has the expertise to provide first-class service to achieve her client's real estate goals. Tanya's partnerships with her associates around the world afford her clients the benefit of an international team of experts to help with all global real estate endeavors.

TANYA STAWSKI
Global Real Estate Advisor
310.801.6033
tanya.stawski@sothebys.realty

BEVERLY HILLS, CALIFORNIA



1975 Loma Vista Drive
5 BR | 5 BA | \$11,750,000
1975LomaVista.com

ENCINO, CALIFORNIA



16511 Alyse Court
6 BR | 5.5 BA | \$2,999,000
16511Alyse.com

FOUR SEASONS PRIVATE RESIDENCE



9000 West 3rd Street #204
2 BR | 2 BA | \$22,000/MONTH
sothebysrealty.com/id/RSWJB5

SOTHEBY'S INTERNATIONAL REALTY - BEVERLY HILLS BROKERAGE | 9665 WILSHIRE BLVD STE 400 BEVERLY HILLS, CALIFORNIA 90212 | SOTHEBYSREALTY.COM

© 2024 Sotheby's International Realty. All Rights Reserved. Sotheby's International Realty® is a registered trademark and used with permission. Each Sotheby's International Realty office is independently owned and operated, except those operated by Sotheby's International Realty, Inc. The Sotheby's International Realty network fully supports the principles of the Fair Housing Act and the Equal Opportunity Act. Tanya Stawski DRE# 01918308

25004 Malibu Rd



Marcus Beck
License# 00971376
310.456.9405
Marcus.Beck
@sothebysrealty.com



Tracy Lynn Testin
License# 01212506
310.940.5578
TracyTestin1
@gmail.com

25004 Malibu Road

4 BR | 4.5 BA | 0 SQ. FT.
PRICE UPON REQUEST

A Testament to Architectural Significance and Rejuvenation. This Malibu Road beach home has a rich history of architectural significance and a story of preservation and rejuvenation. Designed by Jerrold E. Lomax, FAIA, in the 1970s, it stands as a testament to modern-minimalist ideals. It is characterized by clean lines and an open layout that maximizes natural light and scenic views of Malibu's coastline.



25004MALIBUROAD.COM

Sotheby's
INTERNATIONAL REALTY

SOTHEBY'S INTERNATIONAL REALTY - MALIBU BROKERAGE | 23732 MALIBU ROAD MALIBU, CALIFORNIA 90265 | SOTHEBYSREALTY.COM

© 2024 Sotheby's International Realty. All Rights Reserved. Sotheby's International Realty® is a registered trademark and used with permission. Each Sotheby's International Realty office is independently owned and operated, except those operated by Sotheby's International Realty, Inc. The Sotheby's International Realty network fully supports the principles of the Fair Housing Act and the Equal Opportunity Act.

MALIBU, CALIFORNIA



25004 Malibu Road

4 BR | 4.5 BA | \$35,000,000

sothebysrealty.com/id/VDL849

MALIBU, CALIFORNIA



950 Latigo Canyon Road

3 BR | 3.5 BA | \$3,495,000

sothebysrealty.com/id/LD5L7W

MALIBU, CALIFORNIA



20963 Las Flores Mesa Drive

LAND | 45,186 +/- SQ FT | \$1,495,000

sothebysrealty.com/id/DKMJM9

MARINA DEL REY, CALIFORNIA



4080 Glencoe Avenue 217

2 BR | 2.0 BA | \$1,199,000

sothebysrealty.com/id/LB XKCF

MALIBU, CALIFORNIA



23648 Malibu Colony Road

4 BR | 5.5 BA | \$115,000 MO

sothebysrealty.com/id/72Y95S

MALIBU, CALIFORNIA



25212 Malibu Road

5 BR | 4.5 BA | \$55,000 MO

sothebysrealty.com/id/5QQ7WS



MARCUS BECK

Sales Associate

310.456.9405

marcus.beck@sothebysrealty.com

SOTHEBY'S INTERNATIONAL REALTY - MALIBU BROKERAGE | 23732 MALIBU ROAD MALIBU, CALIFORNIA 90265 | SOTHEBYSREALTY.COM

© 2024 Sotheby's International Realty. All Rights Reserved. Sotheby's International Realty® is a registered trademark and used with permission. Each Sotheby's International Realty office is independently owned and operated, except those operated by Sotheby's International Realty, Inc. The Sotheby's International Realty network fully supports the principles of the Fair Housing Act and the Equal Opportunity Act.



Shen Schulz. Named #1 agent in
2023 at Sotheby's International
Realty Malibu Brokerage.

And among the Top 100 agents for all company owned
Sotheby's International Realty Brokerages.

SHEN SCHULZ
Broker Associate
310.980.8809
shen@shenrealty.com



MALIBU, CALIFORNIA



31721 Sea Level Drive

4 BR | 6.0 BA | \$16,900,000

sothebysrealty.com/id/BYDZ28

MALIBU, CALIFORNIA



4756 Latigo Canyon Road

5 BR | 5.5 BA | \$7,500,000

sothebysrealty.com/id/NJYVDD

SOTHEBY'S INTERNATIONAL REALTY - MALIBU BROKERAGE | 23732 MALIBU ROAD MALIBU, CALIFORNIA 90265 | SOTHEBYSREALTY.COM

© 2024 Sotheby's International Realty. All Rights Reserved. Sotheby's International Realty® is a registered trademark and used with permission. Each Sotheby's International Realty office is independently owned and operated, except those operated by Sotheby's International Realty, Inc. The Sotheby's International Realty network fully supports the principles of the Fair Housing Act and the Equal Opportunity Act. Named #1 agent at Sotheby's International Realty Malibu brokerage and Top 100 Agent per Sotheby's International Realty, Inc. 2023 internal data. S.Schulz DRE # 01327630

MALIBU, CALIFORNIA



4800 Latigo Canyon Road

7 BR | 10.5 BA | \$7,450,000

sothebysrealty.com/id/X5KBRB

MALIBU, CALIFORNIA



3240 Sumac Ridge Road

4 BR | 4.0 BA | \$7,395,000

sothebysrealty.com/id/6C7D48

PACIFIC PALISADES, CALIFORNIA



16830 Livorno Drive

5 BR | 5.5 BA | \$4,950,000

sothebysrealty.com/id/9G7EKJ

MALIBU, CALIFORNIA



24602 Vantage Point Terrace

5 BR | 4 BA | \$4,750,000

sothebysrealty.com/id/3NZVGW

MALIBU, CALIFORNIA



32700 Vista De Las Ondas

3 BR | 3 BA | \$4,495,000

shenrealty.com

MALIBU, CALIFORNIA

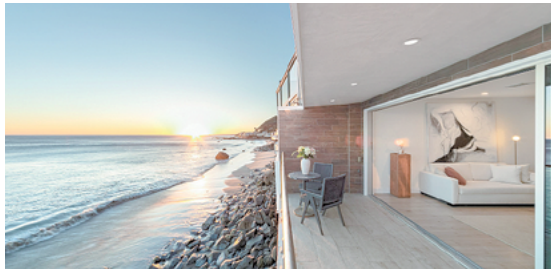


20436 Pacific Coast Highway

2 BR | 2.5 BA | \$3,150,000

sothebysrealty.com/id/S2SWQN

MALIBU, CALIFORNIA



20448 Pacific Coast Highway

3 BR | 3.0 BA | \$3,850,000

sothebysrealty.com/id/GTTQ78

MALIBU, CALIFORNIA



30051 Andromeda Lane

BR | 0.0 BA | \$3,200,000

sothebysrealty.com/id/KLHDL2

MALIBU, CALIFORNIA



6216 Tapia Drive, B

3 BR | 2.5 BA | \$1,425,000

sothebysrealty.com/id/ESDKS2



SHEN SCHULZ

Broker Associate

310.980.8809

shen@shenrealty.com

SOTHEBY'S INTERNATIONAL REALTY - MALIBU BROKERAGE | 23732 MALIBU ROAD MALIBU, CALIFORNIA 90265 | SOTHEBYSREALTY.COM

© 2024 Sotheby's International Realty. All Rights Reserved. Sotheby's International Realty® is a registered trademark and used with permission. Each Sotheby's International Realty office is independently owned and operated, except those operated by Sotheby's International Realty, Inc. The Sotheby's International Realty network fully supports the principles of the Fair Housing Act and the Equal Opportunity Act. S.Schulz DRE # 01327630

SANTA BARBARA, CALIFORNIA



Mission Canyon Craftsman

4 BR | 3 BA | 3,202+/- SQ. FT. | OFFERED AT \$3,995,000 841MissionCanyonRd.com

Craftsman on just under an acre with Island Views and new 500+/- SQ FT Accessory Building

SUMMERLAND, CALIFORNIA



Coastal Living in Summerland

3 BR | 2 BA | 1,546+/- SQ. FT. | OFFERED AT \$2,185,000

2380BannerAve.com

SANTA BARBARA, CALIFORNIA



La Cuesta Roqueña

5 BR | 4.5 BA | 4,495+/- SQ. FT. | 4+/- ACRES | \$25,000 PER MONTH

460ElCielito.com



CRYSTA METZGER
805.453.8700
Crysta@CrystaMetzger.com
PropertyInSantaBarbara.com
DRE: 01340521

SOTHEBY'S INTERNATIONAL REALTY - 1290 COAST VILLAGE ROAD | MONTECITO, CA 93108 | SOTHEBYSREALTY.COM

© 2024 Sotheby's International Realty. All Rights Reserved. Sotheby's International Realty® is a registered trademark and used with permission. Each Sotheby's International Realty office is independently owned and operated, except those operated by Sotheby's International Realty, Inc. The Sotheby's International Realty network fully supports the principles of the Fair Housing Act and the Equal Opportunity Act.

MONTECITO, CALIFORNIA



Sanctuary Of Luxury and Elegance

3 BR | 4.5 BA | OFFICE | GYM | OFFERED AT \$19,500,000 770SanYsidroLn.com

Newly completed single level estate on 1.7+/- acres in Montecito's exclusive Golden Quadrangle district.

MONTECITO, CALIFORNIA



Elegant Gated Single Level Villa in Montecito

3 BR | 2.5 BA | 2,493+/- SQ. FT. | .42+/- ACRES | OFFERED AT \$6,749,000 486CotaLn.com

On a quaint lane, this single-level villa offers an open-concept living experience with seamless indoor-outdoor flow to the pool and lush grounds.



CRYSTA METZGER

805.453.8700

Crysta@CrystaMetzger.com

PropertyInSantaBarbara.com

DRE: 01340521

SOTHEBY'S INTERNATIONAL REALTY - 1290 COAST VILLAGE ROAD | MONTECITO, CA 93108 | SOTHEBYSREALTY.COM

© 2024 Sotheby's International Realty. All Rights Reserved. Sotheby's International Realty® is a registered trademark and used with permission. Each Sotheby's International Realty office is independently owned and operated, except those operated by Sotheby's International Realty, Inc. The Sotheby's International Realty network fully supports the principles of the Fair Housing Act and the Equal Opportunity Act.

SANTA BARBARA, CALIFORNIA



Riviera Jetliner Views

4 BR | 3.5 BA | 3,492+/- SQ. FT. | OFFERED AT \$5,300,000 1568Franceschi.com

Sophistication and serenity meet at this stunning remodeled four-bedroom, three-and-a-half-bath residence in the Upper Riviera.

MONTECITO, CALIFORNIA



Magic in Montecito

2 BR | 1 BA | 1,008+/- SQ. FT. | OFFERED AT \$2,295,000 651RomeroCanyonRd.com

Welcome to Greentree Cottage, an enchanting single-level home. Nestled in a highly desirable location, this home offers both character and charm in abundance.



MAUREEN MCDERMUT

#1 Sotheby's International Realty Agent

Montecito & Santa Barbara 2021, 2022, & 2023

805.570.5545 | DRE: 01175027

Maureen.McDermut@sothebys.realty | MaureenMcDermut.com

SOTHEBY'S INTERNATIONAL REALTY - 1165 COAST VILLAGE ROAD, SUITE A | MONTECITO, CA 93108 | SOTHEBYSREALTY.COM

© 2024 Sotheby's International Realty. All Rights Reserved. Sotheby's International Realty® is a registered trademark and used with permission. Each Sotheby's International Realty office is independently owned and operated, except those operated by Sotheby's International Realty, Inc. The Sotheby's International Realty network fully supports the principles of the Fair Housing Act and the Equal Opportunity Act.

SANTA YNEZ, CALIFORNIA



An Unequaled Horse Farm

3 BR | 3BA | 9.97+/- ACRES | OFFERED AT \$5,295,000 2029Edison.com

Located in the heart of the Santa Ynez Valley set on 10+/- acre property is adjacent to fine equestrian estates and world-class polo fields.

SANTA YNEZ, CALIFORNIA



Santa Ynez Valley Vineyard Lifestyle

4 BR | 3 BA | 9.5+/- ACRES | OFFERED AT \$4,549,000 4230Casey.com

With panoramic Coastal Mountain Views and set on 10 +/- acres with a highly acclaimed vineyard is this contemporary ranch dwell-style home.



BRADY GROUP
805.331.3053
BraydGroupSYV@gmail.com
BradyGroupSYV.com

SOTHEBY'S INTERNATIONAL REALTY - 2900 NOJOQUI AVENUE | LOS OLIVOS, CA 93441 | SOTHEBYSREALTY.COM

© 2024 Sotheby's International Realty. All Rights Reserved. Sotheby's International Realty® is a registered trademark and used with permission. Each Sotheby's International Realty office is independently owned and operated, except those operated by Sotheby's International Realty, Inc. The Sotheby's International Realty network fully supports the principles of the Fair Housing Act and the Equal Opportunity Act.



Congratulations Graham J. Larson

Top 100 Sales Associates Company-Owned Brokerage, Q2 2024
#1 Individual Agent, Pacific Palisades Brokerage, Q2 2024

GRAHAM J. LARSON

Global Real Estate Advisor | DRE 01905737
310.303.9397
graham.larson@sothebysrealty.com

ACTIVE | BRENTWOOD



1784 Old Ranch Road
4 BR | 3 BA | \$8,950,000

COMING SOON | VENICE



741 Brooks Avenue
2 HOMES | 5 BR+5.5 BA | PRICE UPON REQUEST

ACTIVE | BRENTWOOD



1253 11th Street Unit 2
3 BR | 2.5 BA | \$2,450,000

SOTHEBY'S INTERNATIONAL REALTY - PACIFIC PALISADES BROKERAGE | 15140 SUNSET BOULEVARD PACIFIC PALISADES, CALIFORNIA 90272 | SOTHEBYSREALTY.COM

© 2024 Sotheby's International Realty. All Rights Reserved. Sotheby's International Realty® is a registered trademark and used with permission. Each Sotheby's International Realty office is independently owned and operated, except those operated by Sotheby's International Realty, Inc. The Sotheby's International Realty network fully supports the principles of the Fair Housing Act and the Equal Opportunity Act.

PACIFIC PALISADES, CALIFORNIA



1535 Umeo Road

6 BR | 9 BA | 8,640 SF | 25,142 SF LOT | OFFERED AT \$14,900,000

Designed by Philip Vertoch, this luxurious Palisades home offers heated floors, gourmet kitchen, a state-of-the-art theater, Lutron app-controlled features & a 1,000-bottle wine cellar.



1535UmeoEstate.com

GUESTHOUSE | ELEVATOR | INFINITY POOL & SPA | PICKLEBALL/BASKETBALL COURT | ROOF DECK WITH PANORAMIC VIEWS

Exceptional outdoor living spaces, landscaping by renowned designer Stephen Block, comprehensive security, ocean and mountain view balconies

CHRISTINA CAMEROTA

Sales Associate | DRE 02233774

310.890.1934

christina.camerota@sir.com

SOTHEBY'S INTERNATIONAL REALTY - PACIFIC PALISADES BROKERAGE | 15140 SUNSET BOULEVARD PACIFIC PALISADES, CALIFORNIA 90272 | SOTHEBYSREALTY.COM

© 2024 Sotheby's International Realty. All Rights Reserved. Sotheby's International Realty® is a registered trademark and used with permission. Each Sotheby's International Realty office is independently owned and operated, except those operated by Sotheby's International Realty, Inc. The Sotheby's International Realty network fully supports the principles of the Fair Housing Act and the Equal Opportunity Act.



Congratulations Alexandra Pfeifer

#1 Individual Agent – Pacific Palisades | 2023 Sold Volume
#1 Overall Producing Agent 2023 – Pacific Palisades
2023 Real Estate All Star featured in LA Magazine
2024 RealTrends Verified Agent

ALEXANDRA PFEIFER
Sales Associate | DRE 01743378
310.650.3540
alexandra@alexandrapfeifer.com

ACTIVE | WOODLAND HILLS



4317 Canoga Drive
4 BR | 3 BA | \$1,995,000

FOR LEASE | PACIFIC PALISADES



1023 Galloway Street
5 BR | 6 BA | \$25,000/MONTH

JUST SOLD | PACIFIC PALISADES



367 North Grenola Street
3 BR | 2 BA | \$2,795,000

SOTHEBY'S INTERNATIONAL REALTY - PACIFIC PALISADES BROKERAGE | 15140 SUNSET BOULEVARD PACIFIC PALISADES, CALIFORNIA 90272 | SOTHEBYSREALTY.COM

© 2024 Sotheby's International Realty. All Rights Reserved. Sotheby's International Realty® is a registered trademark and used with permission. Each Sotheby's International Realty office is independently owned and operated, except those operated by Sotheby's International Realty, Inc. The Sotheby's International Realty network fully supports the principles of the Fair Housing Act and the Equal Opportunity Act.



1901 Mount Olympus Drive

Jesse Dean
DRE #02052410
310.867.0094
Jesse.Dean@Sothebys.Realty

David He
DRE #02190826
310.623.0395
David.He@Sothebys.Realty



1901 Mount Olympus Drive | Los Angeles

3 BR | 3 BA | 2,494 SQ. FT. | 14,382 SQ. FT. LOT
PRICE UPON REQUEST

Updated Mount Olympus home on a large lot. High ceilings, a dual-sided fireplace, dine-in kitchen, backyard with BBQ and pool, and primary suite with walk-in closet. Close to the Sunset Strip, it offers serene canyon living with urban convenience.

Sotheby's
INTERNATIONAL REALTY

SOTHEBY'S INTERNATIONAL REALTY - LOS FELIZ BROKERAGE | 1801 NORTH HILLHURST AVENUE LOS ANGELES, CALIFORNIA 90027 | SOTHEBYSREALTY.COM

© 2024 Sotheby's International Realty. All Rights Reserved. Sotheby's International Realty® is a registered trademark and used with permission. Each Sotheby's International Realty office is independently owned and operated, except those operated by Sotheby's International Realty, Inc. The Sotheby's International Realty network fully supports the principles of the Fair Housing Act and the Equal Opportunity Act.



Incredible Views in La Canada Flintridge



Augusta Anne
Sanborn
DRE #01226787
626.252.5711
Anne.Sanborn
@sothebys.realty



1218 Flintridge Circle | La Canada Flintridge, CA

3 BR | 4 BA | 2,931± SQ. FT. | 56,866± SQ. FT. (LOT)
1218FLINTRIDGE.COM

Offered at \$3,450,000

Striking Mid-Century with signature modernist flair, featuring stunning panoramic views seen through floor to ceiling windows. Set on a large lot filled with nature in a prime Flintridge location.

SOTHEBYSREALTY.COM



Sotheby's
INTERNATIONAL REALTY

SOTHEBY'S INTERNATIONAL REALTY - PASADENA BROKERAGE | 800 E COLORADO BLVD STE 150 PASADENA, CALIFORNIA 91101 | SOTHEBYSREALTY.COM

© 2024 Sotheby's International Realty. All Rights Reserved. Sotheby's International Realty® is a registered trademark and used with permission. Each Sotheby's International Realty office is independently owned and operated, except those operated by Sotheby's International Realty, Inc. The Sotheby's International Realty network fully supports the principles of the Fair Housing Act and the Equal Opportunity Act.



Exquisite and Inspiring Contemporary Home



Laura Berman
DRE #00934015
530.913.8789
laura.berman
@sothebysrealty.com



15160 Applewood Lane, Nevada City, CA 95959

4 BR | 5 BA | 6,285 SQ. FT. | 40 ACRES
\$4,650,000

Architecturally designed to bring in the natural light and views with a great room boasting 20' ceilings. Main Bedroom with His & Her bathrooms overlooking the pool, spa and one of the 3 year round ponds. Red Oak Floors, Russian Alder Cabinets plus 1000 SF Shop/Garage. Waterfalls, Fruit Trees, Vegetable Garden and 2 miles of Hiking/ATV/Riding Trails and Fire Suppression System.



SOTHEBYSREALTY.COM/ID/G74R8H

Nick Sadek | Sotheby's
INTERNATIONAL REALTY

NICK SADEK SOTHEBY'S INTERNATIONAL REALTY | 9217 SIERRA COLLEGE BLVD SUITE 120 ROSEVILLE, CALIFORNIA 95661 | SOTHEBYSREALTY.COM

© 2024 Sotheby's International Realty. All Rights Reserved. Sotheby's International Realty® is a registered trademark and used with permission. Each Sotheby's International Realty office is independently owned and operated, except those operated by Sotheby's International Realty, Inc. The Sotheby's International Realty network fully supports the principles of the Fair Housing Act and the Equal Opportunity Act.

ENCINITAS, CALIFORNIA



1630 Neptune Avenue

4 BR | 5.0 BA | \$8,500,000

sothebysrealty.com/id/8ZZ7KK

SAN DIEGO, CALIFORNIA



1004 Devonshire Drive

5 BR | 3.5 BA | \$6,295,000

sothebysrealty.com/id/7REQS8

ENCINITAS, CALIFORNIA



651 Quail Gardens Ln

4 BR | 3.5 BA | \$5,550,000

sothebysrealty.com/id/YSR7H5

SAN DIEGO, CALIFORNIA



2408 First Avenue

4 BR | 2.5 BA | \$4,885,000

sothebysrealty.com/id/7HDSZ5



ERIC IANTORNO

Global Real Estate Advisor

DRE# 01256501

858.334.3577

eric@ericiantorno.com

PACIFIC SOTHEBY'S INTERNATIONAL REALTY | 687 SOUTH COAST HWY #102 ENCINITAS, CALIFORNIA 92024 | SOTHEBYSREALTY.COM

© 2024 Sotheby's International Realty. All Rights Reserved. Sotheby's International Realty® is a registered trademark and used with permission. Each Sotheby's International Realty office is independently owned and operated, except those operated by Sotheby's International Realty, Inc. The Sotheby's International Realty network fully supports the principles of the Fair Housing Act and the Equal Opportunity Act.

DEL MAR, CALIFORNIA



111 Sea Cliff Way
5 BR | 5.5 BA | \$17,950,000
sothebysrealty.com/id/VPKRE7

RANCHO SANTA FE, CALIFORNIA



15575 Las Planideras
5 BR | 7.0 BA | \$15,850,000
sothebysrealty.com/id/MFCGLJ

DEL MAR, CALIFORNIA



215 10th Street
5 BR | 3.5 BA | \$8,995,000
sothebysrealty.com/id/J66VWB

RANCHO SANTA FE, CALIFORNIA



6884 El Camino Del Norte
5 BR | 6.5 BA | \$8,895,000
sothebysrealty.com/id/5VZMCZ



ERIC IANTORNO
DRE# 01256501
Global Real Estate Advisor
858.334.3577
eric@ericiantorno.com

PACIFIC SOTHEBY'S INTERNATIONAL REALTY | 687 SOUTH COAST HWY #102 ENCINITAS, CALIFORNIA 92024 | SOTHEBYSREALTY.COM

© 2024 Sotheby's International Realty. All Rights Reserved. Sotheby's International Realty® is a registered trademark and used with permission. Each Sotheby's International Realty office is independently owned and operated, except those operated by Sotheby's International Realty, Inc. The Sotheby's International Realty network fully supports the principles of the Fair Housing Act and the Equal Opportunity Act.



616 Bolsana Drive Laguna Beach, CA 92651

Bob Chapman
License# 00714528
949.541.1223
bobchapman@coastlaguna.com



616 Bolsana Drive

3 BR | 2.5 BA | 3,950 SQ. FT.
\$5,100,000

Laguna Beach classic contemporary design with distinctive lines, angles, and shapes that characterize the unique architecture when you first enter the home. High on the hills above Victoria Beach the neighborhood of Portafina terraced into the hills between miles of Open Space and Victoria Highlands. Nestled into the natural setting further accents the imagination of the architectural design and private connection to the site.



[SOTBYSREALTY.COM/ID/7D7Y3W](https://www.sotbysrealty.com/id/7D7Y3W)

Pacific | Sotheby's
INTERNATIONAL REALTY

PACIFIC SOTHEBY'S INTERNATIONAL REALTY | 1200 NEWPORT CENTER DRIVE NEWPORT BEACH, CA 92660 | SOTHEBYSREALTY.COM

© 2024 Sotheby's International Realty. All Rights Reserved. Sotheby's International Realty® is a registered trademark and used with permission. Each Sotheby's International Realty office is independently owned and operated, except those operated by Sotheby's International Realty, Inc. The Sotheby's International Realty network fully supports the principles of the Fair Housing Act and the Equal Opportunity Act.



Portland's Impeccably Preserved Cobb Estate



Tina Jacobsen
Licensed Broker
503.680.8140
tina.jacobsen
@sothebysrealty.com



1314 SE 55th Avenue | Portland, OR 97215

8 BR | 4.2 BA | 8,815 SQ. FT. | 0.56 AC
\$2,995,000

Honored on the National Register of Historic Places, this immaculate estate epitomizes Arts & Crafts elegance. Nestled on a .56-acre corner lot, the Cobb House blends timeless charm with superior craftsmanship. Remarkable wood joinery is in pristine condition with exquisite wainscoting, three-tiered oak paneling, box beam ceilings, and architrave molding.



SOTHEBYSREALTY.COM/ID/4KGDDD

Cascade Hasson | Sotheby's
INTERNATIONAL REALTY

CASCADE HASSON SOTHEBY'S INTERNATIONAL REALTY | 1500 NE IRVING ST, SUITE 110 PORTLAND, OR 97232 | SOTHEBYSREALTY.COM

© 2024 Sotheby's International Realty. All Rights Reserved. Sotheby's International Realty® is a registered trademark and used with permission. Each Sotheby's International Realty office is independently owned and operated, except those operated by Sotheby's International Realty, Inc. The Sotheby's International Realty network fully supports the principles of the Fair Housing Act and the Equal Opportunity Act.



56087 School House Road Bend, OR 97707



Kelly Winch
Licensed Principal Broker
541.390.0398
Kelly.Winch
@sothebysrealty.com

56087 School House Road, Bend OR 97707

4 BR | 4.5 BA | 5,130 SQ. FT. | 1.90 AC
\$3,698,000

This unique custom log home is located in the sought-after community of historic Vandevent Ranch. Just 21 homesites spread across 350 acres of open space. Every property borders a hundred acres or more of ranch meadow, forest, lake, or river. Owners can walk or horseback ride on over eight miles of ranch trails. 2 miles to Sunriver. There is no better setting in Central Oregon!



SOTHEBYSREALTY.COM/ID/VQQ9WG

Cascade Hasson | Sotheby's
INTERNATIONAL REALTY

CASCADE HASSON SOTHEBY'S INTERNATIONAL REALTY | 57100 BEAVER DRIVE BUILDING #23, SUITE 140 SUNRIVER, OREGON 97707 | SOTHEBYSREALTY.COM

© 2024 Sotheby's International Realty. All Rights Reserved. Sotheby's International Realty® is a registered trademark and used with permission. Each Sotheby's International Realty office is independently owned and operated, except those operated by Sotheby's International Realty, Inc. The Sotheby's International Realty network fully supports the principles of the Fair Housing Act and the Equal Opportunity Act.



Luxury Living in Bend: Views, Horse Facilities & Modern Upgrades



Erica Callfas
Licensed Broker
541.848.1857
Erica.Callfas
@sothebysrealty.com



65345 Tweed Road | Bend, OR 97703

4 BR | 2.0 BA | 3,566 SQ. FT. | 37.52 AC
\$2,750,000

Experience pure, unobstructed Cascade Mountain views from this extremely private 37-acre property nestled in the vibrant community of Tumalo. This charming home offers breathtaking views from Broken top to Mt Jefferson and has been beautifully updated. This property is ideal for those seeking a blend of country and city living with easy access to all that Bend has to offer.

SOTHEBYSREALTY.COM/ID/LT4SN9



Cascade Hasson | Sotheby's
INTERNATIONAL REALTY

CASCADE HASSON SOTHEBY'S INTERNATIONAL REALTY | 650 SW BOND STREET SUITE 100 BEND, OREGON 97702 | SOTHEBYSREALTY.COM

© 2024 Sotheby's International Realty. All Rights Reserved. Sotheby's International Realty® is a registered trademark and used with permission. Each Sotheby's International Realty office is independently owned and operated, except those operated by Sotheby's International Realty, Inc. The Sotheby's International Realty network fully supports the principles of the Fair Housing Act and the Equal Opportunity Act.

Debra Hodges



Debra Hodges is renowned as one of Boise's top REALTORS®. She offers her clients unparalleled service, expertise, and network connections while leveraging her deep local knowledge to provide invaluable insights into Boise's unique real estate opportunities - the result is a bespoke, luxury experience in real estate.

#1 AGENT AT GROUP ONE SOTHEBY'S INTERNATIONAL REALTY
BOISE NEIGHBORHOOD EXPERT
OVER 30 YEARS OF EXPERIENCE



Debra Hodges
Global Real Estate Advisor
208.869.2323
Debra.Hodges
@sothebysrealty.com

DEBRAHODGES.COM

Group One | Sotheby's
INTERNATIONAL REALTY

GROUP ONE SOTHEBY'S INTERNATIONAL REALTY | 913 W. RIVER STREET SUITE 300 BOISE, IDAHO 83702 | SOTHEBYSREALTY.COM

© 2024 Sotheby's International Realty. All Rights Reserved. Sotheby's International Realty® is a registered trademark and used with permission. Each Sotheby's International Realty office is independently owned and operated, except those operated by Sotheby's International Realty, Inc. The Sotheby's International Realty network fully supports the principles of the Fair Housing Act and the Equal Opportunity Act.



Curious about Idaho?

The Treasure Valley encompasses more than just the City of Boise. With neighboring cities like Eagle, Star, Meridian, Kuna and beyond, there is something for everyone. Scan the QR code below to hear why so many Southern Californians are choosing the Idaho lifestyle. Relocating or purchasing a second home? Contact me for a client-focused real estate experience.

ERICA TOFFEL

Global Real Estate Advisor | Top Producer

208.713.3421

erica.toffel@sothebysrealty.com

 @ericatoffel  @ericatoffelrealestate



EAGLE, IDAHO



2749 S White Castle Ave

6 BR | 8.0 BA | LAST OFFERED AT \$3,295,000

SOLD

CALDWELL, IDAHO



15494 Eclipse Drive

4 BR | 2.5 BA | LAST OFFERED AT \$750,000

SOLD

GROUP ONE SOTHEBY'S INTERNATIONAL REALTY | 2025 E RIVERSIDE DR #260 EAGLE, IDAHO 83616 | [SOTHEBYSREALTY.COM](https://www.sothebysrealty.com)

© 2024 Sotheby's International Realty. All Rights Reserved. Sotheby's International Realty® is a registered trademark and used with permission. Each Sotheby's International Realty office is independently owned and operated, except those operated by Sotheby's International Realty, Inc. The Sotheby's International Realty network fully supports the principles of the Fair Housing Act and the Equal Opportunity Act.

GREAT FALLS, MONTANA



665 Wilson Butte Road

5 BR | 5.5 BA | 4,703 SQFT | \$4,250,000

sothebysrealty.com/id/6Y6ZZJ

CALLIE PECUNIES Broker
406.595.0755 | callie@bigskysir.com

MCALLISTER, MONTANA



405 Swayback Road

6 BR | 8.0 BA | 8,259 SQFT | \$7,995,000

sothebysrealty.com/id/TNPQHY

CHARLOTTE DURHAM Broker
406.581.8891 | c@charlottenco.com

BIG SKY, MONTANA



55 Wind Dancer Lane

6 BR | 9.0 BA | 10,506 SQFT | \$8,500,000

sothebysrealty.com/id/JB8GSW

LAURA SACCHI Broker
406.570.9651 | laura@bigskysir.com

BOZEMAN, MONTANA



246 Wintergreen Lane

5 BR | 5.0 BA | 6,764 SQFT | \$3,699,000

sothebysrealty.com/id/S3H72Z

CHARLOTTE DURHAM Broker
406.581.8891 | c@charlottenco.com

BOZEMAN, MONTANA



113 Bridger Meadow Trail, Unit B

2 BR | 2.5 BA | 1,556 SQFT | \$1,149,900

sothebysrealty.com/id/JYSND8

CHARLOTTE DURHAM Broker
406.581.8891 | c@charlottenco.com

BIG SKY, MONTANA



7 Yeti Ridge | Spanish Peaks Club

4 BR | 3.5 BA | 4,156 SQFT | \$6,900,000

sothebysrealty.com/id/3R27MH

WILL BRUNNER Broker
406.209.1225 | will@bigskysir.com

BIG SKY, MONTANA



1555 Silverado Trail

4 BR | 4.5 BA | 7,431 SQFT | \$6,495,000

sothebysrealty.com/id/6PYH65

CATHY GORMAN & TIM CYR Brokers
406.580.2318 | cathy@bigskysir.com

BIG SKY, MONTANA



461 Wildridge Fork

5 BR | 7.0 BA | 5,610 SQFT | \$11,850,000

sothebysrealty.com/id/HR7DLL

JUSTA ADAMS Sales Associate
406.600.1316 | justa@bigskysir.com

MONTANA CITY, MONTANA



100 Big Indian Gulch Road

4 BR | 3.5 BA | 7,700 SQFT | \$3,400,000

sothebysrealty.com/id/DFRBEY

NATHAN KNOPF Broker
406.600.5778 | nathan@bigskysir.com

BIG SKY SOTHEBY'S INTERNATIONAL REALTY | 424 E MAIN STREET, SUITE 1, BOZEMAN | 33 LONE PEAK DRIVE, UNIT #105, BIG SKY | [BIGSKYSIR.COM](https://bigskysir.com)

© 2024 Sotheby's International Realty. All Rights Reserved. Sotheby's International Realty® is a registered trademark and used with permission. Each Sotheby's International Realty office is independently owned and operated, except those operated by Sotheby's International Realty, Inc. The Sotheby's International Realty network fully supports the principles of the Fair Housing Act and the Equal Opportunity Act.



Grand Teton Views on 38 Acres



Charlie Ross
Associate Broker
307.413.7449
charlie.ross@jhsir.com



1155 N East Butte Road, Jackson, WY 83001

\$9,250,000

This 38-acre residential property enjoys a 2-acre building site with expansive views of the Grand Teton and the entire Teton range all the way to Yellowstone. Amongst the wildflowers, aspens, and conifers is a natural and untouched wildlife habitat and sanctuary just minutes away from the Town of Jackson, Jackson Hole Mountain Resort, and Grand Teton National Park.

[SOTHEBYSREALTY.COM/ID/5RH4HK](https://www.sothebysrealty.com/id/5RH4HK)





Mountain Luxury at Its Finest



Thomas Banner
License# EA.001311239
970.376.7800
Thomas.Banner@SIR.com



151 Lakeview Drive, Basalt, Colorado

3 BR | 1.5 BA | 2,643 SQ. FT.
\$3,950,000

Tucked away on the western slope of Colorado's Rocky Mountains in a world-class lakeside community, these resort-style homes are in the heart of Roaring Fork Valley and just 20 minutes from Aspen. Whether you're a tried and true local, a new visitor, or a professional, this stunning 43-acre mixed-use community is everything you've ever dreamed of.



LAKEHOUSE TREEFARM.COM

Aspen
Snowmass | Sotheby's
INTERNATIONAL REALTY

ASPEN SNOWMASS SOTHEBY'S INTERNATIONAL REALTY | 780 EAST VALLEY ROAD BASALT, COLORADO 81621 | ASPENSNOWMASSSIR.COM

© 2024 Sotheby's International Realty. All Rights Reserved. Sotheby's International Realty® is a registered trademark and used with permission. Each Sotheby's International Realty office is independently owned and operated, except those operated by Sotheby's International Realty, Inc. The Sotheby's International Realty network fully supports the principles of the Fair Housing Act and the Equal Opportunity Act.

Finesse4 Oceanfront Townhomes

Jonathan Bigelman
Global Real
Estate Advisor
2024 Top Producer
786.246.2068
JBigelman
@onesothebysrealty.com
jonathanbigelman.com



493 N Ocean Blvd. #3, Pompano Beach, FL
4 BEDROOMS | 4F+1H BATHROOMS | 3,624 SQUARE FEET
OFFERED AT \$4,219,000



Immerse yourself in seaside living steps away from Pompano Beach enjoying direct unobstructed ocean views from this stunning 3,624 SF 4-story townhouse. Currently in construction, this opulent residence features a seamless layout, a private elevator, and stunning finishes complete with a summer kitchen and pool —making it the ideal space for South Florida enjoyment! Delivered Fully Finished

ONE | Sotheby's
INTERNATIONAL REALTY

ONE SOTHEBY'S INTERNATIONAL REALTY | 9588 HARDING AVE , SURFSIDE, FLORIDA, 33154 | SOTHEBYSREALTY.COM

© 2024 Sotheby's International Realty. All Rights Reserved. Sotheby's International Realty® is a registered trademark and used with permission. Each Sotheby's International Realty office is independently owned and operated, except those operated by Sotheby's International Realty, Inc. The Sotheby's International Realty network fully supports the principles of the Fair Housing Act and the Equal Opportunity Act.



Remarkable Beauty, Extraordinary Views!



David Vandeputte
License# 86655
864.508.1717
david@jha-sir.com



132 Mountain Shore Trail, Six Mile, SC

6 BR | 7.5 BA | 9,656 SQ. FT.
\$12,000,682

It's nearly impossible to paint a picture of the breathtaking setting on Lake Keowee, the striking architecture and distinctive design of this extraordinary home in the prestigious community of the Cliffs at Keowee Springs. This nearly 10,000 square foot home merges old world charm with an array of modern finishes and features, and seamlessly fits on the tranquil 1.75-acre home site.



132MOUNTAINSHORETRAIL.COM

Joan Herlong
& Associates | Sotheby's
INTERNATIONAL REALTY

JOAN HERLONG & ASSOCIATES | 148 THOMAS GREEN BLVD. | CLEMSON, SOUTH CAROLINA 29631 | JHA-SOTHEBYSREALTY.COM

© 2024 Sotheby's International Realty. All Rights Reserved. Sotheby's International Realty® is a registered trademark and used with permission. Each Sotheby's International Realty office is independently owned and operated, except those operated by Sotheby's International Realty, Inc. The Sotheby's International Realty network fully supports the principles of the Fair Housing Act and the Equal Opportunity Act.

2203 N Lumina Avenue Wrightsville Beach, NC



Lynne Galloway

910.233.5401
Lynne.Galloway
@sothebysrealty.com



2203 N Lumina Avenue

4 BR | 4.5 BA | 5,658 SQ. FT.
\$16,900,000

This one-of-a-kind spectacularly appointed residence sits on one of the largest lots in Wrightsville and takes advantage of gorgeous sunsets over Lollipop Bay. Custom built by detailed craftsman Nick Garrett with interiors by McAlpine, Booth, and Ferrier, the home is a magnificent showplace that lives like a dream with a full gym, covered loggia, cold-plunge, pool, spa, and 65' floating dock.

[SOTHEBYSREALTY.COM/ID/PS42GE](https://www.sothebysrealty.com/id/PS42GE)



Landmark | Sotheby's
INTERNATIONAL REALTY

LANDMARK SOTHEBY'S INTERNATIONAL REALTY | 7205 WRIGHTSVILLE AVENUE SUITE K WILMINGTON, NORTH CAROLINA 28403 | [SOTHEBYSREALTY.COM](https://www.sothebysrealty.com)

© 2024 Sotheby's International Realty. All Rights Reserved. Sotheby's International Realty® is a registered trademark and used with permission. Each Sotheby's International Realty office is independently owned and operated, except those operated by Sotheby's International Realty, Inc. The Sotheby's International Realty network fully supports the principles of the Fair Housing Act and the Equal Opportunity Act.

Stately 19th-Century Limestone Mansion in Boston's Back Bay



William Montero
License# 9021188
617.312.7232
William.Montero
@sothebysrealty.com



130 Commonwealth Avenue, Boston, MA 02116

6 BR | 7F 3H BA | 10,022 SQ. FT.
\$25,990,000

Behind wrought-iron gates on Commonwealth Ave, this stately 19th-century limestone mansion is artfully transformed to emulate a boutique hotel. The home merges classic architectural details like cathedral ceilings, fireplaces, and ornate moldings with bold modern touches. A rooftop deck offers panoramic city views, and Juliet balconies overlook the iconic Commonwealth Mall.



[SOTHEBYSREALTY.COM/ID/SJE7MQ](https://sothebysrealty.com/id/SJE7MQ)

Gibson | Sotheby's
INTERNATIONAL REALTY

GIBSON SOTHEBY'S INTERNATIONAL REALTY | 277 DARTMOUTH STREET, 3RD FLOOR BOSTON, MASSACHUSETTS 02116 | [GIBSONSOTHEBYSREALTY.COM](https://gibsonsothebysrealty.com)

© 2024 Sotheby's International Realty. All Rights Reserved. Sotheby's International Realty® is a registered trademark and used with permission. Each Sotheby's International Realty office is independently owned and operated, except those operated by Sotheby's International Realty, Inc. The Sotheby's International Realty network fully supports the principles of the Fair Housing Act and the Equal Opportunity Act.

227-Acre Compound in the Heart of the Hudson Valley



Karen Climo
Real Estate Broker
+1 413.429.6732
karen.climo
@sothebysrealty.com

Jennifer Capala
Licensed Associate Real
Estate Broker
+1 917.685.6925
jen.capala
@sothebysrealty.com

1175 County Route 27A, Copake NY

6 BR | 7 BA | 8,384 SQ. FT.
\$12,995,000

Situated 2 hours from NYC, this 227-acre estate offers luxury and privacy in the Hudson Valley. The six-bedroom lodge has stunning Berkshire mountain views, gardens, farm fields, wetlands, and wooded hillsides. Enjoy Chrysler Pond frontage, a saltwater pool, tennis court, sauna, steam room, pool house, 9,000 sq ft barn, bocce court, shooting range, and more. It's hotel living at home.

[SOTHEBYSREALTY.COM/ID/8Q6S72](https://www.sothebysrealty.com/ID/8Q6S72)



CHATHAM BROKERAGE | 2 PARK ROW SUITE 1 CHATHAM, NY 12037 | [SOTHEBYSREALTY.COM](https://www.sothebysrealty.com)

© 2024 Sotheby's International Realty. All Rights Reserved. Sotheby's International Realty® is a registered trademark and used with permission. Each Sotheby's International Realty office is independently owned and operated, except those operated by Sotheby's International Realty, Inc. The Sotheby's International Realty network fully supports the principles of the Fair Housing Act and the Equal Opportunity Act.

Gables Estate



2106 SW Marine Drive

6 BEDS | 8 BATHS | 10,709 SQ. FT.

CA\$27,500,000

Nestled amidst the verdant splendour of Vancouver's majestic landscape, behold The Gables Estate, an opulent sanctuary spanning a vast 4.25-acre along the renowned SW Marine Drive.

Victor Cheung

+1.604.505.8838
Victor.Cheung
@sothebysrealty.com

THEGABLESESTATE.COM



Sotheby's | Canada
INTERNATIONAL REALTY

SOTHEBY'S INTERNATIONAL REALTY CANADA | 210-858 BEATTY STREET, VANCOUVER, BRITISH COLUMBIA V6B 1C1 +1.604.632.3300 | SOTHEBYSREALTY.COM

© 2024 Sotheby's International Realty. All Rights Reserved. Sotheby's International Realty® is a registered trademark and used with permission. Each Sotheby's International Realty office is independently owned and operated, except those operated by Sotheby's International Realty, Inc. The Sotheby's International Realty network fully supports the principles of the Fair Housing Act and the Equal Opportunity Act.

The Isles at Dorado Beach



Oriana Juvelier
787.523.6503
oriana.juvelier@sothebysrealty.pr



Joan Lopez
787.523.6510 Ext. 102
joan.lopez@sothebysrealty.pr

27 The Isles, Dorado Beach

5 BR | 6 BA | 2 HB | 5,800 TOTAL SQ. FT.
\$6,999,000

Sitting on a corner quarter-acre lot, 27 The Isles is a brand-new atelier design, thoughtfully integrated with elevated interior elements and hand-selected upgrades to the original build, that redefine contemporary spaces and embody the best within The Isles community. Spanning two stories, the open floor plan is flooded with vibrant natural light that hosts all of your living and entertainment spaces. The centerpiece of 27 The Isles is its formal living room, boasting 21-foot ceilings, terrace facing featuring a climate controlled inground pool and luscious backyard.



SOTHEBYSREALTY.COM/ID/7KWNMW





Tree House Harbour Island, The Bahamas



Colleen Carey
Estate Agent
+1 242.818.6038
Colleen.Carey
@SIRbahamas.com



Tree House
6 BR | 5.0 BA | 2,200 SQ. FT.
\$3,500,000

Welcome to Tree House on Hill Street, a serene retreat nestled amongst the trees in the heart of vibrant Harbour Island. Offering views of the bay from its elevated position, this property is a haven of tranquility where one can relish stunning sunsets from the comfort of the covered terrace, surrounded by the rustling leaves of mature trees and invigorating ocean breezes.

SIRBAHAMAS.COM/ID/2ZRXXV



Bahamas | Sotheby's
INTERNATIONAL REALTY

BAHAMAS SOTHEBY'S INTERNATIONAL REALTY | OFFICES THROUGHOUT THE BAHAMAS | +1 242.699.6333 | SIRBAHAMAS.COM

© 2024 Sotheby's International Realty. All Rights Reserved. Sotheby's International Realty® is a registered trademark and used with permission. Each Sotheby's International Realty office is independently owned and operated, except those operated by Sotheby's International Realty, Inc. The Sotheby's International Realty network fully supports the principles of the Fair Housing Act and the Equal Opportunity Act.



110 Ocean Club Estates, Paradise Island, The Bahamas

Nick Damianos
Estate Agent
+1 242.376.1841
Nick.Damianos
@SIRbahamas.com



110 Ocean Club Estates

8 BR | 8.5 BA | 16,220 SQ. FT.
\$22,350,000

Situated in the exclusive community of Ocean Club Estates on Paradise Island in the Bahamas, this waterfront estate occupies an enviable position with commanding views over Montagu Bay. Totalling 16,220 sq. ft., the home features 8 bedrooms (including 2 staff bedrooms), 8.5 bathrooms, 2 studies, a 3-car garage, an expansive waterfront pool deck and a boat dock spanning 130 feet.

SIRBAHAMAS.COM/ID/R6MZE4



Bahamas | Sotheby's
INTERNATIONAL REALTY

BAHAMAS SOTHEBY'S INTERNATIONAL REALTY | OFFICES THROUGHOUT THE BAHAMAS | +1 242.362.4211 | SIRBAHAMAS.COM

© 2024 Sotheby's International Realty. All Rights Reserved. Sotheby's International Realty® is a registered trademark and used with permission. Each Sotheby's International Realty office is independently owned and operated, except those operated by Sotheby's International Realty, Inc. The Sotheby's International Realty network fully supports the principles of the Fair Housing Act and the Equal Opportunity Act.



106 One Marina Palm Cay, The Bahamas



Mack Altidor
Estate Agent
+1 242.577.4283
Mack.Altidor
@SIRbahamas.com



106 One Marina
3 BR | 3.5 BA | 4,210 SQ. FT.
\$2,550,000

Nestled within a breathtaking 69-acre resort and residential enclave, this extraordinary three-bedroom waterfront residence directly overlooks a full-service, 194-slip marina. Spanning 3,614 sq. ft., and 596 exterior sq. ft., it epitomizes spacious, open-plan living with a harmonious blend of contemporary opulence and natural elegance.



SIRBAHAMAS.COM/ID/REEF5W

Bahamas | Sotheby's
INTERNATIONAL REALTY

BAHAMAS SOTHEBY'S INTERNATIONAL REALTY | OFFICES THROUGHOUT THE BAHAMAS | +1 242.322.2305 | SIRBAHAMAS.COM

© 2024 Sotheby's International Realty. All Rights Reserved. Sotheby's International Realty® is a registered trademark and used with permission. Each Sotheby's International Realty office is independently owned and operated, except those operated by Sotheby's International Realty, Inc. The Sotheby's International Realty network fully supports the principles of the Fair Housing Act and the Equal Opportunity Act.



Vista Del Mar Exuma Cays, The Bahamas

Jacqueline
Lightbourn
Estate Agent
+1 242.359.2225
Jacqueline.Lightbourn@
SIRbahamas.com



Vista Del Mar

5 BR | 5 BA | 3,485 SQ.FT.
\$3,350,000

Vista Del Mar is a stunning oceanfront home offering a grand entrance, spacious living areas, ocean-view bedrooms, and outdoor amenities including a 78 foot veranda, infinity pool and jacuzzi. Ideal for families and boaters, the property boasts a 90 ft dock and is strategically positioned to optimize its potential for vacation rentals.

[SIRBAHAMAS.COM/ID/437DCY](https://sirbahamas.com/id/437dcy)



Bahamas | Sotheby's
INTERNATIONAL REALTY

BAHAMAS SOTHEBY'S INTERNATIONAL REALTY | OFFICES THROUGHOUT THE BAHAMAS | +1 242.322.2305 | [SIRBAHAMAS.COM](https://sirbahamas.com)

© 2024 Sotheby's International Realty. All Rights Reserved. Sotheby's International Realty® is a registered trademark and used with permission. Each Sotheby's International Realty office is independently owned and operated, except those operated by Sotheby's International Realty, Inc. The Sotheby's International Realty network fully supports the principles of the Fair Housing Act and the Equal Opportunity Act.



Vineyard Homes at Stanly Ranch Auberge Resorts Collection



Hillary Ryan
DRE# 01934302
707.312.2105
hillary@hillaryryangroup.com
HillaryRyanGroup.com



106 Vintners Court

5 BR | 6.5 BA | 4,171± SQ. FT.
\$8,695,000

The Vineyard Homes at Stanly Ranch Auberge Resorts Collection are Napa Valley's premier destination for the resort lifestyle. Created with wellness, comfort, and generational gathering at the centerfold of this exquisite design, the thoughtful floor plan features an indoor-outdoor layout with a private, heated pool/spa, covered courtyard, covered loggias with fireplace.

106VINTNERSCT.COM



Sotheby's
INTERNATIONAL REALTY

SOTHEBY'S INTERNATIONAL REALTY - WINE COUNTRY OFFICES | 200 STANLY CROSSROAD, NAPA, CA 94559 | SOTHEBYSREALTY.COM

© 2024 Sotheby's International Realty. All Rights Reserved. Sotheby's International Realty® is a registered trademark and used with permission. Each Sotheby's International Realty office is independently owned and operated, except those operated by Sotheby's International Realty, Inc. The Sotheby's International Realty network fully supports the principles of the Fair Housing Act and the Equal Opportunity Act.

The Villas at Stanly Ranch

Auberge Resorts Collection

Hillary Ryan
DRE# 01934302
707.312.2105
hillary@hillaryryangroup.com
HillaryRyanGroup.com



1405 Stanly Lane, 3D

2 BR | 2.5 BA | 1,788± SQ. FT.
\$4,350,000

Nestled within Napa Valley's iconic Stanly Ranch, this Sky Villa promises an unparalleled luxury experience. Seamless indoor/outdoor living is integrated across the 2,653± total square foot fully-furnished residence. Vaulted ceilings and full-height glass doors open to a covered, outdoor venue overlooking vineyards and inspired contemporary architecture.

STANLYLANEVILLA-3D.COM



Sotheby's
INTERNATIONAL REALTY

SOTHEBY'S INTERNATIONAL REALTY - WINE COUNTRY OFFICES | 200 STANLY CROSSROAD, NAPA, CA 94559 | SOTHEBYSREALTY.COM

© 2024 Sotheby's International Realty. All Rights Reserved. Sotheby's International Realty® is a registered trademark and used with permission. Each Sotheby's International Realty office is independently owned and operated, except those operated by Sotheby's International Realty, Inc. The Sotheby's International Realty network fully supports the principles of the Fair Housing Act and the Equal Opportunity Act.

Stanly Ranch | Napa Valley Auberge Resorts Collection



200 Stanly Crossroad, Napa , CA
2-6 BEDROOM PRIVATE RESIDENCES STARTING AT \$3.6M



Hillary Ryan
DRE# 01934302
707.312.2105
hillary@hillaryryangroup.com
HillaryRyanGroup.com

The Residences at Stanly Ranch Auberge Resorts Collection offer Napa Valley's premier turnkey lifestyle. Each home promises a unique retreat with Auberge's unmatched service. Designed with wellness, ease, and community in mind, the Vineyard Homes & Villas blend rolling vines and distant mountains into the living space. Enjoy farm-driven dining, spa, fitness center, pools, and bespoke hospitality.

[STANLYRANCHNAPA.COM/RESIDENCES](https://stanlyranchnapa.com/residences)

Sotheby's
INTERNATIONAL REALTY

SOTHEBY'S INTERNATIONAL REALTY - WINE COUNTRY OFFICES | 200 STANLY CROSSROAD, NAPA, CA 94559 | [SOTHEBYSREALTY.COM](https://sothebysrealty.com)

© 2024 Sotheby's International Realty. All Rights Reserved. Sotheby's International Realty® is a registered trademark and used with permission. Each Sotheby's International Realty office is independently owned and operated, except those operated by Sotheby's International Realty, Inc. The Sotheby's International Realty network fully supports the principles of the Fair Housing Act and the Equal Opportunity Act.