

Sotheby's  
INTERNATIONAL REALTY



Real estate  
sold by  
real experts.

*Nothing compares.*

[SOTHEBYSREALTY.COM](https://www.sotbysrealty.com)

CALIFORNIA

BEVERLY HILLS

Represented by Marc Noah [1006NORTHCRESCENT.COM](https://www.1006NORTHCRESCENT.COM)





## Love Where You Live

There is a lot to love about living at HALL Arts Residences. The 28-story luxury high-rise offers one-of-a-kind luxury amenities and direct access to world-class museums, amazing restaurants, and spectacular performing arts venues in the heart of the Dallas Arts District.

Dallas Arts District  
Homes starting from \$3.5 million  
[hallartsresidences.com](http://hallartsresidences.com)



**CINDI CAUDLE**  
Global Real Estate Advisor  
214-991-2990  
[ccaudle@briggsfreeman.com](mailto:ccaudle@briggsfreeman.com)



**KYLE RICHARDS**  
Global Real Estate Advisor  
214-263-4065  
[krichards@briggsfreeman.com](mailto:krichards@briggsfreeman.com)

BRIGGS FREEMAN SOTHEBY'S INTERNATIONAL REALTY | 3131 TURTLECREEK BOULEVARD, FIFTH FLOOR | DALLAS, TEXAS 75219 | [BRIGGSFREEMAN.COM](http://BRIGGSFREEMAN.COM)

© 2023 Sotheby's International Realty. All Rights Reserved. Sotheby's International Realty® is a registered trademark and used with permission. Each Sotheby's International Realty office is independently owned and operated, except those operated by Sotheby's International Realty, Inc. The Sotheby's International Realty network fully supports the principles of the Fair Housing Act and the Equal Opportunity Act. Model home by Tiffany McKinzie.





*Table of Contents*

4 CALIFORNIA

27 NEVADA

32 OREGON

36 WASHINGTON

38 HAWAII

43 UTAH

44 MONTANA

46 NEW MEXICO

47 TEXAS

48 FLORIDA

54 MAINE

55 NEW YORK

56 PUERTO RICO

58 URUGUAY



**NAPA VALLEY, CALIFORNIA**



2900 Spring Mountain Road

7 BR | 6.5 BA | \$17,500,000

[neyshiago.com/property/2900-spring-mountain-rd-napa-valley](https://neyshiago.com/property/2900-spring-mountain-rd-napa-valley)

**NAPA VALLEY, CALIFORNIA**



2910 Spring Mountain Road

29.78 ACRES | \$17,500,000

[neyshiago.com/property/2910-spring-mountain-rd-napa-valley/](https://neyshiago.com/property/2910-spring-mountain-rd-napa-valley/)

**MALIBU, CALIFORNIA**



27715 Pacific Coast Highway

6 BR | 8 BA | \$18,999,000

[neyshiago.com/property/27715-pacific-coast-hwy-malibu](https://neyshiago.com/property/27715-pacific-coast-hwy-malibu)

**BEL AIR, CALIFORNIA**



10812 Portofino Place

5 BR | 4.5 BA | \$4,999,999

[neyshiago.com/property/10812-portofino-pl-bel-air/](https://neyshiago.com/property/10812-portofino-pl-bel-air/)



**NEYSHIA GO**

Global Real Estate Advisor

310.882.8357

[neyshia@neyshiago.com](mailto:neyshia@neyshiago.com)

SOTHEBY'S INTERNATIONAL REALTY - BEVERLY HILLS BROKERAGE | 9665 WILSHIRE BLVD STE 400 BEVERLY HILLS, CALIFORNIA 90212 | [SOTHEBYSREALTY.COM](https://SOTHEBYSREALTY.COM)

© 2023 Sotheby's International Realty. All Rights Reserved. Sotheby's International Realty® is a registered trademark and used with permission. Each Sotheby's International Realty office is independently owned and operated, except those operated by Sotheby's International Realty, Inc. The Sotheby's International Realty network fully supports the principles of the Fair Housing Act and the Equal Opportunity Act.





## 6858 Casitas Pass Road

Perfectly sited between the Santa Ynez mountains and Pacific Ocean, The Prancing Horse Estate is considered to be one of Carpinteria's trophy properties. With authentic Tuscan architecture by renowned local architect Don Nulty, the estate boasts over 12 acres of exquisitely manicured and landscaped grounds.

6858 Casitas Pass Road  
7 BR | 10 BA | \$19,985,000  
theprancinghorseestate.com



**NEYSHIA GO**  
Global Real Estate Advisor  
310.882.8357  
neyshia@neyshiago.com

SOTHEBY'S INTERNATIONAL REALTY - BEVERLY HILLS BROKERAGE | 9665 WILSHIRE BLVD STE 400 BEVERLY HILLS, CALIFORNIA 90212 | SOTHEBYSREALTY.COM

© 2023 Sotheby's International Realty. All Rights Reserved. Sotheby's International Realty® is a registered trademark and used with permission. Each Sotheby's International Realty office is independently owned and operated, except those operated by Sotheby's International Realty, Inc. The Sotheby's International Realty network fully supports the principles of the Fair Housing Act and the Equal Opportunity Act.





## Let Joy's years of Westside real estate experience work for you.

Joy Denton is a skilled Beverly Hills agent whose focus is always on her client's needs and goals. With over two decades of Westside real estate experience, Joy is known for her discretion, achieving record breaking prices for sellers, and her ability to find properties that check all the boxes for buyers.

### JOY DENTON

Senior Global Real Estate Advisor

310.266.9877 | DRE# 00794590

joy.denton@sothebys.realty | joydenton.com

### BEVERLY HILLS POST OFFICE, CALIFORNIA



### 3104 Hutton Drive

5 BR | 4.5 BA | \$3,898,000

3104HuttonDrive.com | **JUST LISTED**

### BEVERLY HILLS, CALIFORNIA



### 509 N Rodeo Drive

2 BR | 2 BA | \$6,000,000

**JUST SOLD**

SOTHEBY'S INTERNATIONAL REALTY - BEVERLY HILLS BROKERAGE | 9665 WILSHIRE BLVD STE 400 BEVERLY HILLS, CALIFORNIA 90212 | SOTHEBYSREALTY.COM

© 2023 Sotheby's International Realty. All Rights Reserved. Sotheby's International Realty® is a registered trademark and used with permission. Each Sotheby's International Realty office is independently owned and operated, except those operated by Sotheby's International Realty, Inc. The Sotheby's International Realty network fully supports the principles of the Fair Housing Act and the Equal Opportunity Act.



**BEL AIR, CALIFORNIA**



1859 Bel Air Road | Bel Air's latest architectural triumph, with a \$1.5M Staircase.

9 BR | 13.0 BA | \$68,000,000 [belair1859.com](http://belair1859.com)

Enveloped in the lush landscape and bound by the masterful vision of icons in quality and thoughtful execution by award-winning architectural firm Tag Front.

**BEVERLY HILLS, CALIFORNIA**



917 Loma Vista Drive | Nearly 2 acre compound.

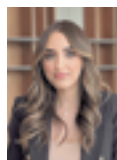
7 BR | 13.0 BA | \$23,999,000

**BEVERLY HILLS, CALIFORNIA**



1024 Summit Drive | Gated with ultimate privacy.

7 BR | 9 BA | \$19,999,000



**CHANTEL MEHRABIAN**

Sales Associate

310.994.4778

[chantel.mehraban@sothebysrealty.com](mailto:chantel.mehraban@sothebysrealty.com)

SOTHEBY'S INTERNATIONAL REALTY - BEVERLY HILLS BROKERAGE | 9665 WILSHIRE BLVD STE 400 BEVERLY HILLS, CALIFORNIA 90212 | [SOTHEBYSREALTY.COM](http://SOTHEBYSREALTY.COM)

© 2023 Sotheby's International Realty. All Rights Reserved. Sotheby's International Realty® is a registered trademark and used with permission. Each Sotheby's International Realty office is independently owned and operated, except those operated by Sotheby's International Realty, Inc. The Sotheby's International Realty network fully supports the principles of the Fair Housing Act and the Equal Opportunity Act.





## A Leader in Luxury Real Estate: Meet Lori Hashman Berris

Lori, a top luxury agent at Sotheby's International Realty, is a distinguished leader in the luxury real estate market, with numerous awards and recognition to her name. Her exceptional performance has earned her #26 among the Top 100 agents in the country and Top 10 in Beverly Hills.

**LORI HASHMAN BERRIS**  
Sr. Global Real Estate Advisor  
310.880.3061  
lori.berris@sothebys.realty

### BEVERLY HILLS, CALIFORNIA



916 Benedict Canyon Drive

7 BR | 7.5 BA | 6,840 SQFT

Sold for \$13,600,000

### LOS ANGELES, CALIFORNIA



145 N Rossmore Ave

6BR | 7 BA | 3,119 SQFT

Sold for \$10,639,000

### BEVERLY HILLS, CALIFORNIA



520 North Rexford Drive

6 BR | 5.5 BA | \$2,195,000

Sold for \$8,970,000

SOTHEBY'S INTERNATIONAL REALTY - BEVERLY HILLS BROKERAGE | 9665 WILSHIRE BLVD STE 400 BEVERLY HILLS, CALIFORNIA 90212 | SOTHEBYSREALTY.COM

© 2023 Sotheby's International Realty. All Rights Reserved. Sotheby's International Realty® is a registered trademark and used with permission. Each Sotheby's International Realty office is independently owned and operated, except those operated by Sotheby's International Realty, Inc. The Sotheby's International Realty network fully supports the principles of the Fair Housing Act and the Equal Opportunity Act.



CENTURY CITY, CALIFORNIA



10110 Empyrean Way, Unit 204

2 BR | 2.5 BA | \$4,250,000

leparc10-204.com

CENTURY CITY, CALIFORNIA



2309 Century Hill

2 BR | 2.5 BA | \$1,815,000

2309centuryhill.com

CENTURY CITY, CALIFORNIA



10124 Empyrean Way, Unit 204

2 BR | 2.5 BA | \$2,295,000

10124EmpyreanWay204.com

CENTURY CITY, CALIFORNIA



10126 Empyrean Way, Unit 302

3 BR | 3.5 BA | \$2,795,000

10126Empyrean302.com

LOS ANGELES, CALIFORNIA



10375 Wilshire Boulevard, 11F

2 BR | 2.5 BA | \$1,675,000

10375Wilshire11F.com

CENTURY CITY, CALIFORNIA



10108 Empyrean Way, Unit 202

2 BR | 2.5 BA | \$4,500,000

10108Empyrean202.com

**LORI HASHMAN BERRIS**

Sr. Global Real Estate Advisor

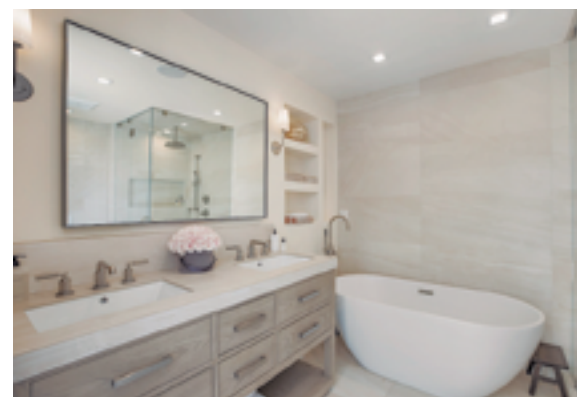
310.880.3061

lori.berris@sothebys.realty

SOTHEBY'S INTERNATIONAL REALTY - BEVERLY HILLS BROKERAGE | 9665 WILSHIRE BLVD STE 400 BEVERLY HILLS, CALIFORNIA 90212 | SOTHEBYSREALTY.COM

© 2023 Sotheby's International Realty. All Rights Reserved. Sotheby's International Realty® is a registered trademark and used with permission. Each Sotheby's International Realty office is independently owned and operated, except those operated by Sotheby's International Realty, Inc. The Sotheby's International Realty network fully supports the principles of the Fair Housing Act and the Equal Opportunity Act.

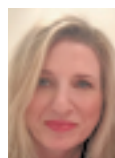




## Hollywood Hills

Nestled in the Hollywood Hills above Chateau Marmont. Breathtaking views spanning from Downtown LA across the city to the ocean.

1530 Marlay Drive | Los Angeles  
3 BR | 3.5 BA | \$3,500,000  
1530Marlay.com



**CATHERINE ROSS**  
Sales Associate | catherinerossLA.com  
310.882.9589 | DRE#02085322  
catherine@catherinerossLA.com

SOTHEBY'S INTERNATIONAL REALTY - BEVERLY HILLS BROKERAGE | 9665 WILSHIRE BLVD STE 400 BEVERLY HILLS, CALIFORNIA 90212 | SOTHEBYSREALTY.COM

© 2023 Sotheby's International Realty. All Rights Reserved. Sotheby's International Realty® is a registered trademark and used with permission. Each Sotheby's International Realty office is independently owned and operated, except those operated by Sotheby's International Realty, Inc. The Sotheby's International Realty network fully supports the principles of the Fair Housing Act and the Equal Opportunity Act.





## 8495 Hillside Avenue

Striking views await you with 3 lots totaling nearly 1/2 acre ready for your next opportunity. On this rare private 3 parcel lot sits a Spanish style home that is perfect to live in or create the ultimate Sunset Strip large Estate per a recent Development Survey. Perched above the Sunset Strip with dramatic panoramic views of Downtown LA, this former celebrity home can be your private sanctuary or you can build your dream home.

8495 Hillside Avenue  
3 BR | 2.0 BA | \$5,950,000  
8495HillsideAve.com



**GUY MIRACLE**  
Sales Associate  
323.646.6216 | guymiracle.com  
guy.miracle@sothebys.realty

SOTHEBY'S INTERNATIONAL REALTY - BEVERLY HILLS BROKERAGE | 9665 WILSHIRE BLVD STE 400 BEVERLY HILLS, CALIFORNIA 90212 | SOTHEBYSREALTY.COM

© 2023 Sotheby's International Realty. All Rights Reserved. Sotheby's International Realty® is a registered trademark and used with permission. Each Sotheby's International Realty office is independently owned and operated, except those operated by Sotheby's International Realty, Inc. The Sotheby's International Realty network fully supports the principles of the Fair Housing Act and the Equal Opportunity Act.



**BEVERLY HILLS, CALIFORNIA**



9315 Beverly Crest

4 BR | 5 BA | \$3,350,000

**SOLD | REPRESENTED BUYER**

**HANCOCK PARK, CALIFORNIA**



106 South Mansfield Ave

6 BR | 5.5 BA | \$2,950,000

**SOLD**

**WESTWOOD, CALIFORNIA**



10430 Wilshire #704

2 BR | 3 BA | \$2,271,000

**SOLD**

**BEVERLY GROVE, CALIFORNIA**



7307 Oakwood Ave

3 BR | 3 BA | \$1,499,000

**SOLD**

**CENTURY CITY, CALIFORNIA**



2170 Century Hill

2 BR | 3 BA | \$1,399,000

**SOLD | REPRESENTED BUYER**

**BEVERLY HILLS, CALIFORNIA**



248 Doheny #3 & #6

2 BR | 2 BA | \$870,000

**SOLD**

**WEST HOLLYWOOD, CALIFORNIA**



9040 Sunset Blvd #1101

3 BR | 4 BA | \$43,000/MONTH

**LEASED | REPRESENTED BUYER**

**BEVERLY HILLS, CALIFORNIA**



602 North Whittier Drive

6 BR | 6 BA | \$35,000/MONTH

**LEASED | REPRESENTED BUYER**

**BEL AIR, CALIFORNIA**



1000 Stone Canyon Road

3 BR | 4BA | \$11,000/MONTH

**LEASED**



**TANYA STAWASKI**

Global Real Estate Advisor

DRE# 01918308 | 310.801.6033

tanya.stawski@sothebys.realty | tanyastawski.com

SOTHEBY'S INTERNATIONAL REALTY - BEVERLY HILLS BROKERAGE | 9665 WILSHIRE BLVD STE 400 BEVERLY HILLS, CALIFORNIA 90212 | SOTHEBYSREALTY.COM

© 2023 Sotheby's International Realty. All Rights Reserved. Sotheby's International Realty® is a registered trademark and used with permission. Each Sotheby's International Realty office is independently owned and operated, except those operated by Sotheby's International Realty, Inc. The Sotheby's International Realty network fully supports the principles of the Fair Housing Act and the Equal Opportunity Act.





## Two Acre Brentwood Tennis Court Estate

Nestled on two private and serene acres, this mostly one-story ranch home is a magical sanctuary. Meticulously maintained celebrity estate with over 280' of frontage right in the heart of Brentwood. Art-Deco Theater | Gym | Waterfall Pool & Spa | Pool House | Tennis Court | Outdoor Yoga Platform

BRENTWOOD | LOS ANGELES 90049  
5 BR | 9 BA | OFFERED AT \$28,900,000  
PrivateBrentwoodEstate.com



**JANELLE FRIEDMAN**  
Sales Associate | DRE 00991146  
310.850.3635 | janellefriedman.com  
janelle.friedman@sothebys.realty

SOTHEBY'S INTERNATIONAL REALTY | PACIFIC PALISADES BROKERAGE | SOTHEBYSREALTY.COM

© 2023 Sotheby's International Realty. All Rights Reserved. Sotheby's International Realty® is a registered trademark and used with permission. Each Sotheby's International Realty office is independently owned and operated, except those operated by Sotheby's International Realty, Inc. The Sotheby's International Realty network fully supports the principles of the Fair Housing Act and the Equal Opportunity Act.



**SUNSET STRIP, CALIFORNIA**



8967 Shoreham Drive

5 BR | 5 BA | FOR SALE AT \$5,495,000 OR FOR LEASE \$25,000/MONTH [PrimeSSJewel.com](http://PrimeSSJewel.com)

This contemporary corner home is the epitome of modern luxury, the perfect blend of style and sophistication. Nestled behind double gates, it provides unrivaled privacy and security.

**BRENTWOOD | LOS ANGELES, CALIFORNIA**



11500 San Vicente Boulevard 417

2 BR | 2.5 BA | \$1,500,000

[BW417.com](http://BW417.com)

**WEST HOLLYWOOD, CALIFORNIA**



524 North San Vicente Boulevard

FRONT 3BR+2BA & REAR UNIT 2BR+1BA \$1,750,000

[WehoDuplex.com](http://WehoDuplex.com)



**ENZO RICCIARDELLI**

Broker Associate | Top 10 Agent

310.853.3837

[enzo.ricciardelli@sir.com](mailto:enzo.ricciardelli@sir.com)

SOTHEBY'S INTERNATIONAL REALTY - PACIFIC PALISADES | [SOTHEBYSREALTY.COM](http://SOTHEBYSREALTY.COM)



## Alexandra Pfeifer

### #1 Agent in Sold Units

Pacific Palisades Brokerage

Recognized as one of Los Angeles Magazine's 2023 Real Estate All-Stars.

#### ALEXANDRA PFEIFER

Sales Associate | DRE 01743378

310.650.3540

alexandra@alexandrapfeifer.com

#### PACIFIC PALISADES | PENDING



720 Brooktree Road

5 BR | 5 BA | ASKING PRICE \$7,495,000

#### BRENTWOOD | SOLD \$500K OVER ASKING



1208 South Anita Avenue

5 BR | 5 BA | ASKING PRICE \$5,595,000

#### PACIFIC PALISADES | SOLD



1053 Lachman Lane

4 BR | 3 BA | ASKING PRICE \$3,499,000

Represented Buyer

SOTHEBY'S INTERNATIONAL REALTY - PACIFIC PALISADES BROKERAGE | SOTHEBYSREALTY.COM





## Luxury Living with Ocean View

The traditional ranch-style home set in the Pacific View Estates of the Pacific Palisades offers peaceful ocean views from indoors and beside the poolside garden. Offered as a short-term lease, it hosts an open living room and dining room, family room and kitchen with breakfast room, Five bedrooms or four and a separate office suite with bath. Home is available for Lease from July 1 through October 31.

17950 Seabreeze Drive  
5 BR | 3 BA | Private Office | Ocean View  
Pacific Palisades



**PAULA ROSS JONES**  
Global Luxury Specialist  
310.880.9750  
prmalibu@aol.com | DRE 01157578

SOTHEBY'S INTERNATIONAL REALTY | PACIFIC PALISADES, | SOTHEBYSREALTY.COM

© 2023 Sotheby's International Realty. All Rights Reserved. Sotheby's International Realty® is a registered trademark and used with permission. Each Sotheby's International Realty office is independently owned and operated, except those operated by Sotheby's International Realty, Inc. The Sotheby's International Realty network fully supports the principles of the Fair Housing Act and the Equal Opportunity Act.



**CARMEL-BY-THE-SEA, CALIFORNIA**



SE Corner of Scenic & 9th

4 BR | 4 BA | 1 HBA | \$18,500,000 SEAGLASSONSCENIC.COM

**SANTA LUCIA PRESERVE, CARMEL, CALIFORNIA**



42 Rancho San Carlos

5 BR | 4 BA | 3 HBA | \$6,595,000 42RANCHOSANCARLOS.COM



**CANNING PROPERTIES GROUP**

831.238.9718

team@canningproperties.com

canningproperties.com

CARMEL RANCHO | 3775 VIA NONA MARIE, SUITE 100 CARMEL, CA 93923 | SOTHEBYSREALTY.COM





## Robin Walpert

### #1 Top Producer

Santa Monica-Venice Brokerage

Recognized as one of Los Angeles Magazine's 2023 Real Estate All-Stars.

#### ROBIN WALPERT

Senior Global Real Estate Advisor

310.480.4980

robin.walpert@sothebysrealty.com

#### SOLD | MAR VISTA



3967 East Boulevard

5 BR | 6 BA | \$4,144,500

3967east.com

#### SOLD | SANTA MONICA



420 Ocean Park Boulevard

4 BR | 4 BA | \$2,375,000

420oceanpark.com

#### SOLD | SANTA MONICA



825 Woodacres Road

6 BR | 5 BA | \$11,351,000

Represented Buyer

SOTHEBY'S INTERNATIONAL REALTY - SANTA MONICA - VENICE BROKERAGE | 233 WILSHIRE BLVD SUITE 290 SANTA MONICA, CALIFORNIA 90401 | SOTHEBYSREALTY.COM

© 2023 Sotheby's International Realty. All Rights Reserved. Sotheby's International Realty® is a registered trademark and used with permission. Each Sotheby's International Realty office is independently owned and operated, except those operated by Sotheby's International Realty, Inc. The Sotheby's International Realty network fully supports the principles of the Fair Housing Act and the Equal Opportunity Act.



## Congratulations Lorae K Tayler Ranked #2 Agent

Santa Monica - Venice Brokerage

Experience, marketing expertise, negotiating skills and sensitivity to the client's needs, goals and objectives are the mark of a truly effective and successful REALTOR®

### LORAE K TAYLER

Broker's Associate

310.864.6910

lorae.tayler@sothebysrealty.com

### SANTA MONICA, CALIFORNIA



**SOLD** | 812 17th Street 2

**3 BR | 3 BA | \$2,285,000 | REPRESENTED SELLER & BUYER**

### VENICE, CALIFORNIA



**ACTIVE** | 529 Rialto Avenue

**4 BR | 4.5 BA | \$4,245,000**

SOTHEBY'S INTERNATIONAL REALTY - SANTA MONICA - VENICE BROKERAGE | 233 WILSHIRE BLVD SUITE 290 SANTA MONICA, CALIFORNIA 90401 | SOTHEBYSREALTY.COM

© 2023 Sotheby's International Realty. All Rights Reserved. Sotheby's International Realty® is a registered trademark and used with permission. Each Sotheby's International Realty office is independently owned and operated, except those operated by Sotheby's International Realty, Inc. The Sotheby's International Realty network fully supports the principles of the Fair Housing Act and the Equal Opportunity Act.





## Coming Soon C. 1921 | Los Feliz

Architecturally stunning 1920's Mediterranean Estate, on a flat  $\frac{3}{4}$  acre parcel with panoramic views of downtown, originally built for silent film director/composer Victor Schertzinger, has been meticulously restored and updated under the direction of renowned architect Richard Manion to create the ultimate in dreamy old Hollywood glamour with today's top curated style. Romantic, beautiful and private.

4120 Cromwell Avenue, Los Feliz, CA 90027  
5 BR | 8 BA | \$12,750,000  
Approx. 7,800 sq.ft. | 29,000 sq.ft. Lot Size



**BRYAN ABRAMS**  
Broker Associate  
818.266.4300 | dre#01238720  
Bryan@BryanAbrams.com  
BryanAbrams.com

SHERMAN OAKS BROKERAGE | 13501 VENTURA BLVD. SHERMAN OAKS, CA 91423 | [SOTHEBYSREALTY.COM](https://www.sothebysrealty.com)

© 2023 Sotheby's International Realty. All Rights Reserved. Sotheby's International Realty® is a registered trademark and used with permission. Each Sotheby's International Realty office is independently owned and operated, except those operated by Sotheby's International Realty, Inc. The Sotheby's International Realty network fully supports the principles of the Fair Housing Act and the Equal Opportunity Act.



DEL MAR, CALIFORNIA



117 6th Street

5 BR | 5.5 BA | \$14,900,000

[sothebysrealty.com/id/CGBNBL](https://sothebysrealty.com/id/CGBNBL)

SOLANA BEACH, CALIFORNIA



521 South Rios Avenue

7 BR | 10.0 BA | \$12,500,000

[sothebysrealty.com/id/DMLDWH](https://sothebysrealty.com/id/DMLDWH)

RANCHO SANTA FE, CALIFORNIA



15608 Via De Santa Fe

8 BR | 6.5 BA | \$6,950,000

[sothebysrealty.com/id/4M2M25](https://sothebysrealty.com/id/4M2M25)

ENCINITAS, CALIFORNIA



742 Arden Drive

3 BR | 4.0 BA | \$3,299,000

[sothebysrealty.com/id/J2G3FG](https://sothebysrealty.com/id/J2G3FG)



**ERIC IANTORNO**

Sales Associate | DRE# 01256501

858.334.3577

[eric@ericiantorno.com](mailto:eric@ericiantorno.com)

PACIFIC SOTHEBY'S INTERNATIONAL REALTY | 330 S. CEDROS AVENUE, SUITE 203, SOLANA BEACH, CALIFORNIA 92075 | [SOTHEBYSREALTY.COM](https://SOTHEBYSREALTY.COM)

© 2023 Sotheby's International Realty. All Rights Reserved. Sotheby's International Realty® is a registered trademark and used with permission. Each Sotheby's International Realty office is independently owned and operated, except those operated by Sotheby's International Realty, Inc. The Sotheby's International Realty network fully supports the principles of the Fair Housing Act and the Equal Opportunity Act.





## *Wynne + Morgensen*

*TWO DECADES STRONG*

*Sheri Morgensen and Jessica Wynne – Market Leaders in Healdsburg's Wine Country*

Sheri Morgensen and Jessica Wynne introduced the Sotheby's International Realty brand to Northern Sonoma County's Wine Country in 2003. With over \$1.2 Billion in sales volume and 50+ years of combined experience, our partnership has set the standard for service in luxury real estate sales in Healdsburg and its surrounding areas.

### **SHERI MORGENSEN**

Broker Associate | DRE# 00554052  
707.431.0777  
sheri.morgensen@sothebys.realty

### **JESSICA WYNNE**

Broker Associate | DRE#01318265  
415.509.2611  
jessica.wynne@sothebys.realty

#### **ARTFUL SANCTUARY IN ALEXANDER VALLEY**



3155 Ridge Oaks Road

4 BR | 5 BA | \$2,495,000

3155RidgeOaks.com

#### **QUINTESSENTIAL WINE COUNTRY LIVING**



21565 Geyser Vista Lane

3 BR | 3.5 BA | \$3,850,000

GeyserVista.com

#### **MODERN BALINESE-INSPIRED RETREAT**



24600 Dutcher Creek Road

3 BR | 2 BA | \$2,995,000

24600DutcherCreek.com

SOTHEBY'S INTERNATIONAL REALTY - SAN FRANCISCO BROKERAGE | 117 GREENWICH STREET, SAN FRANCISCO, CA 94111 | SOTHEBYSREALTY.COM

© 2023 Sotheby's International Realty. All Rights Reserved. Sotheby's International Realty® is a registered trademark and used with permission. Each Sotheby's International Realty office is independently owned and operated, except those operated by Sotheby's International Realty, Inc. The Sotheby's International Realty network fully supports the principles of the Fair Housing Act and the Equal Opportunity Act.





## The EqWine Estate

The EqWine Estate, so named for its seamless marriage of world class wine and equestrian facilities, is like no other in Sonoma County. Sited on 42± acres with a highly profitable equestrian facility, the main residence is of a contemporary hacienda style and offers 7,000± sq.ft. of simply elegant living space. Gaze across the swimming pool complex and drink in the most mesmerizing sunsets in Wine Country.

2420 Mountain Ranch Road  
4 BR | 5.5 BA | \$11,500,000  
EqWineEstate.com



**TIM RANGEL**  
Broker Associate | DRE# 01280958  
707.280.1700  
tim.rangel@sothebys.realty

SOTHEBY'S INTERNATIONAL REALTY - WINE COUNTRY - SONOMA BROKERAGE | 793 BROADWAY, SONOMA, CA 95476 | SOTHEBYSREALTY.COM

© 2023 Sotheby's International Realty. All Rights Reserved. Sotheby's International Realty® is a registered trademark and used with permission. Each Sotheby's International Realty office is independently owned and operated, except those operated by Sotheby's International Realty, Inc. The Sotheby's International Realty network fully supports the principles of the Fair Housing Act and the Equal Opportunity Act.





## Stunning Lake and Mountain Views

Located on the 16th hole of the private PGA Weiskopf golf course, this desirable Heritage 3 floor plan overlooks the lake with mountain views. Features include an oversized detached casita, a private pool along the side of the home, a stone waterfall jacuzzi, water fountain, smart home controls and a three-car garage. This home has been meticulously maintained. A golf membership is available.

80304 Riviera, La Quinta, California  
4 BR | 5 BA | 3,536 SF | \$1,799,000  
[sothebysrealty.com/id/9HT63N](https://www.sothebysrealty.com/id/9HT63N)



**TYSON HAWLEY**  
Sales Associate DRE# 01995154  
310.612.4584  
[tyson.hawley@sothebysrealty.com](mailto:tyson.hawley@sothebysrealty.com)

DESERT SOTHEBY'S INTERNATIONAL REALTY | 74-890 HWY 111, INDIAN WELLS, CALIFORNIA 92210 | [DESERTSOTHEBYSREALTY.COM](https://www.DESERTSOTHEBYSREALTY.COM)

© 2023 Sotheby's International Realty. All Rights Reserved. Sotheby's International Realty® is a registered trademark and used with permission. Each Sotheby's International Realty office is independently owned and operated, except those operated by Sotheby's International Realty, Inc. The Sotheby's International Realty network fully supports the principles of the Fair Housing Act and the Equal Opportunity Act.





## New Construction in Stone Eagle

This is a rare opportunity to own a brand new home less than two miles to El Paseo, known for its fine shopping, restaurants and art galleries. This home sits on a stream near the lake and is adjacent to the famed Stone Eagle Golf Club. Enjoy amazing mountain views and high-end finishes. A second newly built home is also available within this stunning, gated community; contact me for more details.

72272 Bajada Trail, Palm Desert, California  
4 BR | 5 BA | \$2,950,000  
[sothebysrealty.com/id/RZDSEQ](https://sothebysrealty.com/id/RZDSEQ)



**KELLY TREMBLEY**  
Sales Associate DRE# 01766351  
760.534.3216  
[kelly.trembley@sothebysrealty.com](mailto:kelly.trembley@sothebysrealty.com)

DESERT SOTHEBY'S INTERNATIONAL REALTY | 74-890 HWY 111, INDIAN WELLS, CALIFORNIA 92210 | [DESERTSOTHEBYSREALTY.COM](https://DESERTSOTHEBYSREALTY.COM)

© 2023 Sotheby's International Realty. All Rights Reserved. Sotheby's International Realty® is a registered trademark and used with permission. Each Sotheby's International Realty office is independently owned and operated, except those operated by Sotheby's International Realty, Inc. The Sotheby's International Realty network fully supports the principles of the Fair Housing Act and the Equal Opportunity Act.





## Palos Verdes Blufftop Estate

Rare Bluffside Opportunity in a spectacular location with astounding views of Malibu, Point Dume, Santa Monica, the Calabasas mountains, the Hollywood sign, snow-capped Mountains, downtown Los Angeles and the South Bay Coastline. This gated property encompasses an isolated point on a secluded 34,386 square foot lot (btv). This unique heirloom property simply must be experienced to be truly appreciated.

1757 Paseo Del Mar, Palos Verdes Estates, CA  
7 BR | 5.5 BA | \$14,000,000  
[sothebysrealty.com/id/G356TC](https://sothebysrealty.com/id/G356TC)



**JEFF AMBERG**  
Global Real Estate Advisor  
310.404.4059  
[jeff.amberg@vistasir.com](mailto:jeff.amberg@vistasir.com)

SCAN FOR DETAILS



VISTA SOTHEBY'S INTERNATIONAL REALTY | 16 MALAGA COVE PLAZA | PALOS VERDES ESTATES, CA 90274 | [VISTASIR.COM](https://VISTASIR.COM)

© 2023 Sotheby's International Realty. All Rights Reserved. Sotheby's International Realty® is a registered trademark and used with permission. Each Sotheby's International Realty office is independently owned and operated, except those operated by Sotheby's International Realty, Inc. The Sotheby's International Realty network fully supports the principles of the Fair Housing Act and the Equal Opportunity Act.





## Upgraded Custom Ridges Estate

Incredible home in The Ridges has been updated and upgraded to the max with exquisite, tasteful finishes. Take in gorgeous unobstructed views. Enjoy open floor plan living with a kitchen complete with large island and top of line appliances. The large great room has two fireplaces, sitting area with aquarium and wet bar. The basement features state of the art theater, huge game room and more.

15 Wild Ridge Court  
6 BR | 8 BA | 9,913 SF | \$7,500,000  
[sothebysrealty.com/id/VGH5HD](https://sothebysrealty.com/id/VGH5HD)



**ELAINE CHERNINE**  
Sales Associate S.0015245  
702.596.2156  
[elaine.chernine@sothebysrealty.com](mailto:elaine.chernine@sothebysrealty.com)



**TOM MARSAW**  
Managing Broker B.0007490.LLC  
702.376.0122  
[thomas.marsaw@sothebysrealty.com](mailto:thomas.marsaw@sothebysrealty.com)

LAS VEGAS SOTHEBY'S INTERNATIONAL REALTY | 8548 ROZITA LEE AVE, 100 LAS VEGAS, NEVADA 89113 | [LASVEGASSIR.COM](https://LASVEGASSIR.COM)

© 2023 Sotheby's International Realty. All Rights Reserved. Sotheby's International Realty® is a registered trademark and used with permission. Each Sotheby's International Realty office is independently owned and operated, except those operated by Sotheby's International Realty, Inc. The Sotheby's International Realty network fully supports the principles of the Fair Housing Act and the Equal Opportunity Act.





## Randy Char, President & Corporate Broker

Randy Char has 25+ years of experience in Las Vegas as a sales leader, luxury producer and broker with a proven track record and a continued penchant for success. He was ranked #4 in Individuals by Sales Volume in Nevada by RealTrends + Tom Ferry's 'America's Best Real Estate Professionals' in 2022.

### RANDY CHAR

President & Corporate Broker B.0143566.LLC

702.544.0384

randy.char@sothebysrealty.com

### LAS VEGAS, NEVADA



### 68 Wildwing Court

5 BR | 7 BA | 9,318 SF | \$6,000,000

[sothebysrealty.com/id/KEKF6M](https://sothebysrealty.com/id/KEKF6M)

### LAS VEGAS, NEVADA



### 2045 Grouse Street

4 BR | 6 BA | 4,215 SF | \$1,800,000

[sothebysrealty.com/id/7L9425](https://sothebysrealty.com/id/7L9425)

### LAS VEGAS, NEVADA



### 9101 Alta Drive #10

2 BR | 3 BA | 2,062 SF | \$925,000

[sothebysrealty.com/id/WLMNB6](https://sothebysrealty.com/id/WLMNB6)

LAS VEGAS SOTHEBY'S INTERNATIONAL REALTY | 8548 ROZITA LEE AVE, 100 LAS VEGAS, NEVADA 89113 | [LASVEGASSIR.COM](https://LASVEGASSIR.COM)

© 2023 Sotheby's International Realty. All Rights Reserved. Sotheby's International Realty® is a registered trademark and used with permission. Each Sotheby's International Realty office is independently owned and operated, except those operated by Sotheby's International Realty, Inc. The Sotheby's International Realty network fully supports the principles of the Fair Housing Act and the Equal Opportunity Act.





## Fully Remodeled Home in The Ridges

This resort-style estate is perfect for all ages. Boasting a basketball area, pool with water slide and oversized wet deck, an indoor/outdoor bar, firepit, outdoor kitchen with ceiling mounted infrared heaters, a wine cellar and much more. The downstairs primary suite features a fireplace and massive walk-in closet. Four-car garage that can accommodate a car lift, boat or RV. You'll never want to leave.

20 Skybird Court  
5 BR | 7 BA | 6,431 SF | \$5,500,000  
[sothebysrealty.com/id/ZH4KHP](https://sothebysrealty.com/id/ZH4KHP)



**LISA LOPEZ**  
Global Real Estate Advisor  
S.0191182.LLC  
702.683.0875  
[lisa.lopez@sothebysrealty.com](mailto:lisa.lopez@sothebysrealty.com)

LAS VEGAS SOTHEBY'S INTERNATIONAL REALTY | 8548 ROZITA LEE AVE, 100 LAS VEGAS, NEVADA 89113 | [LASVEGASSIR.COM](https://LASVEGASSIR.COM)

© 2023 Sotheby's International Realty. All Rights Reserved. Sotheby's International Realty® is a registered trademark and used with permission. Each Sotheby's International Realty office is independently owned and operated, except those operated by Sotheby's International Realty, Inc. The Sotheby's International Realty network fully supports the principles of the Fair Housing Act and the Equal Opportunity Act.





## Blue Heron Home with Strip Views

This wonderfully designed home is a semi-custom, energy efficient marvel with breathtaking views from almost every room and packed with \$225,500 in upgrades. The downstairs includes a junior suite and large dining/living room area, while upstairs has a large loft that serves as a bonus living and entertainment area. To learn more, follow me on YouTube, Instagram & TikTok at KaoriLuxuryRealEstate.

1172 Monte de Luz Way  
4 BR | 4 BA | 3,934 SF | \$2,150,000  
[sothebysrealty.com/id/7CLSXB](https://sothebysrealty.com/id/7CLSXB)



**KAORI NAGAO-CHITI**  
Global Real Estate Advisor BS.0145932  
702.577.7659  
[kaori.nagaochiti@sothebysrealty.com](mailto:kaori.nagaochiti@sothebysrealty.com)

LAS VEGAS SOTHEBY'S INTERNATIONAL REALTY | 8548 ROZITA LEE AVE, 100 LAS VEGAS, NEVADA 89113 | [LASVEGASSIR.COM](https://LASVEGASSIR.COM)

© 2023 Sotheby's International Realty. All Rights Reserved. Sotheby's International Realty® is a registered trademark and used with permission. Each Sotheby's International Realty office is independently owned and operated, except those operated by Sotheby's International Realty, Inc. The Sotheby's International Realty network fully supports the principles of the Fair Housing Act and the Equal Opportunity Act.





## Las Vegas Luxury at Waldorf Astoria

Take in breathtaking views overlooking the iconic Las Vegas Strip and Bellagio fountains at the Strip's most lavish hotel. This intimate suite comes fully furnished and decorated. You're just an elevator ride from all the best Las Vegas has to offer. Just stock the kitchen, wine chiller, and unwind. If you want the very best in high rise living with a Las Vegas Boulevard address, then this is the residence for you!

3750 Las Vegas Boulevard South # 2609  
2 BR | 3 BA | 2,094 SF | \$2,550,000  
[sothebysrealty.com/id/8RZW57](https://sothebysrealty.com/id/8RZW57)



**ISAAC F. "IKE" MOORE**  
Global Real Estate Advisor BS.0143604  
702.306.5866  
[isaac.moore@sothebysrealty.com](mailto:isaac.moore@sothebysrealty.com)

LAS VEGAS SOTHEBY'S INTERNATIONAL REALTY | 8548 ROZITA LEE AVE, 100 LAS VEGAS, NEVADA 89113 | [LASVEGASSIR.COM](https://LASVEGASSIR.COM)

© 2023 Sotheby's International Realty. All Rights Reserved. Sotheby's International Realty® is a registered trademark and used with permission. Each Sotheby's International Realty office is independently owned and operated, except those operated by Sotheby's International Realty, Inc. The Sotheby's International Realty network fully supports the principles of the Fair Housing Act and the Equal Opportunity Act.





## Gateway to Your Dream Farm Estate

Opportunities abound with this exquisite 43 acre turn-key estate offering water rights, olive orchard, trails, indoor arena, barn, and event venue with state of the art kitchen. The pristine light infused one level home offers easy living with serene views from every window. This is an offering that rarely comes on the market. Don't miss this unique opportunity!

10236 Matthieu Lane, Aurora, OR 97002  
4 BR | 3.2 BA | \$2,699,000  
MLS# 23413729  
[sothebysrealty.com/id/HY4LYE](https://sothebysrealty.com/id/HY4LYE)



**LAURA PICCARD**  
Broker  
503.200.9853  
[laura.piccard@cascadesir.com](mailto:laura.piccard@cascadesir.com)



**TINA JACOBSEN**  
Broker  
503.680.8140  
[tina.jacobsen@cascadesir.com](mailto:tina.jacobsen@cascadesir.com)

CASCADE HASSON SOTHEBY'S INTERNATIONAL REALTY | 310 N. STATE STREET, LAKE OSWEGO, OREGON, 97034 | [CASCADEHASSONSIR.COM](https://CASCADEHASSONSIR.COM)

© 2023 Sotheby's International Realty. All Rights Reserved. Sotheby's International Realty® is a registered trademark and used with permission. Each Sotheby's International Realty office is independently owned and operated, except those operated by Sotheby's International Realty, Inc. The Sotheby's International Realty network fully supports the principles of the Fair Housing Act and the Equal Opportunity Act.





## Your Dedicated Portland Resource

### ALISON DERSE

Licensed Broker in the State of Oregon  
503.748.9818  
alison.derse@cascadesir.com

My name is Alison Derse and I'm a Realtor at Cascade Hasson Sotheby's International Realty in Portland, Oregon. I am a native Angeleno (hi mom!) and I lived in California for the better part of three decades. Several years back, my family and I moved to Portland. We were drawn north by so much: My love of beautiful green spaces, charming homes with character, creative energy, and the exciting promise of building a community with our neighbors. If you're looking for a more affordable lifestyle and are interested in a potential move, I'd love to connect and share my experience living here. I am a top-producing Realtor, and am extremely well-versed in guiding relocation buyers and investors. I've had tremendous success helping folks learn about the Portland area and which of our communities would be a perfect fit. Please feel free to reach out, I would love to be your go-to PDX resource!

CASCADE HASSON SOTHEBY'S INTERNATIONAL REALTY | 1500 NE IRVING STREET SUITE 110 | PORTLAND, OR 97232 | CASCADEHASSONSIR.COM

© 2023 Sotheby's International Realty. All Rights Reserved. Sotheby's International Realty® is a registered trademark and used with permission. Each Sotheby's International Realty office is independently owned and operated, except those operated by Sotheby's International Realty, Inc. The Sotheby's International Realty network fully supports the principles of the Fair Housing Act and the Equal Opportunity Act.





## Cascade Mountain Views on 0.71 Acres

This stunning Bend, Oregon home has been completely updated inside and out. Sitting on a spacious .71 acre lot with a flat driveway and flat usable backyard and patio, the setting provides beautiful Cascade Mountain Views. Newly remodeled kitchen, spacious great room, and private primary suite. Over-sized 3-car garage, radiant floor heating, central vac, and so much more! Don't miss this unique opportunity.

3240 NW Colonial Drive, Bend, OR 97701  
5 BD | 5 BA | \$2,695,000  
MLS# 220159152  
www.3240nwcolonialdr.com



**ELLIE ANDERSON**  
Broker  
541.788.8788  
ellie.anderson@cascadesir.com



**CALEB ANDERSON**  
Broker  
541.550.8337  
caleb.anderson@cascadesir.com

CASCADE HASSON SOTHEBY'S INTERNATIONAL REALTY | 650 SW BOND STREET, SUITE 100, BEND, OREGON 97702 | CASCADEHASSONSIR.COM

© 2023 Sotheby's International Realty. All Rights Reserved. Sotheby's International Realty® is a registered trademark and used with permission. Each Sotheby's International Realty office is independently owned and operated, except those operated by Sotheby's International Realty, Inc. The Sotheby's International Realty network fully supports the principles of the Fair Housing Act and the Equal Opportunity Act.





## New Construction on Private Lot

This sophisticated new construction home features open concept rooms, abundant natural light, vaulted ceilings, wide plank hardwoods and a 2-story gas fireplace. Sleek chef's kitchen, office, fitness or 5th bedroom, large bonus room with wet bar, patio and outdoor fireplace. Outdoor living with built-in BBQ, and more. Over-sized 3 car garage, yard, boat easement, and close to all Lake Oswego has to offer!

17930 Kelok Road, Lake Oswego, OR 97034  
5 BR | 3.2 BA | \$3,849,900  
MLS# 23086125  
[sothebysrealty.com/id/ZZER3Q](https://sothebysrealty.com/id/ZZER3Q)



**LAURA PICCARD**  
Broker  
503.200.9853  
[laura.piccard@cascadesir.com](mailto:laura.piccard@cascadesir.com)

CASCADE HASSON SOTHEBY'S INTERNATIONAL REALTY | 310 N. STATE STREET, LAKE OSWEGO, OREGON, 97034 | [CASCADEHASSONSIR.COM](https://CASCADEHASSONSIR.COM)

© 2023 Sotheby's International Realty. All Rights Reserved. Sotheby's International Realty® is a registered trademark and used with permission. Each Sotheby's International Realty office is independently owned and operated, except those operated by Sotheby's International Realty, Inc. The Sotheby's International Realty network fully supports the principles of the Fair Housing Act and the Equal Opportunity Act.





## 1 of 1 Woodburn Hill Gated Estate

Featuring a Modern French Chateau with sweeping Columbia River views, finished shop and ADU. Effortless living on 5.77 acres offering privacy and security with stunning sunsets, city and river views. Main home features opulent finishes inside and out, an exceptional primary bedroom and bath, custom home theater room, new roof, new gutters, new siding, new outdoor heaters and so much more.

2150 N 14th Street, Washougal, WA 98671  
5 BR | 6 BA | 8,344 SF | \$4,899,900  
MLS# 22105001  
www.woodburnhillestate.com

**TRAVIS HUNTER**  
Broker, Licensed in Washington  
360.607.7472  
travis.hunter@cascadehassonsir.com

CASCADE HASSON SOTHEBY'S INTERNATIONAL REALTY | 101 E 6TH STREET SUITE 230, VANCOUVER., WASHINGTON, 98660 | CASCADEHASSONSIR.COM

© 2023 Sotheby's International Realty. All Rights Reserved. Sotheby's International Realty® is a registered trademark and used with permission. Each Sotheby's International Realty office is independently owned and operated, except those operated by Sotheby's International Realty, Inc. The Sotheby's International Realty network fully supports the principles of the Fair Housing Act and the Equal Opportunity Act.

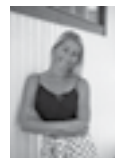




## 280 Dawnview Dr. Shelton, Wa

Time stands still on this private, gated acreage brimmed with sweeping saltwater and Mt Rainier views! Boasting 6,605 sq ft, this low maintenance Manor with 776 ft of waterfront + tidelands is packed with a variety of shellfish. Words fall short of this absolute architectural masterpiece.

\$6,500,000  
3 BR | 4 BA | 4.99 Acres  
[sothebysrealty.com/id/2024568](https://sothebysrealty.com/id/2024568)



COURTNEY DRENNON  
Broker  
360.790.0262  
[courtney.drennon@sothebysrealty.com](mailto:courtney.drennon@sothebysrealty.com)

MORRISON HOUSE/ SOTHEBY'S INTERNATIONAL REALTY | 2622 N. PROCTOR ST TACOMA, WA 98407 | [SOTHEBYSREALTY.COM](https://SOTHEBYSREALTY.COM)

© 2023 Sotheby's International Realty. All Rights Reserved. Sotheby's International Realty® is a registered trademark and used with permission. Each Sotheby's International Realty office is independently owned and operated, except those operated by Sotheby's International Realty, Inc. The Sotheby's International Realty network fully supports the principles of the Fair Housing Act and the Equal Opportunity Act.





## Acreage on the Big Island of Hawaii

Build your Hawaiian Dream on this spectacular property with commanding views of Maui. The 141 acres are perched above the historical town of Kapaau with view corridors on this magnificent property that allow for dramatic sunrise and sunset views. A great opportunity to create your private retreat, ranch, or farm. Already installed is a water system, incredible barn, and farm manager's cottage.

54-2324 Kynnersley Road  
3 BR | 2.0 BA | \$4,495,000  
[sothebysrealty.com/id/SB8MEB](https://sothebysrealty.com/id/SB8MEB)



**DOREEN TRUDEAU**  
RS-75801  
808.264.4026  
[dtrudeau@venturesir.com](mailto:dtrudeau@venturesir.com)



**BRIAN AXELROD**  
RS-77132  
808.443.7767  
[baxelrod@venturesir.com](mailto:baxelrod@venturesir.com)

VENTURE SOTHEBY'S INTERNATIONAL REALTY | 62-100 MAUNA KEA BEACH DRIVE KAMUELA, HAWAII 96743 | [DOREENTRUDEAULUXURYHAWAII.COM](https://DOREENTRUDEAULUXURYHAWAII.COM)

© 2023 Sotheby's International Realty. All Rights Reserved. Sotheby's International Realty® is a registered trademark and used with permission. Each Sotheby's International Realty office is independently owned and operated, except those operated by Sotheby's International Realty, Inc. The Sotheby's International Realty network fully supports the principles of the Fair Housing Act and the Equal Opportunity Act.





## Breathtaking Kauai Vista

The true essence of tropical living on Kauai, above picturesque Anini Beach, lies Anini Vista. On three acres, this avant-garde architectural creation fuses the unorthodox use of materials with an edgy design to beckon fans of modernism and will appeal to those who appreciate the unusual and noteworthy. Kilauea town and everything it offers is just a few minutes drive from this breathtaking home.

4221 Anini Vista Drive  
4 BR | 4.5 BA | \$11,900,000  
[sothebysrealty.com/id/2S2ESD](https://sothebysrealty.com/id/2S2ESD)



**DOREEN TRUDEAU**  
RS-75801  
808.264.4026  
[dtrudeau@venturesir.com](mailto:dtrudeau@venturesir.com)



**BRIAN AXELROD**  
RS-77132  
808.443.7767  
[baxelrod@venturesir.com](mailto:baxelrod@venturesir.com)

VENTURE SOTHEBY'S INTERNATIONAL REALTY | 62-100 MAUNA KEA BEACH DRIVE KAMUELA, HAWAII 96743 | [DOREENTRUDEAULUXURYHAWAII.COM](https://DOREENTRUDEAULUXURYHAWAII.COM)

© 2023 Sotheby's International Realty. All Rights Reserved. Sotheby's International Realty® is a registered trademark and used with permission. Each Sotheby's International Realty office is independently owned and operated, except those operated by Sotheby's International Realty, Inc. The Sotheby's International Realty network fully supports the principles of the Fair Housing Act and the Equal Opportunity Act.





## Bay View Estates, Big Island of Hawaii

Located in prestigious Bayview Estates in Keauhou, this home offers the pinnacle in Hawaii resort living, while still being close to shopping, movies, restaurants, golf, and water activities. This home features fully pocketing doors opening to the back lanai, large chef's kitchen, and a great swimming pool with attached spa and water feature.

78-7010 Mololani Street  
3 BR | 3.5 BA | \$2,790,000  
[sothebysrealty.com/id/5MQCKP](https://www.sothebysrealty.com/id/5MQCKP)



**BRIAN AXELROD**  
RS-77132  
808.443.7767  
[baxelrod@venturesir.com](mailto:baxelrod@venturesir.com)

VENTURE SOTHEBY'S INTERNATIONAL REALTY | 78-6831 ALII DRIVE, SUITE 163 KAILUA KONA, HAWAII 96740 | [VENTURESIR.COM](https://www.venturesir.com)

© 2023 Sotheby's International Realty. All Rights Reserved. Sotheby's International Realty® is a registered trademark and used with permission. Each Sotheby's International Realty office is independently owned and operated, except those operated by Sotheby's International Realty, Inc. The Sotheby's International Realty network fully supports the principles of the Fair Housing Act and the Equal Opportunity Act.





## Anini Vista Kauai, Hawaii

Anini Vista is a private enclave located on the coveted North Shore of Kauai, where refinement and forever views are the common denominator. This gated estate, with its picturesque bluff location, embraces the concept of a home without walls. Nearby adventures await; surf, sail or paddleboard in iconic Hanalai Bay, hike the Napali Coast, or do simply nothing but luxuriate in the solitude of this home.

4277-C Anini Vista Drive  
4 BR | 4.5 BA | \$13,500,000  
[sothebysrealty.com/id/SBTYRP](https://sothebysrealty.com/id/SBTYRP)



**DOREEN TRUDEAU**  
RS-75801  
808.264.4026  
[dtrudeau@venturesir.com](mailto:dtrudeau@venturesir.com)



**BRIAN AXELROD**  
RS-77132  
808.443.7767  
[baxelrod@venturesir.com](mailto:baxelrod@venturesir.com)

VENTURE SOTHEBY'S INTERNATIONAL REALTY | 62-100 MAUNA KEA BEACH DRIVE KAMUELA, HAWAII 96743 | [DOREENTRUDEAULUXURYHAWAII.COM](https://DOREENTRUDEAULUXURYHAWAII.COM)

© 2023 Sotheby's International Realty. All Rights Reserved. Sotheby's International Realty® is a registered trademark and used with permission. Each Sotheby's International Realty office is independently owned and operated, except those operated by Sotheby's International Realty, Inc. The Sotheby's International Realty network fully supports the principles of the Fair Housing Act and the Equal Opportunity Act.





## Keauhou Estates Resort Home

Enjoy the expansive ocean, sunset, and Kailua-Kona views from this well-appointed Big Island of Hawaii resort home. On a double lot there is plenty of room for the large swimming pool and full-size tennis court. Located within Keauhou Estates, a private gated community, you are close to dining, shopping, golf, snorkeling, surfing beaches, farmer's market, and so much more!

78-6855 Kuhinanui Street  
5 BR | 5.5 BA | \$3,450,000  
[sothebysrealty.com/id/LVB5YJ](https://www.sothebysrealty.com/id/LVB5YJ)



**BRIAN AXELROD**  
RS-77132  
808.443.7767  
[baxelrod@venturesir.com](mailto:baxelrod@venturesir.com)

VENTURE SOTHEBY'S INTERNATIONAL REALTY | 78-6831 ALII DRIVE, SUITE 163 KAILUA KONA, HAWAII 96740 | [VENTURESIR.COM](https://www.venturesir.com)

© 2023 Sotheby's International Realty. All Rights Reserved. Sotheby's International Realty® is a registered trademark and used with permission. Each Sotheby's International Realty office is independently owned and operated, except those operated by Sotheby's International Realty, Inc. The Sotheby's International Realty network fully supports the principles of the Fair Housing Act and the Equal Opportunity Act.



SALT LAKE CITY, UTAH



2291 S Berkeley Street

7 BR | 7 BA | 9,514 SF | \$4,925,000 sothebysrealty.com/id/TW789Z

Situated in the heart of the Salt Lake Country Club neighborhood, this home was recently constructed with painstaking attention to every last detail.

POINT CAMERA  
FOR VIDEO



PARK CITY, UTAH



379 E Valley Drive

4 BR | 5 BA | 5,766 SF | \$3,250,000 sothebysrealty.com/id/HCG9RL

This impressive model home was featured in the Showcase of Homes. Enjoy incredible views of Park City Mountain Resort and Deer Valley®.

POINT CAMERA  
FOR VIDEO



**Adam Kirkham**  
Sales Associate  
801.450.1800  
adam.kirkham@sothebysrealty.com

SUMMIT SOTHEBY'S INTERNATIONAL REALTY | 1260 E STRINGHAM AVENUE SUITE 100, SALT LAKE CITY, UTAH 84106 | SUMMITSOTHEBYSREALTY.COM

© 2023 Sotheby's International Realty. All Rights Reserved. Sotheby's International Realty® is a registered trademark and used with permission. Each Sotheby's International Realty office is independently owned and operated, except those operated by Sotheby's International Realty, Inc. The Sotheby's International Realty network fully supports the principles of the Fair Housing Act and the Equal Opportunity Act.





## Whitefish Ski Resort

Northwest Montana's Premier 5-star ski in/ski out gorgeously appointed mountain modern, full service and amenity rich boutique ski resort less than 30 feet from Chair 2. Oversized suites featuring stunning views of the slopes and down valley. Gracious living, dining and kitchen areas for the ultimate in entertaining. Enjoy the alpine glow sunsets from your private hot tub! Owner's amenities include a pub, ski lounge, Apres ski beach, movement studio, private storage and more!

3900 Big Mountain Road  
1-5 BR | 2-6 BA | \$1.6 M - \$15 M  
[www.WhitefishMontanaProperties.com](http://www.WhitefishMontanaProperties.com)



**DEBBIE MAUE**, gri, cips, abr  
Broker  
406-219-7683  
[dmaue@glaciersir.com](mailto:dmaue@glaciersir.com)

POINT CAMERA  
FOR MORE



GLACIER SOTHEBY'S INTERNATIONAL REALTY | 204 CENTRAL AVENUE WHITEFISH, MT 59937 | [SOTHEBYSREALTY.COM](http://SOTHEBYSREALTY.COM)

© 2023 Sotheby's International Realty. All Rights Reserved. Sotheby's International Realty® is a registered trademark and used with permission. Each Sotheby's International Realty office is independently owned and operated, except those operated by Sotheby's International Realty, Inc. The Sotheby's International Realty network fully supports the principles of the Fair Housing Act and the Equal Opportunity Act.



**BOZEMAN, MONTANA**



**26 River Camp Road**

**4 BR | 4.5 BA | 4,168 SQFT | \$4,199,900**

[sothebysrealty.com/id/KL85BW](https://sothebysrealty.com/id/KL85BW)

**CHARLOTTE DURHAM** | Broker  
406.581.8891 | [c@charlottenco.com](mailto:c@charlottenco.com)

**GALLATIN GATEWAY, MONTANA**



**50467 Gallatin Road**

**RIVERFRONT LOT | 4.3 ACRES | \$1,050,000**

[sothebysrealty.com/id/45SN3X](https://sothebysrealty.com/id/45SN3X)

**ERIC BECKER** | Sales Associate  
406.539.6291 | [eric@bigskysir.com](mailto:eric@bigskysir.com)

**BOZEMAN, MONTANA**



**2500 Whitetail Road**

**7 BR | 6.5 BA | 8,117 SQFT | \$3,499,000**

[sothebysrealty.com/id/EZHY5G](https://sothebysrealty.com/id/EZHY5G)

**CHARLOTTE DURHAM** | Broker  
406.581.8891 | [c@charlottenco.com](mailto:c@charlottenco.com)

**BOZEMAN, MONTANA**



**6 E Beall Street**

**4 BR | 4.0 BA | 4,199 SQFT | \$2,150,000**

[sothebysrealty.com/id/GQBMZY](https://sothebysrealty.com/id/GQBMZY)

**STEPHANIE HYER & ANNE KREDER** | Sales Associates  
406.312.0998 | [stephanie@bigskysir.com](mailto:stephanie@bigskysir.com)

**BIG SKY, MONTANA**



**48 Big Sky Resort**

**SLOPE SIDE STUDIO | 463 SQFT | \$499,000**

[sothebysrealty.com/id/7BTWD6](https://sothebysrealty.com/id/7BTWD6)

**BEN COLEMAN** | Broker  
406.581.4565 | [ben@bigskysir.com](mailto:ben@bigskysir.com)

**BIG SKY, MONTANA**



**2B Summit View, Unit 502B**

**4 BR | 4.0 BA | 2,419 SQFT | \$2,700,000**

[sothebysrealty.com/id/5FW7FM](https://sothebysrealty.com/id/5FW7FM)

**WILL BRUNNER** | Broker  
406.209.1225 | [will@bigskysir.com](mailto:will@bigskysir.com)

BIG SKY SOTHEBY'S INTERNATIONAL REALTY | 33 LONE PEAK DRIVE UNIT 105, BIG SKY, MT 59716 | 424 E MAIN STREET SUITE 1, BOZEMAN, MT 59715 | [BIGSKYSIR.COM](http://BIGSKYSIR.COM)

© 2023 Sotheby's International Realty. All Rights Reserved. Sotheby's International Realty® is a registered trademark and used with permission. Each Sotheby's International Realty office is independently owned and operated, except those operated by Sotheby's International Realty, Inc. The Sotheby's International Realty network fully supports the principles of the Fair Housing Act and the Equal Opportunity Act.





## Let me be the key to your next house in Santa Fe.

30 Years of Experience with Sotheby's International Realty.

"I have bought and sold 7 properties and worked with 13 different realtors before working with Ashley Margetson. Without question she was the best I have worked with. I highly recommend her to any potential buyer or seller."

– Brian Schroeder

**ASHLEY MARGETSON, CRS, GRI, CNE, SFS**

Senior Associate Broker

505.920.2300

ashley.margetson@sothebys.realty

### SANTA FE, NEW MEXICO



### Hacienda Corta Caro – Mexican-Inspired Adobe Hacienda

**3 BR | 4.5 BA | 2.5 ACRES | \$3,750,000**

[sothebysrealty.com/id/HY3Q9E](https://sothebysrealty.com/id/HY3Q9E)

SOTHEBY'S INTERNATIONAL REALTY – SANTA FE | 231 WASHINGTON AVENUE | SANTA FE, NEW MEXICO 87501 | 505.988.8088 | [SOTHEBYSREALTY.COM](https://SOTHEBYSREALTY.COM)

© 2023 Sotheby's International Realty. All Rights Reserved. Sotheby's International Realty® is a registered trademark and used with permission. Each Sotheby's International Realty office is independently owned and operated, except those operated by Sotheby's International Realty, Inc. The Sotheby's International Realty network fully supports the principles of the Fair Housing Act and the Equal Opportunity Act.





## 2445 Pine Valley Court

Masterfully designed by Jennifer Hamelet of Mirador Builders. This five bedroom, six full and four half bath European style estate provides for a transcendent mode of living with exquisite interior/exterior spaces enhanced by beautiful views of bucolic gardens, a pool/spa and pavilion that creates the epitome of modernized "Old World" charm while having incredible convenience and scale throughout.

2445 Pine Valley Court  
5 BR | 8.0 BA | \$12,900,000  
[sothebysrealty.com/id/4K2GJ5](https://sothebysrealty.com/id/4K2GJ5)



**PATRICIA REED**  
Sales Associate  
713.253.9024  
[patricia.reed@sothebysrealty.com](mailto:patricia.reed@sothebysrealty.com)

MARTHA TURNER SOTHEBY'S INTERNATIONAL REALTY - CENTRAL HOUSTON BROKERAGE | 1717 WEST LOOP SOUTH STE 1700 HOUSTON, TEXAS 77027 | [SOTHEBYSREALTY.COM](https://SOTHEBYSREALTY.COM)

© 2023 Sotheby's International Realty. All Rights Reserved. Sotheby's International Realty® is a registered trademark and used with permission. Each Sotheby's International Realty office is independently owned and operated, except those operated by Sotheby's International Realty, Inc. The Sotheby's International Realty network fully supports the principles of the Fair Housing Act and the Equal Opportunity Act.





## Selling Vero Beach...The Hamptons of Florida

Enjoy award winning golf courses, equestrian centers and boating opportunities of every kind, which are matched only by the quality of Vero's galleries, museums, theaters, and restaurants. The quality of life for families in Vero is exceptional in every way.

### THE O'DARE BOGA DOBSON GROUP

Global Real Estate Advisors  
Cindy O'Dare | 772.713.5899  
Richard Boga | 772.559.4800

#### VERO BEACH, FLORIDA



### 2150 South A1A

8 BR | 12 BA | \$60,000,000

2150southa1a.com

#### VERO BEACH, FLORIDA



### 100 Seaway Court

6 BR | 8 BA | \$29,500,000

100seawaycourt.com

#### VERO BEACH, FLORIDA



### 385 Riverway Court

5 BR | 7 BA | \$6,900,000

odareboga.com

ONE SOTHEBY'S INTERNATIONAL REALTY | 1401 HIGHWAY A1A, VERO BEACH, FLORIDA 32963 | SOTHEBYSREALTY.COM





## Thinking Palm Beach? The Cregan Team

As a real estate team, Lisa and John Cregan comprise a perfectly complementary set of skills- Lisa's deep knowledge of architecture and interior design combined with John's decades of experience in market analysis, finance and negotiation. Ranked #1 at Sotheby's Palm Beach.

### LISA AND JOHN CREGAN

Senior Global Real Estate Advisors  
561.513.6358 | [TheCreganTeam.com](http://TheCreganTeam.com)  
[john.cregan@sothebys.realty](mailto:john.cregan@sothebys.realty)

#### PALM BEACH, FLORIDA



153 Kings Road

5 BR | 7.5 BA | \$18,950,000

[153KingsRoad.com](http://153KingsRoad.com)

#### PALM BEACH, FLORIDA



255 El Pueblo Way

4 BR | 4.0 BA | \$14,900,000

[sothebysrealty.com/id/YK5HNG](http://sothebysrealty.com/id/YK5HNG)

#### WEST PALM BEACH, FLORIDA



2305 S Flagler Drive

4 BR | 5.0 BA | \$24,900,000

[EICidWaterfront.com](http://EICidWaterfront.com)

PALM BEACH BROKERAGE | [SOTHEBYSREALTY.COM/PALMBEACH](http://SOTHEBYSREALTY.COM/PALMBEACH)



**PALM BEACH, FLORIDA**



**224 Atlantic Avenue**

**\$15,900,000**

[sothebysrealty.com/id/RD5VFJ](https://sothebysrealty.com/id/RD5VFJ)

**NORTH PALM BEACH, FLORIDA**



**Seminole Landing with Dock**

**\$15,295,000**

[12358ridge.com](https://12358ridge.com)

**PALM BEACH, FLORIDA**



**North End West Indies**

**\$13,500,000**

[308arabian.com](https://308arabian.com)

**PALM BEACH, FLORIDA**



**Renovated North End**

**\$11,995,000**

[1435northocean.com](https://1435northocean.com)

**PALM BEACH, FLORIDA**



**North End Five Bedroom**

**\$8,900,000**

[270coloniallane.com](https://270coloniallane.com)

**NORTH PALM BEACH, FLORIDA**



**Harbour Isles Waterfront with Dock**

**\$4,290,000**

[841harbourisles.com](https://841harbourisles.com)

**PALM BEACH, FLORIDA**



**The Australian - Garden Apartment**

**\$3,395,000**

[429Australian3.com](https://429Australian3.com)

**WEST PALM BEACH, FLORIDA**



**Renovated Northwood Pool Home**

**\$2,995,000**

[419-26street.com](https://419-26street.com)

**WEST PALM BEACH, FLORIDA**



**Newly Renovated Waterfront**

**\$1,495,000**

[1200SFlagler901.com](https://1200SFlagler901.com)



**TODD & FRANCES PETER**

Senior Global Real Estate Advisors

561.281.0031 | [francesandtodd.com](https://francesandtodd.com)

[todd.peter@sothebys.realty](mailto:todd.peter@sothebys.realty)

PALM BEACH BROKERAGE | [SOTHEBYSREALTY.COM/PALMBEACH](https://sothebysrealty.com/palmbeach)





## 302 Via Linda

A beautifully renovated Henry Harding Regency style home on a coveted high elevation street. The residence provides a welcoming entrance hall, leading to a high ceiling living room featuring a fireplace, a sun lit family room and four ensuite bedrooms.

302 Via Linda  
4 BR | 5.0 BA | \$19,995,000  
302ViaLinda.com



**CRISTINA CONDON**  
Senior Global Real Estate Advisor  
561.301.2211 | [cristinacondon.com](mailto:cristinacondon.com)  
[cristina.condon@sothebys.realty](mailto:cristina.condon@sothebys.realty)



**KEVIN CONDON**  
Senior Global Real Estate Advisor  
646.457.8919  
[kevin.condon@sothebys.realty](mailto:kevin.condon@sothebys.realty)

PALM BEACH BROKERAGE | [SOTHEBYSREALTY.COM/PALMBEACH](https://www.sothebysrealty.com/palmbeach)

© 2023 Sotheby's International Realty. All Rights Reserved. Sotheby's International Realty® is a registered trademark and used with permission. Each Sotheby's International Realty office is independently owned and operated, except those operated by Sotheby's International Realty, Inc. The Sotheby's International Realty network fully supports the principles of the Fair Housing Act and the Equal Opportunity Act.



PALM BEACH GARDENS, FLORIDA



Exquisite Contemporary

7 BR | 3.5 BA | \$17,995,000

[oldpalmcontemporary.com](http://oldpalmcontemporary.com)

PALM BEACH, FLORIDA



127 Peruvian Avenue 204

2 BR | 2.0 BA | \$2,995,000

[127peruvian.com](http://127peruvian.com)

PALM BEACH, FLORIDA



2150 Ibis Isle Road PH 4

2 BR | 2.0 BA | \$1,995,000

[ibisisleph4.com](http://ibisisleph4.com)



**JB EDWARDS**

Global Real Estate Advisor

561.370.4141 | [jbedwardssirpb.com](mailto:jbedwardssirpb.com)

[james.edwards@sothebys.realty](mailto:james.edwards@sothebys.realty)

PALM BEACH BROKERAGE | [SOTHEBYSREALTY.COM/PALMBEACH](http://SOTHEBYSREALTY.COM/PALMBEACH)





## Concession Estate

Exceptional custom estate with private casita situated on over three quarters of an acre in Concession, the premier gated golf community.

19460 Ganton Avenue  
4 BR | 5.0 BA | \$2,975,000  
[sothebysrealty.com/id/BZJQCH](https://sothebysrealty.com/id/BZJQCH)



**LAURA STAVOLA**  
Sales Associate  
941.447.4875  
[laura.stavola@sothebysrealty.com](mailto:laura.stavola@sothebysrealty.com)

PREMIER SOTHEBY'S INTERNATIONAL REALTY | 8141 LAKEWOOD MAIN STREET, SUITE 101 LAKEWOOD RANCH, FLORIDA 34202 | [SOTHEBYSREALTY.COM](https://SOTHEBYSREALTY.COM)

© 2023 Sotheby's International Realty. All Rights Reserved. Sotheby's International Realty® is a registered trademark and used with permission. Each Sotheby's International Realty office is independently owned and operated, except those operated by Sotheby's International Realty, Inc. The Sotheby's International Realty network fully supports the principles of the Fair Housing Act and the Equal Opportunity Act.





## Your Trusted Maine Real Estate Advisor

Outstanding craftsmanship and a uniquely curated 'To be built' homes. Innovative Mottram Architecture and The Nesting Ground offer sustainable living with creative artisanal finishes sited on dreamy private sanctuary lots, as featured on the Magnolia Network. SolarHillMaine.com.

### MICHELE PEREJDA

Senior Vice President | Broker  
207.400.6227  
mperejda@legacysir.com

#### SCARBOROUGH, MAINE



### 5 Solar Hill Way

4 BR | 4 BA | \$2,200,000

[legacysir.com/id/1552236](https://legacysir.com/id/1552236)

#### SCARBOROUGH, MAINE



### 1 Solar Hill Way

3 BR | 4 BA | \$1,750,000

[legacysir.com/id/1552211](https://legacysir.com/id/1552211)

LEGACY PROPERTIES SOTHEBY'S INTERNATIONAL REALTY | TWO CITY CENTER PORTLAND, MAINE 04101 | [LEGACYSIR.COM](https://LEGACYSIR.COM)

© 2023 Sotheby's International Realty. All Rights Reserved. Sotheby's International Realty® is a registered trademark and used with permission. Each Sotheby's International Realty office is independently owned and operated, except those operated by Sotheby's International Realty, Inc. The Sotheby's International Realty network fully supports the principles of the Fair Housing Act and the Equal Opportunity Act.





## Dramatic Central Park Views

Magnificent Central Park views from this massive, elegant, and rare 14-room apartment with 55' frontage on Central Park and centered high above the Conservatory Pond. This full-floor Fifth Avenue residence with exceptionally large rooms, has 4 exposures, offers 5,740 sq. ft., 6 bedrooms, 5 baths, 10' 6" ceilings, 4 fireplaces, herringbone floors, original moldings, dazzling light. Gold Coast location.

927 Fifth Avenue, 9th Floor  
927FifthAvenue.com  
New Price: \$29,800,000



**LOUISE C. BEIT**  
Senior Global Real Estate Advisor, Associate Broker  
917.544.5515 | Louisebeit.com  
Louise.Beit@sothebys.realty

SOTHEBY'S INTERNATIONAL REALTY - EAST SIDE MANHATTAN BROKERAGE | 650 MADISON AVENUE NEW YORK, NEW YORK 10022 | SOTHEBYSREALTY.COM/NYC

© 2023 Sotheby's International Realty. All Rights Reserved. Sotheby's International Realty® is a registered trademark and used with permission. Each Sotheby's International Realty office is independently owned and operated, except those operated by Sotheby's International Realty, Inc. The Sotheby's International Realty network fully supports the principles of the Fair Housing Act and the Equal Opportunity Act.



LUQUILLO, PUERTO RICO



Hacienda Les Chevaux

4 BR | 4 BA/3 HBA | \$6,100,000 [sothebysrealty.com/id/QN78HL](https://sothebysrealty.com/id/QN78HL)

Impressively positioned within the mountains of Luquillo in the heart of the El Yunque Rainforest, this modern architectural marvel showcases ocean and mountain views.

CULEBRA, PUERTO RICO



Playa Sardinias

16 BR | 10 BA/2 HBA | \$6,900,000 [sothebysrealty.com/id/E2NYZG](https://sothebysrealty.com/id/E2NYZG)

A remarkable and rare opportunity on the Island of Culebra, this jewel was meticulously built around a lifestyle of comfort and convenience.



**MARGARET PENA JUVELIER**

President | Founder

787.523.6502

[margaret.juvelier@sothebysrealty.pr](mailto:margaret.juvelier@sothebysrealty.pr)



**MONICA ALVAREZ**

Associate Broker

787.523.6508

[monica.alvarez@sothebysrealty.pr](mailto:monica.alvarez@sothebysrealty.pr)

PUERTO RICO SOTHEBY'S INTERNATIONAL REALTY | 1052 ASHFORD AVE., SAN JUAN, PUERTO RICO 00907 | [PUERTORICOSOTHEBYSREALTY.COM](https://puertoricosothebysrealty.com)

© 2023 Sotheby's International Realty. All Rights Reserved. Sotheby's International Realty® is a registered trademark and used with permission. Each Sotheby's International Realty office is independently owned and operated, except those operated by Sotheby's International Realty, Inc. The Sotheby's International Realty network fully supports the principles of the Fair Housing Act and the Equal Opportunity Act.



**DORADO BEACH, PUERTO RICO**



**31 Dorado Country Estates**  
4 BR | 6.5 BA | \$14,500,000  
[sothebysrealty.com/id/39SNQN](https://sothebysrealty.com/id/39SNQN)

**CONDADO BEACH, PUERTO RICO**



**1315 Ashford Ave., SPH 1201**  
5 BR | 5.5 BA | \$8,750,000  
[sothebysrealty.com/id/PGE7JX](https://sothebysrealty.com/id/PGE7JX)

**PALMAS DEL MAR, PUERTO RICO**



**238 Candeleró Dr.**  
3 BR | 2.5 BA | \$2,495,000  
[sothebysrealty.com/id/VHJQKM](https://sothebysrealty.com/id/VHJQKM)

**FAJARDO, PUERTO RICO**



**Las Casitas I 5071-5073**  
3 BR | 3 BA | \$1,825,000  
[sothebysrealty.com/id/B5G5MB](https://sothebysrealty.com/id/B5G5MB)

**OLD SAN JUAN, PUERTO RICO**



**406 Luna St.**  
7 BR | 7.5 BA | \$3,800,000  
[sothebysrealty.com/id/NQFYL2](https://sothebysrealty.com/id/NQFYL2)

**VIEQUES, PUERTO RICO**



**Villa 8**  
3 BR | 3 BA/2 HBA | \$7,000,000  
[sothebysrealty.com/sales/pri](https://sothebysrealty.com/sales/pri)



**ORIANA JUVELIER**  
Vice President  
787.523.6503  
[oriana.juvelier@sothebysrealty.pr](mailto:oriana.juvelier@sothebysrealty.pr)



**JOAN LOPEZ**  
Executive Assistant to VP  
787.523.6510 ext. 102  
[joan.lopez@sothebysrealty.pr](mailto:joan.lopez@sothebysrealty.pr)

PUERTO RICO SOTHEBY'S INTERNATIONAL REALTY | 1052 ASHFORD AVE., SAN JUAN, PUERTO RICO 00907 | [PUERTORICOSOTHEBYSREALTY.COM](https://puertoricosothebysrealty.com)

© 2023 Sotheby's International Realty. All Rights Reserved. Sotheby's International Realty® is a registered trademark and used with permission. Each Sotheby's International Realty office is independently owned and operated, except those operated by Sotheby's International Realty, Inc. The Sotheby's International Realty network fully supports the principles of the Fair Housing Act and the Equal Opportunity Act.





## Beachfront Lots for Sale

San Antonio is a secluded 800-acre, two-mile long by half-mile wide, Atlantic oceanfront community in Uruguay. Lots vary in price from \$5/square foot to \$38/square foot. San Antonio features numerous beautifully designed homes of high-quality construction nestled into a spectacular natural setting. The wide, virgin, white-sandy beach is eminently suitable for swimming.

San Antonio, Rocha, Uruguay  
sanantoniosur.com | \$5 ~ \$38 / sq ft



**ALEJANDRO PERAZZO**  
Director  
+598 9644 8605  
ale@uruguaysothebysrealty.com

URUGUAY SOTHEBY'S INTERNATIONAL REALTY | RUTA 10 KM 160 LA BARRA, MALDONADO 20001 | URUGUAYSOTHEBYSREALTY.COM

© 2023 Sotheby's International Realty. All Rights Reserved. Sotheby's International Realty® is a registered trademark and used with permission. Each Sotheby's International Realty office is independently owned and operated, except those operated by Sotheby's International Realty, Inc. The Sotheby's International Realty network fully supports the principles of the Fair Housing Act and the Equal Opportunity Act.





## Velvære

Experience a state of well-being where nature and surroundings are intrinsically linked to being whole. This 60-acre community will feature direct ski-in, ski-out access and year-round mountain adventure through an onsite ski-lift, extensive ski terrain, discovery-focused outdoor spaces, an integrative wellness center, and family adventure center all woven around 115 private residences.

115 Private Cabins, Residences and  
Estate Homes in Park City, Utah  
Pricing Starting at \$4,500,000  
velvaereparkcity.com

**KERI HOLLAND AND LIZA STORY**  
Sales Associates  
435.602.6570  
info@velvaereparkcity.com

SUMMIT SOTHEBY'S INTERNATIONAL REALTY | 1750 PARK AVENUE PO BOX 2370, PARK CITY, UTAH 84060 | SUMMITSOTHEBYSREALTY.COM

© 2023 Sotheby's International Realty. All Rights Reserved. Sotheby's International Realty® is a registered trademark and used with permission. Each Sotheby's International Realty office is independently owned and operated, except those operated by Sotheby's International Realty, Inc. The Sotheby's International Realty network fully supports the principles of the Fair Housing Act and the Equal Opportunity Act.



MIAMI BEACH, FLORIDA



Monad Terrace #2F by Jean Nouvel

3 BR | 3.5 BA | \$7,495,000 MONADTERRACE-2F.COM

With a jaw-dropping 3,200 SF terrace and Biscayne Bay and Miami skyline views, this 3-bedroom, 3.5-bathroom Miami Beach home is made for those seeking the exceptional.

MIAMI BEACH, FLORIDA



Icon South of Fifth #1801/1803

5 BR | 4 BA | \$8,495,000 THEICON1801-03.COM

Custom double-residence with over 5,400 SF of indoor/outdoor living and incredible panoramas from the premium southwest corner of Icon.



**J. "EDDY" MARTINEZ**

Global Real Estate Advisor

786.286.4344

EMartinez@onesothebysrealty.com



**ROLAND ORTIZ**

Global Real Estate Advisor

786.253.3949

ROrtiz@onesothebysrealty.com

ONE SOTHEBY'S INTERNATIONAL REALTY | 119 WASHINGTON AVE, SUITE 102 MIAMI BEACH, FLORIDA 33139 | WORLDWIDEPROPERTIES.COM

© 2023 Sotheby's International Realty. All Rights Reserved. Sotheby's International Realty® is a registered trademark and used with permission. Each Sotheby's International Realty office is independently owned and operated, except those operated by Sotheby's International Realty, Inc. The Sotheby's International Realty network fully supports the principles of the Fair Housing Act and the Equal Opportunity Act.