

Nothing compares
to what's next

AUGUST 2023 | SOTHEBYSREALTY.COM



Healdsburg, California

REPRESENTED BY MICHAEL DREYFUS AND CAROLE SAUERS ON PG 20

Sotheby's
INTERNATIONAL REALTY

9430 Cresta Drive



9430 Cresta Drive

6 BR | 10 BA | 11,706 SQ FT.

\$15,000,000

An iconic home steeped in timeless style and sophisticated design, 9430 Cresta Drive is one of just three highly desirable double-lot estates in prime Beverlywood. Encompassing six bedrooms and ten baths across three levels, this palatial 11,706-square-foot home presents a masterful selection of modern amenities and elegant living spaces, all perfect for elevated hosting and refined everyday living.

THEBEVERLYWOODESTATE.COM

Marc Noah

DRE#: 01269495

310.968.9212

marc@marcnoah.com



Sotheby's
INTERNATIONAL REALTY

SOTHEBY'S INTERNATIONAL REALTY - BEVERLY HILLS BROKERAGE | 9665 WILSHIRE BLVD STE 400 BEVERLY HILLS, CALIFORNIA 90212 | SOTHEBYSREALTY.COM

© 2023 Sotheby's International Realty. All Rights Reserved. Sotheby's International Realty® is a registered trademark and used with permission. Each Sotheby's International Realty office is independently owned and operated, except those operated by Sotheby's International Realty, Inc. The Sotheby's International Realty network fully supports the principles of the Fair Housing Act and the Equal Opportunity Act.



Table of Contents

4	CALIFORNIA
22	WASHINGTON
25	OREGON
29	NEVADA
31	UTAH
36	WYOMING
37	TEXAS
40	TENNESSEE
41	FLORIDA
44	THE BAHAMAS



Neyshia Go & The Go Group

In 2022, Neyshia Go & The Go Group soared to new heights, claiming the title of the #1 Real Estate Team in Southern California at Sotheby's International Realty. With a staggering \$263,726,048 in total sales last year, they epitomize luxury real estate expertise in the region.

NEYSHIA GO

Senior Global Real Estate Advisor

310.882.8357

Neyshia@NeyshiaGo.com

NeyshiaGo.com

PACIFIC PALISADES, CALIFORNIA



1172 Lachman Lane

4 BR | 3.5 BA | 3,203 SQ.FT | \$5,649,000

sothebysrealty.com/id/F52YPT

LOS ANGELES, CALIFORNIA



812 North Stanley Avenue

5 BR | 6.0 BA | 5,216 SQ.FT | \$4,850,000

sothebysrealty.com/id/KVXLF2

LOS ANGELES, CALIFORNIA



5280 Los Bonitos Way

5 BR | 5.5 BA | 4,453 SQ.FT | \$3,489,000

sothebysrealty.com/id/K83QMG

SOTHEBY'S INTERNATIONAL REALTY - BEVERLY HILLS BROKERAGE | 9665 WILSHIRE BLVD STE 400 BEVERLY HILLS, CALIFORNIA 90212 | SOTHEBYSREALTY.COM

© 2023 Sotheby's International Realty. All Rights Reserved. Sotheby's International Realty® is a registered trademark and used with permission. Each Sotheby's International Realty office is independently owned and operated, except those operated by Sotheby's International Realty, Inc. This material is based upon information which we consider reliable but because it has been supplied by third parties, we cannot represent that it is accurate or complete and it should not be relied upon as such. Equal Housing Opportunity. *Source: Sotheby's International Realty Q1 and Q2 2023 company stats.

SAINT HELENA, CALIFORNIA



2900 Spring Mountain Road

7 BR | 6.5 BA | 12,000 SQ.FT | \$16,500,000

JuslynNapaValley.com

SAINT HELENA, CALIFORNIA



2910 Spring Mountain Road

29.78 ACRES | \$16,500,000

JuslynNapaValley.com

CALABASAS, CALIFORNIA



26773 Mulholland Highway

6 BR | 8 BA | 8,305 SQ.FT | \$9,499,000

sothebysrealty.com/id/C5MTRY

BEL AIR, CALIFORNIA



1601 Lindamere Place

5 BR | 4.5 BA | 4,975 SQ.FT | \$5,999,999

sothebysrealty.com/id/BHNSPK



NEYSHIA GO

Senior Global Real Estate Advisor

310.882.8357

Neyshia@NeyshiaGo.com

NeyshiaGo.com

SOTHEBY'S INTERNATIONAL REALTY - BEVERLY HILLS BROKERAGE | 9665 WILSHIRE BLVD STE 400 BEVERLY HILLS, CALIFORNIA 90212 | SOTHEBYSREALTY.COM

© 2023 Sotheby's International Realty. All Rights Reserved. Sotheby's International Realty® is a registered trademark and used with permission. Each Sotheby's International Realty office is independently owned and operated, except those operated by Sotheby's International Realty, Inc. The Sotheby's International Realty network fully supports the principles of the Fair Housing Act and the Equal Opportunity Act.



Ranked #1 in Beverly Hills

Meet Lori Hashman Berris

Lori Hashman Berris, with her unmatched expertise and rich 30-year legacy, has ascended to the top spot as Sotheby's International Realty's #1 Agent in Beverly Hills, redefining the essence of luxury real estate.

LORI HASHMAN BERRIS

Senior Global Real Estate Advisor

310.882.8357

Lori.Berris@Sothebys.Realty

LoriBerris.com

CENTURY CITY, CA



2366 Century Hill

4 BR | 4.5 BA | \$3,295,000

BEVERLY HILLS, CA



300 North Swall Drive #255

2 BR + DEN | 2.5 BA | \$3,195,000

LE PARC | CENTURY CITY, CA



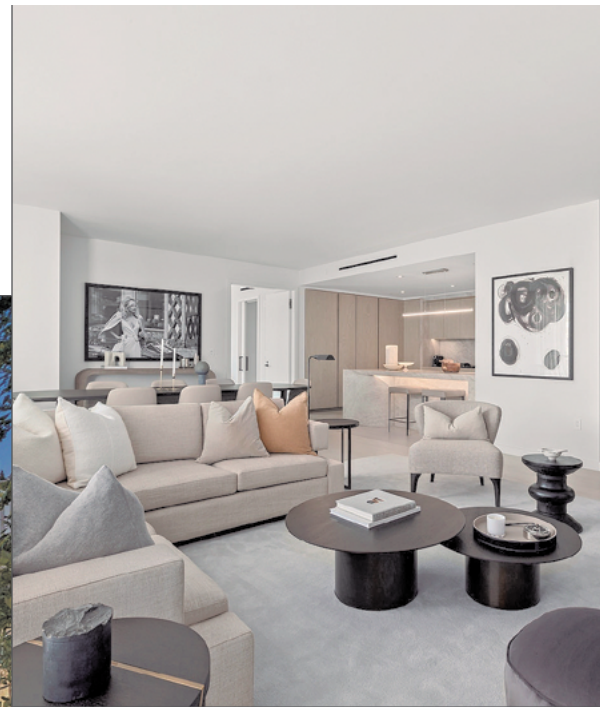
10104 Empyrean Way #204

2 BR | 2.5 BA | \$2,895,000

SOTHEBY'S INTERNATIONAL REALTY - BEVERLY HILLS BROKERAGE | 9665 WILSHIRE BLVD STE 400 BEVERLY HILLS, CALIFORNIA 90212 | SOTHEBYSREALTY.COM

© 2023 Sotheby's International Realty. All Rights Reserved. Sotheby's International Realty® is a registered trademark and used with permission. Each Sotheby's International Realty office is independently owned and operated, except those operated by Sotheby's International Realty, Inc. This material is based upon information which we consider reliable but because it has been supplied by third parties, we cannot represent that it is accurate or complete and it should not be relied upon as such. Equal Housing Opportunity. *Source: Sotheby's International Realty Q1 and Q2 2023 company stats.

Mandarin Oriental Residences Beverly Hills, California



Ranked

#1

BEVERLY HILLS

Lori Hashman Berris
Sr. Global Real Estate Advisor
License# 01933923
310.882.8357
Lori.Berris@Sothebys.Realty
LoriBerris.com

Residence 405 East

2 BR | 2.5 BA | 2,111 SQ FT.
\$6,500,000

Experience the height of luxury at The Mandarin Oriental Residences, Beverly Hills. Residence 405 East, a fully furnished two-bedroom oasis, offers a gourmet kitchen, a large entertainment space, and a master suite epitomizing elegance. Immerse in world-class amenities including a tranquil library, state-of-the-art Fitness Center, yoga studio, and rooftop restaurant with stunning vistas. Coupled with the Mandarin Oriental's renowned five-star service and cuisine from Michelin-starred Chef Daniel Boulud, it's a living experience beyond compare. We invite private viewings of additional residences on request.



Sotheby's
INTERNATIONAL REALTY

SOTHEBY'S INTERNATIONAL REALTY - BEVERLY HILLS BROKERAGE | 9665 WILSHIRE BLVD STE 400 BEVERLY HILLS, CALIFORNIA 90212 | SOTHEBYSREALTY.COM

© 2023 Sotheby's International Realty. All Rights Reserved. Sotheby's International Realty® is a registered trademark and used with permission. Each Sotheby's International Realty office is independently owned and operated, except those operated by Sotheby's International Realty, Inc. This material is based upon information which we consider reliable but because it has been supplied by third parties, we cannot represent that it is accurate or complete and it should not be relied upon as such. Equal Housing Opportunity. *Source: Sotheby's International Realty Q1 and Q2 2023 company stats.

1700 East Altadena Drive



Tracey D Clarke
DRE# 1330679
310.880.7513
tracey.clarke@sothebysrealty.com

1700 East Altadena Drive

6 BR | 5.5 BA | 4,322 SQ FT.
\$5,750,000

A storied past, brought into its next century with stunning renovations, carefully curated with an eye for the exceptional, no detail overlooked. Masterfully built by the Frank Meline Company and attributed to Wallace Neff. It was then and is now an exemplary example of 1920's Spanish Colonial Revival.

1700ALTADENADR.COM



Sotheby's
INTERNATIONAL REALTY

SOTHEBY'S INTERNATIONAL REALTY - BEVERLY HILLS BROKERAGE | 9665 WILSHIRE BLVD STE 400 BEVERLY HILLS, CALIFORNIA 90212 | SOTHEBYSREALTY.COM

© 2023 Sotheby's International Realty. All Rights Reserved. Sotheby's International Realty® is a registered trademark and used with permission. Each Sotheby's International Realty office is independently owned and operated, except those operated by Sotheby's International Realty, Inc. The Sotheby's International Realty network fully supports the principles of the Fair Housing Act and the Equal Opportunity Act.



Named #2 Agent for Q1 and Q2 at Sotheby's International Realty - Beverly Hills Brokerage.

My amazing clients make this possible and I am incredibly grateful. They say you are known by the company you keep and I am privileged to keep company with the exceptional.

Please reach out with all your real estate needs.

RICHARD KLUG

Global Real Estate Advisor

310.991.1333 | DRE# 00745969

richard.klug@sothebys.realty

BEVERLY HILLS, CALIFORNIA | SOLD



67 Beverly Park Court

12 BR | 16.0 BA | LIST PRICE \$67,500,000

sothebysrealty.com/id/B9DD95

LOWER BEL AIR, CALIFORNIA | SOLD



417 Amapola Lane

5 BR | 7 BA | LIST PRICE \$17,200,000

sothebysrealty.com/id/sirlid

SOTHEBY'S INTERNATIONAL REALTY - BEVERLY HILLS BROKERAGE | 9665 WILSHIRE BLVD STE 400 BEVERLY HILLS, CALIFORNIA 90212 | SOTHEBYSREALTY.COM

© 2023 Sotheby's International Realty. All Rights Reserved. Sotheby's International Realty® is a registered trademark and used with permission. Each Sotheby's International Realty office is independently owned and operated, except those operated by Sotheby's International Realty, Inc. This material is based upon information which we consider reliable but because it has been supplied by third parties, we cannot represent that it is accurate or complete and it should not be relied upon as such. Equal Housing Opportunity. *Source: Sotheby's International Realty Q1 and Q2 2023 company stats.



Luxury Real Estate Advisor

TOP 1.5% America's Best Real Estate Professionals

English | German | Farsi

TANYA STAWSKI

Global Luxury Real Estate Advisor

310.801.6033 | DRE# 1918308

tanya.stawski@sothebys.realty | tanyastawski.com

LOS ANGELES, CALIFORNIA



1409 Armacost Avenue 202

3 BR | 2.5 BA | \$1,155,000

1409ArmacostAvenue202.com

MALIBU, CALIFORNIA



5958 Busch Drive

4 BR | 3.5 BA | \$11,500/MONTH

sothebysrealty.com/id/3L6W2N

BEL AIR, CALIFORNIA



1000 Stone Canyon Road

3 BR | 3.5 BA | \$11,800/MONTH

sothebysrealty.com/id/5KF634

SOTHEBY'S INTERNATIONAL REALTY - BEVERLY HILLS BROKERAGE | 9665 WILSHIRE BLVD STE 400 BEVERLY HILLS, CALIFORNIA 90212 | SOTHEBYSREALTY.COM

© 2023 Sotheby's International Realty. All Rights Reserved. Sotheby's International Realty® is a registered trademark and used with permission. Each Sotheby's International Realty office is independently owned and operated, except those operated by Sotheby's International Realty, Inc. This material is based upon information which we consider reliable but because it has been supplied by third parties, we cannot represent that it is accurate or complete and it should not be relied upon as such. Equal Housing Opportunity. *Source: Real Trends America's Best Real Estate Professionals, 2023 rankings based on 2022 data.



Central Coast Wine Country Estate/Venue



Patty Castillo
DRE: 1917216
805.570.6593
Patty@PattyCastillo.com
PattyCastilloRealEstate.com

8300 Cat Canyon Road

8 BR | 9.5 BA | 5,200 SQ FT.
OFFERED AT \$5,900,000 UNTIL 9/15/23

Beautiful estate property amongst 480+/- acres of picturesque California land. A ranch that truly has everything you need for a unique, secluded retreat/wine country estate located in the desirable town of Los Alamos.

8300CATCANYON.COM



Sotheby's
INTERNATIONAL REALTY

SANTA YNEZ VALLEY BROKERAGE | 2900 NOJOQUI AVE LOS OLIVOS, CALIFORNIA 93441 | SOTHEBYSREALTY.COM

© 2023 Sotheby's International Realty. All Rights Reserved. Sotheby's International Realty® is a registered trademark and used with permission. Each Sotheby's International Realty office is independently owned and operated, except those operated by Sotheby's International Realty, Inc. The Sotheby's International Realty network fully supports the principles of the Fair Housing Act and the Equal Opportunity Act.

Point Dume Ocean Views



Matt Rapf
DRE# 00854118
310.916.6053
matt.rapf@sothebys.realty

6855 Dume Drive | Malibu, CA

4 BR | 3.5 BA | 2,673± SQ FT. | 1.461± ACRES
OFFERED AT \$8,700,000

This Point Dume ocean view masterpiece is a stunning Spanish-style residence located in Point Dume, California with breathtaking views of the Pacific Ocean and beach rights to Little Dume, making it a truly exceptional property.

6855DUME.COM

Sotheby's
INTERNATIONAL REALTY

SOTHEBY'S INTERNATIONAL REALTY MALIBU BROKERAGE | 23732 MALIBU ROAD | MALIBU, CA 90265 | SOTHEBYSREALTY.COM

© 2023 Sotheby's International Realty. All Rights Reserved. Sotheby's International Realty® is a registered trademark and used with permission. Each Sotheby's International Realty office is independently owned and operated, except those operated by Sotheby's International Realty, Inc. The Sotheby's International Realty network fully supports the principles of the Fair Housing Act and the Equal Opportunity Act.

MALIBU, CALIFORNIA



31721 Sea Level Drive
4 BR | 6.0 BA | \$18,500,000
sothebysrealty.com/id/FX5BVK

MALIBU, CALIFORNIA



27352 Pacific Coast Highway
4 BR | 5.0 BA | \$13,226,000
sothebysrealty.com/id/2GWF95

MALIBU, CALIFORNIA



31974 Pacific Coast Highway
4 BR | 4.5 BA | \$11,500,000
sothebysrealty.com/id/M3ZVEH

MALIBU, CALIFORNIA



22355 Carbon Mesa Road
5 BR | 5.0 BA | \$10,900,000
sothebysrealty.com/id/4PV45W



Shen Schulz
License# 1327630
310.980.8809
shen@shenrealty.com
shenrealty.com



SOTHEBY'S INTERNATIONAL REALTY - MALIBU BROKERAGE | 23405 PACIFIC COAST HWY MALIBU, CALIFORNIA 90265 | SOTHEBYSREALTY.COM

© 2023 Sotheby's International Realty. All Rights Reserved. Sotheby's International Realty® is a registered trademark and used with permission. Each Sotheby's International Realty office is independently owned and operated, except those operated by Sotheby's International Realty, Inc. The Sotheby's International Realty network fully supports the principles of the Fair Housing Act and the Equal Opportunity Act.

Escape to Summit View Ranch Ventura County



Tony DeFranco
License# 00815381
805.208.1904
tony.defranco@sothebys.realty

2065 E La Loma Avenue

5 BR | 8.0 BA | 6,446 SQ FT.

\$4,950,000

Experience true freedom at Summit View Ranch. Nestled amidst the serene avocado and citrus groves of peaceful Somis, California, this gated 46+ acre Estate & community offers unparalleled privacy and awe-inspiring views. Behold majestic mountains, captivating sunrises and sunsets, and stunning views of the ocean stretching towards the Channel Islands. Includes Guest house, caretaker's residence, finished barn, avocado grove and an impressive 27-car covered garage spaces.

[SOTHEBYSREALTY.COM/ID/ZY85DG](https://www.sotthebysrealty.com/id/zy85dg)



Sotheby's
INTERNATIONAL REALTY

SOTHEBY'S INTERNATIONAL REALTY - WESTLAKE VILLAGE BROKERAGE | 3075 TOWNSGATE RD STE 100 WESTLAKE VILLAGE, CALIFORNIA 91361 | [SOTHEBYSREALTY.COM](https://www.sotthebysrealty.com)

© 2023 Sotheby's International Realty. All Rights Reserved. Sotheby's International Realty® is a registered trademark and used with permission. Each Sotheby's International Realty office is independently owned and operated, except those operated by Sotheby's International Realty, Inc. The Sotheby's International Realty network fully supports the principles of the Fair Housing Act and the Equal Opportunity Act.

AGOURA HILLS, CA



29146 Wagon Road

5 BR | 4.5 BA | \$3,700,000 29146WagonRoad.com

With picturesque style in a parklike setting, this 5-bedroom, 4.5-bathroom, Agoura Hills home is made for relaxation and fun.

LAKE SHERWOOD, CA



2100 Trentham Road

4 BR | 4.5 BA | \$5,895,000 2100TrenthamRd.com

With spectacular views and a waterfront private dock, this 4-bedroom, 4.5-bathroom, Lake Sherwood home is made for entertainment and tranquility.



CATHIE MESSINA

Sales Associate DRE#00893569

818.335.8047 | cathiemessina.com

cathie.messina@sothebys.realty

WESTLAKE VILLAGE BROKERAGE | 3075 TOWNSGATE RD., STE 100, WESTLAKE VILLAGE, CA 91361 | SOTHEBYSREALTY.COM



Gavilan Hills Estate



Michele Sparks
DRE #01304923
951.367.9431
michele.sparks
@sothebysrealty.com

17325 High Country Circle, Gavilan Hills, CA

5 BR | 3.5 BA | 3,984 SQ FT.

\$2,195,000

This private 2.23 acre property is a horse enthusiast and sports lover's Dream! This Single-story home offers an open concept with upgraded finishes & appliances throughout. Features a full size tennis court, 4 stall barn & arena, pool & spa, and commercial well. Gavilan Hills is centrally located between San Diego and Orange County, LA and Beverly Hills, Palm Springs or the Mountains.

[SOTHEBYSREALTY.COM/ID/BY5JNL](https://www.sothebysrealty.com/id/by5jnl)

Pacific | Sotheby's
INTERNATIONAL REALTY

PACIFIC SOTHEBY'S INTERNATIONAL REALTY | 32356 S. COAST HWAY, LAGUNA BEACH, CA 92651 | SOTHEBYSREALTY.COM

© 2023 Sotheby's International Realty. All Rights Reserved. Sotheby's International Realty® is a registered trademark and used with permission. Each Sotheby's International Realty office is independently owned and operated, except those operated by Sotheby's International Realty, Inc. The Sotheby's International Realty network fully supports the principles of the Fair Housing Act and the Equal Opportunity Act.

2579 14th Avenue, Carmel



Jessica Canning
Agent
DRE #01920034
831.238.5535

Luscious Gardens & Ocean Views

3 BR | 2 BA | 2,248 SQ FT.

\$4,600,000

2579 14th Avenue is nestled on Carmel Point, between Carmel and River Beaches, and epitomizes California coastal living. Enjoy ocean views and serene tranquility from this charming cottage that boasts curb appeal and a meticulous pride of ownership. The open floorplan and private courtyard make this ideal for entertaining or just enjoying the Carmel lifestyle.

CARMELCOTTAGEON14TH.COM

Sotheby's
INTERNATIONAL REALTY

CARMEL RANCHO | 3775 VIA NONA MARIE #100 CARMEL, CA 93923 | CANNINGPROPERTIES.COM | JESSICA@CANNINGPROPERTIES.COM

© 2023 Sotheby's International Realty. All Rights Reserved. Sotheby's International Realty® is a registered trademark and used with permission. Each Sotheby's International Realty office is independently owned and operated, except those operated by Sotheby's International Realty, Inc. The Sotheby's International Realty network fully supports the principles of the Fair Housing Act and the Equal Opportunity Act. Mike Canning DRE: 01004964, Jessica Canning DRE: 01920034, Nie Canning DRE: 01959355, Ellen Armstrong DRE: 02046046, Brian Keck DRE: 02070480, David Reese: DRE: 02121762, Paige Colijn DRE#02168140, Kelly Savukinas DRE#02053030, Anita Jones DRE# 01926760, Seth Reese DRE# 02202742, & Spiro Pettas DRE#02066568.

GLEN ELLEN, CALIFORNIA



Modern Masterpiece

4 BR | 6 BA | \$7,495,000 ModernMasterpiece.com

Experience sophisticated living in this newly constructed modern home with 4,376± sq.ft. and incredible architectural details that seamlessly blend indoor and outdoor living.

KENWOOD, CALIFORNIA



2000 Lawndale Road

5 BR | 6 BA | \$6,925,000 LawndaleRoad.com

Uniquely designed for entertaining, this home is perfectly suited for quintessential Wine County living with room to roam on 5.96± acres.



HOLLY BENNETT

DRE# 00973279

707.484.4747

holly.bennett@sothebysrealty.com

SOTHEBY'S INTERNATIONAL REALTY - WINE COUNTRY – SONOMA BROKERAGE | 793 BROADWAY SONOMA, CALIFORNIA 95476 | SOTHEBYSREALTY.COM

© 2023 Sotheby's International Realty. All Rights Reserved. Sotheby's International Realty® is a registered trademark and used with permission. Each Sotheby's International Realty office is independently owned and operated, except those operated by Sotheby's International Realty, Inc. The Sotheby's International Realty network fully supports the principles of the Fair Housing Act and the Equal Opportunity Act.

A Happy Valley Playground for All Ages



Ann Newton Cane
License# 02084093
415.999.0253
a.newtoncane@ggsir..com

3941 Happy Valley Road, Lafayette, CA

4 BR | 5.5 BA | 8,620 SQ FT.

\$9,950,000

This 8,620 sq. ft. magnificent retreat sits on 2.3 acres at the end of a private drive, a world away from life's cares. It offers entertainment for those of any age: a tennis court (convertible to pickleball), basketball court, batting cage, swimming pool with waterfalls and slide, two Jacuzzi spas, golf simulator, children's play area, professional movie theatre and much more.

[SOTBYSREALTY.COM/ID/SRY66S](https://www.sotbysrealty.com/id/sry66s)



Golden Gate | Sotheby's
INTERNATIONAL REALTY

GOLDEN GATE SOTHEBY'S INTERNATIONAL REALTY | 3725 MT DIABLO BOULEVARD LAFAYETTE, CALIFORNIA 94549 | SOTHEBYSREALTY.COM

© 2023 Sotheby's International Realty. All Rights Reserved. Sotheby's International Realty® is a registered trademark and used with permission. Each Sotheby's International Realty office is independently owned and operated, except those operated by Sotheby's International Realty, Inc. The Sotheby's International Realty network fully supports the principles of the Fair Housing Act and the Equal Opportunity Act.

Luxe Wine Country Living



Michael Dreyfus

Lic. # 1121795
+1 650.485.3476
michael.dreyfus
@sothebysrealty.com



Carole Sauers

Lic. # 01800947
+1 707.888.1256
carole.sauers
@sothebysrealty.com

728 University Street, Healdsburg, California

4 BR | 6 BA | 4,104 SQ FT. | 0.28 ACRE
\$10,5000,000

Enjoy luxe indoor/outdoor living in this modern showpiece. Newly completed, this stunning home showcases handsome architecture, natural materials, and a clean, open layout with large expanses of glass that take full advantage of breathtaking Fitch Mountain views. Situated near local schools, and wonderful downtown Healdsburg which offers boutique shops, tasting rooms, art galleries, and gourmet restaurants. A rare offering that beautifully pairs a world-class destination with an equally luxurious resort-style home.



728UNIVERSITY.COM

Golden Gate | Sotheby's
INTERNATIONAL REALTY

GOLDEN GATE SOTHEBY'S INTERNATIONAL REALTY | 640 OAK GROVE AVENUE, MENLO PARK, CALIFORNIA 94025 | SOTHEBYSREALTY.COM

© 2023 Sotheby's International Realty. All Rights Reserved. Sotheby's International Realty® is a registered trademark and used with permission. Each Sotheby's International Realty office is independently owned and operated, except those operated by Sotheby's International Realty, Inc. The Sotheby's International Realty network fully supports the principles of the Fair Housing Act and the Equal Opportunity Act.

Spectacular, Restored Piedmont Estate



Michael Dreyfus

Lic. # 1121795
+1 650.485.3476
michael.dreyfus
@sothebysrealty.com



Ann Newton
Cane

Lic. # 02084093
+1 415.999.0253
ann.newtoncane
@sothebysrealty.com

395 Hampton Road, Piedmont, California

8 BR | 9 BA | 11,870 SQ FT. | 1.01 ACRES
\$16,250,000

Extraordinary opportunity to own a completely renovated and updated heritage estate in the refined San Francisco Bay Area enclave of Piedmont. The home, on a level, one-acre lot, offers indoor/outdoor living on all three levels and all sides of the house. A one-of-a-kind gem, withdrawn from city hustle and bustle but near enough to enjoy all the San Francisco Bay Area has to offer.



395HAMPTONROAD.COM

Golden Gate | Sotheby's
INTERNATIONAL REALTY

GOLDEN GATE SOTHEBY'S INTERNATIONAL REALTY | 640 OAK GROVE AVENUE, MENLO PARK, CALIFORNIA 94025 | SOTHEBYSREALTY.COM

© 2023 Sotheby's International Realty. All Rights Reserved. Sotheby's International Realty® is a registered trademark and used with permission. Each Sotheby's International Realty office is independently owned and operated, except those operated by Sotheby's International Realty, Inc. The Sotheby's International Realty network fully supports the principles of the Fair Housing Act and the Equal Opportunity Act.



Indulge in Waterfront Splendor: The Crown Jewel of Normandy Park



Summer Carlton
Global Real Estate Advisor
206.595.1231
summer.carlton
@sothebysrealty.com

Linda Chou
Global Real Estate Advisor
206.852.0714
linda.chou
@sothebysrealty.com



17915 Normandy Terrace SW

4 BR | 4.5 BA | 7,043 SQ FT.
\$4,980,000

Nestled in the heart of prestigious Normandy Park, this beautiful 1928 Tudor home stands as a testament to architectural mastery and refined craftsmanship. As the second house ever built in Normandy Park, it exudes a sense of history and opulence that will captivate even the most discerning resident.

[SOTHEBYSREALTY.COM/ID/GBJL5T](https://www.sothebysrealty.com/id/gbjl5t)



Realogics | Sotheby's
INTERNATIONAL REALTY

REALOGICS SOTHEBY'S INTERNATIONAL REALTY | 4031 E MADISON STREET SEATTLE, WA 98112 | SOTHEBYSREALTY.COM

© 2023 Sotheby's International Realty. All Rights Reserved. Sotheby's International Realty® is a registered trademark and used with permission. Each Sotheby's International Realty office is independently owned and operated, except those operated by Sotheby's International Realty, Inc. The Sotheby's International Realty network fully supports the principles of the Fair Housing Act and the Equal Opportunity Act.

Iconic Seattle Penthouse



Ev Wunningham
 WA License #17906
 425-765-8889
 Ev.Wunningham
 @sothebysrealty.com
 winninghamking.com

111 West Highland Drive 9E & 9W
 3 BR | 5 BA | 2 DENS | MEDIA ROOM | 5,356 SQ FT.
 \$12,000,000

This is your chance to own a spectacular penthouse, ideally located on Queen Anne Hill, overlooking Downtown Seattle. Situated on a quiet, tree-lined street, 111 W Highland Drive is one of the finest boutique buildings in the city. This stunningly beautiful home encompasses the entire top floor of the building, and offers sweeping views of the Seattle skyline, Space Needle, Puget Sound, and the Cascade and Olympic Mountains. This home is for those with the most discerning taste, who crave privacy and yearn for an unrivaled setting, with top of the world views and amazing sunsets.



Kimberleigh King
 WA License #34870
 206-948-7003
 Kimberleigh.King
 @sothebysrealty.com
 winninghamking.com

ICONICSEATTLEPENTHOUSE.COM



LAKESWOOD, WA



29 Country Club Dr SW

5 BR | 5.5 BA | \$3,195,000

29CountryClub.com

OLYMPIA, WA



5014 Foxtrail Dr NE

4 BR | 2.5 BA | \$2,295,000

5014Foxtrail.com

TACOMA, WA



2026 Browns Point Blvd

7 BR | 6.25 BA | \$3,795,000

2026BrownsPoint.com

LAKESWOOD, WA



4 Thornewood Lane SW

5 BR | 4.5 BA | \$2,295,000

4Thornewood.com



MICHAEL MORRISON

Managing Broker | Owner

253.606.5925

Michael@MyUniqueHome.com

2622 N PROCTOR ST, TACOMA | 3004 HARBORVIEW DR, GIG HARBOR | SOTHEBYSREALTY.COM.

New Build Luxury Modern Farmhouse in Portland, Oregon



Alison Derse
Broker Licensed in Oregon
503.748.9818
alison@alisonpdx.com

3380 SW Underwood Drive, Portland, OR 97225

4 BR | 3.5 BA | 3,623 SQ FT. | 0.48 ACRES
\$2,490,000

Luxurious one-level Modern Farmhouse ranch sits on a flat, private half-acre in Vista Hills in Portland, Oregon. The elegant open floor plan, oversized windows and high ceilings provide natural light. This 2022 build is a dream for buyers seeking a thoughtfully designed, spacious home with highly ranked schools and easy access to nature, local amenities, Nike, Intel and nearby hospitals.

[SOTBYSREALTY.COM/ID/QR4PG9](https://www.sotbysrealty.com/id/QR4PG9)



Cascade Hasson | Sotheby's
INTERNATIONAL REALTY

CASCADE HASSON SOTHEBY'S INTERNATIONAL REALTY | 1500 NE IRVING STREET SUITE 110, PORTLAND, OR 97232 | [CASCADEHASSON.COM](https://www.cascadehasson.com)

© 2023 Sotheby's International Realty. All Rights Reserved. Sotheby's International Realty® is a registered trademark and used with permission. Each Sotheby's International Realty office is independently owned and operated, except those operated by Sotheby's International Realty, Inc. The Sotheby's International Realty network fully supports the principles of the Fair Housing Act and the Equal Opportunity Act.



YOUR HOME. First Class Service at Every Price Point.

Working side by side for over 10 yrs, we offer 30 yrs combined real estate experience and are consistently a top producing team in Central Oregon. Whether buying or selling, we are committed to being your trusted real estate source, and will proudly represent you in the BEST place to live, work, and play!

JORDAN GRANDLUND

Principal Broker

541.420.1559

jordan.grandlund@sothebysrealty.com

STEPHANIE RUIZ

Broker

541.948.5196

stephanie.ruiz@sothebysrealty.com

BEND, OREGON



61645 Rowallan Court

3 BR | 3.5 BA | \$4,350,000

sothebysrealty.com/id/TN59VV

BEND, OREGON



20331 SE Jack Benny Loop

4 BR | 3.5 BA | \$1,174,750

sothebysrealty.com/id/6JQXJZ

CASCADE HASSON SOTHEBY'S INTERNATIONAL REALTY | 650 SW BOND ST. STE 100 BEND, OR97702 | SOTHEBYSREALTY.COM

© 2023 Sotheby's International Realty. All Rights Reserved. Sotheby's International Realty® is a registered trademark and used with permission. Each Sotheby's International Realty office is independently owned and operated, except those operated by Sotheby's International Realty, Inc. The Sotheby's International Realty network fully supports the principles of the Fair Housing Act and the Equal Opportunity Act.

BEND, OREGON



18665 Macalpine Loop

5 BR | 7 FULL & 3 HALF BA | \$12,900,000 sothebysrealty.com/id/XVZK85

Located on 10 acres in the Highlands at Broken Top, featuring 11,515 SF w/additional 960 SF guest house, swimming pool, 8 car garage w/RV Bay, 360 degree mtn views, and more!

BEND, OREGON



61352 Triple Knot Road

2 BR | 2.5 BA | \$1,199,000

sothebysrealty.com/id/89FBNR

BEND, OREGON



213 SW Log Court

4 BR | 4 BA | \$1,799,750

sothebysrealty.com/id/2YBXEP



JORDAN GRANDLUND

Principal Broker

541.420.1559

jordan.grandlund@sothebysrealty.com



STEPHANIE RUIZ

Broker

541.948.5196

stephanie.ruiz@sothebysrealty.com

CASCADE HASSON SOTHEBY'S INTERNATIONAL REALTY | 650 SW BOND ST. STE 100 BEND, OR. 97702 | SOTHEBYSREALTY.COM

© 2023 Sotheby's International Realty. All Rights Reserved. Sotheby's International Realty® is a registered trademark and used with permission. Each Sotheby's International Realty office is independently owned and operated, except those operated by Sotheby's International Realty, Inc. The Sotheby's International Realty network fully supports the principles of the Fair Housing Act and the Equal Opportunity Act.



Private 10+ Acres Among Three Sisters Wilderness

Suzanne Carvlin
Principal Broker
818.216.8542
suzanne.carvlin
@cascadehasson.com

Patty Cordoni
Principal Broker
541.771.0931
patty.cordoni
@cascadehasson.com



67655 Peterson Burn Road, Sisters, OR 97759

3 BR | 4 BA | 3,865 SQ FT.

\$1,650,000

Hidden gem with National Forest as your backyard in Sisters, Oregon. Relax and unwind in this two-story home featuring a bonus room, a finished 2-car garage with a 2-car garage, and a detached shop/barn. Covered front and back decks, a fire pit, and a swimming pond with a waterfall. Also includes a fully fenced side yard making it a great play area for kids and pets.



[SOTHEBYSREALTY.COM/ID/BRS597](https://www.sothebysrealty.com/id/BRS597)

Cascade Hasson | Sotheby's
INTERNATIONAL REALTY



CASCADE HASSON SOTHEBY'S INTERNATIONAL REALTY | 290 E. CASCADE AVENUE, PO BOX 209, SISTERS, OR 97759 | CASCADEHASSON.COM

© 2023 Sotheby's International Realty. All Rights Reserved. Sotheby's International Realty® is a registered trademark and used with permission. Each Sotheby's International Realty office is independently owned and operated, except those operated by Sotheby's International Realty, Inc. The Sotheby's International Realty network fully supports the principles of the Fair Housing Act and the Equal Opportunity Act.

Embrace Serenity with Lake and Golf Course Views



Cheryl Hunt
S.0179583.LLC
702.334.4512
cheryl.hunt
@sothebysrealty.com

12 Desert Lake Ln, Henderson, Nevada 89011

4 BR | 5 BA | 4,694 SQ FT.

\$2,950,000

Nestled amidst the breathtaking beauty of Lake Las Vegas, this new 2022 well-appointed contemporary modern estate showcases an array of luxurious amenities. Indulge in the exquisite vistas of the serene lake and picturesque golf course. Experience the epitome of luxury living, where breathtaking views, sophisticated design, and an exclusive lifestyle converge.

[SOTHEBYSREALTY.COM/ID/3JMTBZ](https://www.sothebysrealty.com/id/3JMTBZ)

Las Vegas | **Sotheby's**
INTERNATIONAL REALTY

LAS VEGAS SOTHEBY'S INTERNATIONAL REALTY | 8548 ROZITA LEE AVE | SUITE 100 | LAS VEGAS, NV 89113 | WWW.LASVEGASSIR.COM

© 2023 Sotheby's International Realty. All Rights Reserved. Sotheby's International Realty® is a registered trademark and used with permission. Each Sotheby's International Realty office is independently owned and operated, except those operated by Sotheby's International Realty, Inc. The Sotheby's International Realty network fully supports the principles of the Fair Housing Act and the Equal Opportunity Act.

Meet the New Sales Team for Mira Villa



Randy Char Team
B.0143566.LLC
702.544.0384
randy.char
@sothebysrealty.com

Located within the established Canyons Village of the Summerlin® master plan and overlooking the Angel Park championship golf course, Mira Villa is an elegant collection of 103 mid-rise luxury condominium homes. Home designs feature elevated single-level living, direct elevator access, gourmet kitchens, primary suites, private garage parking, and more. Recreational opportunities abound both in the surrounding community and within Mira Villa including a community pool, clubhouse, multiple spas and park areas, and access to The Canyons walking paths.



Las Vegas | **Sotheby's**
INTERNATIONAL REALTY

LAS VEGAS SOTHEBY'S INTERNATIONAL REALTY | 8548 ROZITA LEE AVE | SUITE 100 | LAS VEGAS, NV 89113 | WWW.LASVEGASSIR.COM

© 2023 Sotheby's International Realty. All Rights Reserved. Sotheby's International Realty® is a registered trademark and used with permission. Each Sotheby's International Realty office is independently owned and operated, except those operated by Sotheby's International Realty, Inc. The Sotheby's International Realty network fully supports the principles of the Fair Housing Act and the Equal Opportunity Act.



The Phoenix of Hobble Creek



Dave Maltby
801.735.8378
dave.maltby
@sothebysrealty.com

1141 South 3400 East, Springville, Utah

7 BR | 5 BA | 8,785 SQ FT | 8.73 AC | \$7,000,000

Nestled at the mouth of Hobble Creek Canyon, this private oasis provides a tranquil escape with breathtaking views of the surrounding natural beauty. Enjoy endless outdoor adventures with close proximity to world-class golf, camping, hunting and trails. With open living and luxurious comfort, the extensive remodel showcases exquisite finish work and modern design. Features include two mother-in-law apartments, a theater room, exterior radiant heat and a five-car garage.



[SOTHEBYSREALTY.COM/ID/62H359](https://www.sothebysrealty.com/id/62H359)

Summit | Sotheby's
INTERNATIONAL REALTY

SUMMIT SOTHEBY'S INTERNATIONAL REALTY | 13693 SOUTH 200 WEST, SUITE 100, DRAPER, UTAH 84020 | [SUMMITSOTHEBYSREALTY.COM](https://www.summitsothebysrealty.com)

© 2023 Sotheby's International Realty. All Rights Reserved. Sotheby's International Realty® is a registered trademark and used with permission. Each Sotheby's International Realty office is independently owned and operated, except those operated by Sotheby's International Realty, Inc. The Sotheby's International Realty network fully supports the principles of the Fair Housing Act and the Equal Opportunity Act.



Elevated Alpine Living at Wohali

Onie Bolduc

Sales Associate
435.631.1615
onie.bolduc
@sothebysrealty.com

Eric Finley

Sales Associate
435.681.1136
eric.finley
@sothebysrealty.com

Hank Pool

Sales Associate
303.884.7373
hank.pool
@sothebysrealty.com



Located in Utah's Wasatch Mountains, Just Outside of Park City

Offering Homesites Ranging Between \$700,000 – \$2,350,000

Offering Semi-Custom Homes Summer 2023

Wohali is Utah's newest luxury mountain community where family, friends and loved ones experience wellness and inspiration. Limitless adventures, four seasons of natural wonder and a commitment to open space await. From awe-inspiring architecture to rejuvenating amenities, world-class golf and on-site private cat skiing, Wohali is redefining community and mountain living.



WOHALIUTAH.COM

Summit | Sotheby's
INTERNATIONAL REALTY

SUMMIT SOTHEBY'S INTERNATIONAL REALTY | 1750 PARK AVENUE PO BOX 2370, PARK CITY, UTAH 84060 | SUMMITSOTHEBYSREALTY.COM

© 2023 Sotheby's International Realty. All Rights Reserved. Sotheby's International Realty® is a registered trademark and used with permission. Each Sotheby's International Realty office is independently owned and operated, except those operated by Sotheby's International Realty, Inc. The Sotheby's International Realty network fully supports the principles of the Fair Housing Act and the Equal Opportunity Act.

PARK CITY, UTAH



67 Red Cloud Trail, #23

1.49 ACRES | \$6,000,000 sothebysrealty.com/id/3E27CV

Located in Red Cloud in Empire Pass on Deer Valley's® Flagstaff Mountain with ideal ski access in an alpine setting surrounded by trees. Build the ultimate ski-in/ski-out legacy home.

PARK CITY, UTAH



7981 Ridgepoint Drive, #105

3 BR | 3 BA | 2,184 SF | \$2,650,000 sothebysrealty.com/id/VD4ECT

This spacious Upper Deer Valley® townhome is positioned in a premium, front row location adjacent to community open space. Enjoy easy ski access and stunning views.



QUINN EICHNER

Sales Associate

435.640.1854

quinn.eichner@sothebysrealty.com



DENA EYTAN

Sales Associate

435.659.9347

dena.eytan@sothebysrealty.com

SUMMIT SOTHEBY'S INTERNATIONAL REALTY | 1750 PARK AVENUE PO BOX 2370, PARK CITY, UTAH 84060 | SUMMITSOTHEBYSREALTY.COM

© 2023 Sotheby's International Realty. All Rights Reserved. Sotheby's International Realty® is a registered trademark and used with permission. Each Sotheby's International Realty office is independently owned and operated, except those operated by Sotheby's International Realty, Inc. The Sotheby's International Realty network fully supports the principles of the Fair Housing Act and the Equal Opportunity Act.



Alpine Lake Cabin Community with Luxury Amenities



Seth Porter
801.573.9016
seth.porter
@sothebysrealty.com



The Outpost at Conestoga Ranch – Bear Lake, Utah

34 HOMESITES STARTING AT \$845,000

Discover a new, elevated way to experience the very best of Bear Lake. Our alpine lake cabins offer a mountain modern, farmhouse style with a focus on eco-friendly design and stunning landscapes. Each two-bedroom, two-bath luxury cabin is wrapped in a gorgeous outdoor living deck with optional hot tubs and fire pits. Homesites are available on which to build a turn-key family retreat, your basecamp for Bear Lake outdoor recreation.



THEOUTPOSTCR.COM

Summit | Sotheby's
INTERNATIONAL REALTY

SUMMIT SOTHEBY'S INTERNATIONAL REALTY | 1750 PARK AVENUE PO BOX 2370, PARK CITY, UTAH 84060 | SUMMITSOTHEBYSREALTY.COM

© 2023 Sotheby's International Realty. All Rights Reserved. Sotheby's International Realty® is a registered trademark and used with permission. Each Sotheby's International Realty office is independently owned and operated, except those operated by Sotheby's International Realty, Inc. The Sotheby's International Realty network fully supports the principles of the Fair Housing Act and the Equal Opportunity Act.

Live at Velvære



Keri Holland &
Liza Story
Sales Associates
435.602.6570
info@velvaereparkcity.com

Park City, Utah

CABINS, PAIRED HOMES, AND ESTATES | Homes from \$3,600,000 | Lots from \$1,900,000
This 60-acre community will feature direct ski-in, ski-out access and year-round mountain adventure through an on-site ski lift, extensive ski terrain, discovery-focused outdoor spaces, an integrative wellness center, and family adventure center. Now available; the first paired homes will deliver December, 2023.

VELVAEREPARKCITY.COM



Summit | Sotheby's
INTERNATIONAL REALTY

SUMMIT SOTHEBY'S INTERNATIONAL REALTY | 1750 PARK AVENUE PO BOX 2370, PARK CITY, UTAH 84060 | SUMMITSOTHEBYSREALTY.COM

© 2023 Sotheby's International Realty. All Rights Reserved. Sotheby's International Realty® is a registered trademark and used with permission. Each Sotheby's International Realty office is independently owned and operated, except those operated by Sotheby's International Realty, Inc. The Sotheby's International Realty network fully supports the principles of the Fair Housing Act and the Equal Opportunity Act.

Grand Teton Views on 38 Acres



Charlie Ross
Associate Broker
307.413.7449
charlie.ross@jhsir.com



Grand Teton Views on 38 Acres

38.3 AC | \$10,000,000

An incredible opportunity to build your dream home in the heart of Jackson Hole. Upon entering Spring Creek Ranch Road, halfway toward Amangani and Spring Creek Resort, you will find 38 private and secluded acres with sweeping views of the Grand Teton, entire Teton range, including Rendezvous Peak and the tram, Mt. Glory and Teton pass. This is an ideal location that offers a lifestyle of wilderness serenity and access to modern convenience.

SOTHEBYSREALTY.COM/ID/V2243L



JACKSON HOLE SOTHEBY'S INTERNATIONAL REALTY | 185 WEST BROADWAY P.O. BOX 3281 JACKSON, WYOMING 83001 | SOTHEBYSREALTY.COM

© 2023 Sotheby's International Realty. All Rights Reserved. Sotheby's International Realty® is a registered trademark and used with permission. Each Sotheby's International Realty office is independently owned and operated, except those operated by Sotheby's International Realty, Inc. The Sotheby's International Realty network fully supports the principles of the Fair Housing Act and the Equal Opportunity Act.

MARFA, TEXAS



705 West Bonnie

5 BR | 5.2 BA | 10,833 SF | 2.29 ACRES | LISTED FOR \$3,000,000
sothebysrealty.com/id/9LDP54

MARFA, TEXAS



112 East Galveston Street

1 BR | 1.1 BA | 1,269 SF | .14 ACRES | LISTED FOR \$799,000
sothebysrealty.com/id/WF66LS

MARFA, TEXAS



415 North Plateau Street

6 BR | 3.2 BA | 5,825 SF | .97 ACRES | LISTED FOR \$990,000
sothebysrealty.com/id/67WJ5L

MARFA, TEXAS



419 East Mendias Street

2 BR | 1 BA | 1,414 SF | .26 ACRES | LISTED FOR \$728,000
sothebysrealty.com/id/VTKJF3



LAUREN MEADER FOWLKES
Broker Associate
c. 432.295.2849
lauren.meaderfowlkes@sir.com

KUPER SOTHEBY'S INTERNATIONAL REALTY | 5000 BROADWAY, SAN ANTONIO, TEXAS 78209 | SOTHEBYSREALTY.COM

© 2023 Sotheby's International Realty. All Rights Reserved. Sotheby's International Realty® is a registered trademark and used with permission. Each Sotheby's International Realty office is independently owned and operated, except those operated by Sotheby's International Realty, Inc. The Sotheby's International Realty network fully supports the principles of the Fair Housing Act and the Equal Opportunity Act.

Breathtaking 1.2 Acres in Fort Worth



Megan Green
281-687-4134
mgreen@briggsgreeman.com



9517 Bella Terra Drive | Fort Worth, Texas

5 BR | 5.2 BA | 10,146 SQ FT
\$3,970,000

Sited on 1.2 acres in prestigious gated community Montserrat, this property exudes elegance and sophistication. The European-inspired manse, which was built in 2005 and has been recently updated, features a media room, a gym, a putting green, an eight-car garage and an expansive covered patio overlooking a cabana and heated pool. The picture of luxury living, this home has it all!

BRIGGSFREEMAN.COM



Briggs
Freeman | Sotheby's
INTERNATIONAL REALTY

FORT WORTH OFFICE | 4828 CAMP BOWIE BLVD FORT WORTH, TX 76107 | SOTHEBYSREALTY.COM

© 2023 Sotheby's International Realty. All Rights Reserved. Sotheby's International Realty® is a registered trademark and used with permission. Each Sotheby's International Realty office is independently owned and operated, except those operated by Sotheby's International Realty, Inc. The Sotheby's International Realty network fully supports the principles of the Fair Housing Act and the Equal Opportunity Act.

Spanish Revival Sanctuary in Dallas



Sylvia Scott
214-536-4414
sscott@briggsfreeman.com

6825 Golf Drive | Dallas, Texas

6 BR | 6.4 BA | 14,652 SQ FT
\$19,950,000

An artful blend of Spanish Revival architecture and Contemporary design, this incomparable home sits on 0.66 acres along Turtle Creek, in the esteemed Dallas enclave of University Park. Among its many noteworthy features are two offices, a gym, a media room, a billiards room, a soundproof gaming room, an indoor soccer court, an infinity-edge pool and spa, a cabana and a pool house.

BRIGGSFREEMAN.COM



Briggs
Freeman | Sotheby's
INTERNATIONAL REALTY

TURTLE CREEK OFFICE | 3131 TURTLE CREEK BLVD, 4TH & 5TH FLOOR DALLAS, TX 75219 | SOTHEBYSREALTY.COM

© 2023 Sotheby's International Realty. All Rights Reserved. Sotheby's International Realty® is a registered trademark and used with permission. Each Sotheby's International Realty office is independently owned and operated, except those operated by Sotheby's International Realty, Inc. The Sotheby's International Realty network fully supports the principles of the Fair Housing Act and the Equal Opportunity Act.



Welcome to East Tennessee!

My family's roots grow deep in Knoxville, and as a Realtor, I love showing people all that our area has to offer. For the past 20 years I've helped clients successfully navigate the ups and downs of the ever-changing real estate market. Whether it's buying or selling a lakeside property, an equestrian estate, a historic home, or a downtown condo, I have experience representing the very best that East Tennessee has to offer.

ANGIE RIEDL

Real Estate Broker

865.385.8264

angieriedl.com

LOUISVILLE, TN



3765 Jackson Bend Drive

6 BR | 8 BA | 3.4 ACRES | \$5,500,000

sothebysrealty.com/id/4RYFQ5

KNOXVILLE, TN



307 Triplett Lane

5 BR | 6.5 BA | 47 ACRES | \$16,500,000

sothebysrealty.com/id/FQNEB4

ALLIANCE SOTHEBY'S INTERNATIONAL REALTY | 8862 CEDAR SPRINGS LANE SUITE 100, KNOXVILLE, TN 37923 | ANGIERIEDL.COM

© 2023 Sotheby's International Realty. All Rights Reserved. Sotheby's International Realty® is a registered trademark and used with permission. Each Sotheby's International Realty office is independently owned and operated, except those operated by Sotheby's International Realty, Inc. The Sotheby's International Realty network fully supports the principles of the Fair Housing Act and the Equal Opportunity Act.

Elegant Coastal Estate in Premier Florida Location



Craig Baranowski
License# 3082340
850.259.1788
Craig.Baranowski
@sothebysrealty.com

824 W Beach Drive, Panama City, FL 32401

5 BR | 3.5 BA | 8,498 SQ FT.

\$3,800,000

In what might arguably be the finest home constructed in Panama City, you'll find the perfect synthesis of elegant design and attention to detail that simply could not be replicated today. Overlooking unobstructed views of St. Andrews Bay, with shades of the South Carolina Lowcountry outside and worldly influences indoors, this remarkable Del-Mar home is not to be missed.

[SOTHEBYSREALTY.COM/ID/65887N](https://www.sothebysrealty.com/id/65887N)



Scenic | Sotheby's
INTERNATIONAL REALTY

SCENIC SOTHEBY'S INTERNATIONAL REALTY | 12805 US HWY 98 E SUITE D201 INLET BEACH, FL 32461 | [SOTHEBYSREALTY.COM](https://www.sothebysrealty.com)

© 2023 Sotheby's International Realty. All Rights Reserved. Sotheby's International Realty® is a registered trademark and used with permission. Each Sotheby's International Realty office is independently owned and operated, except those operated by Sotheby's International Realty, Inc. The Sotheby's International Realty network fully supports the principles of the Fair Housing Act and the Equal Opportunity Act.

PALM BEACH, FLORIDA



Pendleton Avenue

4 BR | 4.5 BA | \$14,950,000

236PendletonAvenue.com

PALM BEACH, FLORIDA



Modern In Town Residence

4 BR | 4.5 BA | \$12,500,000

224Atlantic.com

NORTH PALM BEACH, FLORIDA



Seminole Landing with Dock

6 BR | 7.5 BA | \$12,500,000

12358ridge.com

PALM BEACH, FLORIDA



Renovated North End w/ Beach Parcel

4 BR | 4.5 BA | \$10,995,000

1435NorthOcean.com

PALM BEACH, FLORIDA



Renovated Waterfront Ibis Isle

4 BR | 3.5 BA | \$3,995,000

2160Ibis5.com

WEST PALM BEACH, FLORIDA



Renovated Northwood Pool House

4 BR | 4.5 BA | \$2,750,000

419-26street.com



TODD & FRANCES PETER

Senior Global Real Estate Advisors

561.281.0031 | francesandtodd.com

todd.peter@sothebys.realty



PALM BEACH BROKERAGE | [SOTHEBYSREALTY.COM/PALMBEACH](https://sothebysrealty.com/palmbeach)



JB Edwards

JB has a comprehensive knowledge of Florida real estate market. With his past experience, he is uniquely positioned to provide buyers and sellers alike with astute business acument, analysis and negotiatiing skills. JB is consistently recognized as a top producer.

JB EDWARDS

Global Real Estate Advisor/Broker Associate
561.370.4141 | jbedwardssirpb.com
james.edwards@sothebys.realty

PALM BEACH GARDENS, FLORIDA



Exquisite Contemporary

7 BR | 3.5 BA | \$17,495,000

PALM BEACH, FLORIDA



223 Atlantic Avenue 4B

2 BR | 2.0 BA | \$1,995,000
223atlantic.com

PALM BEACH, FLORIDA



2150 Ibis Isle Road PH 4

2 BR | 2.0 BA | \$1,800,000

PALM BEACH BROKERAGE | [SOTHEBYSREALTY.COM/PALMBEACH](https://sothebysrealty.com/palmbeach)



Ocean Club Residences & Marina C1.4 Paradise Island, The Bahamas



Samira Coleby
Estate Agent
+1 242.376.6248
Samira.Coleby
@SIRbahamas.com

Ocean Club Residences & Marina C1.4

3 BR | 3.5 BA | 3,422 SQ FT.

\$2,600,000

This attractively priced corner residence is a true gem, offering an abundance of features and amenities that promise a luxurious and comfortable lifestyle. The property boasts 3 bedrooms, 3.5 bathrooms, and an expansive 900 sq. ft. terrace overlooking the picturesque Montagu Bay.

SIRBAHAMAS.COM/ID/XLRP3K



Bahamas | Sotheby's
INTERNATIONAL REALTY

BAHAMAS SOTHEBY'S INTERNATIONAL REALTY | WINDSOR BUSINESS PARK, NASSAU, THE BAHAMAS | SIRBAHAMAS.COM

© 2023 Sotheby's International Realty. All Rights Reserved. Sotheby's International Realty® is a registered trademark and used with permission. Each Sotheby's International Realty office is independently owned and operated, except those operated by Sotheby's International Realty, Inc. The Sotheby's International Realty network fully supports the principles of the Fair Housing Act and the Equal Opportunity Act.



Sandcastle Exuma, The Bahamas



Jacqueline
Lightbourn
Estate Agent
+1 242.359.2225
Jacqueline.Lightbourn
@SIRbahamas.com

Sandcastle

6 BR | 5.0 BA | 3,650 SQ FT.
\$3,750,000

Sandcastle House is a 3,650 square foot home located on a generous 23,551 sf lot, perched on an enviously stunning beach and nestled amongst beautiful, lush green palms. 6 bedrooms and 5 bathrooms make this the ideal home for a large family and would also make a fruitful investment for anyone looking to enter the Vacation Rental market.

SIRBAHAMAS.COM/ID/C8VBXS



Bahamas | Sotheby's
INTERNATIONAL REALTY



BAHAMAS SOTHEBY'S INTERNATIONAL REALTY | WINDSOR BUSINESS PARK, NASSAU, THE BAHAMAS | SIRBAHAMAS.COM

© 2023 Sotheby's International Realty. All Rights Reserved. Sotheby's International Realty® is a registered trademark and used with permission. Each Sotheby's International Realty office is independently owned and operated, except those operated by Sotheby's International Realty, Inc. The Sotheby's International Realty network fully supports the principles of the Fair Housing Act and the Equal Opportunity Act.



New Heights Abaco, The Bahamas



Christopher Albury
Estate Agent
+.242.359.6885
Christopher.Albury
@SIRbahamas.com

New Heights

8 BR | 9.0 BA | 4,700 SQ FT.
\$2,950,000

New Heights is a luxurious, contemporary residence on the pristine island of Great Guana Cay in the Abacos. This modern 8-bedroom, 10-bathroom property boasts almost 4,700 sq. ft. of interior space and an additional 800 sq. ft. of outdoor living space under roof. With unobstructed panoramic views of the Atlantic Ocean, this turnkey property is the epitome of island living.

SIRBAHAMAS.COM/ID/SN5DN7



Bahamas | Sotheby's
INTERNATIONAL REALTY



BAHAMAS SOTHEBY'S INTERNATIONAL REALTY | GILLIAM STREET, HOPE TOWN, ABACO, THE BAHAMAS | SIRBAHAMAS.COM

© 2023 Sotheby's International Realty. All Rights Reserved. Sotheby's International Realty® is a registered trademark and used with permission. Each Sotheby's International Realty office is independently owned and operated, except those operated by Sotheby's International Realty, Inc. The Sotheby's International Realty network fully supports the principles of the Fair Housing Act and the Equal Opportunity Act.



Beach Villa, Rosewood at Baha Mar, The Bahamas

Nick Damianos
Estate Agent
+1 242.376.1841
Nick.Damianos
@SIRbahamas.com



Rosewood at Baha Mar

4 BR | 4.5 BA | 2,936 SQ FT.
\$9,900,000

Seamlessly blending contemporary design with island-inspired accents, this magnificent villa is infused with the carefree spirit of seaside living. The design exudes relaxed refinement with expansive living spaces and private bedrooms spread between two floors - and three unique terraces, totaling 2,936 sq. ft., to soak in the warmth of the Bahamian sun..

SIRBAHAMAS.COM/ID/KHCRM2



Bahamas | Sotheby's
INTERNATIONAL REALTY

The Extraordinary Villa Arte on Exclusive La Gorce Island



**Mirce (Miki)
Curkoski**
Global Real Estate
Advisor
786.395.2139
mirce.curkoski
@sothebysrealty.com



Albert Justo
Global Real Estate
Advisor
786.326.9613
albert.justo
@sothebysrealty.com

98 La Gorce Circle, Miami Beach

7 BR | 10.3 BA | 21,245 SQ FT.
\$75,000,000

Boasting an architectural concept and interior design by the Aquablue Group, the villa features astounding water features and an imposing entrance made of bronze, book-matched travertine, and Japanese white oak. Unparalleled attention to detail, with luxurious finishes in leather, marble, and handcrafted wall coverings by Italian artisans. LEED Gold-Certified home complete with insulated impact glass, a generator, expansive terraces, gym and spa, home theatre, an office, chef's kitchen, entertaining areas, marble wine cellar, 88-foot long cascading infinity-edge pool/jacuzzi, outdoor kitchen, a fire pit and much more. Newly completed in May 2023.

[SOTHEBYSREALTY.COM/ID/N9E99W](https://www.sothebysrealty.com/id/N9E99W)



ONE | **Sotheby's**
INTERNATIONAL REALTY

ONE SOTHEBY'S INTERNATIONAL REALTY | 119 WASHINGTON AVENUE #102 MIAMI BEACH, FL 33139 | [ONESOTHEBYSREALTY.COM](https://www.onesothebysrealty.com)

© 2023 Sotheby's International Realty. All Rights Reserved. Sotheby's International Realty® is a registered trademark and used with permission. Each Sotheby's International Realty office is independently owned and operated, except those operated by Sotheby's International Realty, Inc. The Sotheby's International Realty network fully supports the principles of the Fair Housing Act and the Equal Opportunity Act.