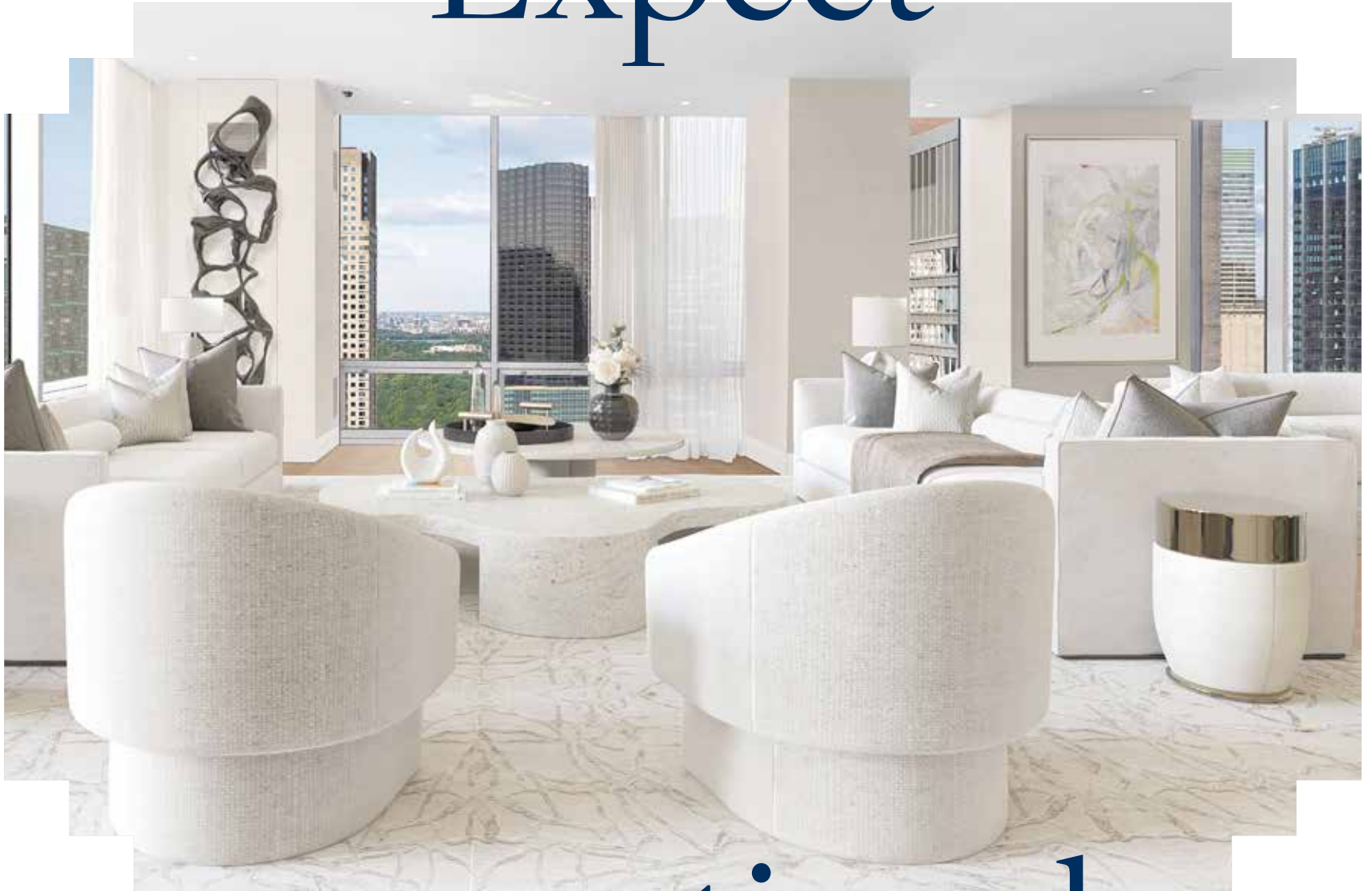


1 of 1

Expect



exceptional

New York, New York | Represented by Danielle Rivoir and Kevin Brown on page 31

Sotheby's
INTERNATIONAL REALTY

April 2025 | sothebysrealty.com



925 Park Avenue, 5/6C

5 BED | 4.5 BATH | New York, New York

\$8,450,000
925ParkAve5-6C.com

This rarely available 5 bedroom, 4.5 bath duplex defines perfection offering all the benefits and grandeur of townhouse living along with the conveniences and services of a distinguished, luxury Park Avenue cooperative. Soaring 9'10-to-10-foot ceilings, stunning hardwood floors and through the wall air conditioning are additional features throughout this extraordinary home. Simply stated, this incredible home, designed by renowned interior decorator, Alexa Hampton, has it all.

Triple Mint Designer Duplex on Park Avenue



Wendy Arriz
Senior Global Real Estate Advisor
Associate Broker | 917.361.5038
wendy.arriz@sothebys.realty



Contents

4	New York
45	New Jersey
55	Connecticut
60	Pennsylvania
62	Massachusetts
63	Massachusetts and New Hampshire
64	Rhode Island
65	South Carolina
71	South Carolina and Georgia
72	Georgia
74	Florida
81	Texas
84	Utah
85	Arizona
86	Nevada
88	California
90	The Bahamas
94	New Zealand





1130 Park Avenue, PH-A

New York, New York | \$9,000,000 1130ParkAvenuePHA.com

This masterfully renovated 3-bedroom, 3.5 bath penthouse residence showcases views of Park Avenue, the East River, Central Park, and the Manhattan skyline.



876 Park Avenue, 6S

New York, New York | \$4,750,000 876ParkAve6S.com

This highly desirable, one-of-a-kind home defines perfection with the ultimate features in luxury living: incredible views, grand proportions and prime location.



Wendy Arriz
Senior Global Real Estate Advisor
Associate Broker | 917.361.5038
wendy.arriz@sothebys.realty

Sotheby's International Realty - East Side Manhattan Brokerage | 650 Madison Avenue, 2nd Floor, New York, New York 10022 | sothebysrealty.com/nyc



Park Avenue Triple Mint Jewel

1110 Park Avenue, Penthouse Triplex
New York, New York

\$29,000,000

1110ParkAvePHTriplex.com

The Penthouse is a stunning 7,000 SF five bedroom, five and a half bath triplex residence featuring a 1,600 SF private rooftop complete with an endless swimming pool overlooking the Jackie Onassis Reservoir, an outdoor kitchen, gas fireplace and beautiful open city views. Additional outdoor features include a 221 SF balcony off the Living Room and nine Juliette Balconies throughout. Discreet keyed elevator opens directly into the elegant foyer leading to the spacious living and dining rooms boasting 14' ceilings and a beautifully designed gas fireplace. Double doors lead out onto the elegant balcony that offers sprawling views down Park Avenue as well as the iconic Manhattan skyline.

5 Bedrooms

5.5 Bathrooms

7,000± sq.ft



Eva Penson

Global Real Estate Advisor, Associate Broker

917.371.8511

eva.penson@sothebys.realty



The Field Team Advantage



#1 Sales Team in the U.S.
Sotheby's International Realty, Inc. 2024

TheFieldTeam.com

Nikki Field
Founder, The Field Team
Senior Global Real Estate Advisor, Associate Broker
212.606.7669 | Nikki.Field@Sothebys.Realty



Sotheby's International Realty - East Side Manhattan Brokerage | 650 Madison Avenue, 2nd Floor, New York, New York 10022 | sothebysrealty.com/nyc

The NEW 111W57 Quadplex 80



111 West 57th Street, Quadplex 80

5 BR | 6 Full 2 Half BATH | 11,480± Interior sq. ft. | 618± Exterior sq. ft. | Price Upon Request
Quadplex80.com

**Nikki Field, Benjamin Pofcher
& Jeanne Bucknam**

Associate Brokers

212.935.5757 | info@111W57.com

Sotheby's International Realty - East Side Manhattan Brokerage | 650 Madison Avenue, 2nd Floor, New York, New York | sothebysrealty.com/nyc

A Grand Duplex on Park Avenue



515 Park Avenue 36/37 | New York, New York

\$22,500,000

[515ParkAve36-37.com](https://www.515ParkAve36-37.com)

Serena Boardman

Senior Global Real Estate Advisor, Associate Broker

212.606.7611 | [serenaboardman.com](https://www.serenaboardman.com)

serena.boardman@sothebys.realty



Sotheby's International Realty - East Side Manhattan Brokerage | 650 Madison Avenue, 2nd Floor, New York, New York 10022 | [sothebysrealty.com/nyc](https://www.sothebysrealty.com/nyc)



Elegance at 740 Park Avenue

740 Park Avenue, 6/7D | New York, New York

\$28,000,000

[740ParkAve6-7D.com](https://www.740ParkAve6-7D.com)

Considered by many to be among the finest examples of pre-war apartment house architecture, 740 Park Avenue is defined by stately proportions and unsurpassed elegance. Drawn by Rosario Candela and Arthur Loomis Harmon in 1929, the plans for this coveted address remain a standard for gracefully functional design and serve still as inspiration for today's most sought-after buildings. Ideally located on East 71st Street and spanning over 7,000 square feet, this mansion-like residence is distinguished by its impressive scale, enduring elegance, sunlit interiors, and open and attractive outlooks.

5 Bedrooms

5 Bathrooms, 2 Half Baths

7,348± sq.ft



Kathryn Steinberg

Senior Global Real Estate Advisor,
Associate Broker | 212.606.7756
kathryn.steinberg@sothebys.realty

Serena Boardman

Senior Global Real Estate Advisor,
Associate Broker | 212.606.7611
serena.boardman@sothebys.realty



Sotheby's International Realty - East Side Manhattan Brokerage | 650 Madison Avenue, 2nd Floor, New York, New York 10022 | sothebysrealty.com/nyc



785 Park Avenue, Apartment 17BC

New York, New York | \$9,950,000

2 BD | 3 BA | 785ParkAve17BC.com



563 Park Avenue, Apartment 5/6W

New York, New York | \$8,950,000

3 BD | 3.5 BA | 563ParkAve5-6W.com



30 East 71st Street, Apartment 8B

New York, New York | \$8,900,000

3 BD | 4.5 BA | 30E71St8B.com



4 East 72nd Street, Apartment 3/4B

New York, New York | \$8,750,000

3 BD | 4.5 BA | 4E72St3-4B.com

Serena Boardman

Senior Global Real Estate Advisor, Associate Broker

212.606.7611 | serenaboardman.com

serena.boardman@sothebys.realty

Sotheby's International Realty - East Side Manhattan Brokerage | 650 Madison Avenue, 2nd Floor, New York, New York 10022 | sothebysrealty.com/nyc



765 Park Avenue, Apartment 12B

New York, New York | \$20,000,000

5 BD | 6.5 BA | 765ParkAve12B.com



13 East 94th Street

New York, New York | \$17,500,000

6 BD | 4 BA | 3 HB | 13E94St.com



1020 Fifth Avenue, 7th Floor

New York, New York | \$16,500,000

5 BD | 5.5 BA | 1020FifthAve7thFlr.com



781 Fifth Avenue, 18th Floor

New York, New York | \$16,000,000

6 BD | 7 BA | 2 HB | 781FifthAve18floor.com

Serena Boardman

Senior Global Real Estate Advisor, Associate Broker

212.606.7611 | serenaboardman.com

serena.boardman@sothebys.realty

Sotheby's International Realty - East Side Manhattan Brokerage | 650 Madison Avenue, 2nd Floor, New York, New York 10022 | sothebysrealty.com/nyc



9 East 96th Street, Penthouse

New York, New York | \$6,000,000

4 BD | 4 BA | 9E96StPH.com



570 Park Avenue, Apartment 6BD

New York, New York | \$5,600,000

5 BD | 5.5 BA | 570ParkAve6BD.com



50 East 79th Street, Penthouse A

New York, New York | \$4,950,000

2 BD | 3 BA | 50E79StPHA.com



812 Park Avenue, Apartment 11A

New York, New York | \$4,250,000

2 BD | 3 BA | 812ParkAve11A.com

Serena Boardman

Senior Global Real Estate Advisor, Associate Broker

212.606.7611 | serenaboardman.com

serena.boardman@sothebys.realty

Sotheby's International Realty - East Side Manhattan Brokerage | 650 Madison Avenue, 2nd Floor, New York, New York 10022 | sothebysrealty.com/nyc



730 Park Avenue, Apartment 9C

New York, New York | \$8,500,000

4 BD | 4 BA | 2 HB | 730Park9C.com



910 Fifth Avenue, Apartment 11BC

New York, New York | \$7,500,000

3 BD | 3 BA | 2 HB | 910FifthAve11BC.com



131 East 69th Street, 8th Floor

New York, New York | \$7,500,000

5 BD | 5.5 BA | 131E69St8thFlr.com



45 East 66th Street, Apartment 10W

New York, New York | \$5,175,000

3 BD | 3 BA | 45E66St10W.com

Serena Boardman

Senior Global Real Estate Advisor, Associate Broker

212.606.7611 | serenaboardman.com

serena.boardman@sothebys.realty

Sotheby's International Realty - East Side Manhattan Brokerage | 650 Madison Avenue, 2nd Floor, New York, New York 10022 | sothebysrealty.com/nyc



Trustworthy. Smart. Skilled.

My industry rankings, 20+ years in residential real estate, corporate law firm experience and exceptional ongoing client relationships and referrals demonstrate that working with me is the right choice for you...

- #2 Sotheby's International Realty, NYC 2024-2021
- #9 Sotheby's International Realty, Nationally 2023, 2022
- 10 years corporate transactional attorney
- Founding Co-Chair New York Residential Agent Continuum (NYRAC)

Follow me on INSTAGRAM
[@cathy.taub](https://www.instagram.com/cathy.taub)

<http://cathytaub.com/>

Cathy Taub
Senior Global Real Estate Advisor, Associate Broker
917.855.8466
cathy.taub@sothebys.realty



101 Central Park West, 2DE

New York, New York | \$8,250,000 | 101CPW2DE.COM

Rare 11-room, sun-flooded 4850 SF, 4 BR, 5.5 baths. Central Park views from 4 rms. WBF, flexible layout for elegant living. Pets OK. Great Gym. 24/7 white glove coop.



895 Park Avenue, 15C

New York, New York | \$6,850,000

5 BR | 5 BA | 895PARK15C.COM



225 West 86th Street, 709

New York, New York | \$5,900,000

4 BR | 3.5 BA | 225W86ST709.COM



Cathy Taub

Senior Global Real Estate Advisor, Associate Broker

917.855.8466

cathy.taub@sothebys.realty

Sotheby's International Realty - East Side Manhattan Brokerage | 650 Madison Avenue, 2nd Floor, New York, New York 10028 | sothebysrealty.com/nyc



75 Central Park West, 10D
New York, New York | \$4,185,000
3 BR | 2 BA | 75CPW10D.COM



12 West 72nd Street, 7DEF
New York, New York | \$3,750,000
4 BR | 3.5 BA | 12W72ST14DE.COM



115 Central Park West, 6K
New York, New York | \$3,600,000
4 BR | 3 BA | 115CPW6K.COM



115 Central Park West, 7J
New York, New York | \$2,500,000
2 BR | 2 BA | 115CPW7J.COM



12 West 72nd Street, 14DE
New York, New York | \$2,495,000
3 BR | 3 BA | 12W72ST14DE.COM



230 West 56th Street, 55D
New York, New York | \$1,995,000
1 BR | 1.5 BA | 230W56ST55D.COM



Cathy Taub
Senior Global Real Estate Advisor, Associate Broker
917.855.8466
cathy.taub@sothebys.realty



Elegance on the East River

435 East 52nd Street 13A | New York, New York

\$10,950,000

TheRiverHouse13A.com

Immediately upon entering this grand-scaled apartment one is captivated by the glorious, sweeping views of the East River from almost every room of this rarely available mint condition, 10 room residence, situated on a high floor in one of Manhattan's most prestigious buildings, the iconic River House. The apartment has the unique and rare amenity of a Lifetime Membership to the River Club, located inside the River House, which transfers to the new purchaser (an initiation fee applies if purchaser is not currently a River Club member) allowing a luxurious lifestyle including swimming pool, squash courts, tennis courts, fitness center, golf simulator, library, grand dining room and bar overlooking the East River, ballroom, guest rooms, and dinner catered to the apartment by the River Club.

3 Bedrooms

4.5 Bathrooms

5,315± sq.ft



Louise C. Beit
Senior Global Real Estate Advisor
Associate Broker | 917.544.5515
louise.beit@sothebys.realty





Majestic Central Park Views

1200 Fifth Avenue, 4A | New York, New York

\$5,950,000
[1200FifthAve4A.com](https://www.1200FifthAve4A.com)

Stunning Central Park views over Fifth Avenue, spectacular sunlight, and a gracious layout on a grand scale define this breathtakingly beautiful one-of-a-kind residence located in a rare pre-war Emery Roth condominium on Museum Mile. With majestic Central Park as its backdrop through new tilt and turn picture windows and boasting an exceptional 39 linear feet directly on Fifth Avenue, experience the magic of New York City's changing seasons from any one of the three principal rooms facing the park. Designed specifically for the current owners and the perfect combination of stately New York grandeur and comfortable elegance, this expansive 4-5-bedroom, 4-bathroom home spans over 3700 square feet and is ready for you to move right in.

5 Bedrooms
4 Bathrooms
3,700± sq.ft



Lisa Larson
Senior Global Real Estate Advisor
Associate Broker | 917.678.7042
lisa.larson@sothebys.realty





Classic New York Glamour

244 East 49th Street | New York, New York

\$7,200,000

244E49Street.com

244 East 49th Street is an opportunity for a discerning buyer to own the former long-term residence of iconic actress Katharine Hepburn. The epitome of New York glamour defines this gorgeous 19-foot-wide townhouse, which seamlessly blends the home's special architectural character with modern sensibilities. Boasting graciously scaled rooms, 6 fireplaces, approximately 4,600 square feet of meticulously finished interior space, and an enchanting 1,000 square foot south-facing rear garden, this gracious home stands four stories high with 4 bedrooms and 3.5 baths. Published in design magazines, this 1899-built house has been masterfully restored and renovated and praised for its elegant interiors and carefully selected luxury furnishings.

4 Bedrooms

3.5 Bathrooms

4,560± sq.ft



Lisa Larson
Senior Global Real Estate Advisor
Associate Broker | 917.678.7042
lisa.larson@sothebys.realty



Sotheby's International Realty - East Side Manhattan Brokerage | 650 Madison Avenue, 2nd Floor, New York, New York 10022 | sothebysrealty.com/nyc



115 Central Park West, 9A

New York, New York | \$4,600,000 | 115CPW-9A.com

The apartment features wonderful original details, generous room sizes, bright open exposures and a flexible layout.



40 East 78th Street, 5F

New York, New York | \$2,900,000

2 BD | 2 BA | 40E785F.com



175 East 79th Street, 3A

New York, New York | \$2,695,000

3 BD | 2 BA | 175E79th3A.com



Allison B. Koffman

Senior Global Real Estate Advisor
Associate Broker | 917.226.4320
allison.koffman@sothebys.realty



Juliette Janssens

Senior Global Real Estate Advisor
Associate Broker | 917.748.0118
juliette.janssens@sothebys.realty

Sotheby's International Realty - East Side Manhattan Brokerage | 650 Madison Avenue, 2nd Floor, New York, New York 10022 | sothebysrealty.com/nyc



857 Fifth Avenue, 7th Floor

New York, New York | \$7,250,000 857fifthave.com

Perfectly situated on the corner of 5th Avenue and 67th Street, this expansive 9 room home, complete with terrace, offers over 40 feet of frontage facing Central Park.



150 East 72nd Street, 7S

New York, New York | \$5,500,000 150E72nd7S.com

Stunning and light filled 3-Bedroom, 2.5-Bath, prewar condominium in the best Upper East Side location.



Allison B. Koffman
Senior Global Real Estate Advisor
Associate Broker | 917.226.4320
allison.koffman@sothebys.realty



Juliette Janssens
Senior Global Real Estate Advisor
Associate Broker | 917.748.0118
juliette.janssens@sothebys.realty

Sotheby's International Realty - East Side Manhattan Brokerage | 650 Madison Avenue, 2nd Floor, New York, New York 10022 | sothebysrealty.com/nyc



Leslie S. Modell

modellteam.com

Leslie S. Modell
Senior Global Real Estate Advisor, Associate Broker
O: 212.606.7668
LeslieS.Modell@Sothebys.Realty



181 East 65th Street, 27B
New York, New York | \$7,985,000
4 BD | 3.5 BA | 181E65St27B.com



181 East 65th Street, 5A
New York, New York | \$5,895,000
4 BD | 3 BA | 181East65Street5A.com

Sotheby's International Realty - East Side Manhattan Brokerage | 650 Madison Avenue, New York, New York | sothebysrealty.com/nyc



502 Park Avenue, 18D

New York, New York | \$4,895,000
3 BD | 3.5 BA | 502ParkAve18D.com



781 Fifth Avenue, 505

New York, New York | \$4,495,000
3 BD | 3.5 BA | 781FifthAve505.com



10 West 15th Street, 1027/1028

New York, New York | \$2,595,000
3 BD | 3 BA | 10W15ST1027-1028.com



130 West 30th Street, 10C

New York, New York | \$2,295,000
3 BD | 3 BA | 130W30St10C.com



301 East 50th Street, 9C

New York, New York | \$2,275,000
2 BD | 2.5 BA | 301E50St9C.com



435 East 65th Street, 2CD

New York, New York | \$1,195,000
3 BD | 2 BA | 435E65St2CD.com



Leslie S. Modell

Senior Global Real Estate Advisor, Associate Broker
O: 212.606.7668
LeslieS.Modell@Sothebys.Realty | modellteam.com



180 West End Avenue

180 West End Avenue 29M New York, New York

\$1,725,000
180WEA29M.com

Space, light, and storage make this high-floor home at 180 West End Avenue effortlessly livable.

Enjoy stunning Hudson River and Upper West Side views from your private terrace. Inside, custom-fitted storage, beautiful wood floors, and a gracious layout create a home that feels both expansive and inviting.

29M features one of Lincoln Towers' largest two-bedroom, two-bath layouts, with a windowed dining alcove that easily converts into a third bedroom or home office.

MORE ON 180WEA29M.COM

2 Bedrooms
2 Bathrooms
1,300± sq.ft



Colin Montgomery
Associate Broker
M: 646.319.3114 | O: 212.606.7620
Colin.Montgomery@Sothebys.Realty | colinmontgomery.com





Stunning Carnegie Hill Apartment

19 East 88th Street, 15G | New York, New York

\$3,500,000

19E88St15G.com

Located in one of Carnegie Hill's most iconic Art Deco buildings, this stunning, large, 5-room apartment is flooded with sunlight and has open views of Central Park from every room. One enters the apartment through a foyer leading into a striking open-plan living room/dining room with 11-foot ceilings, an unusual corner wood burning fireplace and access to a fully renovated kitchen and a 26-foot long terrace facing Madison Avenue. Also accessed through the foyer are the two large, high-ceilinged, bedrooms. The primary bedroom faces north and west, has a small dressing room, en suite bath, and a narrow terrace with direct park views.

2 Bedrooms

2 Bathrooms

Park Views



Armin B. B. Allen

Senior Global Real Estate Advisor
Associate Broker | 212.606.7696
armin.allen@sothebys.realty



Kathryn Steinberg

Senior Global Real Estate Advisor
Associate Broker | 212.606.7756
kathryn.steinberg@sothebys.realty





188 East 70th Street, 18A

New York, New York | \$2,495,000

2 BD | 2.5 BA | 188E70St18A.com



7 Gramercy Park West, 5D

New York, New York | \$1,999,000

2 BD | 2 BA | 7GPW-5D.com



188 East 70th Street, 6-D

New York, New York | \$1,195,000

1 BD | 1.5 BA | 188E70St6D.com



188 East 70th Street, 18B

New York, New York | \$750,000

1 BD | 1 BA | 188E70St18B.com



Esther Bier

Licensed Salesperson

M: 917.282.0598 | esther.bier@sothebys.realty

estherbier.com

Sotheby's International Realty - East Side Manhattan Brokerage | 650 Madison Avenue, New York, New York | sothebysrealty.com/nyc

© 2025 Sotheby's International Realty. All Rights Reserved. Sotheby's International Realty® is a registered trademark and used with permission. Each Sotheby's International Realty office is independently owned and operated, except those operated by Sotheby's International Realty, Inc. All offerings are subject to errors, omissions, changes including price or withdrawal without notice. Equal Housing Opportunity.



1220 Park Avenue, 13B

New York, New York | \$9,500,000 | 1220ParkAve13B.com

With five-bedrooms and four-and-a-half-baths, this prewar cooperative apartment offers a perfect blend of sophisticated grandeur and modern comfort.



3 East 77th Street, 12D

New York, New York | \$1,200,000 | 3E77St12D.com

This perfectly located one-bedroom, one-bath cooperative apartment is ideal for full-time residents as well as those seeking a pied-a-terre.

The AMM Team

Senior Global Real Estate Advisors
ammteam@sothebys.realty
212.606.4130 | ammnewyork.com

Sotheby's International Realty - East Side Manhattan Brokerage | 650 Madison Avenue, New York, New York | sothebysrealty.com/nyc



Nicole Beauchamp

Nikki Beauchamp, a Manhattan native with over two decades of experience, is a globally recognized real estate advisor specializing whose clientele—sophisticated buyers, sellers, and investors—rely upon her insightful,discrete and elevated approach to navigating New York City's ever-evolving real estate market.

At the core of Nikki's practice is a commitment to trust, loyalty, and exceptional service. Her business is built on long-standing client relationships and an elite global referral network of leading agents who rely on her expertise and sound judgment.

With a data-informed, bespoke strategy for every transaction, Nikki combines deep local market intelligence with international reach, strategic marketing, and masterful negotiation. Luxury is innately personal—and so are the solutions delivered to clients. Sellers benefit from distinctive positioning and global exposure. Buyers gain access to curated opportunities and tailored advisory, all grounded in clarity, precision, and strategic foresight.

Work with a seasoned advisor known for excellence, discretion, and results—your trusted advisor in navigating the complexities of real estate in New York City and beyond.

Trusted Advisor
Knowledge Broker
Global Perspective

NikkiSellsNYC.com

Nicole Beauchamp
Associate Broker
Nicole.Beauchamp@Sothebys.Realty
212.606.4152





Classic Elegance with Modern Convenience

130 East 67th Street, 3B New York, New York

\$1,900,000

[130E67St3B.com](https://www.130E67St3B.com)

Classic elegance meets modern living in this corner 2-bedroom, 2-bathroom co-op at 130 East 67th Street. Gracious living room, spacious dining room & chef's kitchen with pantry and vented washer/dryer, with serene tree-lined views, this refined home offers 9.5' ceilings, hardwood floors, and custom closets. This landmark Italianate building offers white-glove service, private storage, and is pet- and pied-à-terre-friendly with 70% financing allowed—just moments from Central Park, Park Avenue Armory, museums, fine dining, and premier shopping.

2 Bedrooms

2 Bathrooms

2 Fireplaces



Nicole Beauchamp

Associate Broker

212.606.4152 | Nicole.Beauchamp@Sothebys.Realty

[nikkisellsnyc.com](https://www.nikkisellsnyc.com)





27-04 Astoria Boulevard

27-04 Astoria Boulevard, Queens, New York

\$9,250,000
27-04AstoriaBlvd.com

The Vitoria at 27-04 Astoria Boulevard is a boutique collection of ten thoughtfully designed 1-bedroom smart homes in vibrant Astoria, blending sophisticated design with cutting-edge technology. Residences feature floor-to-ceiling windows, Brilliant's Smart Home Control system, Italian Casa Mia cabinetry, Samsung appliances, radiant heated bathroom floors, private outdoor spaces and conveniences like Bosch washer/dryers and Ring doorbell cameras. Building amenities include a rooftop deck with 360-degree Manhattan skyline views ,private and bike storage, a first floor space suitable to become a potential gym or co-working space. Ideally located near top eateries, cultural landmarks, and transit - minutes to Manhattan and area airports, The Vitoria offers both comfort and connectivity. Rent roll and expenses available upon request.

Manhattan Skyline Views,
Smart Tech, and More:
Invest in The Vitoria



Nicole Beauchamp
Associate Broker
212.606.4152 | Nicole.Beauchamp@Sothebys.Realty
nikkisellsnyc.com





340 West 23rd Street

New York, New York | \$19,995,000
6 BD | 6 BA | 2 HB | 340West23rd.com

Jaime Richichi
516.749.5242 | jaime.richichi@sothebys.realty



56 Leonard Street, 47W

New York, New York | \$17,995,000
4 BD | 4.5 BA | 56LeonardSt47W.com

Viktoriya Bastiyali
917.991.5894 | viktoriya.bastiyali@sothebys.realty



641 Fifth Avenue, 37/38

New York, New York | \$14,000,000
4 BD | 4.5 BA | 641FifthAve37-38.com

Danielle Rivoir | Kevin Brown
202.820.4000 | danielle.rivoir@sothebys.realty



25 Columbus Circle, 59D

New York, New York | \$8,495,000
2 BD | 3 BA | 25CC59D.com

Elizabeth L. Sample | Brenda Powers
917.364.2371 | elizabeth.sample@sothebys.realty



930 Park Avenue, 2N

New York, New York | \$8,200,000
4 BD | 3BA | 2 HB | 930ParkAve2N.com

Sheila Ellis | Patricia A. Wheatley
917.579.1112 | sheila.ellis@sothebys.realty



181 East 65th Street, 27B

New York, New York | \$7,985,000
4 BD | 3.5 BA | 181E65St27B.com

Leslie S. Modell
212.606.7668 | leslies.modell@sothebys.realty

Sotheby's International Realty - East Side Manhattan Brokerage | 650 Madison Avenue, 2nd Floor, New York, New York 10022 | sothebysrealty.com/nyc



15 West 53rd Street, 49BC

New York, New York | \$5,500,000

2 BD | 3 BA | 15W53St49BC.com

Yi R. Chen

917.325.1998 | yi.chen@sothebys.realty



875 Park Avenue, 7A

New York, New York | \$4,995,000

4 BD | 3 BA | 875ParkAve7A.com

Vannessa A Kaufman

917.865.8065 | vannessa.kaufman@sothebys.realty



975 Park Avenue, 11B

New York, New York | \$4,950,000

3 BD | 3 BA | 975ParkAve11B.com

Eva J Mohr

917.518.2227 | eva.mohr@sothebys.realty



641 Fifth Avenue, 22Q

New York, New York | \$3,100,000

2 BD | 2.5 BA | 641FifthAve22Q.com

Eva Penson

917.371.8511 | eva.penson@sothebys.realty



170 East 87th Street, W16A

New York, New York | \$2,990,000

3 BD | 3 BA | 170E87StW16A.com

Anne Aransaenz

917.612.9955 | anne.aransaenz@sothebys.realty



550 Park Avenue, 16AE

New York, New York | \$2,100,000

2 BD | 2 BA | 550ParkAve16AE.com

Olivia Hoge

646.591.9308 | olivia.hoge@sothebys.realty

Sotheby's International Realty - East Side Manhattan Brokerage | 650 Madison Avenue, 2nd Floor, New York, New York 10022 | sothebysrealty.com/nyc



876 Broadway, 3rd Floor
New York, New York | **\$4,600,000**
2 BD | 2.5 BA | 876Broadway3.com



420 West 25th Street, PHA
New York, New York | **\$4,200,000**
2 BD | 3.0 BA | 420W25thPHA.com



111 Fourth Avenue, 9CD
New York, New York | **\$3,495,000**
2 BD | 2 BA | 1114th9CD.com



230 Central Park South, 3AB
New York, New York | **\$2,995,000**
1 BD | 2 BA | 230CPS3AB.com



415 Central Park West, 14D
New York, New York | **\$2,400,000**
2 BD | 2.5 BA | 415CPW14D.com



111 Fourth Avenue, 7I
New York, New York | **\$1,850,000**
2 BD | 1 BA | 1114th7I.com



Glenn J Norrgard
Senior Global Real Estate Advisor, Associate Broker
M: 917.822.6840 | glenn.norrgard@sothebys.realty
glennnorrgard.com



405 West 23rd Street, PHA

New York, New York | \$3,590,000 405West23rdStPHA.com

With 10 foot ceilings and 4 terraces, this 2-bedroom, 2-bathroom, Chelsea home offers an unparalleled living experience.



320 West 89th Street, 3CD

New York, New York | \$2,295,000 320West89thSt3CD.com

Experience the perfect blend of form and function in this newly combined and meticulously renovated 3-bedroom, 2-bathroom home with a home office.



Sandra Cohen
Global Real Estate Advisor, Associate Broker
M: 917.412.4918
sandra.cohen@sothebys.realty

Sotheby's International Realty - Downtown Manhattan Brokerage | 149 Fifth Avenue, 4th Floor, New York, New York | sothebysrealty.com/nyc

A Rare West Village Jewel

302 West 12th Street, 11E New York, New York

\$4,995,000

302W12St11E.com

Live in luxury with this newly renovated, two-bedroom stunning apartment in one of the West Village's most sought-after prewar condominiums. With sweeping downtown skyline views from three exposures—south, east, and west—you'll experience NYC living at its finest. This rare two-bedroom opportunity features an oversized living room, offering plenty of space for both dining and lounging, all centered around a beautiful wood-burning fireplace. Timeless prewar charm meets modern elegance with beamed ceilings, period moldings, and rich oak hardwood floors. The brand-new, windowed kitchen is a chef's dream, featuring high-end custom cabinetry, striking stone... MORE ON 302W12ST11E.com

2 Bedrooms

2 Bathrooms

\$4,995,000



The Ingalls O'Rourke Team
Real Estate Professionals
O: 212.431.2457 | brad.ingalls@sothebys.realty
ingallsorourke.com



Sotheby's International Realty - Downtown Manhattan Brokerage | 149 Fifth Avenue, 4th Floor, New York, New York | sothebysrealty.com/nyc



Jack Isquith: Mastering the Art of Real Estate

Combining emotional intelligence, data-driven analytical ability, and tenacious negotiating skills, Jack Isquith is a premier residential real estate agent in New York City.

JackIsquith.com

Jack Isquith
Licensed Salesperson
M: 610.306.6939 | O: 212.431.2440
Jack.Isquith@Sothebys.Realty



341 West 87th Street, 1F

New York, New York | Price Available Upon Request

STUDIO | 1 BA | 341West87thSt1F.com



5 Tudor City Place 1532

New York, New York | Price Available Upon Request

1 BD | 1 BA | 5TudorCityPl1532.com

Sotheby's International Realty - Downtown Manhattan Brokerage | 149 Fifth Avenue, 4th Floor, New York, New York | sothebysrealty.com/nyc



212 Fifth Avenue, 17A

New York, New York | \$24,500,000

4 BD | 4.5 BA | 212FifthAve17A.com

Matthew J. Perceval | Mara Flash Blum | Nikki Field
646.284.8048 | Matt.Perceval@Sothebys.Realty



235 East 31st Street

New York, New York | \$9,750,000

6 BD | 7 BA | 235East31St.com

Jane Z. Forman
917.952.5341 | Jane.Forman@Sothebys.Realty



36 West 89th Street

New York, New York | \$5,900,000

9 BD | 9.5 BA | 36West89thStreet.com

Michael Sieger | Jonathan Schupak
917.533.8599 | Michael.Sieger@Sothebys.Realty



317 West 89th Street 7E

New York, New York | \$5,695,000

4 BD | 3 BA | 317West89thSt7E.com

Enjo Laura Hong
917.697.1634 | Laura.Hong@Sothebys.Realty



30 Front Street, 17F

Brooklyn, New York | \$5,250,000

3 BD | 2.5 BA

The Heyman-Cupolo Team
646.431.5764 | TheHeymanTeam@Sothebys.Realty



200 Water Street, PHB

Brooklyn, New York | \$4,550,000

2 BD | 2 BA | 200WaterPHB.com

The Heyman-Cupolo Team
646.431.5764 | TheHeymanTeam@Sothebys.Realty

Sotheby's International Realty - Downtown Manhattan Brokerage | 149 Fifth Avenue, 4th Floor, Brooklyn, New York | sothebysrealty.com/nyc



35 Sutton Place, 3C

New York, New York | \$3,100,000
3 BD | 4.5 BA | 35SuttonPl3C.com

Anu Banerji
917.292.7063 | Anu.Banerji@Sothebys.Realty



16 West 40th Street, 20C

New York, New York | \$2,999,999
2 BD | 2.5 BA | TheBryant20C.com

Mara Flash Blum | Andrew Harris
917.607.7456 | Maraflash.Blum@Sothebys.Realty



105 Fifth Avenue, 7A

New York, New York | \$2,350,000
2 BD | 2 BA | 105Fifth7A.com

Jeremy V. Stein | Jennifer Henson
917.854.4411 | Jeremy.Stein@Sothebys.Realty



360 West 22nd Street, 17E

New York, New York | \$2,000,000
2 BD | 2 BA | 360West22ndSt17E.com

Donald Cantasano
917.405.8578 | Donald.Cantasano@Sothebys.Realty



2 River Terrace, 3F

New York, New York | \$1,290,000
1 BD | 1.5 BA | 2RiverTerrace3F.com

Barbara Ireland
917.691.4230 | Barbara.Ireland@Sothebys.Realty



60 West 20th Street, 4D

New York, New York | \$1,200,000
LOFT | 1 BA | 60West20thSt4D.com

Lena Datwani | Anu Banerji
917.476.9797 | Lena.Datwani@Sothebys.Realty

Sotheby's International Realty - Downtown Manhattan Brokerage | 149 Fifth Avenue, 4th Floor, New York, New York | sothebysrealty.com/nyc



Julia B
Fee

Sotheby's
INTERNATIONAL REALTY



60 Ocean Avenue

Larchmont, New York 10538

Where Classic Blends with Modern Beauty

Commanding a prime position in coveted Larchmont Manor, 60 Ocean Avenue is an impeccably reimagined Colonial Revival residence that effortlessly blends timeless architectural grandeur with contemporary luxury.

A newly rebuilt, expansive wraparound porch welcomes you home—offering an inviting space to savor a quiet afternoon, catch up with friends, or enjoy a peaceful swing in the hammock.

6 Bedrooms

4.2 Bathrooms

5,585 SqFt



Lisa Sangster
Licensed Real Estate Salesperson
lisa.sangster@juliabfee.com
914.484.4342

Mimi Magarelli
Licensed Real Estate Salesperson
mimi.magarelli@juliabfee.com
914.715.3511

1910 Palmer Avenue, Larchmont | Larchmont Brokerage | 914.834.0270 | juliabfee.com

© 2025 Sotheby's International Realty. All Rights Reserved. Sotheby's International Realty® is a registered trademark and used with permission. Each Sotheby's International Realty office is independently owned and operated, except those operated by Sotheby's International Realty, Inc. All offerings are subject to errors, omissions, changes including price or withdrawal without notice. Equal Housing Opportunity.



32 Pheasant Close South

Southampton, New York | \$9,450,000 32pheasantclose.com

With a large formal dining room and a sunny primary suite, this 5 bedroom, 4F /2H bathroom, Southampton Village home is made for family gatherings and luxurious living.



338 North Main Street

Southampton, New York | \$3,750,000 338northmain.com

With a 1,000± sq.ft. attached studio and 1.04 acres±, this 4-bedroom, 3-bathroom Southampton Village home is perfect for elegant entertaining.



Pat Petrillo
Associate Broker
516.356.5136
pat.petrillo@sothebys.realty



Dawn Petrillo
Licensed Salesperson
631.278.9578
dawn.petrillo@sothebys.realty

Sotheby's International Realty - Southampton Brokerage | 50 Nugent Street, Southampton, New York | sothebysrealty.com

Unparalleled Oceanfront Elegance Modern Luxury Masterpiece



1550 Meadow Lane Southampton, New York

\$27,500,000

1550meadowlane.com



Harald Grant
Associate Broker
516.527.7712
harald.grant@sothebysrealty.com



Bruce Grant
Licensed Salesperson
516.840.7034
bruce.grant@sothebysrealty.com



Sotheby's International Realty - Southampton Brokerage | 50 Nugent Street, Southampton, New York | sothebysrealty.com



84 Georgica Close Road

East Hampton, New York | \$29,950,000 | 84georgicaclose.com

This dramatic contemporary features a crisp, bright-white design with walls of windows overlooking 2.4± acres leading to 578± feet of direct frontage on Georgica Pond.



173 Davids Lane

Water Mill, New York | \$13,995,000

8 BD | 9.5 BA | 1.6± Acres | 173davidslane.com

95 Jobs Lane

Bridgehampton, New York | \$9,000,000

4 BD | 4 BA | 1.6± Acres | 95jobslane.com



Beate V. V. Moore
Associate Broker
516.527.7868
beate.moore@sothebys.realty

Sotheby's International Realty - Bridgehampton Brokerage | 2446 Main Street, P.O. Box 1799, Bridgehampton, New York | sothebysrealty.com

© 2025 Sotheby's International Realty. All Rights Reserved. Sotheby's International Realty® is a registered trademark and used with permission. Each Sotheby's International Realty office is independently owned and operated, except those operated by Sotheby's International Realty, Inc. All offerings are subject to errors, omissions, changes including price or withdrawal without notice. Equal Housing Opportunity.

Historic Hamptons Home on 2.8± Acres in the Heart of East Hampton Village



64 Huntting Lane East Hampton, New York

\$17,500,000

64HunttingLane.com



Cindy A Shea
Associate Broker
631.680.3079
cindy.shea@sothebys.realty



Leslie Reingold
Licensed Salesperson
917.362.5375
leslie.reingold@sothebys.realty



Sotheby's International Realty - Bridgehampton Brokerage | 2446 Main Street, P.O. Box 1799, Bridgehampton, New York | sothebysrealty.com



Representing The Hampton's Finest Offerings

With over two decades of real estate experience in the Hamptons, Angela has consistently ranked in the top 1% of all Anywhere Real Estate Inc. sales associates nationwide. She began working with Sotheby's International Realty after 11 years of successful leadership as the Executive Vice President of a boutique real estate agency in Bridgehampton. Her vast knowledge regarding residential real estate has earned her the title of Senior Global Estate Advisor. Angela's ability to instinctively match buyers and sellers has created a large following for her. For over 25 years she has kept clients attuned to the most current trends.

hamptonsrealestateagent.com

Angela Boyer-Stump
Licensed Salesperson
917.207.7777
angela.boyer@sothebys.realty



20 Winding Way

Water Mill, New York | \$3,995,000
4 BD | 2.5 BA | 20windingway.com



652 Noyac Path

Water Mill, New York | \$5,750,000
6 BD | 6.0 BA | 652noyac.com



33 Bridgefield Road

Bridgehampton, New York | \$8,000,000
1.8± Acres | 33bridgefield.com



Ward
Wight

Sotheby's
INTERNATIONAL REALTY



Serving the Beautiful Jersey Shore

After a successful career as a real estate and land use attorney in the home building industry, Michael has reinvented himself as a top producing trusted real estate advisor. He looks forward to partnering with you to enhance your lifestyle at the beautiful Jersey Shore.

Michael Skea
Broker Associate
732.272.5898 Cell
mskea@wardwightsir.com



New Construction | 327 South Boulevard

Spring Lake, NJ | \$5,500,000

7 BD | 6/2 BA | sothebysrealty.com/id/QPF6EF



Ward Wight Sotheby's International Realty | 1117 3rd Avenue, Spring Lake, NJ 07762 | wardwight.com

© 2025 Sotheby's International Realty. All Rights Reserved. Sotheby's International Realty® is a registered trademark and used with permission. Each Sotheby's International Realty office is independently owned and operated, except those operated by Sotheby's International Realty, Inc. All offerings are subject to errors, omissions, changes including price or withdrawal without notice. Equal Housing Opportunity.



Ward
Wight

Sotheby's
INTERNATIONAL REALTY



Marketing & Selling the Jersey Shore at the Highest Level

Ward Wight Sotheby's International Realty is one of the most highly recognized, well respected full service Brokerages on the the Jersey Shore. Our team of local market experts takes great pride in providing our valued clients with the highest levels of representation, marketing and service. We are proud to be the local market leaders in our primary markers on the beautiful Jersey Shore.

Offices located in
Asbury Park, Manasquan,
Sea Girt and Spring Lake



Asbury Park 732.775.8500

Manasquan 732.223.2266

Sea Girt 732.449.5959

Spring Lake 732.449.3322

Ward Wight Sotheby's International Realty | 206 E Main Street, Manasquan, NJ | wardwight.com

© 2025 Sotheby's International Realty. All Rights Reserved. Sotheby's International Realty® is a registered trademark and used with permission. Each Sotheby's International Realty office is independently owned and operated, except those operated by Sotheby's International Realty, Inc. All offerings are subject to errors, omissions, changes including price or withdrawal without notice. Equal Housing Opportunity.



Ward
Wight

Sotheby's
INTERNATIONAL REALTY



1111 Bangs Avenue

Asbury Park, NJ | \$695,000

5 BD | 3/1 BA | sothebysrealty.com/id/CQG9RB

Joseph Scheeler Broker Associate

201.679.7614 jscheeler@wardwightsir.com



1101 Ocean Avenue Penthouse D

Asbury Park, NJ | \$42,500 Per Month

3 BD | 3/2 BA | sothebysrealty.com/id/W9ZGJK

Mark Bengston Sales Associate

917.886.7245 mbengston@wardwightsir.com



805 Ashley Avenue

Brielle, NJ | \$995,999

3 BD | 2 BA | sothebysrealty.com/id/CFJJDG

Spring Lake Office

732.449.3322



316 Salem Avenue

Spring Lake, New Jersey | \$2,595,000

4 BD | 3 BA | sothebysrealty.com/id/5EDBXY

Mary Jane Pierce Broker Associate

732.492.2974 mjpierce@wardwightsir.com



11 Union Avenue

Spring Lake, NJ | \$8,295,000

6 BD | 7 BA | sothebysrealty.com/id/PNKRVS

Kerry Patterson Sales Associate

917.576.2191 kpatterson@wardwightsir.com



212 Vroom Avenue

Spring Lake, NJ | \$7,500,000

7 BD | 6/2 BA | sothebysrealty.com/id/63PKG2

Michael Skea Broker Associate

732.272.5898 mskea@wardwightsir.com

Ward Wight Sotheby's International Realty | 521 Cookman Avenue, Asbury Park, NJ | wardwight.com

© 2025 Sotheby's International Realty. All Rights Reserved. Sotheby's International Realty® is a registered trademark and used with permission. Each Sotheby's International Realty office is independently owned and operated, except those operated by Sotheby's International Realty, Inc. All offerings are subject to errors, omissions, changes including price or withdrawal without notice. Equal Housing Opportunity.



Ward
Wight

Sotheby's
INTERNATIONAL REALTY

Every home is one of a kind



At the Jersey Shore, Ward Wight Sotheby's International Realty offers unrivaled service, unmatched exposure and unprecedented representation, resulting in maximum exposure for your home. True Market value will only be achieved when your home is professionally marketed by a local market leader. Yes, with whom you list your home matters, now more than ever!

Asbury Park 732.775.8500

Manasquan 732.223.2266

Sea Girt 732.449.5959

Spring Lake 732.449.3322

Ward Wight Sotheby's International Realty | 206 E Main Street, Manasquan, NJ | wardwight.com

© 2025 Sotheby's International Realty. All Rights Reserved. Sotheby's International Realty® is a registered trademark and used with permission. Each Sotheby's International Realty office is independently owned and operated, except those operated by Sotheby's International Realty, Inc. All offerings are subject to errors, omissions, changes including price or withdrawal without notice. Equal Housing Opportunity.



Callaway
Henderson

Sotheby's
INTERNATIONAL REALTY

A Princeton Treasure Close to Town and the University



15 Hodge Road | Princeton, New Jersey 08540

The restoration of Grover Cleveland's "Westland" brought plaster-detailed ceilings, carved mantels and oversized windows back to their original magnificence, yet this gloriously bright home in Princeton's Western Section supports leisurely living with large, cheerful spaces and a renovated pool. Just a 50-mile drive or an hour train ride from New York City. \$5,750,000

callawayhenderson.com/id/MFCZ2N



Maura Mills

Sales Associate

609.947.5757

mmills@callawayhenderson.com



Callaway Henderson Sotheby's International Realty | 4 Nassau Street, Princeton, NJ 08542 | 609.921.1050 | callawayhenderson.com

© 2025 Sotheby's International Realty. All Rights Reserved. Sotheby's International Realty® is a registered trademark and used with permission. Each Sotheby's International Realty office is independently owned and operated, except those operated by Sotheby's International Realty, Inc. All offerings are subject to errors, omissions, changes including price or withdrawal without notice. Equal Housing Opportunity.

SOTHEBY'S INTERNATIONAL REALTY

49



70 Cleveland Lane

Princeton, NJ | \$4,950,000

6 BD | 8/3 BA | 1.19 AC | ch-sir.com/id/D4BT85

Judson Henderson Broker of Record

609.651.2226 jhenderson@callawayhenderson.com



1742 Stuart Road West

Princeton, NJ | \$4,650,000

6 BD | 7/1 BA | 2.87 AC | ch-sir.com/id/H4SBP3

Judson Henderson Broker of Record

609.651.2226 jhenderson@callawayhenderson.com



272 Carter Road

Lawrence Township, NJ | \$4,250,000

5 BD | 6/2 BA | 4.76 AC | ch-sir.com/id/K5BBW8

Susan A. Cook Sales Associate

609.577.9959 scook@callawayhenderson.com



111 East Prospect Street

Hopewell Township, NJ | \$3,750,000

4 BD | 4 BA | 59 AC | ch-sir.com/id/D7LVEP

Jennifer E. Curtis Broker Associate

609.610.0809 jcurtis@callawayhenderson.com



240 Library Place

Princeton, NJ | \$3,750,000

7 BD | 7/1 BA | 1.05 AC | ch-sir.com/id/4ZG8ZZ

Maura Mills Sales Associate

609.947.5757 mmills@callawayhenderson.com



94 North Road

Princeton, NJ | \$3,695,000

5 BD | 4/3 BA | 3.37 AC | ch-sir.com/id/D6KSKK

Mark Davies Broker Associate

215.248.2727 mdavies@callawayhenderson.com



155 Hodge Road

Princeton, NJ | \$3,500,000

5 BD | 4/1 BA | 0.76 AC | ch-sir.com/id/TPLBX5

Maura Mills Sales Associate

609.947.5757 mmills@callawayhenderson.com



31 Westerly Road

Princeton, NJ | \$3,250,000

5 BD | 4/2 BA | 0.53 AC | ch-sir.com/id/TRGNHP

Maura Mills Sales Associate

609.947.5757 mmills@callawayhenderson.com



711 Avery Lane

Princeton, NJ | \$2,999,000

3 BD | 3/1 BA | ch-sir.com/id/32JNBT

Judson Henderson Broker of Record

609.651.2226 jhenderson@callawayhenderson.com

Callaway Henderson Sotheby's International Realty | 4 Nassau Street, Princeton, NJ 08542 | 609.921.1050 | callawayhenderson.com



Callaway
Henderson

Sotheby's
INTERNATIONAL REALTY



960 Sergeantsville Road

Delaware Township, NJ | \$2,995,000

3 BD | 1/1 BA | 204.36 AC | ch-sir.com/id/HFEJMJ

Russell Alan Poles Broker Associate
908.797.6765 rpoles@callawayhenderson.com



8 Garrett Lane

Princeton, NJ | \$2,975,000

5 BD | 4/1 BA | 3.23 AC | ch-sir.com/id/F3E5HR

Judson Henderson Broker of Record
609.651.2226 jhenderson@callawayhenderson.com



606 Snowden Lane

Princeton, NJ | \$2,950,000

5 BD | 5/2 BA | 1.5 AC | ch-sir.com/id/TXB3N9

Kimberly A. Rizk Sales Associate
609.203.4807 krizk@callawayhenderson.com



152 Westcott Road

Princeton, NJ | \$2,950,000

4 BD | 6/1 BA | 0.41 AC | ch-sir.com/id/SYZCVB

Deborah Peel Sales Associate
609.903.2768 dpeel@callawayhenderson.com



81 Chambers Street

Princeton, NJ | \$2,925,000

3 BD | 3/1 BA | ch-sir.com/id/BLDWE6

Judson Henderson Broker of Record
609.651.2226 jhenderson@callawayhenderson.com



124 Spruce Street

Princeton, NJ | \$2,380,000

5 BD | 4/1 BA | 0.13 AC | ch-sir.com/id/H8DYXF

Maura Mills Sales Associate
609.947.5757 mmills@callawayhenderson.com



13 East Shore Drive

Hopewell Township, NJ | \$2,200,000

6 BD | 5/1 BA | 3.35 AC | ch-sir.com/id/GZX5SK

Sylmarie Trowbridge Sales Associate
917.386.5880 syltrowbridge@ch-sir.com



22 Paul Robeson Place

Princeton, NJ | \$2,200,000

3 BD | 3/1 BA | ch-sir.com/id/E7H3L2

Mark Davies Broker Associate
215.248.2727 mdavies@callawayhenderson.com



348 Rosemont Ringoes Road

Delaware Township, NJ | \$2,000,000

5 BD | 5/2 BA | 6.45 AC | ch-sir.com/id/YYJC8X

Deborah T. Carter Broker Associate
908.303.4320 dcarter@callawayhenderson.com

Callaway Henderson Sotheby's International Realty | 4 Nassau Street, Princeton, NJ 08542 | 609.921.1050 | callawayhenderson.com

© 2025 Sotheby's International Realty. All Rights Reserved. Sotheby's International Realty® is a registered trademark and used with permission. Each Sotheby's International Realty office is independently owned and operated, except those operated by Sotheby's International Realty, Inc. All offerings are subject to errors, omissions, changes including price or withdrawal without notice. Equal Housing Opportunity.



76 Battle Road

Princeton, NJ | \$1,895,000

5 BD | 3/1 BA | 0.53 AC | ch-sir.com/id/38HX73

Maura Mills Sales Associate

609.947.5757 mmills@callawayhenderson.com



360 Spring Hill Road

Montgomery Township, NJ | \$1,790,000

4 BD | 4 BA | 1.07 AC | ch-sir.com/id/X5M2FW

Stephen Thomas Sales Associate

609.306.4030 stthomas@callawayhenderson.com



7 Foxcroft Drive

Lawrence Township, NJ | \$1,695,000

5 BD | 6/1 BA | 1.39 AC | ch-sir.com/id/KZ8ZLP

Owen ("Jones") Toland Sales Associate

609.731.5953 jtoland@callawayhenderson.com



88 Bouvant Drive

Princeton, NJ | \$1,695,000

5 BD | 3/1 BA | 2.01 AC | ch-sir.com/id/92V22M

Owen ("Jones") Toland Sales Associate

609.731.5953 jtoland@callawayhenderson.com



8 Greenholm Street, Unit 3

Princeton, NJ | \$1,279,000

2 BD | 2 BA | 0.6 AC | ch-sir.com/id/YHBHBZ

Mark Davies Broker Associate

215.248.2727 mdavies@callawayhenderson.com



339 Hamilton Avenue

Princeton, NJ | \$1,275,000

5 BD | 2/1 BA | 0.58 AC | ch-sir.com/id/8EGLRW

Mark Davies Broker Associate

215.248.2727 mdavies@callawayhenderson.com



82 Linden Lane

Princeton, NJ | \$899,000

3 BD | 1/1 BA | 0.12 AC | ch-sir.com/id/S6Q3VL

Judson Henderson Broker of Record

609.651.2226 jhenderson@callawayhenderson.com



92 Halsey Reed Road

Cranbury Township, NJ | \$650,000

4 BD | 1/1 BA | 0.35 AC | ch-sir.com/id/WYZCDJ

Grant Wagner Sales Associate

609.331.0573 gwagner@callawayhenderson.com



1308 Great Road

Montgomery Township, NJ | \$799,000

3 BD | 3/1 BA | 3.1 AC | ch-sir.com/id/6GYFEB

Stephen Thomas Sales Associate

609.306.4030 stthomas@callawayhenderson.com

Callaway Henderson Sotheby's International Realty | 4 Nassau Street, Princeton, NJ 08542 | 609.921.1050 | callawayhenderson.com

© 2025 Sotheby's International Realty. All Rights Reserved. Sotheby's International Realty® is a registered trademark and used with permission. Each Sotheby's International Realty office is independently owned and operated, except those operated by Sotheby's International Realty, Inc. All offerings are subject to errors, omissions, changes including price or withdrawal without notice. Equal Housing Opportunity.



Blackrock Farm

50 Dunkard Church Road
Stockton, New Jersey

\$3,595,000

Blackrock Farm is an exceptional country estate in Hunterdon County's esteemed horse country, seamlessly blending the quiet countryside with modern luxury. Recently enhanced with contemporary updates and featuring a new resort-style pool. The sophisticated home spans four levels, offering exquisite millwork, a gourmet kitchen, and a dramatic two-story great room with sweeping views. Equestrian amenities include the custom 19-stall barn and a two-story center aisle, lush pastures, and an outdoor arena - perfect for events, hobbyists, or car enthusiasts. Located between NYC and Philadelphia, you are offered easy access to the charming towns of Lambertville, New Hope, and Princeton.

5 Bedrooms

5.3 Bathrooms

35.89 Acres



Cary Simons Nelson
Global Real Estate Advisor
Kurfiss Sotheby's International Realty
c. 484.431.9019 | o. 610.229.9011
cary@kurfiss.com



Debra Ross
Global Real Estate Advisor
Kienlen Lattmann Sotheby's International Realty
c. 908.285.0666 | o. 908.719.2500
dross@klsir.com





A magical place to call home

Upper Saddle River, New Jersey

\$2,995,000

sothebysrealty.com/id/YC36LE

Experience the ultimate family retreat in Upper Saddle River, where elegance meets comfort in this custom-built home. Designed for both relaxation and entertaining, it features six spacious bedrooms—including two primary suites—and showcases exquisite craftsmanship with custom windows and European materials. The gourmet kitchen flows into the family room, leading to a beautiful bluestone terrace complete with an outdoor kitchen, perfect for gatherings. The lower level offers a professional theater, bar, gym, and sauna, while the heated Gunite pool with a waterfall and swim-up bar enhances your private oasis. Enjoy seamless living with an elevator servicing all three levels.

6 Bedrooms

7.3 Bathrooms



Christine Frosini
Broker Associate
c. 201.314.1195 o. 201.825.3600
christine.frosini@sothebysrealty.com

Prominent Properties Sotheby's International Realty | 152 West Saddle River Road, Upper Saddle River, New Jersey | sothebysrealty.com

© 2025 Sotheby's International Realty. All Rights Reserved. Sotheby's International Realty® is a registered trademark and used with permission. Each Sotheby's International Realty office is independently owned and operated, except those operated by Sotheby's International Realty, Inc. All offerings are subject to errors, omissions, changes including price or withdrawal without notice. Equal Housing Opportunity.



Grand Greenwich Estate

27 Stiles Lane, Greenwich, Connecticut

\$5,900,000

sothebysrealty.com/id/VWT4JV

Nestled at the end of a cul-de-sac, 27 Stiles Lane is a grand brick manor on 4.3 private acres. With 7,438 sq. ft., six en suite bedrooms, and exquisite craftsmanship, this estate offers elegance and comfort. Two fireplaces and a stunning library create inviting spaces, while the resort-style backyard boasts a pool, tennis court, and stone patio. Gather around the fire pit or enjoy peaceful moments in this secluded retreat. A bonus room offers endless possibilities, and a three-car garage provides ample storage. This is more than a home—it's a private Greenwich sanctuary.

6 Bedrooms

7/3 Bathrooms

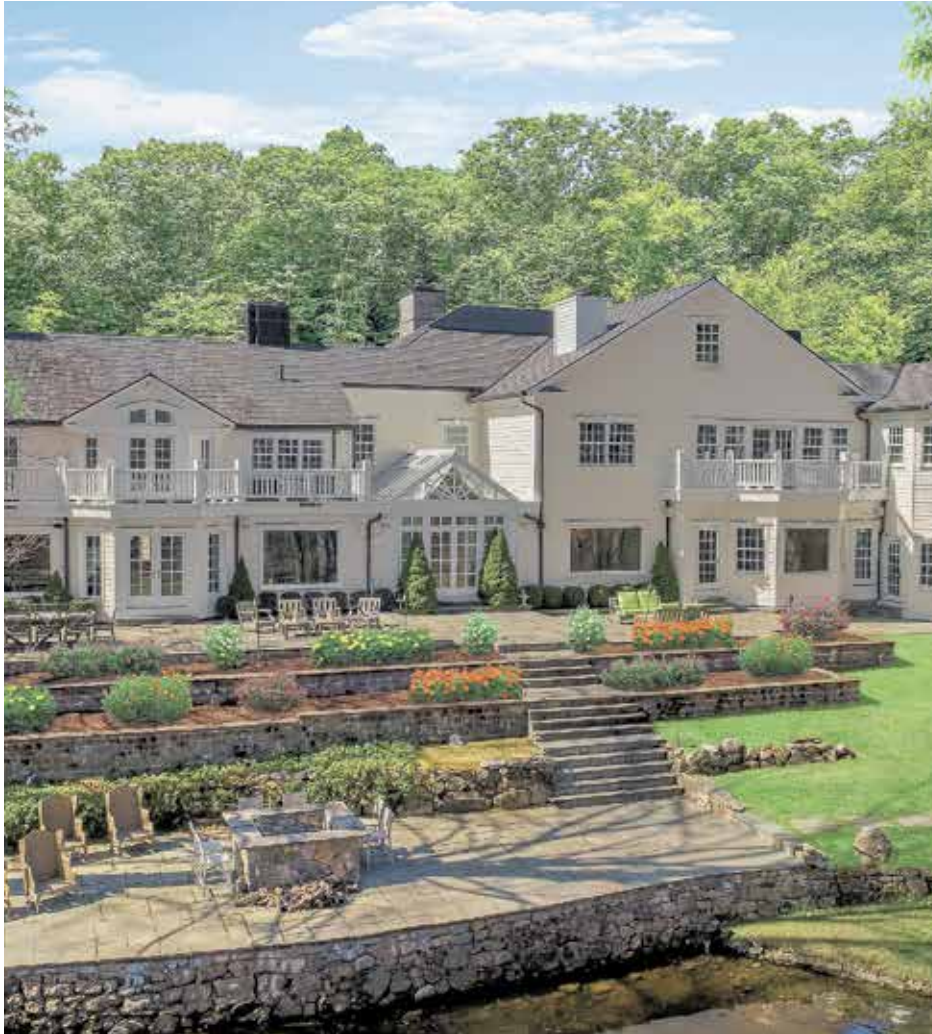
7,438± sq.ft



Fatou Niang
Luxury Real Estate Advisor
212.961.7428
fniang@williampitt.com



New Canaan Brokerage | 26 Cherry Street, New Canaan, Connecticut | sothebysrealty.com



Idyllic Estate on Park-Like Grounds

637 Valley Road New Canaan, Connecticut

\$4,200,000

sothebysrealty.com/id/V2PCQY

Experience the unparalleled 637 Valley Road estate—a majestic stone Georgian Colonial on 7.04 idyllic acres along the Silvermine River. This 12,000 sq. ft. masterpiece features a chef's kitchen, stately library, ensuite bedrooms with eight fireplaces, a billiards room, and a private guest wing. Outdoors, enjoy a pool, tennis and pickleball courts, bluestone patios, and a fire pit. The updated 2018 guest house offers a cozy retreat. Just minutes from town, the train, and the Long Island Sound, this exceptional estate blends luxury, privacy, and convenience—an opportunity not to be missed!

6 Bedrooms

7.3 Bathrooms

12,071± sq.ft

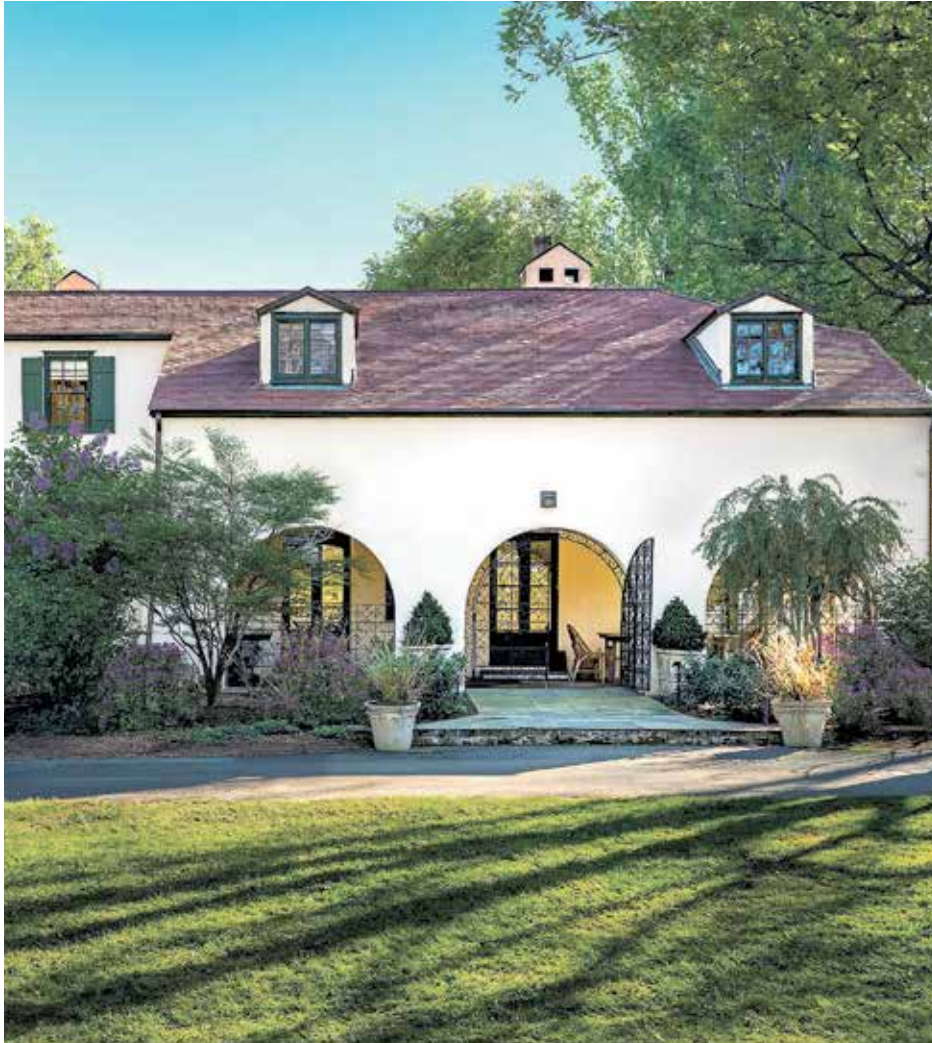


JoAnne Fisher
Licensed Real Estate Salesperson
203.858.0749
joanne.fisher@sothebysrealty.com



**LM Homes Team at William Pitt Sotheby's
International Realty**
Lainie: 917.903.6275 | Mersene: 203.644.6172
lm.homes@sothebysrealty.com





Meticulously Redesigned Manor

61 Clapboard Hill Road Westport, Connecticut

\$4,400,000

sothebysrealty.com/id/T9BMQZ

Beautifully sited on 2 serene acres on a coveted street in the heart of Greens Farms, 61 Clapboard Hill Road is a prime location minutes from town, train, and beaches. Down a gated circular drive, the stately Mediterranean home, which dates back to 1929, and detached two car garage, has been meticulously transformed by renowned designer and developer, Joshua Gurwitz. Envisioned as a sanctuary, the residence is embraced by nature. This visionary restoration and renovation defines unparalleled elegance and functionality. Surrounded by mature trees, the large and level acreage offers room for a pool and tennis court to complete your retreat.

4 Bedrooms

4.5 Bathrooms

3,418± sq.ft



LM Homes Team at William Pitt Sotheby's International Realty

Lainie: 917.903.6275 | Mersene: 203.644.6172

lm.homes@sothebysrealty.com





Privacy and Long Island Sound views

50 Whedon Lane, Madison, CT

\$1,695,000

50whedonlane.com

In a world of its own, this retreat gives both complete privacy and a front row seat to an ever changing nature display, south of Route 1. On over 2.5 acres, the original owner was able to bring a forward thinking vision to life with this multi-level transitional home. This home is ideal for entertaining for an evening or a long weekend. An expansive wrap around IPE deck, hot tub & fire pit make for a perfect casual outside get-together. Full of light & air, a very flexible floor plan and additional thoughtful touches throughout. A koi pond with waterfall greets you at the entry to this oasis with park-like setting and circular drive. You will be amazed that this unique location exists, so close to everything yet entirely peaceful and separate.

3 Bedrooms

3.2 Bathrooms

2,724± sq.ft



Margaret Muir
Real Estate Advisor
203.415.9187
mmuir@wpsir.com





A retreat that transcends the ordinary

131 Burr Hill Road, Killingworth, CT

\$3,900,000

ctluxuryestate.com

Nestled on 14.4 acres of beauty, this magnificent estate is not just a residence; It's a lifestyle. Upon entering, you are greeted by a grand foyer that sets the tone of luxury that carries throughout the home. An exquisite kitchen equipped with a custom La Cornue range, 2 granite islands, 3 copper sinks and views to two dining rooms. The first-floor primary suite enjoys its own wing, with en-suite dual baths, steam shower, hair salon, make-up room, infrared sauna and a fashion enthusiast's dream closet. Entertainment is at the forefront of the lower level, with a game room, movie theater, wine cellar, a state-of-the-art gym that will satisfy the most dedicated fitness enthusiasts. This masterpiece must be seen!

11 Bedrooms

11.4 Bathrooms

14,110± sq.ft



Melanie Scull
Real Estate Advisor
323.314.0888
mscull@wpsir.com





688 Sylvan Road

South Williamsport, Pennsylvania

\$875,000

Experience timeless elegance in this fully custom, meticulously restored home in South Williamsport. Built in 1901 and thoughtfully expanded, the residence boasts a gourmet kitchen with custom cherry cabinetry, an 11-foot granite island, radiant heated floors, and premium Sub-Zero and Wolf appliances. The primary suite features a two-sided fireplace, French doors, and a luxurious en-suite bath. Additional bedrooms offer radiant-heated floors and elegant finishes. Set on 10 private acres in the Clean & Green program, this exceptional property offers refined living near the Little League World Series complex and Bucknell University.

4 Bedrooms

3.1 Bathrooms

5,207 sq.ft



Luisa Ramondo
Global Real Estate Advisor
c. 610.909.8700 | o. 610.229.9011
luisa.ramondo@sothebysrealty.com



Kurfiss Sotheby's International Realty | 25 Morris Ave, Bryn Mawr, Pennsylvania | sothebysrealty.com



Your Private Bucks County, PA Sanctuary Awaits - 2169 Aquetong Road

New Hope, Pennsylvania | \$5,750,000 or For Rent - \$30,000 Monthly | sothebysrealty.com/id/TXTE7G

Set on 10+ private acres near New Hope, this 10,000 sq. ft. estate blends award-winning design with luxe amenities perfect for sophisticated living and grand entertaining.



Spectacular City Views at 2100 Hamilton | 70% Sold

Philadelphia, Pennsylvania | 2 BR STARTING AT \$1,999,000

27 Exclusive Residences | Outdoor Terraces | sothebysrealty.com/id/5BHS8W



Arthaus | Philadelphia's Ultra Luxury Condo Residences

Philadelphia, Pennsylvania | PENTHOUSE UNITS STARTING AT \$7,604,300

3 BR & 4 BR LAYOUTS AVAILABLE | sothebysrealty.com/id/TCXHGX

Douglas Pearson

Sales Associate License# RS307768

c. 267-907-2590 | o. 215-735-2225

dpearson@kurfiss.com

Kurfiss Sotheby's International Realty | 1631 Locust Street 3rd Floor, Philadelphia, Pennsylvania | sothebysrealty.com



Expert guidance in a competitive market

With high demand and limited inventory, expert guidance is key in this competitive market. Whether you seek a waterfront retreat or a historic gem, Provincetown's beauty, arts scene, and community make it a sought-after destination.

The Beach Buoys are full-time, year-round professionals with over 40 years of combined experience, deeply rooted in the community we serve. Our passion for helping buyers and sellers goes beyond transactions—we prioritize our clients' best interests, offering dedicated service, local insight, and an unwavering commitment to exceeding expectations.

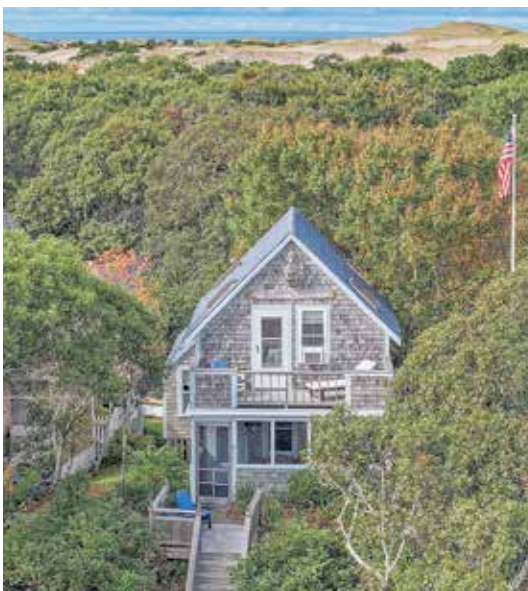
BeachBuoysCapeCod.com

The Beach Buoys

Sales Associates

Devin Coutu, Thomas Andrews, & Rick Tourgee

508.296.5459 | TheBBTeam@gibsonsir.com



12 Mayflower Avenue

Provincetown, Massachusetts | \$1,495,000

1 BD | 2.0 BA | sothebysrealty.com/id/CPRKGD



945 Commercial Street Unit 9C

Provincetown, Massachusetts | \$1,150,000

2 BD | 1.0 BA | sothebysrealty.com/id/RYXZGK



5 Bayberry Avenue

Provincetown, Massachusetts | \$1,795,000*

4 BD | 3.0 BA | sothebysrealty.com/id/QBHP2R

Gibson Sotheby's International Realty | 168 Commercial Street, Provincetown, Massachusetts | gibsonsothebysrealty.com

© 2025 Sotheby's International Realty. All Rights Reserved. Sotheby's International Realty® is a registered trademark and used with permission. Each Sotheby's International Realty office is independently owned and operated, except those operated by Sotheby's International Realty, Inc. All offerings are subject to errors, omissions, changes including price or withdrawal without notice. Equal Housing Opportunity. *Notes buyer representation.



352 Marlborough Street

Boston, Massachusetts | \$9,450,000

4 BD | 4F 3H BA | sothebysrealty.com/id/NTEHJW

Michael Carucci Sales Associate
617.901.7600 michael.carucci@gibsonsir.com



130 Cabot Street

Brookline, Massachusetts | \$7,495,000

6 BD | 7 BA

Michael Carucci Sales Associate
617.901.7600 michael.carucci@gibsonsir.com



70 Lazell Street

Hingham, Massachusetts | \$4,750,000

4 BD | 4 BA | sothebysrealty.com/id/BER5CG

Michael Carucci Sales Associate
617.901.7600 michael.carucci@gibsonsir.com



593 Commercial Street

Provincetown, Massachusetts | \$3,925,000

3 BD | 2.5 BA | sothebysrealty.com/id/S2KC4Y

Gabby Hanna Sales Associate
917.696.8952 gabby.hanna@gibsonsir.com



2 Kenway Street

Cambridge, Massachusetts | \$3,050,000

3+ BD | 3.5 BA | sothebysrealty.com/id/X4WJXD

John O'Neil Sales Associate
617.308.5638 john.oneil@gibsonsir.com



41 Myrtle Street

Norfolk, Massachusetts | \$2,900,000

4 BD | 3.5 BA | sothebysrealty.com/id/B9CLSS

Kim Williams Sales Associate
508.298.9725 kim.williams@gibsonsir.com



51 Harvard Street

Worcester, Massachusetts | \$2,275,000

Mixed Use | sothebysrealty.com/id/N267RG

Aleksandra Koren Sales Associate
781.632.9492 aleksandra.koren@gibsonsir.com



2 Diamond St

Norfolk, Massachusetts | \$1,450,000

4 BD | 4 BA | sothebysrealty.com/id/EVLM DP

Kim Williams Sales Associate
508.298.9725 kim.williams@gibsonsir.com



Wight Isle Estates

Sandown, New Hampshire | from \$609,900

Luxury Townhouses | 2 BD | 2.5 BA

Kenneth J. Leva Sales Associate
978.877.8194 kenneth.leva@gibsonsir.com



230 Briarwood Lane

Portsmouth, Rhode Island | \$5,350,000

4 BD | 5.1 BA | sothebysrealty.com/id/2886XG

Kylie McCollough Sales Associate

401.864.8830 kylie.mccollough@mottandchace.com



182 Torrey Road

South Kingstown, Rhode Island | \$4,495,000

4 BD | 5.3 BA | sothebysrealty.com/id/YLHGZT

Shirley Page Sales Associate

401.218.7739 shirley.page@mottandchace.com



15 Carnegie Heights Drive

Portsmouth, Rhode Island | \$6,995,000

5 BD | 7.2 BA | sothebysrealty.com/id/YCWCL3

Kylie McCollough Sales Associate

401.864.8830 kylie.mccollough@mottandchace.com



20 Narragansett Avenue, #701

Narragansett, Rhode Island | \$1,299,000

2 BD | 2 BA | sothebysrealty.com/id/NMXMVE

John Blair Sales Associate

857.919.0923 john.blair@mottandchace.com

Mott & Chace Sotheby's International Realty | 100 Exchange Street, Providence, Rhode Island | mottandchace.com



Daniel
Ravenel

Sotheby's
INTERNATIONAL REALTY



28 Planters Row

Hilton Head Island, South Carolina | \$6,895,000 | 28plantersrow.com

With oceanfront views and exceptional craftsmanship, this 5-bedroom Hilton Head home is made for a pristine coastal lifestyle.



72 Oak Tree Road

Bluffton, South Carolina | \$3,250,000

4 BD | 4.5 BA | 72oaktree.com



160 Inverness Drive

Bluffton, South Carolina | \$3,200,000

4 BD | 4.5 BA | 160inverness.com



Douglas Winters

Realtor®

843.592.3155

doug@douglaswintersgroup.com

Daniel Ravenel Sotheby's International Realty | 23-A Shelter Cove Lane, Hilton Head Island, South Carolina | danielravenelsir.com

© 2025 Sotheby's International Realty. All Rights Reserved. Sotheby's International Realty® is a registered trademark and used with permission. Each Sotheby's International Realty office is independently owned and operated, except those operated by Sotheby's International Realty, Inc. All offerings are subject to errors, omissions, changes including price or withdrawal without notice. Equal Housing Opportunity.



Daniel
Ravenel

Sotheby's
INTERNATIONAL REALTY



Historic Charleston Charm C.1730

35 Tradd Street Charleston, South Carolina

\$3,495,000

35tradd.com

Nestled in Charleston's historic South of Broad, this exquisite masonry home, built in 1730, blends timeless charm with modern luxury.

Spacious living areas, an oversized dining room, and a private walled garden with a bluestone patio make it perfect for entertaining.

Upstairs, the primary suite features an ensuite bath and walk-in closet, plus two guest suites and a flexible home office. Hardwood floors, eight fireplaces, and historic details enhance its character.

Located on high ground in an X flood zone with no flooding history, it's just steps from Charleston's best dining, shopping, and waterfront views.

3 Bedrooms

3.5 Bathrooms

3,666± sq.ft



Ruthie Ravenel
Global Real Estate Advisor
843.696.8858
ruthie@danielravenelsir.com



Daniel Ravenel Sotheby's International Realty | 33 Broad Street, Charleston, South Carolina | danielravenelsir.com

© 2025 Sotheby's International Realty. All Rights Reserved. Sotheby's International Realty® is a registered trademark and used with permission. Each Sotheby's International Realty office is independently owned and operated, except those operated by Sotheby's International Realty, Inc. All offerings are subject to errors, omissions, changes including price or withdrawal without notice. Equal Housing Opportunity.



Daniel
Ravenel

Sotheby's
INTERNATIONAL REALTY



A Modern Escape in Hampton Park

71 Moultrie Street Charleston, South Carolina

\$3,795,000

71moultriest.com

Overlooking Hampton Park, 71 Moultrie Street seamlessly blends history, luxury, and modern convenience. Completely rebuilt in 2023, this reimagined 1920s home features an open-concept great room, a gourmet kitchen with a hidden scullery, and dual primary suites—one with a private deck.

The landscaped yard offers a heated gunite pool, spa, outdoor shower, and electric entry gate. Smart home technology, a Generac generator, and a dual-entry garage ensure ultimate comfort.

A rare find in Charleston's most sought-after neighborhood, this home is the perfect fusion of historic charm and modern living.

4 Bedrooms

4.5 Bathrooms

3,250± sq.ft



Ruthie Ravenel

Global Real Estate Advisor

843.696.8858

ruthie@danielravenelsir.com



Daniel Ravenel Sotheby's International Realty | 33 Broad Street, Charleston, South Carolina | sothebysrealty.com

© 2025 Sotheby's International Realty. All Rights Reserved. Sotheby's International Realty® is a registered trademark and used with permission. Each Sotheby's International Realty office is independently owned and operated, except those operated by Sotheby's International Realty, Inc. All offerings are subject to errors, omissions, changes including price or withdrawal without notice. Equal Housing Opportunity.



Daniel
Ravenel

Sotheby's
INTERNATIONAL REALTY



763 Marlin Drive

Fripp Island, South Carolina | \$3,294,000

6 BD | 5 FULL BA | 2 HALF BA | 763marlin.com



715 Winter Trout Road

Fripp Island, South Carolina | \$2,289,000

4 BD | 3 BA | 715wintertrout.com



759 Marlin Drive

Fripp Island, South Carolina | \$2,999,000

6 BD | 6.5 BA | 759marlin.com



407 Ocean Point Lane

Fripp Island, South Carolina | \$2,849,000

4 BD | 4.5 BA | 407oceanpoint.com



Shannon Tanner, Realtor®

843.422.4270

shannon@danielravenelsir.com

shannontannerrealestate.com

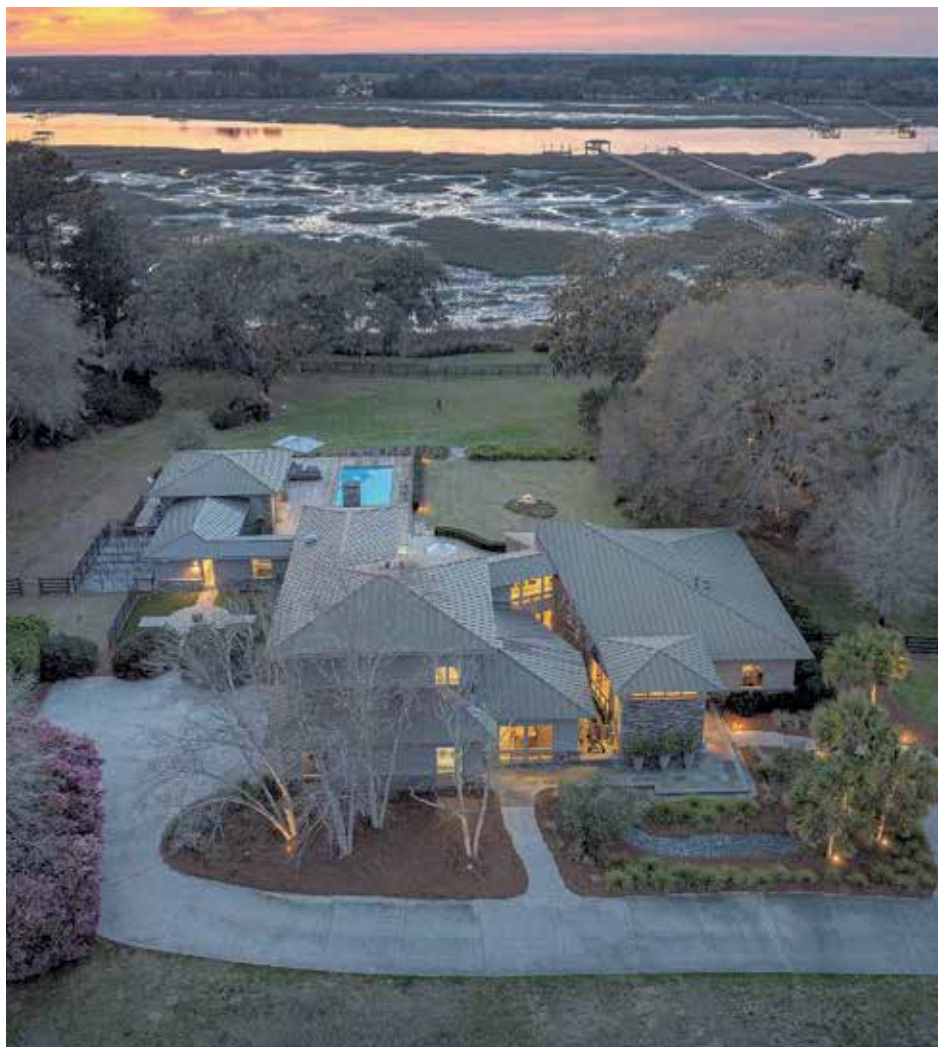
Daniel Ravenel Sotheby's International Realty | 23-A Shelter Cove Lane, Hilton Head Island, South Carolina | danielravenelsir.com

© 2025 Sotheby's International Realty. All Rights Reserved. Sotheby's International Realty® is a registered trademark and used with permission. Each Sotheby's International Realty office is independently owned and operated, except those operated by Sotheby's International Realty, Inc. All offerings are subject to errors, omissions, changes including price or withdrawal without notice. Equal Housing Opportunity.



Daniel
Ravenel

Sotheby's
INTERNATIONAL REALTY



A Lowcountry Masterpiece

4020 Betsy Kerrison Parkway, Johns Island, SC

\$6,700,000

4020betsykerrison.com

Welcome to an unparalleled retreat nestled on 23.75 pristine acres along the picturesque Bohicket Creek. This is truly a one-of-a-kind luxurious and serene property with stunning waterfront views and exceptional architectural design, making it one of Charleston's finest. It features 400 feet of deepwater frontage along Bohicket Creek and 390 feet of frontage on Betsy Kerrison Parkway. Spanning 7,721 square feet, the estate features four spacious bedrooms, five full baths, and two half baths, along with a private office with a walk-in safe, a large upper-level media room, and a custom floating staircase that enhances the home's sophisticated design.

4 Bedrooms

5 Full & 2 Partial Baths

7,721± sq.ft



Marjorie Stephenson

Realtor®

843.834.1773

marjorie@danielravenelsir.com



Daniel Ravenel Sotheby's International Realty | 33 Broad Street, Charleston, South Carolina | danielravenelsir.com

© 2025 Sotheby's International Realty. All Rights Reserved. Sotheby's International Realty® is a registered trademark and used with permission. Each Sotheby's International Realty office is independently owned and operated, except those operated by Sotheby's International Realty, Inc. All offerings are subject to errors, omissions, changes including price or withdrawal without notice. Equal Housing Opportunity.



Daniel
Ravenel

Sotheby's
INTERNATIONAL REALTY



Historic Elegance & Modern Comforts

100 Queen Street, Charleston, South Carolina

\$2,850,000

100queenst.com

Welcome to 100 Queen Street, a meticulously restored 1872 Charleston single home, perfectly positioned in one of downtown's highest and driest locations. This 2.5-story residence blends history, charm, and modern luxury, with iconic double piazzas that offer stunning steeple views. Thoughtfully updated, this stunning home features high ceilings, elegant hardwood floors, original six-over-six windows, and six fireplaces (five gas-ready). The first-floor primary suite opens to a private garden patio, while the beautifully designed kitchen balances style and function. A gated entrance, off-street parking for three, and a walled garden provide both privacy and convenience - all in a prime location near King Street's finest dining, shopping, and cultural attractions.

5 Bedrooms

5.5 Bathrooms

2,870± sq.ft



Georgia C. Nettles

Realtor®

843.532.8437

Georgia@DanielRavenelSIR.com



Daniel Ravenel Sotheby's International Realty | 33 Broad Street, Charleston, South Carolina | danielravenelsir.com

© 2025 Sotheby's International Realty. All Rights Reserved. Sotheby's International Realty® is a registered trademark and used with permission. Each Sotheby's International Realty office is independently owned and operated, except those operated by Sotheby's International Realty, Inc. All offerings are subject to errors, omissions, changes including price or withdrawal without notice. Equal Housing Opportunity.



52 Sheffield Avenue

Beaufort, South Carolina | \$1,290,000
 5 BD | 3 F BA | 2 H BA | 52sheffield.com
Amy Lance Realtor®
 404.550.2608 amy@danielravenelsir.com



401 Port Republic Street

Beaufort, South Carolina | \$2,550,000
 4 BD | 4.5 BA | 401portrepublic.com
Amy Lance Realtor®
 404.550.2608 amy@danielravenelsir.com



503 13th Street

Tybee Island, Georgia | \$696,000
 3 BD | 2 BA | 50313thst.com
Ruthie Lynah Whitlow Realtor®
 912.441.4555 ruthie.lynah@danielravenelsir.com



3699 Goodwater Street

Mount Pleasant, South Carolina | \$2,175,000
 6 BD | 4.5 BA | 3699goodwater.com
Amy Templeton Realtor®
 843.425.4100 amy.templeton@danielravenelsir.com



2101 Guerins Bridge Road

Wando, South Carolina | \$1,450,000
 3 BD | 3 BA | 2101guerinsbridge.com
Amy Templeton Realtor®
 843.425.4100 amy.templeton@danielravenelsir.com



3 East Macon Street

Savannah, Georgia | \$2,400,000
 3 BD | 3.5 BA | 3eastmacon.com
Annie Rockwell Realtor®
 1.912.844.5783 annie@danielravenelsir.com



299 Bampfield Drive

Mount Pleasant, South Carolina | \$4,485,000
 5 BD | 5.5 BA | 299bampfield.com
Meghan Webster Realtor®
 843.813.2311 mwebster@danielravenelsir.com



232 Haddrell Street

Mount Pleasant, South Carolina | \$4,900,000
 3 BD | 2.5 BA | 232haddrell.com
Jack Huguley Realtor®
 843.224.7711 jack@danielravenelsir.com



222 West 34th Street

Savannah, Georgia | \$699,900
 3 BD | 2 BA | 222w34th.com
Ruben Ramos Realtor®
 912.856.2244 ruben@danielravenelsir.com



Daniel
Ravenel

Sotheby's
INTERNATIONAL REALTY



Island Living with Beachfront Garden

5 Northshore Drive Tybee Island, Georgia

\$2,500,000

5northshore.com

This is a rare opportunity to own an oceanfront lot on Savannah's Tybee Island. Consisting of two lots sold together, a four-bedroom, four-bathroom residence overlooks an unobstructed beachfront garden. Each room in the home has a view of the garden, dunes, beach, and ocean. Adorned with multiple porches, this light-filled home is designed for indoor/outdoor living. Less than 20 miles from Savannah's historic district, Tybee is an undiscovered gem with a charming mixture of old and new and a strong sense of place. Restaurants, bars, and outdoor recreation opportunities abound.

4 Bedrooms

4 Bathrooms

2,870± sq.ft



Susan Myers

Realtor®

c. 912.398.8620 o. 912.234.3323

susan.myers@danielravenelsir.com



Daniel Ravenel Sotheby's International Realty | 300 Bull Street Suite 101, Savannah, Georgia | danielravenelsir.com

© 2025 Sotheby's International Realty. All Rights Reserved. Sotheby's International Realty® is a registered trademark and used with permission. Each Sotheby's International Realty office is independently owned and operated, except those operated by Sotheby's International Realty, Inc. All offerings are subject to errors, omissions, changes including price or withdrawal without notice. Equal Housing Opportunity.



Daniel
Ravenel

Sotheby's
INTERNATIONAL REALTY



Penthouse Condo in Historic Downtown

300 Bull Street #704 Savannah, Georgia

\$4,600,000

300bull-704.com

With dramatic views of The Cathedral Basilica of St. John The Baptist, this DeSoto penthouse offers a panoramic cityscape of the Eastern and Southern Landmark District. Residents enjoy 24/7 concierge service and two private parking spots.

Inside, a grand column and staircase lead to soaring 17-foot ceilings and arched windows in the massive living room. The library seamlessly integrates the kitchen with striking design elements. The first floor features the main bedroom, laundry, and powder room. A private elevator accesses the second floor with two bedrooms and baths, and the third floor with an additional suite and kitchen. A stunning rooftop garden and patio provide exceptional outdoor space,

4 Bedrooms

4.5 Bathrooms

4,525± sq.ft



Lucy Hitch
Realtor®
912.704.6665
lucy.hitch@danielravenelsir.com



Monica McGoldrick
Realtor®
912.667.7407
monica.mcgoldrick@danielravenelsir.com



Daniel Ravenel Sotheby's International Realty | 300 Bull Street Suite 101, Savannah, Georgia | danielravenelsir.com

© 2025 Sotheby's International Realty. All Rights Reserved. Sotheby's International Realty® is a registered trademark and used with permission. Each Sotheby's International Realty office is independently owned and operated, except those operated by Sotheby's International Realty, Inc. All offerings are subject to errors, omissions, changes including price or withdrawal without notice. Equal Housing Opportunity.



Jeff Miller, an expert in luxury properties in Miami Beach and surrounding areas.

Jeff Miller

Sales Associate 3173481

305.610.4509

Jmiller@onesothebysrealty.com



Setai 2006

101 20th Street, Miami Beach, Florida | \$3,750,000

2 BD | 2 BA | sothebysrealty.com/id/KWXQTT



Setai 1907

101 20th Street, Miami Beach, Florida | \$4,395,000

2 BD | 2 BA | sothebysrealty.com/id/TBZWJ9

ONE Sotheby's International Realty | 119 Washington Ave, Miami Beach, Florida | sothebysrealty.com

© 2025 Sotheby's International Realty. All Rights Reserved. Sotheby's International Realty® is a registered trademark and used with permission. Each Sotheby's International Realty office is independently owned and operated, except those operated by Sotheby's International Realty, Inc. All offerings are subject to errors, omissions, changes including price or withdrawal without notice. Equal Housing Opportunity.



Murano Grande 1106

400 Alton Rd, Miami Beach, Florida | \$3,500,000

2 BD | 3 BA | sothebysrealty.com/id/JZQ3WL



Aqua Spear 504

6103 Aqua Ave, Miami Beach, Florida | \$3,200,000

4 BD | 4.5 BA | sothebysrealty.com/id/TSXKB



8810 Froude

8810 Froude Ave, Surfside, Florida | \$2,550,000

3 BD | 2.5 BA | sothebysrealty.com/id/JNG46L



One Ocean 304

1 Collins Ave, Miami Beach FL | \$4,500,000

3 BD | 3.5 BA | sothebysrealty.com



Jeff Miller

Sales Associate 3173481

Jmiller@onesothebysrealty.com

305.610.4509

ONE Sotheby's International Realty | 119 Washington Ave, Miami Beach, Florida | sothebysrealty.com



387 Ocean Blvd.

Golden Beach, FL 33160

6 BD | 9.5 BA | 11,599 SQ FT
PRICE UPON REQUEST



Eighty Seven Park | 8701 Collins Ave.
Unit 905

Miami Beach, FL 33154

2 BD | 2.5 BA | 1,522 SQ FT
OFFERED AT: \$4,350,000



La Mare 10301 E. Bay Harbor Dr.
Unit 501

Bay Harbor Islands, FL 33154

4 BD | 4.5 BA | 4,652 SQ FT
OFFERED AT: \$8,500,000



147 Golden Beach Dr.

Golden Beach, FL 33160

4 BD | 2.5 BA | 2,256 SQ FT
OFFERED AT: \$4,250,000



570 Ocean Blvd.

Golden Beach, FL 33160

4 BD | 3 BA | 3,683 SQ FT
OFFERED AT: \$3,990,000



9737 W. Broadview Dr.

Bay Harbor Islands, FL 33154

6 BD | 6 BA | 8,173 SQ FT
OFFERED AT: \$14,990,000



JONATHAN BIGELMAN

Global Real Estate Advisor

786.246.2068

jbigelman@onesothebysrealty.com



LYDIA ESKENAZI

Global Real Estate Advisor

305.785.0440

lydia@onesothebysrealty.com

ONE Sotheby's International Realty, Surfside Office | 9588 Harding Avenue | Surfside, FL 33154



Cocoloba Estate

Plantation Key, Florida Keys

\$42,000,000

sothebysrealty.com/id/YG9F5Q

Discover a coastal luxury masterpiece designed by renowned architects and nestled within a private, five-acre waterfront oasis. Revel in the seamless blend of indoor and outdoor living, featuring covered outdoor verandas, a tranquil saltwater pond, and a scenic stone pathway. Enjoy a four-bay air-conditioned car garage and a secluded beach for ultimate privacy. Indulge in resort-style amenities, including a gas-heated pool, hot tub, and an elevated summer kitchen with stunning views. With thoughtful design and exclusive access to a private dock, this estate represents a legacy of luxury, blending heritage with innovative living, making it an aspirational yet attainable haven for discerning buyers.

6 Bedrooms

9 Bathrooms

17,895± Gross sq.ft



Eric Rizzo
Sales Associate
305.394.3062
erizzo@oceansir.com

Russell Post
Managing Broker
305.451.8199
russell@oceansir.com



Ocean Sotheby's International Realty | 81888 Overseas Highway, Plantation Key, Florida | oceansir.com



Coastal Luxury, Timeless Value—Find Your Perfect Naples Retreat.

Imagine waking up to the sound of waves and panoramic views of Naples' pristine beaches—where every moment is defined by beauty, serenity, and world-class living. As a Luxury International Sales Associate with over 23 years of experience, I specialize in curating exceptional waterfront and beach side properties that not only provide an unparalleled lifestyle but also hold strong long-term value. Backed by an unsurpassed global network, strategic marketing, and expert negotiation skills, I deliver the highest level of representation and service. Whether you're seeking a stunning coastal retreat or a premier investment opportunity, I connect discerning buyers with Naples' most coveted properties. Let's turn your vision of paradise into a reality.

RebeccaSinatra.PremierSothebysRealty.com

Rebecca Sinatra

Global Real Estate Advisor

239.227.8556

Rebecca.Sinatra@PremierSIR.com



112 1st Avenue N

Naples, Florida | \$12,550,000

4 BD | 6.0 BA | sothebysrealty.com/id/NG9FLV



27547 Big Bend Road

Bonita Springs, Florida | \$2,950,000

4 BD | 3.5 BA | sothebysrealty.com/id/YX7BNH

Premier Sotheby's International Realty | 390 Broad Ave. S Naples, FL 34102 | PremierSIR.com



Lido Shores

1067 Westway Drive, Sarasota, Florida

\$24,700,000

sothebysrealty.com/id/82SM6V

Perched along the iconic shores of Lido Key Beach, 1067 Westway Drive is a masterpiece of coastal luxury, offering breathtaking Gulf views, seamless indoor-outdoor living, and an array of exceptional amenities. From the grand travertine staircase and soaring great room to the infinity-edge pool, rooftop deck, and resort-style primary suite, every detail has been meticulously designed for both relaxation and entertaining in an unparalleled beachfront setting.

6 Bedrooms

7.2 Baths

8,929 square feet



Joel Schemmel
Global Real Estate Advisor
941.587.4894
joel.schemmel@sothebysrealty.com





Your Palm Beach Real Estate Matchmaker

Stephanie Lefes, Senior Global Real Estate Advisor, has been a full-time resident of Palm Beach since 1990 and has a broad knowledge of waterfront condos, multifamily properties, residential estates on the island, and surrounding communities.

It would be my pleasure to assist you, whether you are seeking a property with the best upside appreciation or looking to sell without leaving money on the table, my experience and knowledge of the market will help guide your decisions.

As a long-time resident of Palm Beach, I continue to be available full-time and year-round to assist you. Please call me directly if you have any questions, without obligation

StephanieLefes.com

Stephanie Lefes
Senior Global Real Estate Advisor, Broker Associate
561.789.2393
Stephanie.Lefes@sothebys.realty



Beachpoint Penthouse | Poolside Cabana
Palm Beach, Florida | \$2,995,000
3 BD | 3.0 BA | 2660socean704s.com



Sutton Place | Move-in Ready
Palm Beach, Florida | \$1,650,000
2 BD | 2.5 BA | www.2778soceans407.com



400 N Flagler Drive, Penthouse B6
West Palm Beach, Florida | \$18,000/Month
3 BD | 2.5 BA | www.400nflaglerB6.com



7109 Broadway Street

Galveston, Texas | \$774,880 | 7109broadwaygalveston.com

Unique opportunity to own an exquisite waterfront villa - re-imagined & meticulously curated. Superb pro-grade chef's kitchen. 3 Bed | 2 Full Bath | 1 Half Bath | 2,494 Sq Ft



4210 Surf Drive

Galveston, Texas | \$1,149,880 | 4210surfdrgalveston.com

Stellar beachside haven - ensconced on premier Palm Beach double lot graced by commanding ocean vistas. Grand primary suite. 4 Bed | 3 Bath | 2,498 Sq Ft



Jim Rosenfeld
Hall of Fame Member
713.854.1303
jim.rosenfeld@sir.com

Martha Turner Sotheby's International Realty | 1717 West Loop South Ste 1700, Houston, Texas | sothebysrealty.com/houston



Austin's Top Lake Austin & Luxury Home Expert

Approaching one billion dollars in active, pending, and sold inventory since 2020, Bridget is recognized as one of Austin's top-producing Realtors®. She is trusted to represent the world's most discerning clients, both on and off-market, across Lake Austin, in-city neighborhoods, and ranch properties. Delivering a luxury experience at all price points, she provides expert guidance locally and globally. A mentor and industry leader, she ranks among Sotheby's International Realty's Top 100 worldwide. Her success is built on trust, integrity, and perseverance, fostering a global referral network. Whether your next move is near or far, Bridget is ready to assist.

bridgetramey.com

Bridget Ramey
Global Real Estate Advisor
512.796.2602
Bridget.Ramey@sothebysrealty.com



The Legacy of Lake Austin

Austin, Texas | Price Upon Request
9 BD | 8.3 BA | legacyoflakeaustin.com



The Gatsby

Austin, Texas | \$19,950,000
6 BD | 9.2 BA | gatsbyestateatx.com



The Onyx

Austin, Texas | \$19,500,000
7 BD | 8.3 BA | theonyxofaustin.com

Kuper Sotheby's International Realty



Kumara Wilcoxon

#1 Agent in Austin, Texas

Kumara is a distinguished figure in Austin's luxury real estate, specializing in connecting discerning buyers and sellers with the city's finest properties. With over \$3 billion in career sales, she ranks among the top agents globally for Sotheby's International Realty. The Austin Business Journal has recognized her as the #1 Agent in Austin, Texas, underscoring her expertise and dominance in the market. Her strategic insights and dedication to achieving the best outcomes have established her as a trusted advisor, making her an essential partner for those navigating the Austin market.

kumarawilcoxon.com

Kumara Wilcoxon
Global Real Estate Advisor
kumara@sothebysrealty.com



Cromwell Hill Estate

\$12,495,000

historiccromwellestate.com



Expansive Tarrytown Estate Overlooking Reed Park

\$10,495,000

3614murillo.com

Kuper Sotheby's International Realty



Wohali

Coalville, Utah

\$2,250,000–\$5,750,000
wohali.com

Spanning over 5,000 acres, Wohali is nestled in a private valley, flanked by dramatic rock cliff bands at the base of Lewis Peak. This mountain retreat will feature 428 generational estates, each with unique designs and floor plans that seamlessly integrate timeless, European-inspired architecture with modern amenities and considered design.

3-5 Bedrooms
4-7 Bathrooms
2,966-7,274± sq.ft



Onie Bolduc
Associate Broker
435.631.1615
onie.bolduc@sothebysrealty.com

Chris Brandenburg
Sales Associate
859.200.3684
chris.brandenburg@sothebysrealty.com

Todd Francis
Sales Associate
435.640.9151
todd.francis@sothebysrealty.com





Russ
Lyon

Sotheby's
INTERNATIONAL REALTY



Architecturally Renowned

2801 E Camino Norberto
Tucson, AZ 85718

\$2,998,000

sothebysrealty.com/id/776X9Q

Experience a once-in-a-lifetime opportunity to own the renowned 'Ramada House' in Tucson, a masterpiece designed by the acclaimed architect Judith Chafee. This privately gated estate spans 8.6 acres, featuring lush desert vegetation and breathtaking views, nestled in the prestigious Catalina Foothills Estates. Judith Chafee (1932-1998) was a pioneering architect whose most renowned work, the Ramada House, has left an indelible mark on modernist architecture and was deemed important enough to be placed on "the National Register of Historic Places."

4 Bedrooms

4 Bathrooms

3,797 sq.ft.



Robin Sue Kaiserman
Global Real Estate Advisor
(520) 907-9805
robin.kaiserman@russlyon.com



Russ Lyon Sotheby's International Realty | 3450 E Sunrise Drive, Suite 150, Tucson, AZ 85718 | sothebysrealty.com

© 2025 Sotheby's International Realty. All Rights Reserved. Sotheby's International Realty® is a registered trademark and used with permission. Each Sotheby's International Realty office is independently owned and operated, except those operated by Sotheby's International Realty, Inc. All offerings are subject to errors, omissions, changes including price or withdrawal without notice. Equal Housing Opportunity.



The Island. Luxury Vegas Living, Redefined.

Las Vegas is the ultimate Entertainment Capital of the World, boasting iconic resorts, luxury shopping, fine dining, electrifying nightlife, F1 racing, and a growing lineup of professional sports. Now, there's a perfect way to call Vegas home. Welcome to The Island at Lake Las Vegas - just 30 minutes from the Strip. This exclusive, guard-gated community offers stunning waterfront homes and custom waterfront lots. Plus, Nevada's tax-friendly policies mean no corporate or individual income taxes. Ready to make Las Vegas your home?

Illustrations are artistic only.

THEISLANDATLLV.COM

Gene Northup

License #S.0037249

702.497.0300

Gene.Northup@sothebysrealty.com





Welcome to Egress.

8 Chisel Crest Court, Henderson, Nevada

\$10,800,000

www.8chiselcrestcourt.com

Blue Heron Elite proudly presents Egress, a two-story Home that perfectly integrates with the serene mountain surroundings of Ascaya, a prestigious guard-gated community in Henderson, Nevada. Designed as part of Blue Heron Elite's Luminary Collection, Egress offers dazzling views of the Las Vegas Strip and mountains, five luxurious bedrooms, five full baths, and two half baths. The Home's spacious entertaining areas, including a media room and wet bar, are ideal for hosting unforgettable gatherings. Outside, the desert landscape, stunning pool, and calming spa await, providing a private oasis. With accommodations for five cars, this Home caters to car enthusiasts and guests alike.

5 Bedrooms

7 Bathrooms

7,050± sq.ft



Kaori Nagao-Chiti

BS.0145932

702.577.7659

kaori.nagaochiti@sothebysrealty.com



Randy Char

B.0143566.LLC

702.750.1092

randy.char@sothebysrealty.com



79420 Brookville

La Quinta, California | \$2,595,000 | [sothebysrealty.com/id/jd37nj](https://www.sothebysrealty.com/id/jd37nj)

With three bedrooms plus an office, five bathrooms, and nearly 4,500 square feet, Chez La Fleur is a stunning custom contemporary estate perfect for resort-style living.



49723 Avenida Montero

La Quinta, California | \$3,995,000

5 BD | 6 BA | [sothebysrealty.com/id/FJ87N2](https://www.sothebysrealty.com/id/FJ87N2)



77179 Calle Mazatlan

La Quinta, California | Price Upon Request

2 BD | 2 BA | Coming Soon



Robert Andrew Millar

Robert Andrew Millar | DRE# 02247534

760.808.1235

robert@robertandrewmillar.com

Desert Sotheby's International Realty | 78065 Main Street, Suite 101, La Quinta, California | [desertsothebysrealty.com](https://www.desertsothebysrealty.com)



74720 Old Prospector Trail

Palm Desert, California | \$3,890,000 | sothebysrealty.com/id/EBY6QV

With 5,749 square feet on 0.77 acres, this five bedroom, six bathroom, South Palm Desert Spanish Ranch is an idyllic family home where lasting memories are made.



73759 Amir Drive, Marrakesh Country Club

Palm Desert, California | \$1,575,000

3 BD | 3 BA | Furnished | sothebysrealty.com/id/V42TKB



75984 Altamira Drive

Indian Wells, California | \$1,929,000

3 BD | 3 BA | Furnished | sothebysrealty.com/id/6BLXHL



Kristen Murphy

Broker Associate | DRE# 01245493
760.799.0549

kristen.murphy@sothebysrealty.com



Michael Walton

Global Real Estate Advisor | DRE# 01893161
760.831.0628

michael.walton@sothebysrealty.com

Desert Sotheby's International Realty | 74-890 Highway 111, Indian Wells, California | desertsothebysrealty.com



Inspiration Point

Little Exuma, Exuma, The Bahamas

\$5,950,000

SIRbahamas.com/id/W2LNLS

Welcome to Inspiration Point - a beautifully redesigned 3,000 sq. ft. villa nestled on the tranquil shores near the Tropic of Cancer Beach in Little Exuma. This bespoke home has been thoughtfully reimagined to offer the ultimate in island living. From the unique third-floor patio, nestled like a bird's nest among the treetops, to the expansive oceanside deck and newly completed pool with breathtaking ocean views, every detail has been crafted to elevate relaxation and rejuvenation in this private sanctuary. With no direct neighbors, the villa offers complete privacy and is perched atop a ridge with a private pathway leading to the soft sands of the beach.

5 Bedrooms

5.5 Bathrooms

3,000 sq.ft



Sarah Chemaly
Estate Agent
+1 242.424.4764
sarah.chemaly@SIRbahamas.com



Deb Saunders
Estate Agent
+1 242.477.6574
deb.saunders@SIRbahamas.com





Sundara

Paradise Island, Nassau, The Bahamas

\$18,200,000

SIRbahamas.com/id/JKEGR3

Located within the gated-golf community of Ocean Club Estates on Paradise Island, Sundara is set across two impeccably manicured lots totaling 48,044 sq. ft. This yachtsman's dream situated only 30 miles from The Exumas, includes: 236 feet of private canal frontage; two docks, 80 and 40 feet long; dedicated captain's quarters; and a private marine fuel line. Owners have the option to become members of the Tom Weiskopf designed golf course and Club House. Furthermore, access to the nearby Four Seasons and Atlantis Resort promise enjoyment by land when not at sea.

8 Bedrooms

9.5 Bathrooms

19,508 sq.ft



The Ansell Group
Estate Agents
+1 242.427.0082
AnsellGroup@SIRbahamas.com





Savannah House

Windermere Island, Eleuthera, The Bahamas

\$3,795,000

SIRbahamas.com/id/JR4QJG

Savannah House is a serene oasis on the Island of Windermere in Central Eleuthera. David Hicks, the famous English Interior Decorator & Designer, meticulously constructed Savannah House with storm-safe cement artfully textured with island seashells and sand. His unique style of mixing antique and moderns furnishings, coupled with bold colours and contemporary art, can be seen throughout the home. A private pathway leads to a breathtaking 1.32-acre beachfront lot with 150 feet of beach frontage on five miles of pristine, untouched white sand that has a backdrop to stunning turquoise waters—perfect for those seeking unmatched seclusion, peace, or adventure.

4 Bedrooms

4.0 Bathrooms

2,500 sq.ft



Colleen Carey
Estate Agent
+1 242.818.6038
colleen.carey@SIRbahamas.com





Seafair

Harbour Island, Eleuthera, The Bahamas

\$15,950,000

SIRbahamas.com/id/9TXXT3

Seafair is an architectural triumph, a breathtaking three-story oceanfront estate on the famous Pink Sands Beach in Harbour Island. This exceptional retreat redefines luxury island living with its four expansive ocean-view bedrooms, each with its own private en-suite bathroom, along with a grand study and a state-of-the-art in-home gym, both thoughtfully designed to enhance the estate's versatility and grandeur. Perfectly positioned on 100 feet of linear beach frontage, Seafair offers direct access to one of the most stunning beaches in the world.

4 Bedrooms

6.5 Bathrooms

5,438 sq.ft



Colleen Carey
Estate Agent
+1 242.818.6038
colleen.carey@SIRbahamas.com



Omarino



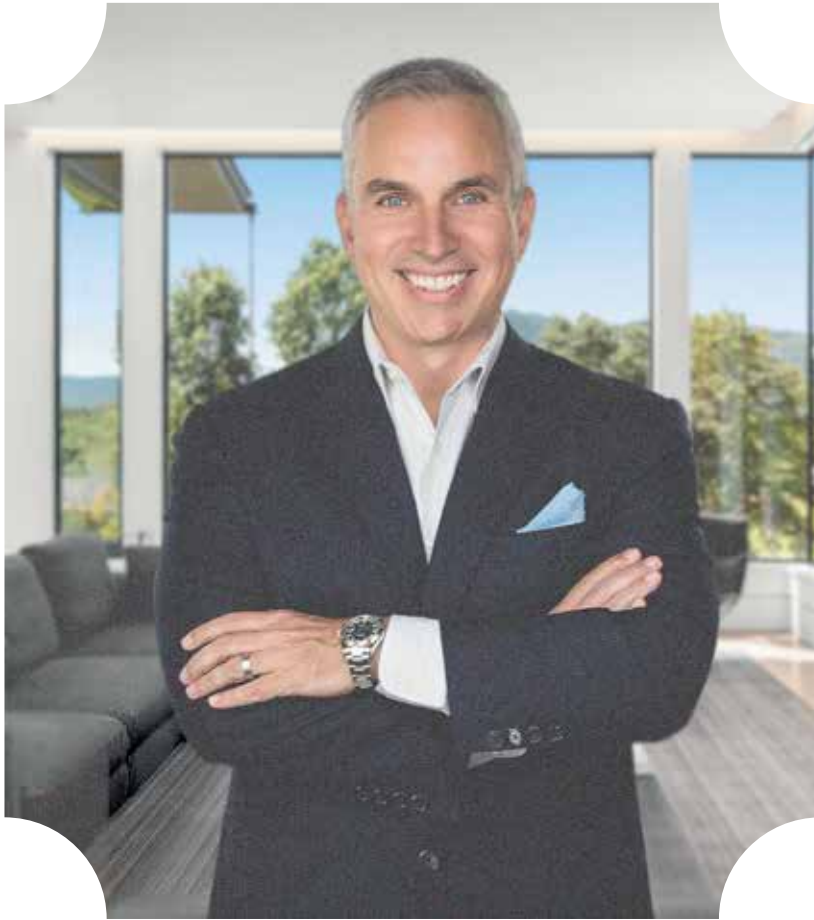
Manawaora Road, Parekura Bay Bay of Islands, Far North, Northland

Price Upon Request
sothebysrealty.com/id/RF733P

Ben Macky
Sales Associate
+6421937885
ben.macky@sothebysrealty.com

New Zealand Sotheby's International Realty | 159 Hurtsmere Road, Takapuna, Auckland, New Zealand | nzsothebysrealty.com

© 2025 Sotheby's International Realty. All Rights Reserved. Sotheby's International Realty® is a registered trademark and used with permission. Each Sotheby's International Realty office is independently owned and operated, except those operated by Sotheby's International Realty, Inc. All offerings are subject to errors, omissions, changes including price or withdrawal without notice. Equal Housing Opportunity.



It's All About Asheville. Let Me Be Your Guide.

From breathtaking mountain views to championship golf courses and bustling farmers' markets, Asheville offers a lifestyle like no other. As a dedicated global real estate advisor, I specialize in connecting buyers with the finest homes in Asheville and surrounding communities. Whether you're looking for a charming mountain cottage or a multi-million dollar estate, I'll help you find the perfect place to call home.

Beyond transactions, I value the lasting relationships I build with my clients. My goal isn't just to help you buy a home—it's to guide you with expertise, insight, and care, ensuring your journey is seamless and rewarding. Let's make your Asheville dream a reality.

markzilbert.premiersothebysrealty.com

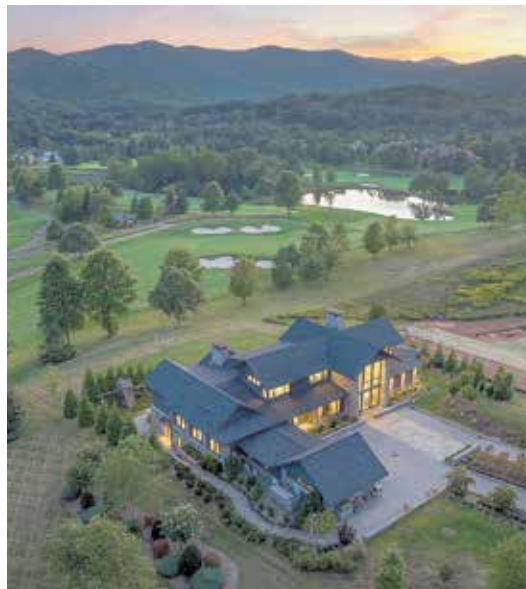
Mark Zilbert
Global Real Estate Advisor
828.582.0578
mark.zilbert@premiersir.com



515 Cloud Top Way

Arden, North Carolina | \$12,900,000

6 BD | 6.0 BA | sothebysrealty.com/id/FFVCC6



214 Folkestone Lane

Arden, North Carolina | \$11,900,000

7 BD | 8.5 BA | sothebysrealty.com/id/MWCL56

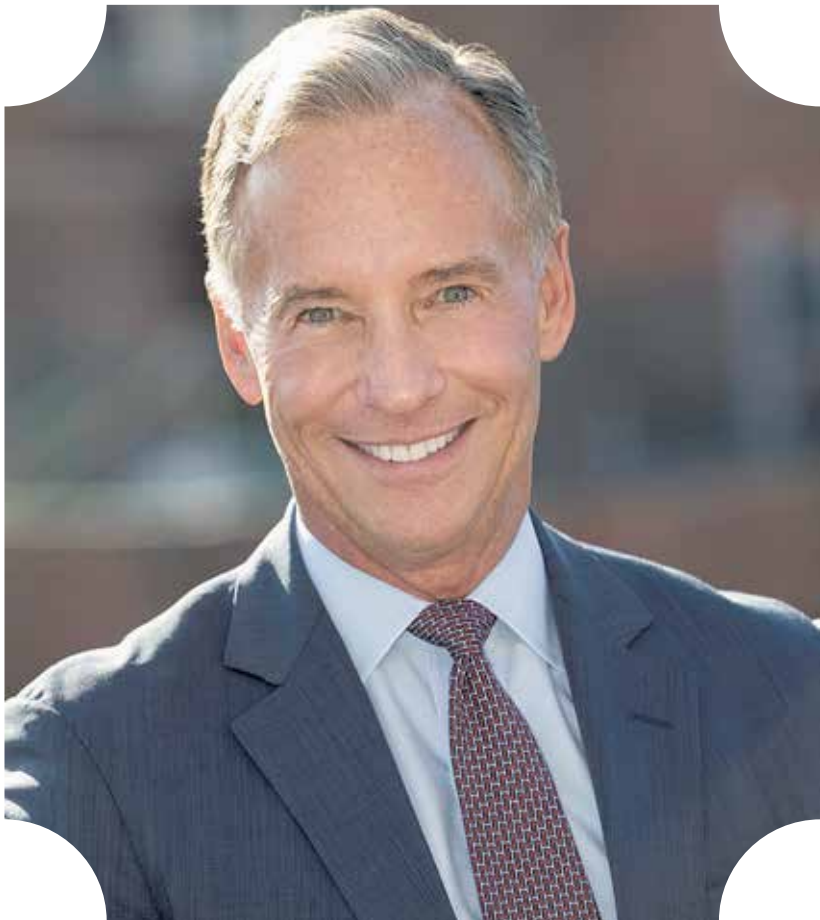


34 Foxbridge Way

Arden, North Carolina | \$1,850,000

3 BD | 3.5 BA | sothebysrealty.com/id/5JPRYM

Premier Sotheby's International Realty | 10 Brook St. Suite 130, Arden, North Carolina | sothebysrealty.com



The Right Home. The Right Move. The Right Broker.

Whether you're buying, selling, or making NYC your first, second or third home, you deserve the best! My network is unmatched. And if your journey takes you beyond the city, I'll connect you to one of 26,500 elite Sotheby's International Realty agents worldwide.

Seamless. Smart. Exceptional. Because finding the perfect home should feel effortless.

kevinbbrownnyc.com

Kevin Brown
Senior Global Real Estate Advisor, Associate Broker
M: 917.886.8850 | O: 212.60.7748
Kevin.Brown@Sothebys.Realty



33 East 74th Street, 5A
New York, New York | \$18,650,000
4 BD | 3.5 BA | 33E74St5A.com



19 East 92nd Street
New York, New York | \$18,500,000
5 BD | 5 BA | 2 HBA | 19East92Street.com



47 East 91st Street, 2
New York, New York | \$13,500,000
4 BD | 5.5 BA | 47East91Street2.com

Sotheby's International Realty - East Side Manhattan Brokerage | 650 Madison Avenue, New York, New York | sothebysrealty.com/nyc