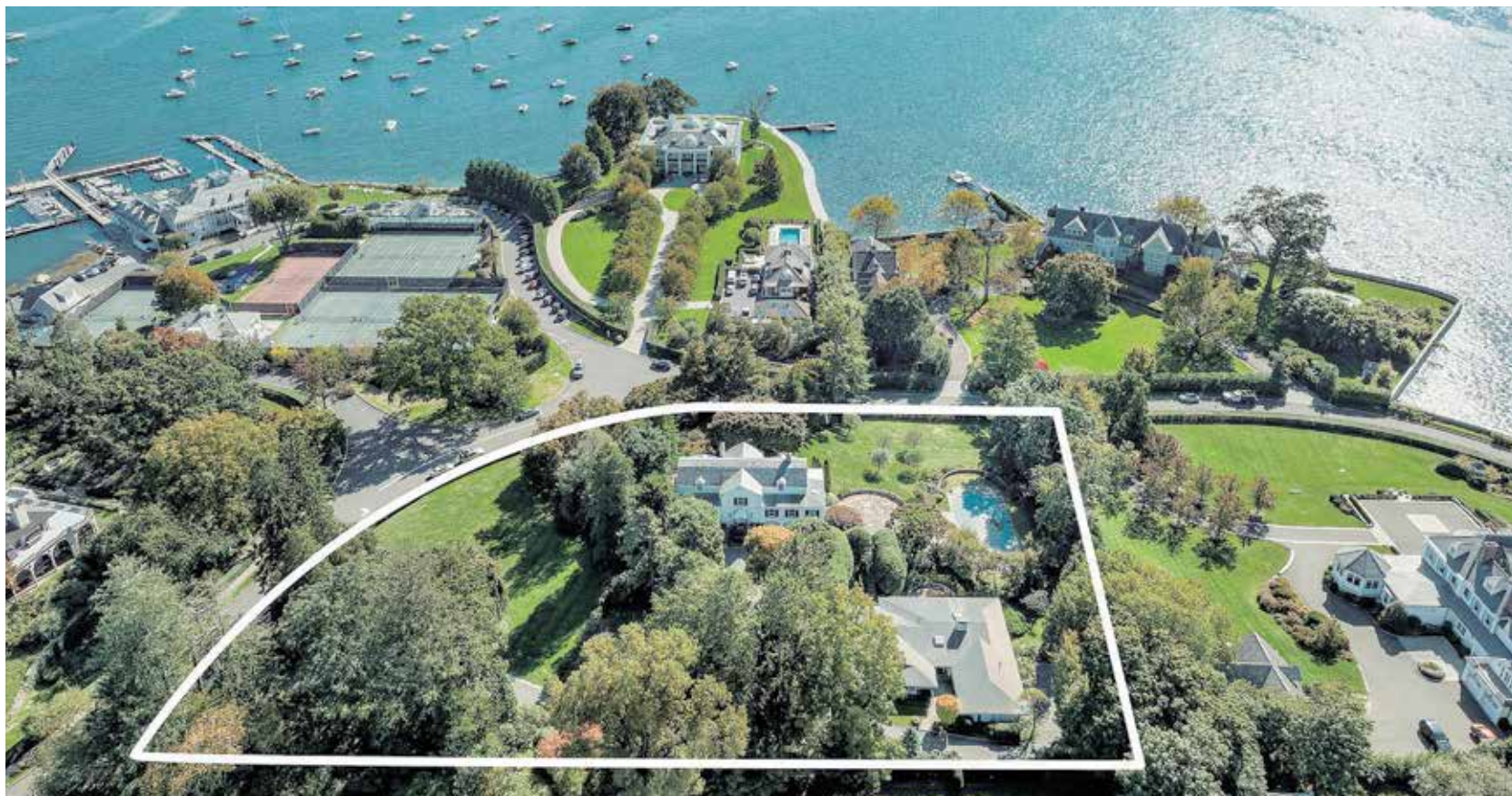




Move
beyond your
expectations.

Nothing compares.

[SOTHEBYSREALTY.COM](https://www.sothebysrealty.com)



280 & 278 Otter Rock Drive

First time on the market in over 40 years. An extraordinary opportunity to renovate or build new, custom house on 2.36 acres at a 30+ ft elevation overlooking Long Island Sound and the Belle Haven Club. There is currently a main house, guest cottage and oversized pool. Offering a unique vantage point for a spectacular new residence in the exclusive Belle Haven Association.

280 & 278 Otter Rock Drive
Greenwich, CT
5 BR | 6.5 BA | \$20,000,000
OtterRockDrive.com

JOSEPH BARBIERI
Senior Global Real Estate Advisor
203.940.2025
joseph.barbieri@sothebys.realty

SOTHEBY'S INTERNATIONAL REALTY - GREENWICH BROKERAGE | ONE PICKWICK PLAZA GREENWICH, CONNECTICUT 06830 | SOTHEBYSREALTY.COM



Table of Contents

4	NEW YORK
48	NEW YORK & CONNECTICUT
49	CONNECTICUT
60	NEW JERSEY
80	PENNSYLVANIA
86	NEW YORK- NEW HAMPSHIRE- VERMONT
87	MASSACHUSETTS
88	RHODE ISLAND
90	MAINE
91	NORTH CAROLINA
92	SOUTH CAROLINA
94	FLORIDA
105	TEXAS
107	COLORADO
108	NEVADA
110	CALIFORNIA
116	BAHAMAS



The Field Team Advantage

- + Market Specialization
- + Portfolio Advisement & Management
- + Negotiation & Pricing Experts
- + Global Desks
- + New Development Advisors
- + Geo-Targeted Market Partnerships

Visit [TheFieldTeam.com](https://www.TheFieldTeam.com)
212.606.7669
Nikki.Field@sothebys.realty



SOTHEBY'S INTERNATIONAL REALTY- EAST SIDE MANHATTAN BROKERAGE | 650 MADISON AVENUE NEW YORK, NEW YORK 10022 | [SOTHEBYSREALTY.COM/NYC](https://www.SOTHEBYSREALTY.COM/NYC)

© 2023 Sotheby's International Realty. All Rights Reserved. Sotheby's International Realty® is a registered trademark and used with permission. Each Sotheby's International Realty office is independently owned and operated, except those operated by Sotheby's International Realty, Inc. The Sotheby's International Realty network fully supports the principles of the Fair Housing Act and the Equal Opportunity Act.

UPPER EAST SIDE



Versace Grand Mansion

7 BR | 8.5 BA | \$60,000,000

5East64Street.com

UPPER EAST SIDE



Fabulous 16 Room Living on Fifth

6 BR | 6 BA | \$18,500,000

1010FifthAve3AD.com

UPPER EAST SIDE



Luxury Fifth Avenue Duplex

5 BR | 5.5 BA | \$12,850,000

955FifthAvenueDuplex.com

TRIBECA



Four Seasons Private Residences

3 BR | 4.5 BA | \$13,000,000

30ParkPlace75B.com

UPPER EAST SIDE



Bespoke Condo Duplex with Garden

5 BR | 4.5 BA | \$12,000,000

135East79StreetMaisE.com

MIDTOWN WEST



The Hampshire House

3 BR | 3 BA | \$12,000,000

150CPS3001.com

UPPER EAST SIDE



Park Avenue 11 Room Duplex

4 BR | 4.5 BA | \$11,500,000

840ParkAve.com

TRIBECA



New Development 91 Leonard Street

SPONSOR UNITS | \$3,800,000 - \$8,000,000

91LeonardTribeca.com

UPPER EAST SIDE



Triple Mint Masterpiece

4 BR | 4.5 BA | \$7,250,000

605ParkAvenue.com

VISIT THEFIELDTEAM.COM

212.606.7669

NIKKI.FIELD@SOTHEBYS.REALTY



SOTHEBY'S INTERNATIONAL REALTY - EAST SIDE MANHATTAN BROKERAGE | 650 MADISON AVENUE NEW YORK, NEW YORK 10022 | SOTHEBYSREALTY.COM/NYC

© 2023 Sotheby's International Realty. All Rights Reserved. Sotheby's International Realty® is a registered trademark and used with permission. Each Sotheby's International Realty office is independently owned and operated, except those operated by Sotheby's International Realty, Inc. The Sotheby's International Realty network fully supports the principles of the Fair Housing Act and the Equal Opportunity Act.

NEW YORK, NEW YORK



730 Park Avenue, Apartment 9A

5 BR | 4 BA | 3 HB | \$21,000,000

730ParkAve9A.com

NEW YORK, NEW YORK



640 Park Avenue, 3rd Floor

6 BR | 6.5 BA | \$19,900,000

640ParkAve.com

NEW YORK, NEW YORK



800 Park Avenue, 15th Floor

4 BR | 5.5 BA | \$13,500,000

800ParkAve15Floor.com

NEW YORK, NEW YORK



812 Park Avenue, Apartment 9/10B

4 BR | 4 BA | 2 HB | \$10,000,000

812ParkAve910B.com



SERENA BOARDMAN

Senior Global Real Estate Advisor, Associate Broker

212.606.7611 | serenaboardman.com

serena.boardman@sothebys.realty

NEW YORK, NEW YORK



4 East 66th Street, Apartment 7

5 BR | 5 BA | 2 HB | \$55,000,000

4East66.com

NEW YORK, NEW YORK



110 East 70th Street | Townhouse

7 BR | 7 BA | 2 HB | \$29,500,000

110East70Street.com

NEW YORK, NEW YORK



740 Park Avenue, Apartment 2/3D

5 BR | 6 BA | 2 HB | \$28,500,000

740ParkAve2D.com

NEW YORK, NEW YORK



1 Sutton Place South, Apartment 6A

5 BR | 6 BA | 2 HB | \$11,500,000

1SPS6A.com



SERENA BOARDMAN

Senior Global Real Estate Advisor, Associate Broker

212.606.7611 | serenaboardman.com

serena.boardman@sothebys.realty

NEW YORK, NEW YORK



1010 Fifth Avenue, Apartment 6A

4 BR | 4.5 BA | \$8,750,000

1010Fifth6A.com

NEW YORK, NEW YORK



1030 Fifth Avenue, Apartment 1W

2 BR | 2 BA | 2 HB | \$4,500,000

1030V.com

NEW YORK, NEW YORK



910 Fifth Avenue, Apartment 7C

2 BR | 2.5 BA | \$4,750,000

910FifthAve7C.com

NEW YORK, NEW YORK



322 West 57th Street, Apartment 49H

1 BR | 2.5 BA | \$3,750,000

322West57St49H.com



SERENA BOARDMAN

Senior Global Real Estate Advisor, Associate Broker

212.606.7611 | serenaboardman.com

serena.boardman@sothebys.realty

NEW YORK, NEW YORK



176 East 75th Street | Townhouse

5 BR | 4.5 BA | \$11,500,000

176East75Street.com

NEW YORK, NEW YORK



131 East 69th Street, 8th Floor

5 BR | 5.5 BA | \$8,000,000

131E69St8thFlr.com

NEW YORK, NEW YORK



765 Park Avenue, Apartment 6A

4 BR | 5.5 BA | \$7,750,000

765ParkAve6A.com

NEW YORK, NEW YORK



30 East 71st Street, Apartment 5A

4 BR | 4.5 BA | \$7,500,000

30East71Street5A.com



SERENA BOARDMAN

Senior Global Real Estate Advisor, Associate Broker

212.606.7611 | serenaboardman.com

serena.boardman@sothebys.realty



Cathy Taub

My industry rankings, 20+ years in residential real estate, corporate law firm experience and exceptional ongoing client relationships and referrals demonstrate that working with me is the right choice for you...

- #2 Sotheby's International Realty, NYC 2022
- #6 Sotheby's International Realty, Nationally 2022
- 10 years corporate transactional attorney
- Founding Co-Chair New York Residential Agent Continuum (NYRAC)
- Follow me on INSTAGRAM @cathy.taub

TRUSTWORTHY. SMART. SKILLED.

Associate Broker
Visit cathytaub.com
917.855.8466
cathy.taub@sothebys.realty

SOTHEBY'S INTERNATIONAL REALTY - EAST SIDE MANHATTAN BROKERAGE | 650 MADISON AVENUE NEW YORK, NEW YORK 10022 | SOTHEBYSREALTY.COM/NYC



555 West End Avenue, PHB

The Solarium PH is a one-of-a-kind 3 BR created from the former gymnasium of a converted landmarked school. Soaring ~20' ceilings create an astounding volume of space. Stunning in scale and luminosity, this dramatic condo has a private terrace, enormous skylight and a floor-to-ceiling window-wall along the south facade. The complete terms are in an Offering Plan available from the Sponsor. File No. CD14-0062.

\$18,000,000
3 BR | 3.5 BA
555WestEndAve.com

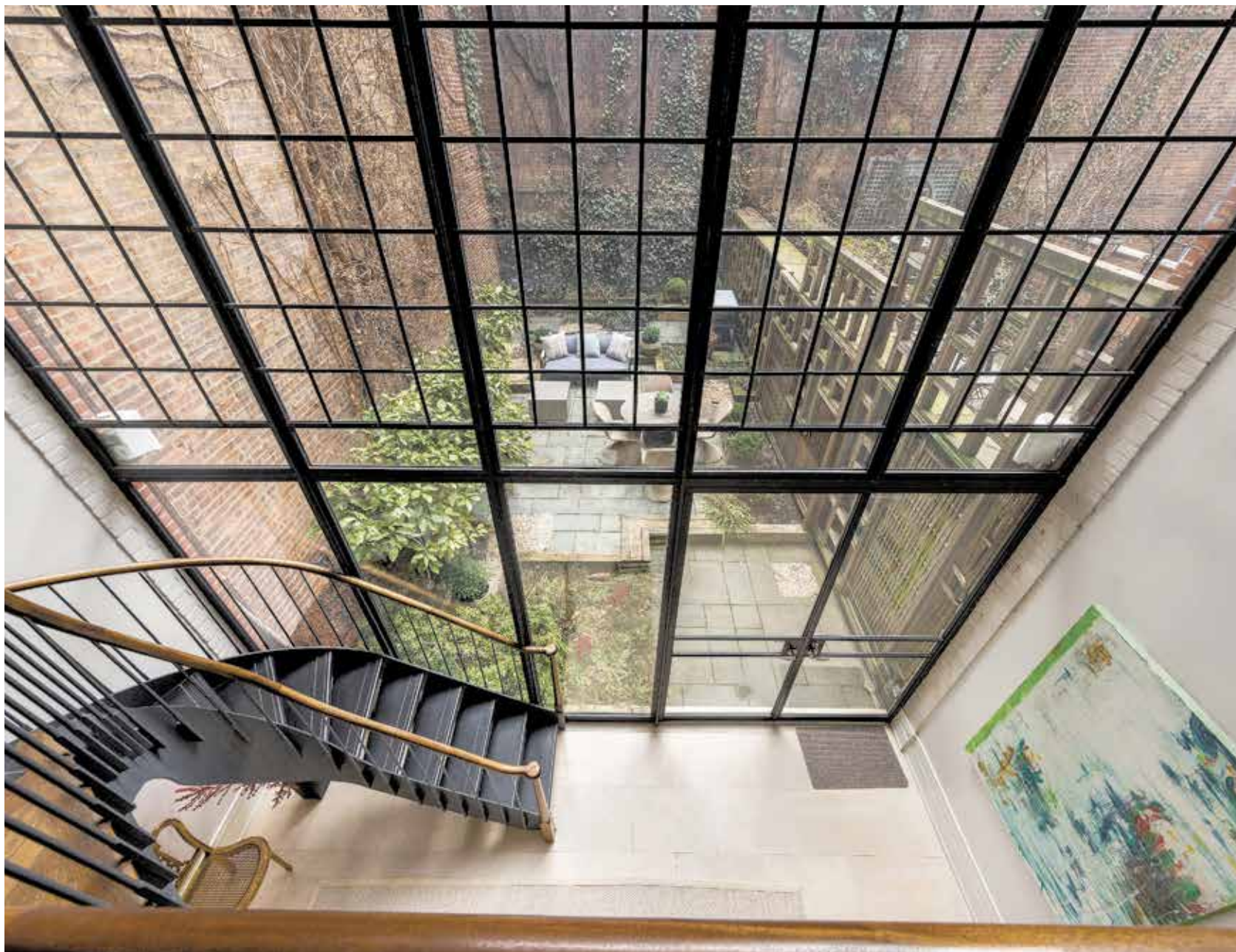


CATHY TAUB

Senior Global Real Estate Advisor, Associate Broker
917.855.8466 | cathytaub.com
cathy.taub@sothebys.realty

SOTHEBY'S INTERNATIONAL REALTY - EAST SIDE MANHATTAN BROKERAGE | 650 MADISON AVENUE NEW YORK, NEW YORK 10022 | SOTHEBYSREALTY.COM/NYC

© 2023 Sotheby's International Realty. All Rights Reserved. Sotheby's International Realty® is a registered trademark and used with permission. Each Sotheby's International Realty office is independently owned and operated, except those operated by Sotheby's International Realty, Inc. The Sotheby's International Realty network fully supports the principles of the Fair Housing Act and the Equal Opportunity Act.



164 East 70th Street

Gorgeously renovated, sun-flooded, chic yet unpretentious, this five bedroom brownstone has a spectacular double-height casement window rear facade and is a “best in class” offering on the Upper East Side’s prettiest townhouse block. Private garden and two additional outdoor spaces plus roof access. Move-in ready with a basketball court and golf putting green.

\$13,650,000
5 BR | 6 BA | 2 HB
164E70.com



CATHY TAUB

Senior Global Real Estate Advisor, Associate Broker
917.855.8466 | cathytaub.com
cathy.taub@sothebys.realty

SOTHEBY'S INTERNATIONAL REALTY - EAST SIDE MANHATTAN BROKERAGE | 650 MADISON AVENUE NEW YORK, NEW YORK 10022 | SOTHEBYSREALTY.COM/NYC

© 2023 Sotheby's International Realty. All Rights Reserved. Sotheby's International Realty® is a registered trademark and used with permission. Each Sotheby's International Realty office is independently owned and operated, except those operated by Sotheby's International Realty, Inc. The Sotheby's International Realty network fully supports the principles of the Fair Housing Act and the Equal Opportunity Act.



120 East 87th Street, P22

This 6 bedroom, 4,775 SF condo is a stunning oasis with a 2,725 SF wraparound terrace offering dramatic views in all directions. The open kitchen/great room is the perfect space for family and friends to congregate. Move-in ready and designed by acclaimed architect Steven Harris, the brilliant light and open city views are spectacular.

\$14,750,000
6 BR | 6.5 BA
120East87thStreetP22.com



CATHY TAUB

Senior Global Real Estate Advisor, Associate Broker
917.855.8466 | cathytaub.com
cathy.taub@sothebys.realty

NEW YORK, NEW YORK



550 Park Avenue, 6W

4 BR | 4.5 BA | \$4,995,000 550ParkAve6W.com

Elegance defined. 28' LR, FDR, 4BRs, 4.5 baths, EIK, Library in Top Park Avenue pre-war J.E.R. Carpenter co-op. 10'7" ceilings, grand-scaled rooms. Bring your architect.

NEW YORK, NEW YORK



27 West 67th Street, 1FW

2 BR | 2.5 BA | \$4,225,000 27West67St1FW.com

Entertain in this gorgeous, renovated 2BR duplex with a home office, EIK & impressive Great Room with 17' ceilings, stunning huge stained glass window & WBFP.



CATHY TAUB

Senior Global Real Estate Advisor, Associate Broker
917.855.8466 | cathytaub.com
cathy.taub@sothebys.realty



147 Waverly Place, Penthouse

This breathtaking Penthouse soars above the West Village and offers panoramic and protected views with complete privacy from every room. Encompassing the top two floors of the building, this smartly conceived duplex offers 3,975 of interior square feet, including “pin-drop quiet” bedrooms, with an additional 1,005 square feet of private roof terrace.

147 Waverly Place, PH
4 BR | 4 BA | \$17,550,000
147WaverlyPlacePH.com



STAN PONTE
Senior Global Real Estate Advisor
Associate Broker
646.489.3066
stan.ponte@sothebys.realty



MATTHEW FOX
Licensed Salesperson
646.238.0078
matthew.fox@sothebys.realty

SOTHEBY'S INTERNATIONAL REALTY - EAST SIDE MANHATTAN BROKERAGE | 650 MADISON AVENUE NEW YORK, NEW YORK 10022 | SOTHEBYSREALTY.COM/NYC

© 2023 Sotheby's International Realty. All Rights Reserved. Sotheby's International Realty® is a registered trademark and used with permission. Each Sotheby's International Realty office is independently owned and operated, except those operated by Sotheby's International Realty, Inc. The Sotheby's International Realty network fully supports the principles of the Fair Housing Act and the Equal Opportunity Act.

NEW YORK, NEW YORK



2 Park Place, 38B

2 BR | 2.5 BA | \$7,150,000

Woolworth38B.com

NEW YORK, NEW YORK



1172 Park Avenue, 3B

3 BR | 3 BA | \$2,450,000

1172ParkAve3B.com

NEW YORK, NEW YORK



419 East 57th Street, EM

3 BR | 2.5 BA | \$2,250,000

419East57StreetEM.com

NEW YORK, NEW YORK



134 Manhattan Avenue

5 BR | 3.5 BA | \$4,800,000

134Manhattan.com



STAN PONTE

Senior Global Real Estate Advisor, Associate Broker

646.489.3066

stan.ponte@sothebys.realty



234 West 138th Street

Rarely-available Georgian Revival-style townhouse in the grandest section of historic Striver's Row. This expansive property features five bedrooms, formal dining room, living room, library, eat-in-kitchen, windowed home office, kitchenette, quiet garden, six fireplaces, exceptional space for storage, and private parking.

234 West 138th Street
5 BR | 2.5 BA | \$3,250,000
234W138.com



STAN PONTE
Senior Global Real Estate Advisor
Associate Broker
646.489.3066
stan.ponte@sothebys.realty



COLIN MONTGOMERY
Associate Broker
646.319.3114
colin.montgomery@sothebys.realty

SOTHEBY'S INTERNATIONAL REALTY - EAST SIDE MANHATTAN BROKERAGE | 650 MADISON AVENUE NEW YORK, NEW YORK 10022 | SOTHEBYSREALTY.COM/NYC

© 2023 Sotheby's International Realty. All Rights Reserved. Sotheby's International Realty® is a registered trademark and used with permission. Each Sotheby's International Realty office is independently owned and operated, except those operated by Sotheby's International Realty, Inc. The Sotheby's International Realty network fully supports the principles of the Fair Housing Act and the Equal Opportunity Act.



Wendy Arriz Top NYC Producer

Wendy has consistently ranked among the top producers at Sotheby's International Realty, Inc. as well as America's Top Real Estate Agents by The Wall Street Journal/REAL Trends'. She has represented clients across Manhattan's luxury co-op, condo, and townhouse marketplaces across the city.

WENDY ARRIZ

Senior Global Real Estate Advisor

Associate Broker

917.361.5038 | wendyarriz.com

wendy.arriz@sothebys.realty

NEW YORK, NEW YORK



885 Park Avenue, 6C

4 BR | 4 BA | \$7,650,000

885ParkAve6C.com

NEW YORK, NEW YORK



139 East 79th Street, 6th Floor

4 BR | 4.5 BA | \$6,850,000

139E79th6FL.com

NEW YORK, NEW YORK



876 Park Avenue, 6S

4 BR | 2.5 BA | \$6,150,000

876ParkAve6S.com

SOTHEBY'S INTERNATIONAL REALTY - EAST SIDE MANHATTAN BROKERAGE | 650 MADISON AVENUE NEW YORK, NEW YORK 10022 | SOTHEBYSREALTY.COM/NYC

NEW YORK, NEW YORK



241 West 4th Street
7 BR | 8.5 BA | \$9,950,000
241West4thStreet.com

NEW YORK, NEW YORK



22 East 93rd Street
10 BR | 10 BA | \$9,950,000
22East93.com

NEW YORK, NEW YORK



25 East End Avenue, 12C
2 BR | 2 BA | \$2,850,000
25EastEnd12C.com

NEW YORK, NEW YORK



1165 Fifth Avenue, 8C
3 BR | 3 BA | \$3,695,000
1165FifthAve8C.com



WENDY ARRIZ
Senior Global Real Estate Advisor, Associate Broker
917.361.5038 | wendyarriz.com
wendy.arriz@sothebys.realty

NEW YORK, NEW YORK



520 West 28th Street, 30

2 BR | 2.5 BA | \$3,950,000

520W28th30.com

NEW YORK, NEW YORK



1235 Park Avenue, 9A

2 BR | 2 BA | \$1,995,000

1235ParkAvenue9Acom

NEW YORK, NEW YORK



36 Sutton Place South, 3G

1 BR | 1 BA | \$650,000

36SuttonPls3G.com

NEW YORK, NEW YORK



155 East 49th Street, 6B

1 BR | 1 BA | \$475,000

155E49th6B.com



WENDY ARRIZ

Senior Global Real Estate Advisor, Associate Broker

917.361.5038 | wendyarriz.com

wendy.arriz@sothebys.realty



1160 Park Avenue, Apartment 14AC

Rare opportunity to move right into this exquisite one-of-kind apartment, a stunning and light-filled sanctuary in one of Park Avenue's most distinguished white-glove cooperatives. The eight-room A line has been combined with an additional room and bathroom from the C line to create an apartment unlike any other in the building.

1160 Park Avenue, 14AC
4 BR | 3.5 BA | \$7,200,000
1160ParkAve14AC.com



LISA LARSON

Senior Global Real Estate Advisor, Associate Broker
917.678.7042 | lisailarson.com
lisa.larson@sothebys.realty

SOTHEBY'S INTERNATIONAL REALTY - EAST SIDE MANHATTAN BROKERAGE | 650 MADISON AVENUE NEW YORK, NEW YORK 10022 | SOTHEBYSREALTY.COM/NYC

© 2023 Sotheby's International Realty. All Rights Reserved. Sotheby's International Realty® is a registered trademark and used with permission. Each Sotheby's International Realty office is independently owned and operated, except those operated by Sotheby's International Realty, Inc. The Sotheby's International Realty network fully supports the principles of the Fair Housing Act and the Equal Opportunity Act.

NEW YORK, NEW YORK



119 East 84th Street, 3B

2 BR | 2 BA | \$1,575,000 119East84St3B.com

Welcome home to this rarely available gracious classic 5 room apartment, wonderfully located on a charming tree-lined block just off Park Avenue.

NEW YORK, NEW YORK



163 East 81st Street, 8C

2 BR | 1 BA | \$1,095,000 163East81stStreet6D.com

Wonderful opportunity to move right in to this beautiful prewar two-bedroom apartment, perfectly located in a full-service boutique cooperative.



LISA LARSON
Senior Global Real Estate Advisor, Associate Broker
917.678.7042 | lisailarson.com
lisa.larson@sothebys.realty



718 Broadway, Apartment 3B

Do not miss this rare opportunity to live in a stunning quintessential loft situated in a classic prewar cast iron building, perfectly located in the heart of vibrant NoHo, close to Washington Square Park. At nearly 1400 square feet, this oversized one-bedroom, one-bathroom home was recently renovated to the highest standards, displaying impeccable style and craftsmanship.

718 Broadway, 3B
1 BR | 1 BA | \$1,875,000
718Broadway3B.com



LISA LARSON
Senior Global Real Estate Advisor, Associate Broker
917.678.7042 | lisailarson.com
lisa.larson@sothebys.realty

SOTHEBY'S INTERNATIONAL REALTY - EAST SIDE MANHATTAN BROKERAGE | 650 MADISON AVENUE NEW YORK, NEW YORK 10022 | SOTHEBYSREALTY.COM/NYC

© 2023 Sotheby's International Realty. All Rights Reserved. Sotheby's International Realty® is a registered trademark and used with permission. Each Sotheby's International Realty office is independently owned and operated, except those operated by Sotheby's International Realty, Inc. The Sotheby's International Realty network fully supports the principles of the Fair Housing Act and the Equal Opportunity Act.



875 Park Avenue, Apartment 8/9D

This Park Avenue duplex home has six bedrooms, four and a half baths, with exceptional entertaining space. Feels like a townhouse in the sky. A semi private elevator landing, apartment gets incredible light all day with 10 foot ceilings and beautiful Park Avenue exposures.

875 Park Avenue 8/9D
6 BR | 4.5 BA | \$11,000,000
875ParkAve8-9D.com



LINDA M. MALONEY

Senior Global Real Estate Advisor, Associate Broker
212.606.7694 | lindamaloneynyc.com
linda.maloney@sothebys.realty

SOTHEBY'S INTERNATIONAL REALTY - EAST SIDE MANHATTAN BROKERAGE | 650 MADISON AVENUE NEW YORK, NEW YORK 10022 | SOTHEBYSREALTY.COM/NYC

© 2023 Sotheby's International Realty. All Rights Reserved. Sotheby's International Realty® is a registered trademark and used with permission. Each Sotheby's International Realty office is independently owned and operated, except those operated by Sotheby's International Realty, Inc. The Sotheby's International Realty network fully supports the principles of the Fair Housing Act and the Equal Opportunity Act.



Dramatic Central Park Views

Magnificent Central Park views from this massive, elegant, and rare 14-room apartment with 55' frontage on Central Park and centered high above the Conservatory Pond. This full-floor Fifth Avenue residence with exceptionally large rooms, has 4 exposures, offers 5,740 sq. ft., 6 bedrooms, 5 baths, 10' 6" ceilings, 4 fireplaces, herringbone floors, original moldings, dazzling light. Gold Coast location.

927 Fifth Avenue, 9th Floor
927FifthAvenue.com
New Price: \$28,750,000



LOUISE C. BEIT

Senior Global Real Estate Advisor, Associate Broker
917.544.5515 | Louisebeit.com
Louise.Beit@sothebys.realty

SOTHEBY'S INTERNATIONAL REALTY - EAST SIDE MANHATTAN BROKERAGE | 650 MADISON AVENUE NEW YORK, NEW YORK 10022 | SOTHEBYSREALTY.COM/NYC

© 2023 Sotheby's International Realty. All Rights Reserved. Sotheby's International Realty® is a registered trademark and used with permission. Each Sotheby's International Realty office is independently owned and operated, except those operated by Sotheby's International Realty, Inc. The Sotheby's International Realty network fully supports the principles of the Fair Housing Act and the Equal Opportunity Act.

NEW YORK, NEW YORK



1010 Fifth Avenue, 12C

3 BR | 2.5 BA | \$5,495,000 1010FifthAve12C.com

WOW! This stunning, beautifully renovated, high-floor, sun-flooded apartment with open views is breathtaking.

KATHRYN STEINBERG Senior Global Real Estate Advisor, Associate Broker
212.606.7756 kathryn.steinberg@sothebys.realty

NEW YORK, NEW YORK



3 East 77th Street, 3A

2 BR | 2 BA | \$3,350,000 3East77St3A.com

This elegant, classic Rosario Candela apartment has been beautifully and discretely renovated to perfection.

ARMIN B. ALLEN Senior Global Real Estate Advisor, Associate Broker
917.533.7949 armin.allen@sothebys.realty

KATHRYN STEINBERG Senior Global Real Estate Advisor, Associate Broker
212.606.7756 kathryn.steinberg@sothebys.realty

SOTHEBY'S INTERNATIONAL REALTY - EAST SIDE MANHATTAN BROKERAGE | 650 MADISON AVENUE NEW YORK, NEW YORK 10022 | SOTHEBYSREALTY.COM/NYC



485 Park Avenue, 12th Floor

Welcome to this magnificent full floor mint condition apartment at 485 Park Avenue. With about 5,000 sqft and 10'8" ceilings, it is perfect for Art and Entertaining. This home mixes contemporary elements creating a beautiful 4 bedroom and 4.5-bathroom luxurious space that encompasses the whole 12th floor of this elegant white glove building.



HARRY NASSER

Senior Global Real Estate Advisor, Associate Broker
917.520.8519 | harrynasser.com
harry.nasser@sothebys.realty

485 Park Avenue 12th Floor
4 BR | 4.5 BA | \$7,995,000
485ParkAvenue12thFlr.com

SOTHEBY'S INTERNATIONAL REALTY - EAST SIDE MANHATTAN BROKERAGE | 650 MADISON AVENUE NEW YORK, NEW YORK 10022 | SOTHEBYSREALTY.COM/NYC

© 2023 Sotheby's International Realty. All Rights Reserved. Sotheby's International Realty® is a registered trademark and used with permission. Each Sotheby's International Realty office is independently owned and operated, except those operated by Sotheby's International Realty, Inc. The Sotheby's International Realty network fully supports the principles of the Fair Housing Act and the Equal Opportunity Act.

NEW YORK, NEW YORK



211 Central Park West, 5G

4 BR | 5 BA | \$8,950,000

211CPW5G.com

NEW YORK, NEW YORK



245 West 14th Street, PH

3 BR | 3 BA | \$6,850,000

245West14StPH.com

NEW YORK, NEW YORK



136 East 79th Street, 5B

4 BR | 4 BA | \$4,150,000

136East79Street5B.com

NEW YORK, NEW YORK



201 East 80th Street, 12AB

4 BR | 3 BA | \$3,395,000

201East80Street12AB.com



JULIETTE R. JANSSENS

Senior Global Real Estate Advisor
Associate Broker
917.748.0118
juliette.janssens@sothebys.realty



ALLISON B. KOFFMAN

Senior Global Real Estate Advisor
Associate Broker
917.226.4320
allison.koffman@sothebys.realty



1485 Fifth Avenue, Apartment 14A

Originally a five bedroom, this serene and spacious grand customized three bedroom at FXFowle's Fifth on the Park overlooks Marcus Garvey Park and surrounding brownstones, offers views to Yankee Stadium, the George Washington Bridge, a private pool, a roof deck with grilling stations, a deeded parking space, a home office, and tax abatement through 2031.

1485 Fifth Avenue, 14A
3 BR | 3 BA | \$3,250,000
1485Fifth14A.com



TARA STEPPACHER
Licensed Real Estate Salesperson
347.461.3131
tara.steppacher@sothebys.realty

SOTHEBY'S INTERNATIONAL REALTY - EAST SIDE MANHATTAN BROKERAGE | 650 MADISON AVENUE NEW YORK, NEW YORK 10022 | SOTHEBYSREALTY.COM/NYC

© 2023 Sotheby's International Realty. All Rights Reserved. Sotheby's International Realty® is a registered trademark and used with permission. Each Sotheby's International Realty office is independently owned and operated, except those operated by Sotheby's International Realty, Inc. The Sotheby's International Realty network fully supports the principles of the Fair Housing Act and the Equal Opportunity Act.

NEW YORK, NEW YORK



28 East 10th Street, 11D

2 BR | 1.5 BA | \$2,995,000 28East10Street11D.com

Devonshire House is a classic pre-war condominium located in the heart of Greenwich Village.

NEW YORK, NEW YORK



350 West 57th Street, 11 J-I

3 BR | 2 BA | \$2,950,000 ParcVendome11J-I.com

HISTORIC PARC VENDOME CONDOMINIUM Known as one of the city's more celebrated buildings, with beautiful English gardens for residence owners to enjoy.



OLGA REINDLOVA "NEULIST"

Senior Global Real Estate Advisor, Associate Broker

917.821.1116 | olganeulist.com

olga.neulist@sothebys.realty

SOTHEBY'S INTERNATIONAL REALTY - EAST SIDE MANHATTAN BROKERAGE | 650 MADISON AVENUE NEW YORK, NEW YORK 10022 | SOTHEBYSREALTY.COM/NYC



A Broker With (a) Spring in Her Step

Someone with boundless energy. Willing to go above and beyond. Someone with whom people want to work. With a command of the NYC market as well as how to market. Who puts her heart into everything she does and truly cares.

ELIZABETH O'NEILL

Associate Broker

212.606.4185 | elizabethoneillnyc.com

elizabeth.oneill@sothebys.realty

NEW YORK, NEW YORK



255 West End Avenue, 7C

1 BR | 1 BA | \$725,000

255WestEndAve7C.com

NEW YORK, NEW YORK



400 East 56th Street, 8E/F

3 BR | 3.5 BA | \$2,995,000

400East56St8EF.com

SOTHEBY'S INTERNATIONAL REALTY - EAST SIDE MANHATTAN BROKERAGE | 650 MADISON AVENUE NEW YORK, NEW YORK 10022 | SOTHEBYSREALTY.COM/NYC

© 2023 Sotheby's International Realty. All Rights Reserved. Sotheby's International Realty® is a registered trademark and used with permission. Each Sotheby's International Realty office is independently owned and operated, except those operated by Sotheby's International Realty, Inc. The Sotheby's International Realty network fully supports the principles of the Fair Housing Act and the Equal Opportunity Act.

NEW YORK, NEW YORK



535 East 86th Street, PHB

3 BR | 3.5 BA | \$3,995,000

252East57Street38-C.com

CRAIG GEORGE | KEVIN BROWN

917.886.4760 craig.george@sothebys.realty

NEW YORK, NEW YORK



360 East 89th Street, 21B

2 BR | 2 BA | \$2,699,000

360East89St21B.com

LISA MAYSONET

917.699.1050 lisa.maysonet@sothebys.realty

NEW YORK, NEW YORK



400 East 51st Street, 20A

2 BR | 3 BA | \$2,595,000

400East51St20A.com

LESLIE S MODELL | MARILYN BLUME

917.488.5374 leslies.modell@sothebys.realty

NEW YORK, NEW YORK



8 East 83rd Street, 2D

2 BR | 2 BA | \$1,995,000

8East83Street2D.com

LESLIE S MODELL

917.488.5374 leslies.modell@sothebys.realty

NEW YORK, NEW YORK



10 East End Avenue, 5G

3 BR | 3 BA | \$1,800,000

10EastEndAve5G.com

PHYLLIS J GALLAWAY

917.769.7079 phyllis.gallaway@sothebys.realty

NEW YORK, NEW YORK



25 Columbus Circle, 75CE

5 BR | 6.5 BA | \$125,000/MONTH

25ColumbusCircle75CE.com

ELIZABETH LEE SAMPLE | BRENDA POWERS

917.364.2371 elizabeth.sample@sothebys.realty

SOTHEBY'S INTERNATIONAL REALTY - EAST SIDE MANHATTAN BROKERAGE | 650 MADISON AVENUE NEW YORK, NEW YORK 10022 | SOTHEBYSREALTY.COM/NYC

NEW YORK, NEW YORK



995 Fifth Avenue, 11S

5 BR | 6.5 BA | \$26,000,000

995FifthAvenue11S.com

PATRICIA WHEATLEY | SHEILA ELLIS
212.606.7613 pat.wheatley@sothebys.realty

NEW YORK, NEW YORK



15 East 70th Street, 5B

3 BR | 3.5 BA | \$14,250,000

15East70St5B.com

ELIZABETH M. HERZ | PHYLLIS GALLAWAY
917.327.2147 elizabeth.herz@sothebys.realty

NEW YORK, NEW YORK



136 East 79th Street, 14A

5 BR | 5.5 BA | \$14,000,000

136East79th14A.com

SERENA BOARDMAN
917.667.2468 serena.boardman@sothebys.realty

NEW YORK, NEW YORK



212 West 18th Street, 19C

2 BR | 2.5 BA | \$10,950,000

212West18St19C.com

JEFFREY FIRTH
212.606.7673 jeffrey.firth@sothebys.realty

NEW YORK, NEW YORK



475 Park Avenue, 11BC

3 BR | 4 BA | \$5,940,000

475ParkAvenue11BC.com

LOUISE C. BEIT
917.544.5515 louise.beit@sothebys.realty

NEW YORK, NEW YORK



252 East 57th Street, 38-C

3 BR | 3 BA | \$4,495,000

252East57Street38-C.com

ROBIN L ROTHMAN
917.282.6064 robin.rothman@sothebys.realty

SOTHEBY'S INTERNATIONAL REALTY - EAST SIDE MANHATTAN BROKERAGE | 650 MADISON AVENUE NEW YORK, NEW YORK 10022 | SOTHEBYSREALTY.COM/NYC

SOHO



10 Sullivan Street, Apt. 7A

3 BR | 3.5 BA | \$8,750,000

10Sullivan7A.com

UPPER EAST SIDE



784 Park Avenue, Apt. 8B

3 BR | 4 BA | \$6,250,000

784ParkAvenue8B.com

FLATIRON



40 East 19th Street, 5

3 BR | 2.5 BA | \$5,495,000

40East19th5.com

UPPER EAST SIDE



70 East 96th Street, Apt. 16A

3 BR | 3 BA | \$2,395,000

70E96St16A.com



The Stein Team | Ranked #3 Sales Team Nationwide at Sotheby's International Realty, Inc.

Jeremy and Robin Stein | Senior Global Real Estate Advisors, Associate Brokers

917.854.4411 | steinteam@sothebyshomes.com

SOTHEBY'S INTERNATIONAL REALTY - DOWNTOWN MANHATTAN BROKERAGE | 149 FIFTH AVENUE, 4TH FL NEW YORK, NY 10010 | SOTHEBYSREALTY.COM/NYC

NOLITA



293 Lafayette Street, PHIV

4 BR | 5.5 BA | \$35,000,000

PuckPHIV.com

BEEKMAN PLACE



435 East 52nd Street, 8/9C

4 BR | 4 BA | 2HA | \$6,950,000

435East52ndSt8-9C.com

CHELSEA



147 West 15th Street, PH9S

2 BR | 2.5 BA | \$5,600,000

147West15PH.com

UPPER EAST SIDE



37 East 67th Street, PHAB

3 BR | 3 BA | \$3,295,000

37E67thStPHAB.com



The Stein Team | Ranked #3 Sales Team Nationwide at Sotheby's International Realty, Inc.

Jeremy and Robin Stein | Senior Global Real Estate Advisors, Associate Brokers

917.854.4411 | steinteam@sothebyshomes.com

UPPER WEST SIDE



328 West 108th Street

6 BR | 4 BA | 3 HB | \$12,500,000

328West108thSt.com

MICHAEL SIEGER

917.533.8599 michael.sieger@sothebys.realty

CHELSEA



455 West 24th Street

4 BR | 2 BA | 2 HB | \$8,700,000

455West24townhouse.com

MARA FLASH BLUM | NIKKI FIELD

917.607.7456 marafash.blum@sothebys.realty

UPPER EAST SIDE



907 Fifth Avenue, Maisonette

3 BR | 3.5 BA | \$6,650,000

907FifthAveMaisonette.com

JEREMY STEIN

917.854.4411 jeremy.stein@sothebys.realty

TRIBECA



415 Greenwich Street, THA

4 BR | 4.5 BA | \$6,250,000

415GreenwichStreetTHA.com

HEATHER DELEONARDIS

917.886.9219 heather.deleonardis@sothebys.realty

SOHO



139 Spring Street, 3B

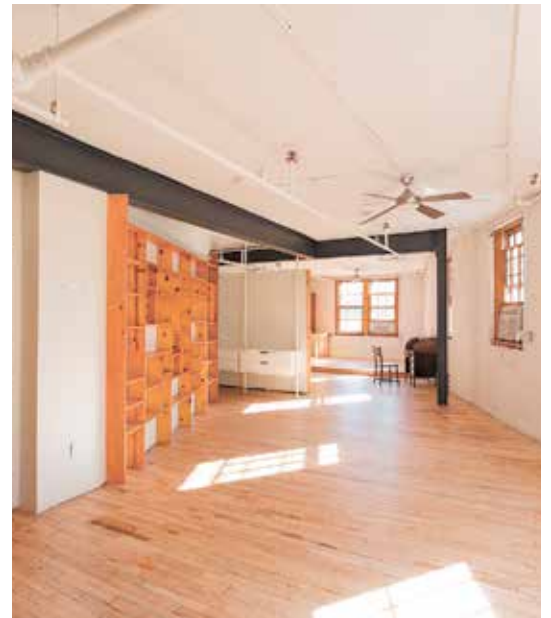
2 BR | 2 BA | \$5,000,000

139SpringSt3B.com

TORSTEN KRINES

212.431.2471 torsten.krines@sothebys.realty

SOHO



210 Spring Street 5th Floor

2 BR | 2 BA | \$3,500,000

210SpringSt5.com

JOE DAVILA

917.771.3787 joe.davila@sothebys.realty

SOTHEBY'S INTERNATIONAL REALTY - DOWNTOWN MANHATTAN BROKERAGE | 149 FIFTH AVENUE, 4TH FL NEW YORK, NY 10010 | SOTHEBYSREALTY.COM/NYC

GREENWICH VILLAGE



26 Washington Square N

10 BR | 3 BA | 2HB | \$29,950,000

26WashingtonSquareN.com

TORSTEN KRINES | FRED WILLIAMS

917.907.3747 torsten.krines@sothebys.realty

TRIBECA



49 Chambers Street PHB

3 BR | 5 BA | \$8,995,000

49ChambersStPHB.com

TOM DOYLE

212.431.2474 tom.doyle@sothebys.realty

BROOKLYN HEIGHTS



76 Willow Street

5 BR | 3.5 BA | \$7,250,000

76WillowSt.com

THE HEYMAN TEAM

646.431.5764 theheymanteam@sothebys.com

TRIBECA



463 Greenwich Street, Maisonette

3 BR | 3 BA | \$4,850,000

463GreenwichSt1.com

MARK AMADEI | JONATHAN HETTINGER

917.207.0374 mark.amadei@sothebys.realty

GREENWICH VILLAGE



88 Washington Place, Apt. 5C

3 BR | 3.0 BA | \$4,290,000

88Washington5C.com

KAPTAN UNUGUR

917.405.7087 kaptan.unugur@sothebys.realty

CHELSEA



135 West 14th Street, 5

2 BR | 2 BA | \$3,350,000

135West14thSt5.com

BRYAN BALTIMORE

813.323.4521 bryan.baltimore@sothebys.realty

SOTHEBY'S INTERNATIONAL REALTY - DOWNTOWN MANHATTAN BROKERAGE | 149 FIFTH AVENUE, 4TH FL NEW YORK, NY 10010 | SOTHEBYSREALTY.COM/NYC



Forest Hills Gardens, NYC

With timeless elegance, style and grace this classic Arts & Crafts Tudor is situated on Embassy Row in Forest Hills Gardens. Only 15 minutes from Manhattan, Forest Hills Gardens, with its tree lined, winding streets and architecturally distinctive homes, is world's apart from the noise and congestion of city life. Enjoy the best of urban & suburban, a country club setting right in the heart of NYC!

255 Greenway North, Forest Hills Gardens
6 Bedrooms | 6 Bathrooms
sothebysrealty.com/id/V56M8D

ROBERT HOF
Primary Broker
718.268.1045
terrace@terracesothebysrealty.com

TERRACE SOTHEBY'S INTERNATIONAL REALTY | 16 STATION SQUARE | FOREST HILLS | NEW YORK | 11375 | FORESTHILLSREALESTATE.COM

© 2023 Sotheby's International Realty. All Rights Reserved. Sotheby's International Realty® is a registered trademark and used with permission. Each Sotheby's International Realty office is independently owned and operated, except those operated by Sotheby's International Realty, Inc. The Sotheby's International Realty network fully supports the principles of the Fair Housing Act and the Equal Opportunity Act.



Daniel
Gale

Sotheby's
INTERNATIONAL REALTY



"Merchant House"

An elegant 1848 Italianate-style townhouse nestled in the charming neighborhood of Boerum Hill, Brooklyn. This single-family home is a rare gem listed on the National Register of Historic Places. The spacious home is among several classic townhouses on this famed block, and offers a coveted 25-foot width with seven bedrooms, three full baths and one half bath.

302 State Street
7 BR | 3.5 BA | \$6,000,000
danielgale.com/listing/dgid805511



TONY FANNING
Associate Real Estate Broker
Silver Circle of Achievement
c.347.613.8512
tonyfanning@danielgale.com



AROZA SANJANA
Associate Real Estate Broker
Gold Circle of Excellence
c.917.930.6500
arozasanjana@danielgale.com

PARK SLOPE OFFICE | 89 7TH AVENUE, BROOKLYN, NY 11217 | DANIELGALE.COM

© 2023 Sotheby's International Realty. All Rights Reserved. Sotheby's International Realty® is a registered trademark and used with permission. Each Sotheby's International Realty office is independently owned and operated, except those operated by Sotheby's International Realty, Inc. The Sotheby's International Realty network fully supports the principles of the Fair Housing Act and the Equal Opportunity Act.



Daniel
Gale

Sotheby's
INTERNATIONAL REALTY



"Hideaway"

Locust Valley, NY. Stately 8-bedroom brick Colonial set on 8.11-acres of sweeping green lawns, trees and trimmed hedges. Spectacular heated saltwater swimming pool and 2-bedroom pool house. All-weather hard surface tennis court and groomed par-three golf hole with four tee boxes. Custom millwork, distinguished fireplace mantles, layered crown molding and tasteful details throughout.

343 Duck Pond Road
8 BR | 7.55 BA | \$7,900,000
danielgale.com/listing/dgid69774



CHRISTINA PORTER
Associate Real Estate Broker
Gold Circle of Excellence
c.516.835.5512
christinaporter@danielgale.com



CHRISTINA TEAGLE
Real Estate Salesperson
Gold Circle of Excellence
c.516.635.8679
christinateagle@danielgale.com

LOCUST VALLEY OFFICE | 1 BUCKRAM ROAD, LOCUST VALLEY, NY 11560 | DANIELGALE.COM

© 2023 Sotheby's International Realty. All Rights Reserved. Sotheby's International Realty® is a registered trademark and used with permission. Each Sotheby's International Realty office is independently owned and operated, except those operated by Sotheby's International Realty, Inc. The Sotheby's International Realty network fully supports the principles of the Fair Housing Act and the Equal Opportunity Act.



Daniel
Gale

Sotheby's
INTERNATIONAL REALTY



"Carriage House"

Pending in only 17 days.

Shelter Island, NY - Extraordinary Shelter Island Waterfront Estate. Originally built in 1888, this magnificent home was reimagined, renovated, and expanded in 2010. Sited on 1.7 acres overlooking Dering Harbor this treasure features interior and exterior spaces, with views and amenities beyond.

29 Winthrop Road
6 BR | 6.5555 BA | \$9,499,000
danielgale.com/listing/dgid786671



DEBORAH PIRRO
Real Estate Salesperson
Gold Circle of Excellence
c.516.637.5786
deborahpirro@danielgale.com

HAMPTONS OFFICE | 100 MAIN STREET, WESTHAMPTON BEACH, NEW YORK 11978 | DANIELGALE.COM

© 2023 Sotheby's International Realty. All Rights Reserved. Sotheby's International Realty® is a registered trademark and used with permission. Each Sotheby's International Realty office is independently owned and operated, except those operated by Sotheby's International Realty, Inc. The Sotheby's International Realty network fully supports the principles of the Fair Housing Act and the Equal Opportunity Act.



Daniel
Gale

Sotheby's
INTERNATIONAL REALTY

ORIENT, NY



1600 Hillcrest Drive

6 BR | 5 FULL & 2 HALF BA | \$2,650,000 | MLS# 3435799

Elevated 360 water-views, 6,600 sqft. of finished living space, 1 acre, heated in-ground pool, roof top deck, home theatre, energy efficient, 4-car garage, and low Orient taxes.

ORIENT, NY



2205 Grandview Drive

5 BR | 4.5 BA | \$2,650,000 | MLS# 3386853 | PHOTOS ARE DIGITAL RENDERINGS

New Construction due to be completed July 2023, soaring ceilings, chef's kitchen, heated in-ground pool, 5,000 sqft. of living space, 1.1 acres, and private beach access.



WILLIAM WALTERS, CBR

Real Estate Salesperson

c.631.553.6533

williamwalters@danielgale.com

Follow me on Instagram @northforknomad

GREENPORT OFFICE | 114 MAIN STREET, GREENPORT, NY 11944 | DANIELGALE.COM



Daniel
Gale

Sotheby's
INTERNATIONAL REALTY



"The Oakside"

Smithtown, NY. This exceptional Estate comprises four meticulously maintained buildings, including the main house, charming cottage, ranch home, 3-bay heated garage, and heated pool with cabana. This Estate has been totally renovated to the highest modern standards while still retaining its 1920s charm. Encompassing 5 acres, with over 900 feet of water frontage on the Nissequogue River.

146 + 148 Oakside Drive
6 BR | 5.5 BA | \$5,500,000
danielgale.com/listing/dgid799258



BONNIE GLENN
Associate Real Estate Broker
Gold Circle of Excellence
c.631.921.1494
bonnieglenn@danielgale.com

SMITHTOWN OFFICE | 81 ROUTE 111, SMITHTOWN, NEW YORK 11787 | DANIELGALE.COM



New! Southampton Village, South of Highway

Stylish and comfortable home with a sunny and modern vibe, this spacious 8-bedroom home is centrally located in close proximity to the village and Coopers Beach. The floor plan is elegant, happy, and perfect for entertaining a group or for intimate gatherings. There is a detached garage, a hoops court, and a 40-foot pool with a spa. A tennis court is in very close proximity within the community.

39 Adams Lane
8 BR | 8.0 BA | \$7,650,000
39AdamsLn.com



PATRICIA J PETRILLO
Associate Broker
516.356.5136
pat.petrillo@sothebysrealty.com



DAWN PETRILLO
Licensed Salesperson
631.278.9578
dawn.petrillo@sothebysrealty.com

SOTHEBY'S INTERNATIONAL REALTY - SOUTHAMPTON BROKERAGE | 50 NUGENT STREET SOUTHAMPTON, NEW YORK 11968 | SOTHEBYSREALTY.COM



First Time Offering

Created to the highest standards by renowned designer, Nancy Corzine, this exceptionally designed mansion is situated on 3.5± manicured acres in Bridgehampton. This 8,000± sq. ft. mansion offers 7 en-suite bedrooms, 8 full bathrooms, double height living room with fieldstone fireplace, oversized pool, easy re-installed tennis court and plans in place for a pool house.

5 Casey Lane, Bridgehampton NY, 11932
7 BR | 8 FULL BA, 2 HF BA | \$11,000,000
5CaseyLane.com



BEATE V. MOORE
Associate
516.527.7868
beate.moore@sothebys.realty

SOTHEBY'S INTERNATIONAL REALTY - BRIDGEHAMPTON BROKERAGE | 2446 MAIN STREET, P.O. BOX 1799 BRIDGEHAMPTON, NEW YORK 11932 | SOTHEBYSREALTY.COM

© 2023 Sotheby's International Realty. All Rights Reserved. Sotheby's International Realty® is a registered trademark and used with permission. Each Sotheby's International Realty office is independently owned and operated, except those operated by Sotheby's International Realty, Inc. The Sotheby's International Realty network fully supports the principles of the Fair Housing Act and the Equal Opportunity Act.

BETHEL, NEW YORK



51 Homestead Trail

4 BR | 3.5 BA | \$1,695,000 sothebysrealty.com/id/77KS2J

With privacy and lake access, this 4/5 Bedroom, 3.5 Bathroom, Upstate NY home is made for a weekend and summer retreat.

BETHEL, NEW YORK



367 Woodstone Trail

3 BR | 2.5 BA | \$1,350,000

sothebysrealty.com/id/TR5W3W

BETHEL, NEW YORK



26 Cove Lane

3 BR | 2.5 BA | \$950,000

sothebysrealty.com/id/P3TSZM



CHRISTINE VANDE VREDE

Associate Broker

845.283.3637

christine.vandevrede@sothebysrealty.com



EILEEN JASPER

Sales Associate

845.807.9454

eileen.jasper@sothebysrealty.com



Twin Oaks at The Chapin Estate

This custom crafted Adirondack style lodge sits on an over sized 6.45 Acre lot with 568' of lake frontage on the shores of The Toronto Reservoir in Bethel, New York. Located 90 minutes from NYC in the exclusive gated community, The Chapin Estate.

312 Chapin Trail
 7 BR | 6.5 BA | \$3,250,000
sothebysrealty.com/id/F6NCZ3

CHRISTINE VANDE VREDE
 Associate Broker
 845.283.3637
christine.vandevrede@sothebysrealty.com

EILEEN JASPER
 Sales Associate
 845.807.9454
 845.583.4900
eileen.jasper@sothebysrealty.com

CHAPIN SOTHEBY'S INTERNATIONAL REALTY | 2902 STATE ROUTE 55 WHITE LAKE, NEW YORK 12786 | SOTHEBYSREALTY.COM

ARMONK, NEW YORK



73 Whipoorwill Road

4 BR | 3.1 BA | \$1,750,000 73WhipoorwillRoad.com

Unique opportunity to own this picturesque antique colonial farmhouse on 8.8 acres in the prime Whipoorwill estate area of Armonk.

OLD GREENWICH, CONNECTICUT



10 W Crossway

5 BR | 6.0 BA | \$6,000,000

Amazing water views from the newly built 5 bedroom, 6 bath house with a large yard in the coveted Lucas Point Association which offers private beach and dock.



THE CLARONI AND PERRY TEAM

203.570.8110

cpteam@sothebysrealty.com

SOTHEBY'S INTERNATIONAL REALTY - GREENWICH BROKERAGE | ONE PICKWICK PLAZA GREENWICH, CONNECTICUT 06830 | SOTHEBYSREALTY.COM



1 Indian Chase Drive

Capturing magnificent light and striking water vistas, this resort-like aerie sits high above Indian Harbor on 292' of private water frontage with a waterside entertaining deck, boathouse and floating dock. A down to the studs gut renovation expertly showcases the original historic home while adding a contemporary aesthetic. Compound includes a pool with spa, a tennis court and a two bedroom cottage.

1 Indian Chase Drive
7 BR | 8.3 BA | \$27,950,000
1IndianChaseDr.com

LESLIE MCELWREATH
Senior Global Real Estate Advisor
917.539.3654
leslie.mcelwreath@sothebys.realty

SOTHEBY'S INTERNATIONAL REALTY - GREENWICH BROKERAGE | ONE PICKWICK PLAZA GREENWICH, CONNECTICUT 06830 | SOTHEBYSREALTY.COM

© 2023 Sotheby's International Realty. All Rights Reserved. Sotheby's International Realty® is a registered trademark and used with permission. Each Sotheby's International Realty office is independently owned and operated, except those operated by Sotheby's International Realty, Inc. The Sotheby's International Realty network fully supports the principles of the Fair Housing Act and the Equal Opportunity Act.



48 Clapboard Ridge Road

Extraordinary bespoke stone manor by eminent architect Doug VanderHorn on the site of the Vanderbilt homestead. Spectacular lakefront setting on 2.9 parklike acres in prime mid-country estate area. Currently five beautiful ensuite bedrooms with potential to expand to seven bedrooms. The house features a center hall floor plan with warm character oak floors & five masonry fireplaces.

48 Clapboard Ridge Road
5 BR | 5.3 BA | \$9,295,000
48CRR.com

LESLIE MCELWREATH
Senior Global Real Estate Advisor
917.539.3654
leslie.mcelwreath@sothebys.realty

SOTHEBY'S INTERNATIONAL REALTY - GREENWICH BROKERAGE | ONE PICKWICK PLAZA GREENWICH, CONNECTICUT 06830 | SOTHEBYSREALTY.COM

© 2023 Sotheby's International Realty. All Rights Reserved. Sotheby's International Realty® is a registered trademark and used with permission. Each Sotheby's International Realty office is independently owned and operated, except those operated by Sotheby's International Realty, Inc. The Sotheby's International Realty network fully supports the principles of the Fair Housing Act and the Equal Opportunity Act.



88 Cedar Cliff Road

Stunning and permanently protected Long Island water views set the stage for this custom French Normandy manor masterfully constructed in 2008 in the premier Indian Head Association in Riverside, Connecticut. The parklike and oversized 1.77 acre property enjoys dramatic water views, level lawn, pool, separate spa, expansive terraces, covered porches and beautiful gardens.

88 Cedar Cliff Road
6 BR | 9.0 BA | \$19,500,000
88CedarCliffRd.com

LESLIE MCELWREATH
Senior Global Real Estate Advisor
917.539.3654
leslie.mcelwreath@sothebys.realty

SOTHEBY'S INTERNATIONAL REALTY - GREENWICH BROKERAGE | ONE PICKWICK PLAZA GREENWICH, CONNECTICUT 06830 | SOTHEBYSREALTY.COM



6 Windrose Way

Stunning waterfront home in the exclusive, 24hr guard-gated Mead Point association. Designed by NYC architect Constantin Wickenburg, the 8,111 sq ft, steel frame, cedar, stone & glass home guarantees unparalleled views of the water. This breathtaking custom-built home is nestled alongside a private 5-acre park with a 160' deep-water dock, exclusively enjoyed by residents.

6 Windrose Way
6 BR | 7.5 BA | \$15,750,000
6WindroseWayCT.com

JOSEPH BARBIERI
Senior Global Real Estate Advisor
203.940.2025
joseph.barbieri@sothebys.realty

SOTHEBY'S INTERNATIONAL REALTY - GREENWICH BROKERAGE | ONE PICKWICK PLAZA GREENWICH, CONNECTICUT 06830 | SOTHEBYSREALTY.COM

© 2023 Sotheby's International Realty. All Rights Reserved. Sotheby's International Realty® is a registered trademark and used with permission. Each Sotheby's International Realty office is independently owned and operated, except those operated by Sotheby's International Realty, Inc. The Sotheby's International Realty network fully supports the principles of the Fair Housing Act and the Equal Opportunity Act.



543 Stanwich Road

Polished and sophisticated custom-built home on 4 secluded acres, appointed with exquisite finishes and luxurious detailing. Luminous marble entry bookended by dual staircases opens to living room with fireplace, sitting room with full bar and formal dining room with butler's pantry. Backyard offers 50 ft pool, hot tub and pool house with indoor/outdoor kitchenette, and full bath.

543 Stanwich Road
7 BR | 8.5 BA | \$16,995,000
543Stanwich.com

JOSEPH BARBIERI
Senior Global Real Estate Advisor
203.940.2025
joseph.barbieri@sothebys.realty

SOTHEBY'S INTERNATIONAL REALTY - GREENWICH BROKERAGE | ONE PICKWICK PLAZA GREENWICH, CONNECTICUT 06830 | SOTHEBYSREALTY.COM

© 2023 Sotheby's International Realty. All Rights Reserved. Sotheby's International Realty® is a registered trademark and used with permission. Each Sotheby's International Realty office is independently owned and operated, except those operated by Sotheby's International Realty, Inc. The Sotheby's International Realty network fully supports the principles of the Fair Housing Act and the Equal Opportunity Act.



52 Dawn Harbor Lane

Enchanting 1926 fieldstone manor with deeded water access was deftly transformed by the current owners to encompass 8,903 sq ft with 7 bedrooms and 7 baths. Approached by a gated stone courtyard flanked by flowering trees, the handsome interiors exude Old World charm. Pool house features stone fireplace, wet bar and full bath. Gym above 3-car garage.

52 Dawn Harbor Lane
7 BR | 8.0 BA | \$11,750,000
52DawnHarbor.com

JOSEPH BARBIERI
Senior Global Real Estate Advisor
203.940.2025
joseph.barbieri@sothebys.realty

SOTHEBY'S INTERNATIONAL REALTY - GREENWICH BROKERAGE | ONE PICKWICK PLAZA GREENWICH, CONNECTICUT 06830 | SOTHEBYSREALTY.COM

© 2023 Sotheby's International Realty. All Rights Reserved. Sotheby's International Realty® is a registered trademark and used with permission. Each Sotheby's International Realty office is independently owned and operated, except those operated by Sotheby's International Realty, Inc. The Sotheby's International Realty network fully supports the principles of the Fair Housing Act and the Equal Opportunity Act.



33 Byram Drive

Bonnie Breeze is a historic circa 1894 Federal Colonial Revival Cottage located in the heart of the Belle Haven Association. It is offered for the first time in 50 years. This is a unique opportunity to acquire a rarely found turn-key estate property in Belle Haven with Pool, Tennis court and western water views over Byram Harbor.

33 Byram Drive
6 BR | 6.2 BA | \$14,250,000
33ByramDrive.com

MATT BERNARD
203.273.2883
matt.bernard@sothebys.realty

SOTHEBY'S INTERNATIONAL REALTY - GREENWICH BROKERAGE | ONE PICKWICK PLAZA GREENWICH, CONNECTICUT 06830 | SOTHEBYSREALTY.COM

© 2023 Sotheby's International Realty. All Rights Reserved. Sotheby's International Realty® is a registered trademark and used with permission. Each Sotheby's International Realty office is independently owned and operated, except those operated by Sotheby's International Realty, Inc. The Sotheby's International Realty network fully supports the principles of the Fair Housing Act and the Equal Opportunity Act.



La Gentilhommiere

Inspired by Château de Givenchy-le-Noble in northern France, this unique property curated by the present owners offers a once-in-lifetime opportunity to live in an authentic French Country Manor with pool, pool house, guest house/studio, and designed landscaping. The stately limestone residence at the end of a long-gated driveway evokes the romance of the French countryside.

365 Riverbank Road
Stamford, CT
4 BR | 4.5 BA | \$7,495,000
FrenchManorCT.com

HELENE BARRE
203.550.0855
helene.barre@sothebys.realty

FRAN EHRLICH
203.249.5561
francine.ehrlich@sothebys.realty

SOTHEBY'S INTERNATIONAL REALTY - GREENWICH BROKERAGE | ONE PICKWICK PLAZA GREENWICH, CONNECTICUT 06830 | SOTHEBYSREALTY.COM

© 2023 Sotheby's International Realty. All Rights Reserved. Sotheby's International Realty® is a registered trademark and used with permission. Each Sotheby's International Realty office is independently owned and operated, except those operated by Sotheby's International Realty, Inc. The Sotheby's International Realty network fully supports the principles of the Fair Housing Act and the Equal Opportunity Act.



Ultimate Private Compound

Bucolic, twenty-five acre compound only one hour from NYC. With five acres of connecting lakes, there are six buildings with a five bedroom main house, guest cottage, carriage house, pool house, a writers cabin and barn. Walking through the towering specimen trees, lush gardens, sweeping lawns, stone walls, bridges and terraces, one is transported to a by-gone-era of natural tranquility.

1021 Rock Rimmon Road, Stamford CT
\$9,499,000
williampitt.com | MLS# 170431755



STEPHAN VON JENA
Global Real Estate Specialist
203.434.8472
svonjena@williampitt.com

WILLIAM PITT SOTHEBY'S INTERNATIONAL REALTY | 1057 POST ROAD, DARIEN CT 06820 | SOTHEBYSREALTY.COM



Historic Estate Modernized

One of the most beautifully executed renovations of an historic property in this area, the Elisha Crane house (c.1756) overlooks 6+ acres of irrigated gardens and fields with an additional five acres left in its natural state. One of Architectural Digest's top 100 designers worked for two years to restore this charming, eminently livable estate. Conveniently located two hours to NYC and Boston.

172 Roast Meat Hill Rd, Killingworth, CT
4 Bedrooms | 3.1 Baths | \$2,750,000
172roastmeathillroad.com



MARGARET MUIR
Sales Associate
203.415.9187
mmuir@williampitt.com

WILLIAM PITT SOTHEBY'S INTERNATIONAL REALTY | 696 BOSTON POST ROAD, MADISON, CT 06443 | SOTHEBYSREALTY.COM



488 West Road New Canaan, CT

Imagine driving down a private lane through stone pillars, and mahogany gates open to reveal this magnificent eight-bedroom French Normandy estate. This one-of-a-kind New Canaan home boasts gorgeous details - inside and out. Park in your own private courtyard and take in the elegance of this custom home by renowned architect and award-winning builder Dinyar Wadia.

488 West Road | New Canaan, CT
\$7,895,000
8 BR | 10.2 BA | 16,423 SF | 4.02 ACRES
sothebysrealty.com/id/VVHZV7

ROBERT BLOSIO
Sales Associate
203.249.7164
RBlosio@williampitt.com

KAREN SHEFTELL
Sales Associate
203.940.4604
KSheftell@williampitt.com

NEW CANAAN BROKERAGE | 26 CHERRY STREET, NEW CANAAN, CONNECTICUT 06840 | SOTHEBYSREALTY.COM



Let me connect you... from the Jersey Shore to across the globe.

I am currently helping clients buy and sell homes in my area at the Jersey Shore. I have referred other clients to my colleagues in other parts of New Jersey, New York, and all the way to the South of France through our broad referral networking system within Sotheby's International Realty. I look forward to assisting you

MAUREEN SKEA

Sales Associate

917.797.3078

maureenskea@wardwightsir.com

ASBURY PARK, NEW JERSEY



BELMAR, NEW JERSEY



SPRING LAKE, NEW JERSEY





Ward
Wight

Sotheby's
INTERNATIONAL REALTY



Spring Lake Oceanfront Home

This Oceanfront home sits majestically on oversized lot with unparalleled 180 views of the Atlantic Ocean. Designed with both casual and elegance in mind. A unique Luxury home in a Special town of Spring Lake.

1805 Ocean Avenue
7 BR | 10.2 BA | \$12,995,000
sothebysrealty.com/id/TME6E3



ANITA VANDENBULCKE
Broker Associate
732.245.8822
avandenbulcke@wardwightsir.cim

WARD WIGHT SOTHEBY'S INTERNATIONAL REALTY | 1117 THIRD AVENUE SPRING LAKE, NEW JERSEY 07762 | SOTHEBYSREALTY.COM

© 2023 Sotheby's International Realty. All Rights Reserved. Sotheby's International Realty® is a registered trademark and used with permission. Each Sotheby's International Realty office is independently owned and operated, except those operated by Sotheby's International Realty, Inc. The Sotheby's International Realty network fully supports the principles of the Fair Housing Act and the Equal Opportunity Act.



Ward
Wight

Sotheby's
INTERNATIONAL REALTY



Local Market Expert

Kerri is a full-time, multi-million dollar producer, well known for her professionalism and comprehensive market knowledge. Kerri brings more than 15 years of residential brokerage experience, along with an impeccable track record. Kerri works out of Ward Wight Sotheby's International Realty's Spring Lake office.

KERRI SCHANEN

Broker Associate

732.299.0270

kschanen@wardwightsir.com

SOLD IN SPRING LAKE HTS, NEW JERSEY



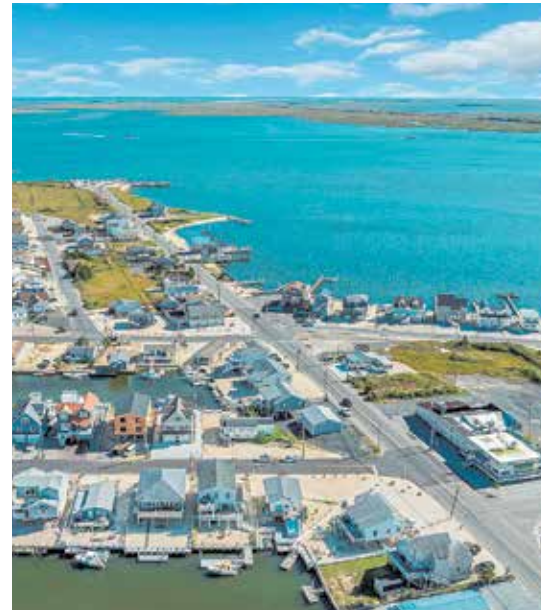
2 Oak Court

SOLD IN WALL TOWNSHIP, NEW JERSEY



1426 Winesap Drive

SOLD IN TUCKERTON, NEW JERSEY



409 Kingfisher Road



Ward
Wight

Sotheby's
INTERNATIONAL REALTY

SPRING LAKE, NEW JERSEY



65 South Boulevard

7 BR | 11.5 BA | \$8,750,000 sothebysrealty.com/id/C2R44C

SEA GIRT, NEW JERSEY



712 Morven Terrace

\$4,799,999
sothebysrealty.com/id/WMDDDJ

SEA GIRT, NEW JERSEY



209 Beacon Boulevard

50 X 150 LOT | \$2,199,000
sothebysrealty.com/id/WL6SDN



DENISE DREYER

Sales Associate
201.819.2604
ddreyer@wardwightsir.com

WARD WIGHT SOTHEBY'S INTERNATIONAL REALTY | 522 WASHINGTON BOULEVARD SEA GIRT, NEW JERSEY 08750 | SOTHEBYSREALTY.COM

© 2023 Sotheby's International Realty. All Rights Reserved. Sotheby's International Realty® is a registered trademark and used with permission. Each Sotheby's International Realty office is independently owned and operated, except those operated by Sotheby's International Realty, Inc. The Sotheby's International Realty network fully supports the principles of the Fair Housing Act and the Equal Opportunity Act.



Ward
Wight

Sotheby's
INTERNATIONAL REALTY

SPRING LAKE, NEW JERSEY



65 South Boulevard

7 BR | 11.5 BA | \$8,750,000 sothebysrealty.com/id/C2R44C

SOLD IN SEA GIRT, NEW JERSEY



320 Crescent Parkway

SOLD IN SPRING LAKE, NEW JERSEY



311 Madison Avenue



MICHAEL SKEA
Broker Associate
732.272.5898
mskea@wardwightsir.com

WARD WIGHT SOTHEBY'S INTERNATIONAL REALTY | 1117 THIRD AVENUE SPRING LAKE, NEW JERSEY 07762 | SOTHEBYSREALTY.COM

© 2023 Sotheby's International Realty. All Rights Reserved. Sotheby's International Realty® is a registered trademark and used with permission. Each Sotheby's International Realty office is independently owned and operated, except those operated by Sotheby's International Realty, Inc. The Sotheby's International Realty network fully supports the principles of the Fair Housing Act and the Equal Opportunity Act.



Ward
Wight

Sotheby's
INTERNATIONAL REALTY



Stunning Custom Spring Lake Home

Stunning, new construction and major renovations blend with the vintage charm of the original 1892 home in this rare offering, 306 Washington Avenue. Three blocks to award winning beaches and a short stroll to charming downtown, Divine Park, and the lake, this location is absolutely outstanding.

306 Washington Avenue
6 BR | 4.2 BA | \$4,395,000
sothebysrealty.com/id/T3E8XX



MICHAEL SKEA
Broker Associate
732.272.5898
mskea@wardwightsir.com

WARD WIGHT SOTHEBY'S INTERNATIONAL REALTY | 1117 THIRD AVENUE SPRING LAKE, NEW JERSEY 07762 | SOTHEBYSREALTY.COM

© 2023 Sotheby's International Realty. All Rights Reserved. Sotheby's International Realty® is a registered trademark and used with permission. Each Sotheby's International Realty office is independently owned and operated, except those operated by Sotheby's International Realty, Inc. The Sotheby's International Realty network fully supports the principles of the Fair Housing Act and the Equal Opportunity Act.



Going the Extra Mile Selling the Jersey Shore

Kerry was raised in Wyckoff, NJ & is a graduate of Villanova. After ten years living in NYC, Kerry relocated to the Jersey Shore. Her success is complimented by her sales experience & the ability to finalize both straightforward & complex deals. She offers her clients loyalty & excellent communication skills to help them achieve their real estate goals.

KERRY PATTERSON

Sales Associate

917.576.2191

kpatterson@wardwightsir.com

SOLD IN SPRING LAKE, NEW JERSEY



215 Ludlow Avenue

SOLD IN SPRING LAKE, NEW JERSEY



405 Essex Avenue

SOLD IN SPRING LAKE, NEW JERSEY



418 Worthington Avenue



Ward
Wight

Sotheby's
INTERNATIONAL REALTY



New Construction Spring Lake Hts

NEW CONSTRUCTION TO BE BUILT....in Spring Lake Heights....ideally located within close proximity to everything the Jersey Shore has to offer. This custom built home features 5 bedrooms, 4.5 baths, full basement, open floor plan overlooking "park-like" backyard....estimated completion late Fall 2023.

554 A Church Street
5 BR | 4.5 BA | \$1,999,500
sothebysrealty.com/id/4ZR73Y



WALTER KIMM
Sales Associate
732.614.0306
wkimm@wardwightsir.com

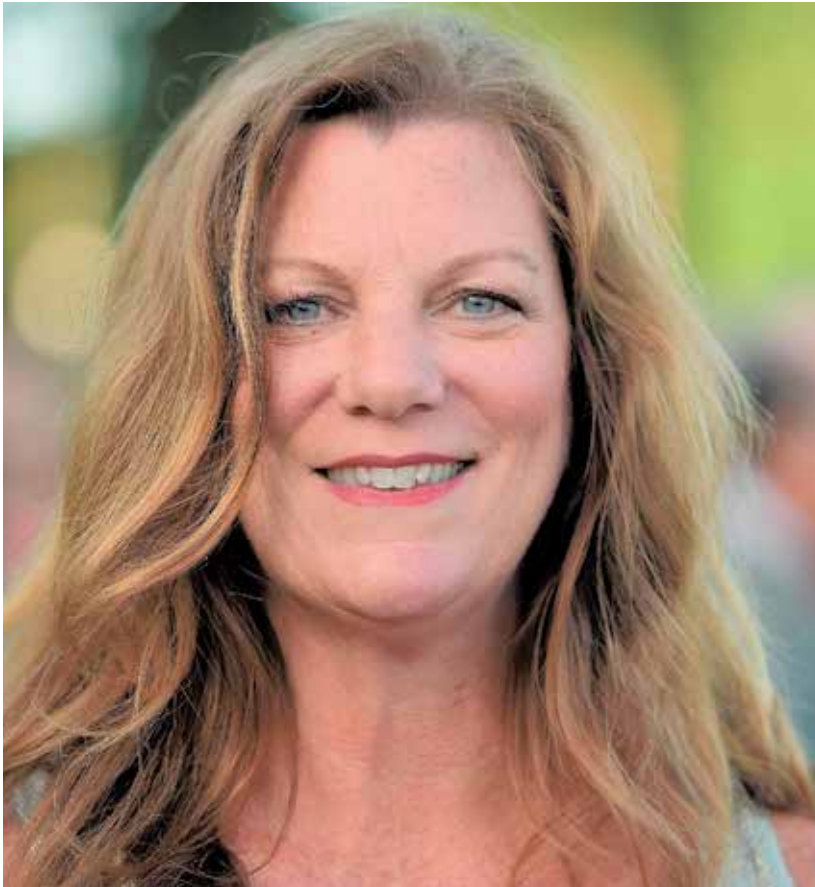
WARD WIGHT SOTHEBY'S INTERNATIONAL REALTY | 1117 THIRD AVENUE SPRING LAKE, NEW JERSEY 07762 | SOTHEBYSREALTY.COM

© 2023 Sotheby's International Realty. All Rights Reserved. Sotheby's International Realty® is a registered trademark and used with permission. Each Sotheby's International Realty office is independently owned and operated, except those operated by Sotheby's International Realty, Inc. The Sotheby's International Realty network fully supports the principles of the Fair Housing Act and the Equal Opportunity Act.



Ward
Wight

Sotheby's
INTERNATIONAL REALTY



Well-connected at the Jersey Shore

Meghan Frost is consistently a top producing agent at Ward Wight Sotheby's International Realty. As a full-time realtor with a vast knowledge of the area, Meghan loves to share the Jersey Shore lifestyle with her clients. Call her today and let her share her lifestyle with you.

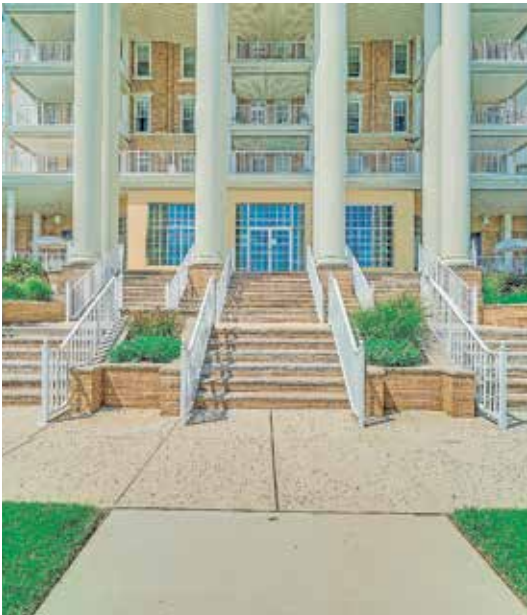
MEGHAN FROST

Sales Associate

732.236.2806

mfrost@wardwightsir.com

SOLD IN SPRING LAKE, NEW JERSEY



700 Ocean Avenue 332

SOLD IN SPRING LAKE, NEW JERSEY



201 2nd Avenue

SOLD IN SPRING LAKE HTS, NEW JERSEY



9 Apple Drive



Ward
Wight

Sotheby's
INTERNATIONAL REALTY

ASBURY PARK, NEW JERSEY



508 Cookman Avenue 3C

2 BR | 2.5 BA | \$14,000 PER MONTH

sothebysrealty.com/id/QSKD6S

DENISE ADDONISIO Sales Associate
732.337.5303 daddonisio@wardwightsir.com

AVON-BY-THE-SEA, NEW JERSEY



801 Ocean Avenue

\$4,900,000

sothebysrealty.com/id/7J7X22

KRISTINE LINDUNG Sales Associate
732.259.7887 klindung@wardwightsir.com

BRICK, NEW JERSEY



242 Curtis Point Drive

5 BR | 2.5 BA | \$11,000 PER WEEK

sothebysrealty.com/id/VE3GT4

ILZE HENRY Sales Associate
917.859.4157 ihenry@wardwightsir.com

ISLAND HEIGHTS, NEW JERSEY



117 Simpson Avenue

6 BR | 3 BA | \$899,900

sothebysrealty.com/id/WLMK77

TINA CAVAZZONI Broker Associate
908.814.2582 tcavazzoni@wardwightsir.com

SEA GIRT, NEW JERSEY



89 Mclean Avenue

6 BR | 4 BA | \$12,000 PER WEEK

sothebysrealty.com/id/54PJLG

ANGELA PFISTERER Sales Associate
732.600.0613 apfisterer@wardwightsir.com

MANASQUAN, NEW JERSEY



101 1st Avenue 101.5 1st Ave

2 BR | 2.1 BA | \$1,900,000

sothebysrealty.com/id/JF78Q2

MARY JANE PIERCE & PAULINE EVANS
732.492.2974 mjpierce@wardwightsir.com
917.648.1820 pevans@wardwightsir.com

OCEAN GROVE, NEW JERSEY



35 Pilgrim Pathway

MIXED-USE BUILDING | \$1,250,000

sothebysrealty.com/id/MDNFDT

JACOB L. SMITH Sales Associate
732.567.0162 jsmith@wardwightsir.com

SEA GIRT, NEW JERSEY



708 Morven Terrace

5 BR | 5.2 BA | \$25,000 SUMMER RENTAL

sothebysrealty.com/id/SM63M2

ERIN KAVANAUGH Sales Associate
732.859.8366 ekmg@wardwightsir.com

SPRING LAKE, NEW JERSEY



2110 Edgewood Place

4 BR | 3.5 BA | \$33,000 BIWEEKLY

sothebysrealty.com/id/HZ25RB

ERIN KAVANAUGH Sales Associate
732.859.8366 ekmg@wardwightsir.com

WARD WIGHT SOTHEBY'S INTERNATIONAL REALTY | 522 WASHINGTON BOULEVARD SEA GIRT, NEW JERSEY 08750 | SOTHEBYSREALTY.COM

SOLD IN LONG BRANCH, NEW JERSEY



23 Grant Street

SOLD IN MANASQUAN, NEW JERSEY



380 Euclid Avenue

SOLD IN RUMSON, NEW JERSEY



7 S Rohallion Drive

SOLD IN WALL, NEW JERSEY



1411 Courtland Drive



BARBARA SCAFFIDI
Broker Associate
732.233.8248
bscaffidi@wardwightsir.com



Experience the Lifestyle at the Jersey Shore

Michael Mulroy and Christine Woodrow have over 20 years of combined experience in the luxury home market. As long time residents they are intimately aware of what the Jersey Shore has to offer; from its pristine beaches and glorious sunsets to the charming downtown areas. Let the Mike and Christy Sell team assist you in navigating this market.

MICHAEL MULROY & CHRISTINE WOODROW

Broker Associates

888.622.3550

mikeandchristysell@wardwightsir.com

BRIELLE, NEW JERSEY



Great Boating

SEA GIRT, NEW JERSEY



Amazing Beaches

SPRING LAKE, NEW JERSEY



Beautiful Boardwalk

DELAWARE TOWNSHIP, NJ



198 Locktown Flemington Road

3 BR | 3 BA | 1.1 AC | \$850,000 callawayhenderson.com/NJHT2001836

Beautifully masterminded by a local architect, this is a unique opportunity to own and live in a newly converted church that dates to the 19th century.

KEVIN SHAWN MCPHEETERS Broker Associate
215.740.8331 | kmcpheters@callawayhenderson.com

FRENCHTOWN BOROUGH, NJ



53 Kingwood Avenue

6 BR | 7/1 BA | 0.27 AC | \$720,000

callawayhenderson.com/NJHT2001384

CYNTHIA SHOEMAKER-ZERRER Sales Associate
609.915.8399 | cshoemakerzerrer@callawayhenderson.com

EAST AMWELL TOWNSHIP, NJ



258-260 Wertsville Road

3 BR | 3/1 BA | 10.49 AC | \$1,350,000

callawayhenderson.com/NJHT2001848

BETH M. STEFFANELLI Broker Associate
609.915.2360 | bsteffanelli@callawayhenderson.com

CALLAWAY HENDERSON SOTHEBY'S INTERNATIONAL REALTY | 49 BRIDGE STREET, LAMBERTVILLE, NJ 08530 | 609.397.1974 | CALLAWAYHENDERSON.COM



HOPEWELL TOWNSHIP, NJ



82 Aunt Molly Road

6 BR | 8/4 BA | 25.94 AC | \$7,750,000

callawayhenderson.com/NJME2012886

JUDSON HENDERSON Broker of Record

609.921.1050 | jhenderson@callawayhenderson.com

MONTGOMERY TOWNSHIP, NJ



1459 Great Road

7 BR | 7/2 BA | 60 AC | \$5,650,000

callawayhenderson.com/NJSO2002180

JANET STEFANDL Broker Associate

201.805.7402 | jstefandl@callawayhenderson.com

LAWRENCE TOWNSHIP, NJ



274 Carter Road

6 BR | 7/2 BA | 8.34 AC | \$5,499,000

callawayhenderson.com/NJME2010956

SUSAN A. COOK Sales Associate

609.577.9959 | scook@callawayhenderson.com

PRINCETON, NJ



155 Drakes Corner Road

6 BR | 7/2 BA | 19.79 AC | \$5,000,000

callawayhenderson.com/NJME2028238

JUDSON HENDERSON Broker of Record

609.921.1050 | jhenderson@callawayhenderson.com

LAWRENCE TOWNSHIP, NJ



272 Carter Road

5 BR | 6/2 BA | 4.76 AC | \$4,850,000

callawayhenderson.com/NJME2028508

SUSAN A. COOK Sales Associate

609.577.9959 | scook@callawayhenderson.com

PRINCETON, NJ



91-93 Edgerstoune Road

7 BR | 6/1 BA | 3.38 AC | \$4,250,000

callawayhenderson.com/NJME2028472

MAURA MILLS Sales Associate

609.947.5757 | mmills@callawayhenderson.com

WEST WINDSOR TOWNSHIP, NJ



1 Dey Farm Road

5 BR | 7/3 BA | 7.28 AC | \$4,400,000

callawayhenderson.com/NJME2026622

KATHRYN BAXTER Sales Associate

516.521.7771 | kbaxter@callawayhenderson.com

LAWRENCE TOWNSHIP, NJ



4525 Province Line Road

6 BR | 6/2 BA | 10.6 AC | \$3,750,000

callawayhenderson.com/NJME2026858

JANE HENDERSON KENYON Broker Associate

609.828.1450 | jkenyon@callawayhenderson.com

PRINCETON, NJ



16 Paul Robeson Place

4 BR | 4/1 BA | \$3,099,000

callawayhenderson.com/NJME2020834

MICHAEL MONARCA Sales Associate

917.225.0831 | mmonarca@callawayhenderson.com

PRINCETON, NJ



2 Oakridge Court

6 BR | 5/1 BA | 2.28 AC | \$2,975,000

callawayhenderson.com/NJME2028720

JUDSON HENDERSON Broker of Record

609.921.1050 | jhenderson@callawayhenderson.com

PRINCETON, NJ



25 Oakridge Court

5 BR | 4/1 BA | 1.35 AC | \$2,975,000

callawayhenderson.com/NJME2027136

MAURA MILLS Sales Associate

609.947.5757 | mmills@callawayhenderson.com

PRINCETON, NJ



10 Prentice Lane

5 BR | 6/2 BA | 1.5 AC | \$2,950,000

callawayhenderson.com/NJME2026608

SUSAN L. DIMEGLIO Sales Associate

609.915.5645 | sdimeglio@callawayhenderson.com

PRINCETON, NJ



12 Battle Road

8 BR | 6/1 BA | 1 AC | \$2,850,000

callawayhenderson.com/NJME2026020

BARBARA BLACKWELL Broker Associate

609.915.5000 | bblackwell@callawayhenderson.com

PRINCETON, NJ



15 Stony Brook Lane

5 BR | 3/1 BA | 3.63 AC | \$2,850,000

callawayhenderson.com/NJME2027984

KIMBERLY A. RIZK Sales Associate

609.203.4807 | krizk@callawayhenderson.com

PRINCETON, NJ



27 Westcott Road

5 BR | 4/2 BA | 0.34 AC | \$2,750,000

callawayhenderson.com/NJME2028394

SYLMARIE TROWBRIDGE Sales Associate

917.386.5880 | syltrowbridge@ch-sir.com

HOPEWELL TOWNSHIP, NJ



179 Stony Brook Road

6 BR | 5/1 BA | 31.36 AC | \$2,250,000

callawayhenderson.com/NJME2027646

JANE HENDERSON KENYON Broker Associate

609.828.1450 | jkenyon@callawayhenderson.com

PRINCETON, NJ



68 Fitch Way

5 BR | 4/1 BA | 1 AC | \$1,785,000

callawayhenderson.com/NJME2028742

JUDSON HENDERSON Broker of Record

609.921.1050 | jhenderson@callawayhenderson.com

PRINCETON, NJ



72 Arretton Road

4 BR | 4/1 BA | 1.62 AC | \$1,795,000

callawayhenderson.com/NJME2027796

JUDSON HENDERSON Broker of Record

609.921.1050 | jhenderson@callawayhenderson.com

CALLAWAY HENDERSON SOTHEBY'S INTERNATIONAL REALTY | 4 NASSAU STREET, PRINCETON, NJ 08542 | 609.921.1050 | CALLAWAYHENDERSON.COM



Callaway
Henderson

Sotheby's
INTERNATIONAL REALTY

PRINCETON, NJ



108 Rosedale Lane

5 BR | 4/1 BA | 3.2 AC | \$1,725,000

callawayhenderson.com/NJME2027752

SYLMARIE TROWBRIDGE Sales Associate
917.386.5880 | syltrowbridge@ch-sir.com

PRINCETON, NJ



145 Ewing Street, Unit B

5 BR | 5 BA | 0.25 AC | \$1,599,000

callawayhenderson.com/NJME2027604

SUSAN L. DIMEGLIO Sales Associate
609.915.5645 | sdimeglio@callawayhenderson.com

HILLSBOROUGH TOWNSHIP, NJ



1708-1728 Millstone River Road

5 BR | 3 BA | 11.38 AC | \$1,395,000

callawayhenderson.com/NJSO2001634

GRANT WAGNER Sales Associate
609.331.0573 | gwagner@callawayhenderson.com

PRINCETON, NJ



11 Prentice Lane

1.5 AC | Secluded Enclave | \$1,350,000

callawayhenderson.com/NJME2028248

SUSAN L. DIMEGLIO Sales Associate
609.915.5645 | sdimeglio@callawayhenderson.com

PRINCETON, NJ



145 Ewing Street, Unit A

4 BR | 3/1 BA | 0.25 AC | \$1,299,000

callawayhenderson.com/NJME2027596

SUSAN L. DIMEGLIO Sales Associate
609.915.5645 | sdimeglio@callawayhenderson.com

MONTGOMERY TOWNSHIP, NJ



14 Innisbrook Road

3 BR | 2/1 BA | 0.5 AC | \$950,000

callawayhenderson.com/NJSO2002164

MADOLYN GREVE Broker Associate
609.462.2505 | mgreve@callawayhenderson.com

EAST AMWELL TOWNSHIP, NJ



84 Stony Brook Road

4 BR | 3 BA | 11.8 AC | \$925,000

callawayhenderson.com/NJHT2001796

LINDA TWINING Sales Associate
609.439.2282 | ltwining@callawayhenderson.com

PRINCETON, NJ



17 Red Hill Road

3 BR | 2/1 BA | 0.31 AC | \$825,000

callawayhenderson.com/NJME2028672

JANE HENDERSON KENYON Broker Associate
609.828.1450 | jkenyon@callawayhenderson.com

PENNINGTON BOROUGH, NJ



320 Sked Street

4 BR | 2 BA | 0.37 AC | \$649,000

callawayhenderson.com/NJME2027320

JANE HENDERSON KENYON Broker Associate
609.828.1450 | jkenyon@callawayhenderson.com

CALLAWAY HENDERSON SOTHEBY'S INTERNATIONAL REALTY | 4 NASSAU STREET, PRINCETON, NJ 08542 | 609.921.1050 | CALLAWAYHENDERSON.COM

© 2023 Sotheby's International Realty. All Rights Reserved. Sotheby's International Realty® is a registered trademark and used with permission. Each Sotheby's International Realty office is independently owned and operated, except those operated by Sotheby's International Realty, Inc. The Sotheby's International Realty network fully supports the principles of the Fair Housing Act and the Equal Opportunity Act.



Heritage House

Sotheby's
INTERNATIONAL REALTY

COLTS NECK, NEW JERSEY



6 Orchard Lane

5 BR | 5.5 BA | \$2,495,000 sothebysrealty.com/id/FVM2D8

With stunning water views and Gunite heated pool, this 5-bedroom, 5.5-bathroom, Colts Neck home is made for luxury living.

COLTS NECK, NEW JERSEY



37 Dana Lane

4 BR | 3.5 BA | \$1,085,000 sothebysrealty.com/id/5KGBT7

With its bluestone patio and resort-like backyard, this 4-bedroom, 3.5-bathroom, Colts Neck home is made for entertaining.



PASCALE COPPOLA

Sales Associate

908.902.0404

pascale.coppola@sothebysrealty.com

HERITAGE HOUSE SOTHEBY'S INTERNATIONAL REALTY | 38 MAIN STREET HOLMDEL, NEW JERSEY 07733 | [SOTHEBYSREALTY.COM](https://sothebysrealty.com)

© 2023 Sotheby's International Realty. All Rights Reserved. Sotheby's International Realty® is a registered trademark and used with permission. Each Sotheby's International Realty office is independently owned and operated, except those operated by Sotheby's International Realty, Inc. The Sotheby's International Realty network fully supports the principles of the Fair Housing Act and the Equal Opportunity Act.

LONG BRANCH, NEW JERSEY



350 Ocean Ave #606

3 BR | 3.5 BA | \$4,995,000

sothebysrealty.com/id/9XJZ6R



DEBORAH JAMES

Sales Associate

908-902-0404

deborah.james@sothebysrealty.com



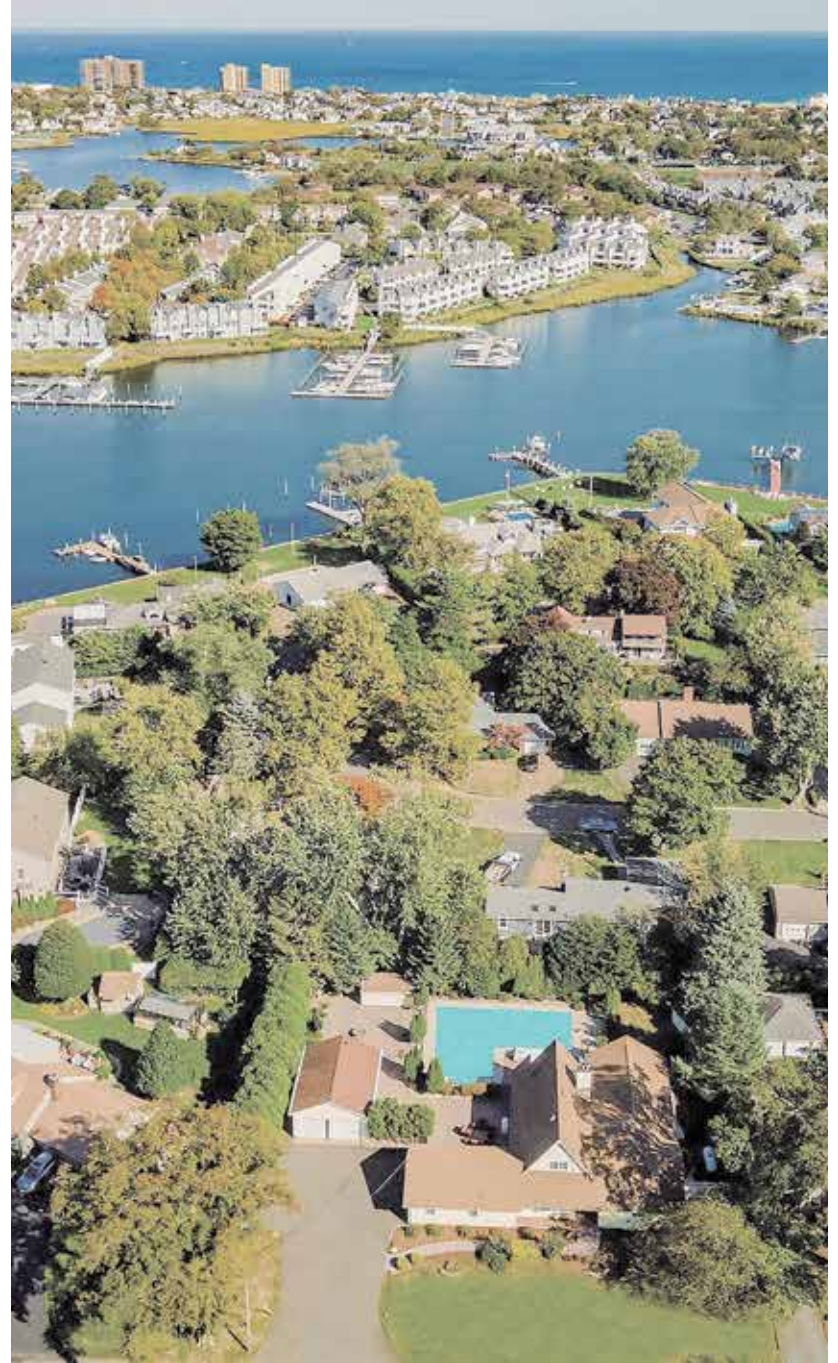
LORI SAYBOLT

Sales Associate

732-859-9010

lori.saybolt

OCEANPORT, NEW JERSEY



133 Comanche Dr

4 BR | 4.5 BA | \$1,574,900

sothebysrealty.com/id/XC8P7G

BEDMINSTER, NEW JERSEY



Mill House Compound

7 BR | 6.1 BA | 155 AC | \$10,500,000

MillHouseCompound.com

BEDMINSTER, NEW JERSEY



McMurtry Farm

6 BR | 7.2 BA | 217 AC | \$10,500,000

McMurtryFarm.com

BERNARDSVILLE, NEW JERSEY



Extraordinary Bernardsville Custom Estate

8 BR | 11.3 BA | 10 AC | \$5,250,000

BernardsvilleEstate.com

FAR HILLS, NEW JERSEY



Stunning New Construction

5 BR | 5.1 BA | 3.03 AC | \$2,995,000

18Sunnybranch.com



DEBRA ROSS
Sales Associate
908.285.0666
debra.ross@sothebysrealty.com



Modern luxury meets exquisite design

Welcome to your private oasis in Franklin Lakes, New Jersey. Set on more than 3 acres and offering unmatched privacy and serenity, this property backs up to a tranquil nature preserve on one side, with panoramic views on the other. Located approximately 30 minutes from Manhattan, this custom-designed modern architectural masterpiece offers 5 en-suite bedrooms and 7 bathrooms.

4 Penobscott Place
5 BR | 7 BA | \$6,750,000
Office Exclusive



JOLIE SCHOFFELEN
Sales Associate
c. 201.657.5847
jolie.schoffelen@sothebysrealty.com



TYLER SCHOFFELEN
Sales Associate
c. 201.916.6675
tyler.schoffelen@sothebysrealty.com

PROMINENT PROPERTIES SOTHEBY'S INTERNATIONAL REALTY | 834 FRANKLIN LAKE ROAD, FRANKLIN LAKES, NJ 07042 | O. 201.848.4002 | SOTHEBYSREALTY.COM

© 2023 Sotheby's International Realty. All Rights Reserved. Sotheby's International Realty® is a registered trademark and used with permission. Each Sotheby's International Realty office is independently owned and operated, except those operated by Sotheby's International Realty, Inc. The Sotheby's International Realty network fully supports the principles of the Fair Housing Act and the Equal Opportunity Act.

CENTER CITY PHILADELPHIA, PENNSYLVANIA

New Luxury Condominium Residences in the Arts District

2 BR/2.5 BA STARTING AT \$1,695,000 | 3 BR/3.5 BA STARTING AT \$2,985,000 sothebysrealty.com/id/B2RQXC

Views, gorgeous finishes, terraces and the largest array (36,000SF!) of amenities in the city are just steps from theaters & restaurants. Includes parking. Property tax abatement.

CENTER CITY PHILADELPHIA, PENNSYLVANIA

Symphony House Penthouse

3 BR | 4.1 BA | 4,663 SF | HUGE PRIVATE TERRACE \$5,495,000

sothebysrealty.com/id/NF5GXZ

BUCKS COUNTY, PENNSYLVANIA

Spring Meadow Farm on 18 Acres

5 BR | 3.3 BA | GUEST HOUSE | BARN | POOL \$5,700,000

sothebysrealty.com/id/CN58TH

DOUGLAS PEARSON

Sales Associate

267.907.2590

douglas.pearson@sothebysrealty.com

KURFISS SOTHEBY'S INTERNATIONAL REALTY | 1631 LOCUST STREET 3RD FLOOR PHILADELPHIA, PENNSYLVANIA 19103 | SOTHEBYSREALTY.COM



Kurfiss

Sotheby's
INTERNATIONAL REALTY

ART MUSEUM AREA, PHILADELPHIA, PENNSYLVANIA



The Penthouse at 2100 Hamilton

3 BR | 3.5 BA | 5,256 SF + 3,700 SF OF PRIVATE OUTDOOR SPACE | \$16,000,000 sothebysrealty.com/id/W6YVXJ

Enjoy 280-degree skyline, museum & park views in this new full-floor penthouse offering a high level of privacy. Property tax abatement, on-site garage parking.

DOUGLAS PEARSON Sales Associate

267.907.2590 douglas.pearson@sothebysrealty.com

ART MUSEUM AREA, PHILADELPHIA, PENNSYLVANIA



2100 Hamilton | New Residences

2 BR/2.5 BA STARTING AT \$2,225,000 | 3 BR/3.5 BA STARTING AT \$3,800,000 sothebysrealty.com/id/883C69

Offering spectacular city views, heated terraces, privacy & exceptional amenities, this is the crown jewel of the Museum Area. On-site garage parking. Property tax abatement.

DOUGLAS PEARSON Sales Associate

267.907.2590 douglas.pearson@sothebysrealty.com

KURFISS SOTHEBY'S INTERNATIONAL REALTY | 1631 LOCUST STREET 3RD FLOOR PHILADELPHIA, PENNSYLVANIA 19103 | SOTHEBYSREALTY.COM



Kurfiss

Sotheby's
INTERNATIONAL REALTY

RITTENHOUSE SQUARE, PHILADELPHIA, PENNSYLVANIA



2110 Walnut | 3 New Condominiums Steps From the Square

3 BR | 3.5 BA | 3,200+/- SF | ON-SITE GARAGE PARKING | \$3,250,000 TO \$3,500,000 sothebysrealty.com/id/3CZN6T

These architect-designed residences feature private outdoor spaces, Scavolini gourmet kitchens and a wealth of best-in-class amenities. Garage. Property tax abatement.

DOUGLAS PEARSON Sales Associate

267.907.2590 douglas.pearson@sothebysrealty.com

OLD CITY, PHILADELPHIA, PENNSYLVANIA



124 N. 2nd Street | 2 New Condominiums + Bi-Level Penthouse

3 BR/3.5 BA/2,745 SF \$1,800,000 | 4 BR/4.5 BA/2,805 SF \$1,950,000 | 4 BR/5.5 BA/4,786 SF PENTHOUSE \$4,400,000 sothebysrealty.com/id/3F96VB

This completely renovated, boutique-scale building provides privacy and top-grade finishes. Penthouse with private outdoor space. Property tax abatement. Parking included.

DOUGLAS PEARSON Sales Associate

267.907.2590 douglas.pearson@sothebysrealty.com

KURFISS SOTHEBY'S INTERNATIONAL REALTY | 1631 LOCUST STREET 3RD FLOOR PHILADELPHIA, PENNSYLVANIA 19103 | SOTHEBYSREALTY.COM



Kurfiss

Sotheby's
INTERNATIONAL REALTY



Four Chimneys

Located on one of the most coveted roads in Bucks County, this extraordinary estate is tucked away in a magnificent 44-acre setting with breathtaking views and privacy. Designed by renowned architect, Allan Greenberg, featured on Architectural Digest's AD 100 list, the bespoke residence exhibits classical elements, incredible artistic integrity and the highest level of craftsmanship.

Solebury, PA
7 BR | 9.2 BA | 44.7 AC | \$14,500,000
FourChimneysPA.com



CARY SIMONS
Kurfiss Sotheby's International Realty
Global Real Estate Advisor
484.431.9019
Cary@Kurfiss.com



STAN PONTE NYC REFERRAL AGENT
Sotheby's International Realty Inc.
Associate Real Estate Broker
646.489.3066
Stan.Ponte@Sothebys.Realty

KURFISS SOTHEBY'S INTERNATIONAL REALTY | 6038 LOWER YORK ROAD NEW HOPE, PENNSYLVANIA 18938 | SOTHEBYSREALTY.COM

© 2023 Sotheby's International Realty. All Rights Reserved. Sotheby's International Realty® is a registered trademark and used with permission. Each Sotheby's International Realty office is independently owned and operated, except those operated by Sotheby's International Realty, Inc. The Sotheby's International Realty network fully supports the principles of the Fair Housing Act and the Equal Opportunity Act. Exclusively marketed in New York by Referring Agent: Stan Ponte of Sotheby's International Realty – East Side Manhattan Brokerage



Buckshire

Solebury Twp/Lumberville, PA - An estate, known for its elegance, refuge, & historical significance, is now available. Acquired in 1932, New Hope artist, Charles Child. Mr. Child's twin brother, Paul Child, was married to the world renown writer & French chef, Julia Child. Julia & Paul had their wedding reception on this estate in 1946. The home maintains the integrity of Julia's design of the kitchen.

6681 Greenhill Road
 6 BR | 4.5 BA | \$3,200,000
sothebysrealty.com/id/BZMQE9



HELLEN CANNON
 Sales Associate
 215.779.6151
hellen@kurfiss.com



MICHAEL RICHARDSON
 Sales Associate
 609.647.4523
richardson@kurfiss.com

KURFISS SOTHEBY'S INTERNATIONAL REALTY | 6038 LOWER YORK ROAD NEW HOPE, PENNSYLVANIA 18938 | SOTHEBYSREALTY.COM

© 2023 Sotheby's International Realty. All Rights Reserved. Sotheby's International Realty® is a registered trademark and used with permission. Each Sotheby's International Realty office is independently owned and operated, except those operated by Sotheby's International Realty, Inc. The Sotheby's International Realty network fully supports the principles of the Fair Housing Act and the Equal Opportunity Act.



Kurfiss

Sotheby's
INTERNATIONAL REALTY



Pownall House

At the end of a long country lane on 59 glorious acres is "One of Bucks County's most meticulously preserved & restored stone houses." Superb Craftsmanship, authenticity & 21st century amenities can be enjoyed in this country estate. Balance & symmetry are seen in stunning stonework, beaded siding, wood shake & metal seam roofs, brick chimneys & period doors, lighting fixtures & hardware.

2707 River Road
5 BR | 4.5 BA | \$5,600,000
sothebysrealty.com/id/YTPH4C



BETH DANESE
Sales Associate
215.208.6549
beth@kurfiss.com



DANIEL LEUZZI
Sales Associate
215.680.2910
dan@kurfiss.com

KURFISS SOTHEBY'S INTERNATIONAL REALTY | 6038 LOWER YORK ROAD NEW HOPE, PENNSYLVANIA 18938 | SOTHEBYSREALTY.COM

© 2023 Sotheby's International Realty. All Rights Reserved. Sotheby's International Realty® is a registered trademark and used with permission. Each Sotheby's International Realty office is independently owned and operated, except those operated by Sotheby's International Realty, Inc. The Sotheby's International Realty network fully supports the principles of the Fair Housing Act and the Equal Opportunity Act.



Four Seasons

Sotheby's INTERNATIONAL REALTY

LONG LAKE, NEW YORK



470 Langley Park Way

MLS# 178405 | \$6,495,000

11 Beds | 4 Baths | 12,650 Square Feet

DAN COLLINS | C: 518.222.4511

dan.collins@fourseasonssir.com

WILMINGTON, VERMONT



442 Whites Road

MLS# 4901528 | \$2,997,000

4 Beds | 4 Baths | 4,000 Square Feet

BETSY WADSWORTH | C: 802.579.8689

betsy.wadsworth@fourseasonssir.com

KERHONKSON, NEW YORK



97 Krum Road

MLS# 20221884 | \$2,200,000

3 Beds | 3 Baths | 3,698 Square Feet

SHERRET CHASE | O: 845.380.2831

sherret.chase@fourseasonssir.com

QUECHEE, VERMONT



2346 Quechee Main Street

MLS# 4947989 | \$1,950,000

3 Beds | 4 Baths | 3,827 Square Feet

ERIC JOHNSTON | C: 802.779.1903

eric.johnston@fourseasonssir.com

SHOKAN, NEW YORK



200 Dancing Rock Road

MLS# 20221909 | \$1,500,000

2 Beds | 4 Baths | 4 Acres

SHERRET CHASE | O: 845.380.2831

sherret.chase@fourseasonssir.com

POMFRET, VERMONT



49 VT RT 12

MLS# 4922563 | \$895,000

Two bedroom house and studio plus a farm store.

ERIC JOHNSTON | C: 802.779.1903

eric.johnston@fourseasonssir.com

HANOVER, NEW HAMPSHIRE



62 Stevens Road

MLS# 4905411 | \$895,000

16.6 Acres

ERIC JOHNSTON | C: 802.779.1903

eric.johnston@fourseasonssir.com

LEBANON, NEW HAMPSHIRE



82 Sunset Rock Road

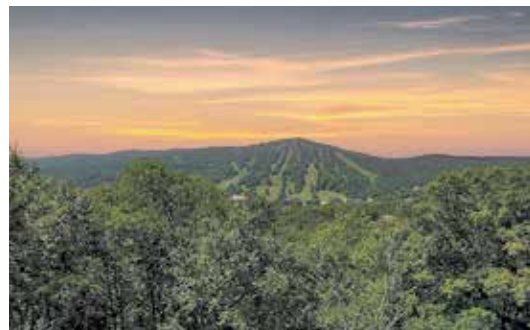
MLS# 4934517 | \$875,000

3 Beds | 3 Baths | 16.25 Acres

ERIC JOHNSTON | C: 802.779.1903

eric.johnston@fourseasonssir.com

DOVER, VERMONT



0 Blue Brook Road

MLS# 4923452 | \$849,000

62+ Acres

BETSY WADSWORTH | C: 802.579.8689

betsy.wadsworth@fourseasonssir.com

FOUR SEASONS SOTHEBY'S INTERNATIONAL REALTY | FOURSEASONSSIR.COM | 23 OFFICES THROUGHOUT VERMONT, NEW HAMPSHIRE & NEW YORK

© 2023 Sotheby's International Realty. All Rights Reserved. Sotheby's International Realty® is a registered trademark and used with permission. Each Sotheby's International Realty office is independently owned and operated, except those operated by Sotheby's International Realty, Inc. The Sotheby's International Realty network fully supports the principles of the Fair Housing Act and the Equal Opportunity Act.

BACK BAY, BOSTON, MASSACHUSETTS



260-262 Commonwealth Avenue, Unit PH

4 BR | 4F 2H BA | \$19,995,000

sothebysrealty.com/id/PRDPBW

BETH DICKERSON

617.510.8565 beth.dickerson@gibsonsir.com

BACK BAY, BOSTON, MASSACHUSETTS



Four Seasons at 1 Dalton Street, Unit 5502

3 BR | 3F 1H BA | \$18,900,000

sothebysrealty.com/id/SYQSWW

MICHAEL L. CARUCCI

617.901.7600 michael.carucci@gibsonsir.com

COHASSET, MASSACHUSETTS



"The Oaks" 49 Margin Street

10 BR | 7F 4H BA | \$18,000,000

sothebysrealty.com/id/7E46YF

CHRIS ROY

781.801.4215 chris.roy@gibsonsir.com

WESTON, MASSACHUSETTS



83 Brown Street

6 BR | 6F 1H BA | \$4,398,000

sothebysrealty.com/id/8XEHQN

THE LARA & CHELSEA COLLABORATIVE

617.686.4110 tlcc@gibsonsir.com

BELMONT, MASSACHUSETTS



89 Fletcher Road

6 BR | 6F 1H BA | \$3,695,000

sothebysrealty.com/id/CE5JRX

CAROLYN BOYLE

617.962.7514 carolyn.boyle@gibsonsir.com

BROOKLINE, MASSACHUSETTS



90 Ivy Street

6 BR | 4F BA | \$3,500,000

sothebysrealty.com/id/4TT3KD

GEORGE BALLANTYNE

617.899.7045 george.ballantyne@gibsonsir.com

ORLEANS, MASSACHUSETTS



264 Tonset Road

5 BR | 5F 2H BA | \$3,295,000

sothebysrealty.com/id/5VZD6J

LUXRECAPECOD

508.237.2671 brian.pothier@gibsonsir.com

GLOUCESTER, MASSACHUSETTS



9 Boulder Avenue, Unit 1

3 BR | 3F 1H BA | \$3,250,000

sothebysrealty.com/id/LSXH4P

MCDERMOTT GROUP

978.852.1655 susan.mcdermott@gibsonsir.com

NORWELL, MASSACHUSETTS



59 Winter Street

5 BR | 7F 3H BA | \$2,995,000

sothebysrealty.com/id/M5J233

ASHLEY BRENNAN

781.844.5302 ashley.brennan@gibsonsir.com

EAST SIDE OF PROVIDENCE, RHODE ISLAND



110 Congdon Street

3 BR | 4.1 BA | \$3,125,000

sothebysrealty.com/id/JS64GF

THE MACKINNEY GOLD GROUP Sales Associates
917.257.4302 mackinneygoldgroup@mottandchace.com

BARRINGTON, RHODE ISLAND



139 Nayatt Road

5 BR | 4.3 BA | \$2,725,000

sothebysrealty.com/id/5V95JG

CAROLYN COLEMAN Sales Associate
401.529.3763 carolyn.coleman@mottandchace.com

CHARLESTOWN, RHODE ISLAND



34 Sea View Drive

4 BR | 4.1 BA | \$1,495,000

sothebysrealty.com/id/2BDLRZ

STEPHEN MURPHY Sales Associate
917.841.9389 stephen.murphy@mottandchace.com

NARRAGANSETT, RHODE ISLAND



242 Sand Hill Cove Road

4 BR | 2.1 BA | \$3,899,000

sothebysrealty.com/id/Q24F34

KAREN FOLLETT | Sales Associate
401.742.5998 karen.follett@mottandchace.com

MOTT & CHACE SOTHEBY'S INTERNATIONAL REALTY | WATERPLACE, 100 EXCHANGE STREET, PROVIDENCE, RHODE ISLAND 02903 | SOTHEBYSREALTY.COM

WATCH HILL, RHODE ISLAND



14 Ninigret Avenue

9 BR | 9.3 BA | \$13,950,000

sothebysrealty.com/id/SKSWCP

BILL HECKER Sales Associate
203.981.3275 bill.hecker@mottandchace.com

PORTSMOUTH, RHODE ISLAND



30 Sandy Point Farm Road

5.91 ACRES | \$5,830,000

sothebysrealty.com/id/9G54H9

KYLIE MCCOLLOUGH Sales Associate
401.864.8830 kylie.mccollough@mottandchace.com

BRISTOL, RHODE ISLAND



291 High Street

4 BR | 2.1 BA | \$1,275,000

sothebysrealty.com/id/5DSQYC

ALLISON DESSEL Sales Associate
401.339.6316 allison.dessel@mottandchace.com

BRISTOL, RHODE ISLAND

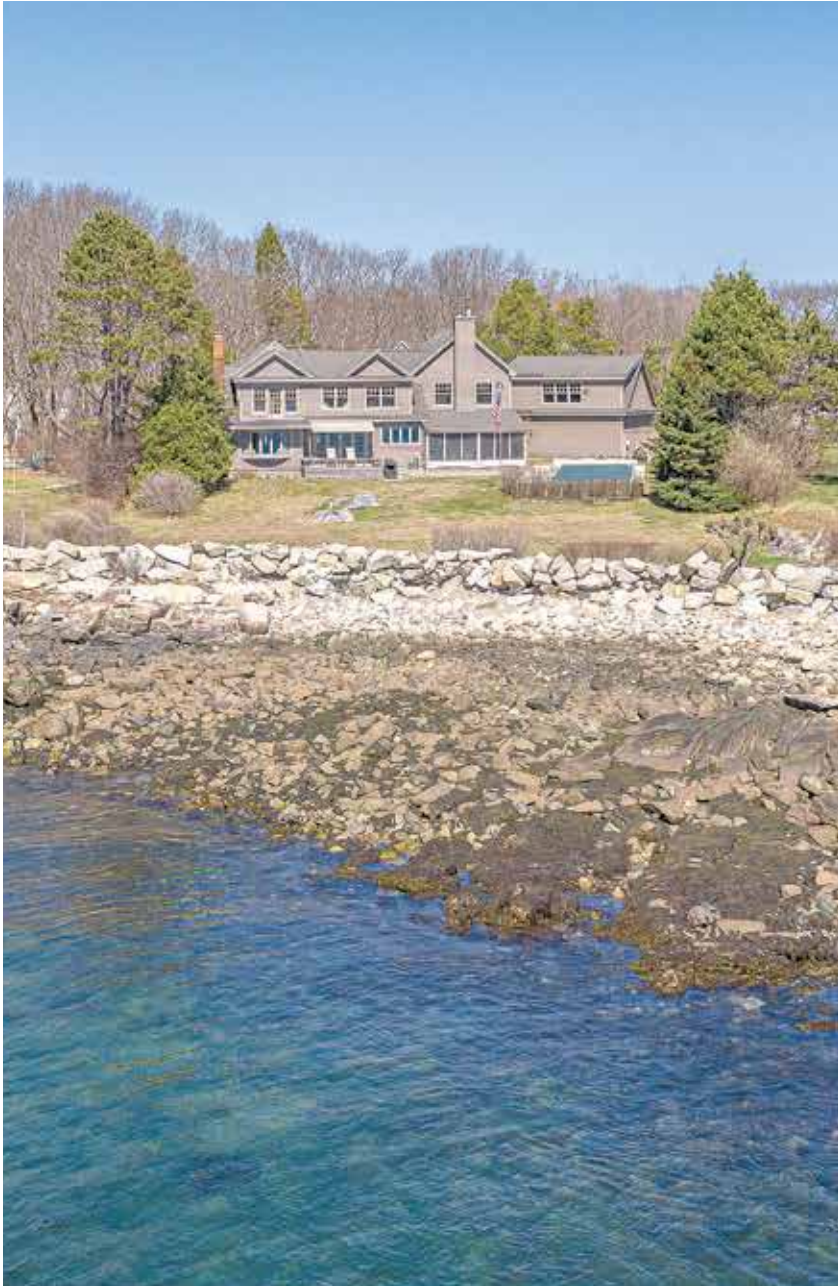


466 Poppasquash Road

4 BR | 2.2 BA | \$5,999,999

sothebysrealty.com/id/2Z786M

CHERYL ANDREOZZI Sales Associate
401.323.3934 cheryl.andreozzi@mottandchace.com



Maine Oceanfront

Imagine, if you will, the quintessential coastal retreat ready to welcome you this summer. 120 feet of pristine Atlantic oceanfront. Set high upon sparkling Curtis Cove, you will have the makings of many seasons of joyful Maine living. Launch your canoe or kayak for a quick paddle to Goose Rocks Beach. unique layout that ensures privacy for owners and guests. Perfection has an address.

4 Brackett Point Road
4 BR | 5.0 BA | \$3,500,000
sothebysrealty.com/id/R2PPDN



BILL GAYNOR
Sales Associate
207.468.3002
bgaynor@legacysir.com

LEGACY PROPERTIES SOTHEBY'S INTERNATIONAL REALTY | 150 PORT ROAD KENNEBUNK, MAINE 04043 | SOTHEBYSREALTY.COM

© 2023 Sotheby's International Realty. All Rights Reserved. Sotheby's International Realty® is a registered trademark and used with permission. Each Sotheby's International Realty office is independently owned and operated, except those operated by Sotheby's International Realty, Inc. The Sotheby's International Realty network fully supports the principles of the Fair Housing Act and the Equal Opportunity Act.



Linville Ridge

High in the Blue Ridge Mountains, with rocky outcroppings and extensive surrounding peak views, the Lazy Bear lodge sits on 5.86 acres of ridgetop. This Lodge blends Western art, mountain architecture, European and Adirondack influences to perfection. The phenomenal custom kitchen showcases custom alder cabinets, a tri-section refrigerator with custom carving and elk antler pulls.

1907 Flattop Cliffs Drive
Linville, North Carolina 28646
5 BR | 5.2 BA | \$29,750,000
sothebysrealty.com/id/LLPZN4



MARILYN WRIGHT
Global Real Estate Advisor
828.279.3980
Marilyn.Wright@PremierSIR.com

PREMIER SOTHEBY'S INTERNATIONAL REALTY | 10 BROOK STREET, SUITE 130, ASHEVILLE, NORTH CAROLINA 28803 | PREMIERSOTHEBYSREALTY.COM

© 2023 Sotheby's International Realty. All Rights Reserved. Sotheby's International Realty® is a registered trademark and used with permission. Each Sotheby's International Realty office is independently owned and operated, except those operated by Sotheby's International Realty, Inc. The Sotheby's International Realty network fully supports the principles of the Fair Housing Act and the Equal Opportunity Act.



Daniel
Ravenel

Sotheby's
INTERNATIONAL REALTY

CHARLESTON, SOUTH CAROLINA



7 Sayle Road

5 BR | 4.5 BA | \$8,500,000

7Sayle.com

MIDDLETON RUTLEDGE Realtor®

843.345.9137 mrutledge@danielravenelsir.com

CHARLESTON, SOUTH CAROLINA



102 Murray Boulevard

4 BR | 3.5 BA | \$3,495,000

102Murray.com

RUTHIE RAVENEL Realtor®

843.696.8858 ruthie@danielravenelsir.com

BLUFFTON, SOUTH CAROLINA



123 10th Avenue

3 BR | 2.5 BA | \$464,900

sothebysrealty.com/id/L62X4G

TIERRA SCHAFFER Realtor®

843.422.3610 tierra@danielravenelsir.com

SAVANNAH, GEORGIA



443 Montgomery Street

2 BR | 2.5 BA | \$1,100,000

443Montgomery.com

ANNIE ROCKWELL Broker Associate

912.844.5783 annie@danielravenelsir.com

SAVANNAH, GEORGIA



222 E Huntingdon Street

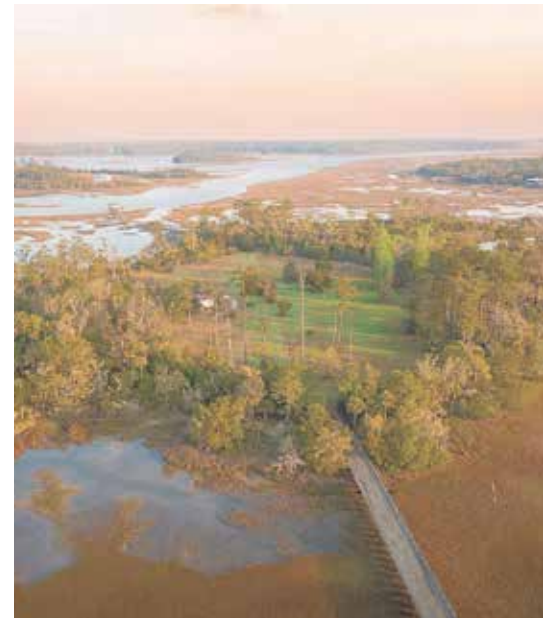
9 BR | 6.5 BA | \$3,650,000

222EHuntingdon.com

ANNIE ROCKWELL Broker Associate

912.844.5783 annie@danielravenelsir.com

BEAUFORT, SOUTH CAROLINA



40 Stedy Git N It Lane

\$1,500,000

sothebysrealty.com/id/595W8H

THE HUGULEY TEAM & AMY LANCE LEATH

843.224.7711 jack@danielravenelsir.com

DANIEL RAVENEL SOTHEBY'S INTERNATIONAL REALTY | OFFICES IN CHARLESTON-BLUFFTON-HILTON HEAD ISLAND, SC-SAVANNAH, GA | DANIELRAVENELSIR.COM

© 2023 Sotheby's International Realty. All Rights Reserved. Sotheby's International Realty® is a registered trademark and used with permission. Each Sotheby's International Realty office is independently owned and operated, except those operated by Sotheby's International Realty, Inc. The Sotheby's International Realty network fully supports the principles of the Fair Housing Act and the Equal Opportunity Act.



Daniel
Ravenel

Sotheby's
INTERNATIONAL REALTY

CHARLESTON, SOUTH CAROLINA



92 Tradd Street, South of Broad

4 BR | 5.5 BA | \$5,950,000 92Tradd.com

The Dewar Lee Pringle House, circa 1762, is an exquisite four-story Charleston Single house located on one of the most iconic streets in downtown Charleston.

CHARLESTON, SOUTH CAROLINA



161 Mary Ellen Drive, Longborough

4 BR | 3.5 BA | \$1,495,000 161MaryEllen.com

With an open floor plan and views of the Ashley River, this 4 bedroom, 3.5 bathroom, downtown Charleston home is made for an uncompromising lifestyle.



GEORGIA NETTLES

Realtor®

843.532.8437

Georgia@DanielRavenelSIR.com

DANIEL RAVENEL SOTHEBY'S INTERNATIONAL REALTY | 33 BROAD STREET CHARLESTON, SOUTH CAROLINA 29401 | DANIELRAVENELSIR.COM

© 2023 Sotheby's International Realty. All Rights Reserved. Sotheby's International Realty® is a registered trademark and used with permission. Each Sotheby's International Realty office is independently owned and operated, except those operated by Sotheby's International Realty, Inc. The Sotheby's International Realty network fully supports the principles of the Fair Housing Act and the Equal Opportunity Act.



302 Via Linda

A beautifully renovated Henry Harding Regency style home on a coveted high elevation street. The residence provides a welcoming entrance hall, leading to a high ceiling living room featuring a fireplace, a sun lit family room and four ensuite bedrooms.

4 BR | 5 BA | \$19,995,000
302vialinda.com



CRISTINA CONDON
Senior Global Real Estate Advisor
561.301.2211 | cristinacondon.com
cristina.condon@sothebys.realty



KEVIN CONDON
Senior Global Real Estate Advisor
646.457.8919
kevin.condon@sothebys.realty

PALM BEACH BROKERAGE | [SOTHEBYSREALTY.COM/PALMBEACH](https://www.sothebysrealty.com/palmbeach)



1525 N Flagler Drive

Professional Office Building on Flagler Drive facing the Intracoastal Waterway. The property includes 4 parcels including 3 upland parcels and 1 parcel of deeded land (TIIF deeds) in the Intracoastal Waterway. All 4 parcels total over one-half acre. The property is zoned for Commercial, Residential, or Mixed Use. Dock plans are currently submitted to the City of West Palm Beach

Offered at \$26,000,000
1525NorthFlagler.com



MAE FERGUSON
Senior Global Real Estate Advisor
561.329.0352 | ferguson-guari.com
mae.ferguson@sothebys.realty



NICOLE GUARI
Senior Global Real Estate Advisor
561.801.0821 | ferguson-guari.com
nicole.guari@sothebys.realty



CLICK HERE FOR
MORE DETAILS

WEST PALM BEACH BROKERAGE | [SOTHEBYSREALTY.COM/PALMBEACH](https://www.sothebysrealty.com/palmbeach)

PALM BEACH GARDENS, FLORIDA



Exquisite Contemporary

7 BR | 3.5 BA | \$17,995,000

oldpalmcontemporary.com

PALM BEACH, FLORIDA



2150 Ibis Isle Road PH 4

2 BR | 2.0 BA | \$1,800,000

ibisisleph4.com



JB EDWARDS

Global Real Estate Advisor

561.370.4141 | jbedwardssirpb.com

james.edwards@sothebys.realty

PALM BEACH BROKERAGE | SOTHEBYSREALTY.COM/PALMBEACH



249 West Indies Drive

Spectacular one story French Regency five bedroom/ five bathrooms/ two half bathroom home with hardwood floors throughout. Large welcoming foyer leads to a gracious living room and a decorative fireplace. Expansive dining room for entertaining. High end chefs kitchen with eat-in area near bay windows looking out to the beautiful outdoor pool.

5 BR | 6.0 BA | \$16,000,000
249westindies.com



MARY BOYKIN
Senior Global Real Estate Advisor
561.379.3767
mary.boykin@sothebys.realty

PALM BEACH BROKERAGE | [SOTHEBYSREALTY.COM/PALMBEACH](https://www.sothebysrealty.com/palmbeach)

LANTANA, FLORIDA



807 N Atlantic Drive

\$13,900,000

807NorthAtlantic.com

SOUTH PALM BEACH, FLORIDA



3550 S Ocean Boulevard 5B

\$4,600,000

3550SouthOcean5B.com

PALM BEACH, FLORIDA



3600 S Ocean Boulevard 604

\$3,200,000

3600SouthOcean604.com

WEST PALM BEACH, FLORIDA



121 Desota Road

\$2,349,000

121DesotaRoad.com

OCEAN RIDGE, FLORIDA



5552 N Ocean Boulevard 1A

\$1,639,000

5552NorthOcean-1A.com

PALM BEACH GARDENS, FLORIDA



5151 Beckman Terrace

\$834,000

5151Beckman.com



KOURTNEY PULITZER

Senior Global Real Estate Advisor

561.722.1745 | kourtneypulitzer.com

kourtney.pulitzer@sothebys.realty

PALM BEACH BROKERAGE | SOTHEBYSREALTY.COM/PALMBEACH

PALM BEACH, FLORIDA



Modern Residence Oversized Garage

\$14,900,000

224atlantic.com

NORTH PALM BEACH, FLORIDA



Seminole Landing with Dock

\$14,750,000

12358ridge.com

PALM BEACH, FLORIDA



Renovated North End

\$10,995,000

1435northocean.com

PALM BEACH, FLORIDA

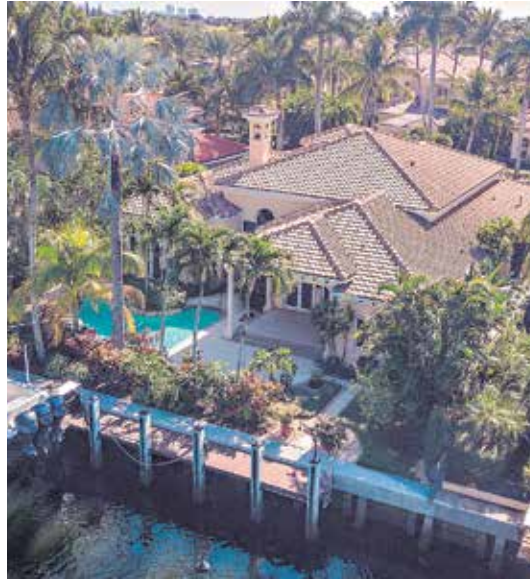


North End Five Bedroom

\$8,900,000

270colonial.com

NORTH PALM BEACH, FLORIDA



Harbour Isles Waterfront with Dock

\$4,290,000

841harbourisles.com

WEST PALM BEACH, FLORIDA



Renovated Northwood Pool Home

\$2,995,000

419-26street.com



TODD & FRANCES PETER

Senior Global Real Estate Advisors

561.281.0031 | francesandtodd.com

todd.peter@sothebys.realty

PALM BEACH BROKERAGE | SOTHEBYSREALTY.COM/PALMBEACH



Rapallo South West Palm Beach

Welcome home to the New Palm Beach! This stunning turn key 2/2 condo boasts fabulous panoramic views of the Intracoastal waterway from every room. Thoughtfully appointed floor plan with partially open kitchen, marble flooring and generous sized balcony. Short distance to world class shopping, beaches, dining and museums. Start living your South Florida life in style!

1801 S Flagler Drive, Unit 410
2 BR | 2 BA | 1,165,000
www.waterfrontcondowestpalm.com



GINA GANIM
Sales Associate
805.318.0406
gina.ganim@sothebys.realty



JEANNE-MARIE DE ANGELIS
Sales Associate
805.680.0467
jeanne.deangelis@sothebys.realty

PALM BEACH BROKERAGE | SOTHEBYSREALTY.COM/PALMBEACH



710 N County Road

IMPRESSIVE, 1 story, Palm Beach Regency, refined & updated, almost 14' ceilings in the great room & high ceilings throughout. This near north gem, on a corner lot, a block south of The Beach Club, 3 houses from beach access. The 4BR, 3.1BA home has 2 primary bedrooms with ensuite baths. For more information log on to 710NorthCounty.com

710 N County Road
4 BR | 3.5 BA | \$11,750,000
710northcounty.com



KIM L RAICH
Senior Global Real Estate Advisor
561.718.1216
kim.raich@sothebys.realty

PALM BEACH BROKERAGE | SOTHEBYSREALTY.COM/PALMBEACH



The Palace Bal Harbour

Phenomenal opportunity to own residence 6B at the prestigious Palace, one of Bal Harbour's finest full-service oceanfront buildings. This sunny southwest corner condo, boasting 3,110 sqft, has grand living and dining spaces perfect for entertaining. The Palace has resort-style amenities and the famous Bal Harbour Shops are a NY minute away.

10101 Collins Ave, #6B
Bal Harbour, FL 33154
2 BR | 4.5 BA | \$3,199,000
www.thepalaceharbour6b.com



JENNIFER BRILLIANT
Global Real Estate Advisor
305.389.0220
jbrilliant@onesothebysrealty.com
jenniferbrilliant.onesothebysrealty.com



ISTVAN ZOLCSAK
Global Real Estate Advisor
305.790.2434
izolcsak@onesothebysrealty.com
istvanzolcsak.onesothebysrealty.com



Magnificent Riverfront Estate

Magnificent riverfront estate has been skillfully renovated to the highest standards offering over 200' of river frontage and unparalleled panoramic views. Extensive list of high-end upgrades includes new impact windows, remodeled chef's kitchen and an improved floor plan offering over 7,000 sq. ft. with rare 4-car garage. Resort style grounds include new dock with lifts and saltwater pool.

1265 Little Harbour Lane
4 BR | 6 BA | \$15,900,000
sothebysrealty.com/id/H5EJEY



KAREN SMITH
Global Real Estate Advisor
772.559.1295
kmsfla@gmail.com



O'DARE BOGA DOBSON GROUP
Global Real Estate Advisors
772.713.5899
cindy@odareboga.com

NAPLES, FLORIDA



14 Sabre Lane

4 BR | 4.1 BA | \$14,950,000 sothebysrealty.com/id/G6JE7G

With natural light and 40-foot sliding glass doors overlooking a sparkling pool, this four-bedroom, four-and-a-half-bath home is a true contemporary jewel.

NAPLES, FLORIDA



885 Admiralty Parade

5 BR | 4.1 BA | \$25,500,000

sothebysrealty.com/id/HNRR6H

NAPLES, FLORIDA



2131 Marina Drive

6 BR | 6.2 BA | \$14,900,000

sothebysrealty.com/id/W3Z4DM



**KAREN VAN ARSDALE
AND NINA VAN ARSDALE**
239.860.0894
KVA@PremierSIR.com
KVANaples.com



2530 Stanmore Drive

2530 Stanmore is another Mirador Builders, by Jennifer Hamelet, masterpiece situated across from one of the precious Stanmore parks in River Oaks. This Cape Cod Contemporary influenced 5 bedroom, 6/2 bath residence of exceptional charm boasts a 3-car garage, fabulous covered patio with summer kitchen greenspace for a future pool, elevator, and Cat-6 for security, sound and media wiring.

2530 Stanmore Drive
5 BR | 7.0 BA | \$4,500,000
sothebysrealty.com/id/R7725L



PATRICIA REED
Sales Associate
713.253.9024
patricia.reed@sothebysrealty.com

MARTHA TURNER SOTHEBY'S INTERNATIONAL REALTY - CENTRAL HOUSTON BROKERAGE | 1717 WEST LOOP SOUTH STE 1700 HOUSTON, TEXAS 77027 | SOTHEBYSREALTY.COM

© 2023 Sotheby's International Realty. All Rights Reserved. Sotheby's International Realty® is a registered trademark and used with permission. Each Sotheby's International Realty office is independently owned and operated, except those operated by Sotheby's International Realty, Inc. The Sotheby's International Realty network fully supports the principles of the Fair Housing Act and the Equal Opportunity Act.

GALVESTON, TEXAS



19323 Shores Drive

4 BR | 4.5 BA | \$1,774,880 19323shoresdrivegalveston.com

Unparalleled beachfront villa-ensconced on colossal site in the Dunes of West Beach with glorious ocean and West Bay vistas. 4 expansive wrap-around covered verandas.

GALVESTON, TEXAS



745 Shiraz Passage

3 BR | 2.5 BA | \$1,274,880 745shirazpassagegalveston.com

Stellar beach side masterpiece meticulously crafted by renowned island builder in prestigious Beachtown-graced by a grand primary suite with luxurious spa bath.



JIM ROSENFELD
Broker Associate
Hall of Fame Member
713.854.1303
jim.rosenfeld@sothebys.realty

MARTHA TURNER SOTHEBY'S INTERNATIONAL REALTY | 1717 WEST LOOP SOUTH STE 1700 HOUSTON, TEXAS 77027 | SOTHEBYSREALTY.COM



Casteel Creek

Discover Vail Valley's most unique exclusive community set upon 457 acres, adjacent to 2,000,000 acres of National Forest Service land, yet just 20 minutes to Vail. Ten owners will enjoy nature at its purest and unrivaled amenities at the 28,000 SF Coyote Lodge & Sporting Club including a 65-ft climbing wall, golf simulator, pickleball, golf, pool, fitness & spa, stocked pond, and miles of trails.

+ 10 Ownership Opportunities
+ 2 Estate Lots With Residences
+ 6 Remaining Homesites (19 - 118 Acres)
CasteelCreek.com



BARBARA GARDNER SCRIVENS
Broker Associate
bscrivens@livsothebysrealty.com
(970) 471-1223



MALIA COX NOBREGA
Broker Associate
malia@vailluxurygroup.com
(970) 977-1041

LIV SOTHEBY'S INTERNATIONAL REALTY | 228 BRIDGE STREET, SUITE 100 | VAIL, COLORADO 81657 | CASTEELCREEK.COM



The Island at Lake Las Vegas

Unparalleled Lake Access. Ultra Modern Architecture. Luxury lakeside living has been redefined at Lake Las Vegas. All custom lots feature lakefront access and breathtaking views. Get away from it all and start your life on The Island at Lake Las Vegas. This once-in-a-lifetime opportunity is one you don't want to miss. There is nothing else like it on the West Coast. Call Gene today to learn more.

WATERFRONT CUSTOM HOME LOTS
Lake Las Vegas | Henderson, NV
702.497.0300



GENE NORTHUP
Global Real Estate Advisor S.0037249
702.497.0300
gene.northup@sothebysrealty.com



LAS VEGAS SOTHEBY'S INTERNATIONAL REALTY | 8548 ROZITA LEE AVE, 100, LAS VEGAS, NV 89113 | LASVEGASSIR.COM

© 2023 Sotheby's International Realty. All Rights Reserved. Sotheby's International Realty® is a registered trademark and used with permission. Each Sotheby's International Realty office is independently owned and operated, except those operated by Sotheby's International Realty, Inc. The Sotheby's International Realty network fully supports the principles of the Fair Housing Act and the Equal Opportunity Act.



Sherwood Luxury: Emily Sherwood

With 30+ years of experience, Emily Sherwood is one of the top producers in the industry. Her exceptional skills have earned her a spot among RealTrends Top 5 Realtors in Las Vegas. Emily and her team will guide you through the real estate process with professionalism and unparalleled personalization.

EMILY SHERWOOD

Global Real Estate Advisor | BS.20485.LLC
emily.sherwood@sothebysrealty.com
702.375.1402

LAS VEGAS, NEVADA



4195 Badura Avenue

5 BR | 7 BA | \$4,299,000

sothebysrealty.com/id/M7F9DM

LAS VEGAS, NEVADA



11262 San Terrazo Place

6 BR | 6 BA | \$4,200,000

sothebysrealty.com/id/XM3PMC

LAS VEGAS, NEVADA



10638 Habersham Court

4 BR | 4 BA | \$1,699,000

sothebysrealty.com/id/2488356

LAS VEGAS SOTHEBY'S INTERNATIONAL REALTY | 8548 ROZITA LEE AVE, 100 LAS VEGAS, NEVADA 89113 | LASVEGASSIR.COM



Tyson Hawley

Born and raised in the Southbay, Tyson Hawley became a desert fixture in 2015 after his time as a collegiate sports star. He merged his competitive spirit with innovative marketing to exceed client expectations and deliver record sales in an ever-changing market. In 2021 Tyson cemented his status as a top realtor with over thirty-two million in deals ranking him in the top 1.5% in the country. He has continued this success in 2022, positioning himself for a stronger year despite personal trials. Tyson, his wife and their daughter welcomed a second child to their family who was born with hearing challenges. Their church, country club, and friends have rallied around Ezra, who recently heard for the first time thanks to a cochlear implant, an experience that has impacted the entire Greater Palm Springs community following the Hawley's journey on Instagram at @tyson_hawley_realtor.

TYSON HAWLEY

Broker Associate DRE# 01995154
310.612.4584
tyson.hawley@sothebysrealty.com

DESERT SOTHEBY'S INTERNATIONAL REALTY | 74-890 HWY 111, INDIAN WELLS, CALIFORNIA 92210 | DESERTSOTHEBYSREALTY.COM

© 2023 Sotheby's International Realty. All Rights Reserved. Sotheby's International Realty® is a registered trademark and used with permission. Each Sotheby's International Realty office is independently owned and operated, except those operated by Sotheby's International Realty, Inc. The Sotheby's International Realty network fully supports the principles of the Fair Housing Act and the Equal Opportunity Act.

PALM SPRINGS, CALIFORNIA



1031 Andreas Palms Drive

4 BR | 5 BA | 4,113 SF | \$2,995,000 sothebysrealty.com/id/F7JBFH

With breathtaking mountain views of the San Jacinto Range, this residence is perfect for those seeking a luxurious, resort-like lifestyle.

PALM DESERT, CALIFORNIA



73042 Bel Air Road

4 BR | 3 BA | 2,340 SF | \$1,585,000 sothebysrealty.com/id/STG2FJ

This property has been modernized with attention paid to every detail. Enjoy clear views of the mountains.



TYSON HAWLEY

Broker Associate DRE# 01995154

310.612.4584

tyson.hawley@sothebysrealty.com



29035CliffsideDr.com

Cliffside Drive contemporary located on the highly desirable enclave of Point Dume in Malibu. With expansive ocean and City light views, this home provides 4-bedrooms and 4-baths behind a private gate and perched on a flag-lot offering extreme privacy, security and stunning views. This home also includes the coveted beach key to Riviera III and the beautiful cove of Little Dume.

29035 Cliffside Drive
4 BR | 4.0 BA | Call For Price
sothebysrealty.com/id/47P5MY



MARCUS BECK
Sales Associate
310.456.9405
marcus.beck@sothebysrealty.com

SOTHEBY'S INTERNATIONAL REALTY - MALIBU BROKERAGE | 23405 PACIFIC COAST HWY MALIBU, CALIFORNIA 90265 | SOTHEBYSREALTY.COM

© 2023 Sotheby's International Realty. All Rights Reserved. Sotheby's International Realty® is a registered trademark and used with permission. Each Sotheby's International Realty office is independently owned and operated, except those operated by Sotheby's International Realty, Inc. The Sotheby's International Realty network fully supports the principles of the Fair Housing Act and the Equal Opportunity Act.



SeaStarOne.com

Sea Star One is a once-in-a-lifetime opportunity to build a stunning custom estate on an extremely rare 22-acre site one block up from Broad Beach in beautiful Malibu. Behold the amazing panoramic views of the Pacific Ocean, California coastline and majestic Santa Monica mountains. Over seven years from design to final approval, the property is now fully entitled and ready to start construction on your dream home. Note, photos are renderings.

6361 Sea Star Drive, Malibu, CA
22 ACRES | \$15,500,000
sothebysrealty.com/id/X57VF2



GREGORY BEGA
Broker Associate
DRE 0935802
213.453.2020
gregory.bega@sothebys.realty



LINDSAY R. GALBRAITH
Broker Associate
DRE 01873410
310.916.8622
lindsay.galbraith@sothebys.realty

SOTHEBY'S INTERNATIONAL REALTY - BRENTWOOD BROKERAGE | 11911 SAN VICENTE BLVD STE 200 LOS ANGELES, CALIFORNIA 90049 | SOTHEBYSREALTY.COM

© 2023 Sotheby's International Realty. All Rights Reserved. Sotheby's International Realty® is a registered trademark and used with permission. Each Sotheby's International Realty office is independently owned and operated, except those operated by Sotheby's International Realty, Inc. The Sotheby's International Realty network fully supports the principles of the Fair Housing Act and the Equal Opportunity Act.



Modern California Ranch-Style Estate

Beautifully designed and executed California ranch-style property on 20± acres near Calistoga, Napa Valley's resort destination. Constructed with entertaining in mind and from rugged materials and earthy tones, it exudes a sense of relaxation and grace, with outdoor spaces taking full advantage of California's temperate climate. 2 structures, 4 suites, loft BR, pool, space, heritage oaks.

4 BR | 4.0 BA | \$6,700,000
sothebysrealty.com/id/WKGELV



ARTHUR DACE GOODRICH
Luxury Wine Country Specialist
415.735.8779
arthur.goodrich@sothebys.realty

SOTHEBY'S INTERNATIONAL REALTY - ST. HELENA BROKERAGE | 1229 ADAMS STREET ST. HELENA, CALIFORNIA 94574 | SOTHEBYSREALTY.COM

© 2023 Sotheby's International Realty. All Rights Reserved. Sotheby's International Realty® is a registered trademark and used with permission. Each Sotheby's International Realty office is independently owned and operated, except those operated by Sotheby's International Realty, Inc. The Sotheby's International Realty network fully supports the principles of the Fair Housing Act and the Equal Opportunity Act.



Heritage School Estate & Vineyards

Multiple structures totaling 6 BR/7 BA on 46± acres of gently sloping hillside west of Calistoga, Napa Valley's luxury resort destination. Includes 6.3± acres of Cabernet producing 18 tons and award-winning wines by Thomas Rivers Brown, a growing wine club membership, Howard Backen designed main residence, 3 guest cottages, pool, tennis & bocce courts, 2 offices.

225 Franz Valley School Road
6 BR | 7.0 BA | \$18,500,000
sothebysrealty.com/id/9RBSGH



ARTHUR DACE GOODRICH
Luxury Wine Country Specialist
415.735.8779
agoodrichrealty.com

SOTHEBY'S INTERNATIONAL REALTY - ST. HELENA BROKERAGE | 1229 ADAMS STREET ST. HELENA, CALIFORNIA 94574 | SOTHEBYSREALTY.COM

© 2023 Sotheby's International Realty. All Rights Reserved. Sotheby's International Realty® is a registered trademark and used with permission. Each Sotheby's International Realty office is independently owned and operated, except those operated by Sotheby's International Realty, Inc. The Sotheby's International Realty network fully supports the principles of the Fair Housing Act and the Equal Opportunity Act.



Yellow House, Eleuthera

Yellow House is a charming 4 bed, 4.5 bath family estate nestled within the historic town of Governors Harbour. This spectacularly custom-designed home sits on a 16,346 sq ft lot which flows into an additional landscaped 2-acre, and features an open-plan living area and a fully equipped kitchen under 3,417 sq ft of living space. The 2-acre parcel is also available for purchase.

Yellow House
Eleuthera, The Bahamas
4 BR | 4.5 BA | \$1,995,000
SIRbahamas.com/id/RM8T42



MARK HUSSEY
Estate Agent
+1 242.424.9193
Mark.Hussey@SIRbahamas.com



ANGELIKA BACCHUS
Estate Agent
+1 242.470.9019
Angelika.Bacchus@SIRbahamas.com

BAHAMAS SOTHEBY'S INTERNATIONAL REALTY | WINDSOR BUSINESS PARK, NASSAU, THE BAHAMAS | +1 242.322.2305 | SIRBAHAMAS.COM



Indigo Palm, Kamalame Cay

This 1,400 sq. ft. beachfront villa is located on the private award-winning island of Kamalame Cay. A part of the resorts villa collection, Indigo Palm, benefits from a robust rental income and is offered turnkey. Complete with golf cart, Indigo Palm boasts private ocean dual-aspect balconies and spacious en-suites. Kamalame Cay offers luxury living with access to world-class amenities.

Indigo Palm
Kamalame Cay, Andros, The Bahamas
2 BR | 2.5 BA | \$2,450,000
[SIRbahamas.com/id/367BX7](https://www.SIRbahamas.com/id/367BX7)



THE ANSELL GROUP
Estate Agents
+1 242.427.0082
Ansellgroup@SIRbahamas.com

BAHAMAS SOTHEBY'S INTERNATIONAL REALTY | WINDSOR BUSINESS PARK, NASSAU, THE BAHAMAS | +1 242.322.2305 | [SIRBAHAMAS.COM](https://www.SIRBAHAMAS.COM)

© 2023 Sotheby's International Realty. All Rights Reserved. Sotheby's International Realty® is a registered trademark and used with permission. Each Sotheby's International Realty office is independently owned and operated, except those operated by Sotheby's International Realty, Inc. The Sotheby's International Realty network fully supports the principles of the Fair Housing Act and the Equal Opportunity Act.



New Heights, Abaco

New Heights is a luxurious, contemporary residence on the pristine island of Great Guana Cay in the Abacos. This modern 8-bedroom, 10-bathroom property boasts almost 4,700 sq. ft. of interior space and an additional 800 sq. ft. of outdoor living space under roof. With unobstructed panoramic views of the Atlantic Ocean and Sea of Abaco, this turnkey property is the epitome of island living.

New Heights
Guana Cay, Abaco, The Bahamas
8 BR | 9.0 BA | \$2,950,000
SIRbahamas.com/id/SN5DN7



CHRISTOPHER ALBURY
Estate Agent
+1 242.359.6885
Christopher.Albury@SIRbahamas.com

BAHAMAS SOTHEBY'S INTERNATIONAL REALTY | HOPE TOWN, ABACO, THE BAHAMAS | +1 242.366.0163 | SIRBAHAMASCOM

© 2023 Sotheby's International Realty. All Rights Reserved. Sotheby's International Realty® is a registered trademark and used with permission. Each Sotheby's International Realty office is independently owned and operated, except those operated by Sotheby's International Realty, Inc. The Sotheby's International Realty network fully supports the principles of the Fair Housing Act and the Equal Opportunity Act.



Forest Hill, Lyford Cay

Located in the gated and prestigious community of Lyford Cay, Forest Hill is an exceptional family home situated on 2.05 acres of lushly landscaped property. The first 2-story house features 5,160 sq ft of living space with 4-bedrooms, 3.5-bathrooms a spacious living room and gourmet kitchen. The second house, comprised of 4,345 sq ft, is also 2-story and offers 3-bedrooms and 4-bathrooms.

Forest Hill
Lyford Cay, The Bahamas
7 BR | 7.0 BA | \$4,950,000
[SIRbahamas.com/id/63KPMC](https://www.SIRbahamas.com/id/63KPMC)



SAMIRA COLEBY
Estate Agent
+1 242.376.6248
Samira.Coleby@SIRbahamas.com

BAHAMAS SOTHEBY'S INTERNATIONAL REALTY | WINDSOR BUSINESS PARK, NASSAU, THE BAHAMAS | +1 242.322.2305 | [SIRBAHAMAS.COM](https://www.SIRBAHAMAS.COM)



No Matter Where You Want to be in Manhattan, I Have You Covered!

Kevin Brown has consistently ranked as one of the top 10 Manhattan agents at Sotheby's International Realty, Inc. Last year, more than 80 percent of his business came from referrals or repeat clients, both nationally and internationally; a testament to his knowledge, expertise, and integrity.

KEVIN B. BROWN

Senior Global Real Estate Advisor, Associate Broker
917.886.8850
Kevin.Brown@sothebys.realty

NEW YORK, NEW YORK



3 East 9th Street

7 BR | 9 BA | \$14,950,000

3East9thStreet.com

NEW YORK, NEW YORK



252 East 57th Street, 49A

3 BR | 3.5 BA | \$5,750,000

252East57St49A.com

NEW YORK, NEW YORK



47 East 91st Street, 2

4 BR | 5.5 BA | \$13,500,000

47East91Street2.com

SOTHEBY'S INTERNATIONAL REALTY - EAST SIDE MANHATTAN BROKERAGE | 650 MADISON AVENUE NEW YORK, NEW YORK 10022 | SOTHEBYSREALTY.COM